

SOUTH YORKSHIRE WASTE PARTNERSHIP BOARD

Venue: Virutal Meeting

Date: Monday 15 March 2021

Time: 9.00 a.m.

A G E N D A

1. Introductions and Apologies
2. Declarations of Interest
3. Minutes of the last meeting and matters arising (Pages 2 - 5)
Minutes of the meeting held on 14 December 2020.
4. South Yorkshire Municipal Waste Strategy (Pages 6 - 35)
 - SYMWS Highlight Report
 - Review of the Municipal Waste Strategy
5. Any other business
6. Date and time of the next meeting
Monday 14 June 2021 at 9.00am – venue yet to be confirmed.

South Yorkshire Waste Partnership Board

Item 3

Minutes of Meeting

Client:	South Yorkshire Waste Partnership
Project:	South Yorkshire Waste Partnership Board
Title:	South Yorkshire Waste Partnership Board Meeting
Held At:	Microsoft Teams
Date/Time:	Monday 14 December 2020 at 9:00am

Present:	Cllr Chris Lamb	Cllr Lamb	Barnsley MBC	Chair
	Paul Castle	PC	Barnsley MBC	
	Cllr Chris McGuinness	Cllr McGuinness	Doncaster MBC	
	Lee Garrett	LG	Doncaster MBC	
	Cllr Emma Hoddinott	Cllr Hoddinott	Rotherham MBC	
	Cllr Stuart Sansome	Cllr Sansome	Rotherham MBC	
	Tom Smith	TS	Rotherham MBC	
	Cllr Mark Jones	Cllr Jones	Sheffield CC	
	Cllr Mike Chaplin	Cllr Chaplin	Sheffield CC	
	Gill Charters	GC	Sheffield CC	
	Beth Baxter	BB	BDR Partnership	
	Nigel Naisbitt	NB	WIDP Transactor	
	Paul Hutchinson	PH	BDR Partnership	
	Rhonda Fleetwood	RF	BDR Partnership	Notes

Apologies:	Paul Woodcock	PW	Rotherham MBC	
	David Coulson	DC	Doncaster MBC	
	Dan Swaine	DS	Doncaster MBC	
	Matt Gladstone	MG	Barnsley MBC	

Item		Action
1.0	Introductions and Apologies	
1.1	Introductions were made of all persons present and apologies were noted as above.	
1.2	TS managed to join the meeting despite having initial technical issues connecting to Teams.	
2.0	Declarations of Interest	
2.1	There were no Declarations of Interest made at this meeting.	
3.0	South Yorkshire Waste Partnership Board Meeting Minutes 28.9.20 and Matters Arising	
3.1	Consideration was given to the minutes of the previous meeting of the South Yorkshire Waste Partnership Board held on Monday 29 June 2020.	
3.2	Agreed: That the minutes of the previous meeting of the South Yorkshire Waste Partnership Board be approved as a correct record for signature by the Chairman.	

South Yorkshire Waste Partnership Board

4.0	South Yorkshire Municipal Waste Strategy	
4.1	<p>SYWS Highlight Report - Copy attached.</p> <p>BB asked if anyone had anything to raise around the highlight report. All agreed nothing to raise.</p> <p>PH advised that all HWRC's are running well and traffic management measures have been reduced in Barnsley and Doncaster but remain in place in Rotherham. Tonnages are returning to near normal winter levels in Barnsley and Doncaster. BDR are currently in negotiations with the contractor around their Covid claims and are holding weekly meetings with them.</p> <p>BB consultations on Resource and waste Strategy are anticipated in March 2021, lot of work involved and has raised timing of these due to elections. Year end and vaccination roll out, highlighted it would be difficult to get responses in that timescale.</p> <p>NB no definitive date in March yet, but there will be 3 consultations, direction of travel is reasonably consistent with previous consultations and Environment Bill is currently going through parliament.</p> <p>Cllr EH why is RMBC so different to others with HWRC's as some sites are not busy and TM not being used, so why are others not seeing reduction and her disappointment at FCC promoting recycling on run up to Christmas, why are RMBC not seeing some improvements other councils are seeing.</p> <p>PH theory around RMBC's tonnages TM may have deterred commercial waste coming in and RMBC have reintroduced trailers and vans for residents, later than other councils and TM being on at all sites may be a reason.</p> <p>Cllr EH why still seeing TM at RMBC sites.</p> <p>PH this is not what FCC has imposed its RMBC decision.</p> <p>Cllr EH why being treated differently, as costs are a concern and lot of TM still on their sites.</p> <p>PH not aware of FCC insisting on TM, is a RMBC decision.</p> <p>Cllr CL RMBC need to look at scope of TM and requirements.</p> <p>PH we have weekly meeting with FCC/councils tomorrow, so will raise TM then. Action PH to raise TM requirement at FCC/Council meeting 15/12/2020</p> <p>LG not heard of a request by FCC for DMBC sites, DMBC decision as do not want standing traffic on highways. Asked for consistency of message, justification why RMBC is different.</p> <p>PH will raise and ask individual officers to feedback directly.</p>	<p>PH</p> <p>PH</p>

South Yorkshire Waste Partnership Board

<p>4.2</p> <p>4.3</p>	<p>Action - PH to liaise with HWRC Contract Managers BB not sure what issue is with recycling Cllr EH raised.</p> <p>Cllr EH FCC refused a media request for recycling on run up to Christmas</p> <p>BB was not aware that had been refused.</p> <p>Cllr EH confirmed she had received reasons for refusal</p> <p>Cllr CL asked if we can take why refusal up with FCC.</p> <p>Action - BB to further clarify reasons for FCC recycling media request refusal.</p> <p>R Pow MO Reply – Copy attached.</p> <p>Review of South Yorkshire Municipal Waste Strategy – Copy attached. PC outlined the proposed process to undertake a strategic review of the South Yorkshire Municipal Waste Strategy. This would include reviewing vision, emerging legislation landscape and undertaking a gap analysis. The proposed timeline would start after Christmas and early quarters of year and aim to get an agreed revised strategy Sep/October 2021. The document in the report pack has been developed with Heads of Service and BDR Joint Waste Team outlines a framework for this can Members agree this is the way forward for the review.</p> <p>Cllr CL asked if anyone had any comments.</p> <p>Cllr McG we are waiting on what the government comes back with in March 2021.</p> <p>Cllr CL will be number of asks and responsibilities placed on councils on how manage waste.</p> <p>Cllr MJ carbon perspective section B, nothing on there about circular economy and business achieving sustainable future, so can flesh this out more.</p> <p>Cllr CL Carbon should form a section in itself in the strategy.</p> <p>PC is really just a framework with key aspects and carbon would be part of this.</p> <p>BB raised that the current South Yorkshire Municipal Waste Strategy does refer to circular economy and working with SME's.</p> <p>Cllr CL so in the strategy and will be built upon as appropriate. Is a starting point to further work and discussion, is important starting point. Are all happy to proceed as described. All agreed.</p>	<p>BB</p>
<p>5.0</p>	<p>Any Other Business</p>	

South Yorkshire Waste Partnership Board

5.1	Nothing further to report.	
6.0	Date and Time of Next Meeting	
6.1	Monday 15 March 2021 at 9.00am (Chairman Briefing 8.30am) via Microsoft Teams	

South Yorkshire Municipal Waste Strategy - Project Highlight Report

Executive Summary

As with many other things progress of the Environment Bill was impacted on due to Covid 19. The Bill will now be rolled over into the next session of Parliament and is expected to be progressed in the Autumn.

The resources and waste section of the Bill sets out powers which aim to facilitate a move from the 'take, make, use, throw' system to a more circular economy. The Bill policy statement states that "Our ambition is to keep resources in use for longer and ensure that we extract maximum value we can from them".

The Resource and Waste Strategy for England (RWSE) sets out how the move towards a more circular economy will be achieved in England.¹

Much of the detail that will allow the outcomes of the RWSE to be delivered are subject to further consultation. The projected date for the consultations has moved several times and they are now expected to commence in March 2021. It is expected that the consultations will be open for a twelve week period. The BDR Manager raised concerns with representatives of Defra about the timing as it coincides with the financial year end, local elections and the Covid vaccination program however the consultations are still expected in March 2021. These consultations build on the initial consultations²³⁴ and are expected to include further details and questions on the proposed Deposit Return Scheme, Extended Producer Responsibility and Consistency in Household and Business Collections

The BDR joint waste team have begun to plan for the South Yorkshire Municipal Waste Strategy strategic review. The aim is to ensure alignment with the emerging Resource and Waste Strategy for England. Outcomes and outputs that will potentially be impacted by this are shown in this highlight report in red writing. Workstreams that are continuing until the strategic review has been completed are shown below: -

- Development of the Commercial waste services across the Partnership, particularly at the HWRC's (Strategic Priority 3 & 5)

¹ [Resources and waste strategy for England - GOV.UK \(www.gov.uk\)](https://www.gov.uk/government/policies/resources-and-waste-strategy-for-england)

² [Introducing a Deposit Return Scheme \(DRS\) for drinks containers \(bottles and cans\) - GOV.UK \(www.gov.uk\)](https://www.gov.uk/government/policies/introducing-a-deposit-return-scheme-drs-for-drinks-containers-bottles-and-cans)

³ [Waste and recycling: making recycling collections consistent in England - GOV.UK \(www.gov.uk\)](https://www.gov.uk/government/policies/waste-and-recycling-making-recycling-collections-consistent-in-england)

⁴ [Packaging waste: changing the UK producer responsibility system for packaging waste - GOV.UK \(www.gov.uk\)](https://www.gov.uk/government/policies/packaging-waste-changing-the-uk-producer-responsibility-system-for-packaging-waste)

SYMWS – Highlight Report – 02/03/2021

South Yorkshire Waste Partnership Joint Waste Board 15/03/2021

- To have an independent review of the partnership undertaken by Local Partnerships to enable the South Yorkshire Councils to move forward together (Strategic Priorities 2 and 5)
- Assessment of the impact of Brexit on the South Yorkshire Waste Management services (Strategic priority 5)
- Development of future service provision including HWRC post 2020. (Strategic Priorities 2 & 5). Management of recycling market risk (Strategic Priority 5)
- Oversight of the recycling targets across the four councils (Strategic Priority 1)

Workstreams that have been completed

- How to ensure maximum cost recovery from clinical waste service. (Strategic Priority 3)

Waste Planning policies for Barnsley MBC, Doncaster MBC and Rotherham MBC are currently contained within the Barnsley, Doncaster and Rotherham Joint Waste Plan (Adopted 2012). Waste Policies for Sheffield CC are within the Core Strategy (adopted 2009). Waste policies in both these plans are in need of a review to take account of amendments in national legislation and changes within the waste market itself.

As these plans require updating within similar timeframes, agreement has been made between the 4 authorities to investigate producing a new Joint Waste Plan, which would cover the entire South Yorkshire area.

Producing a joint Plan has a variety of benefits as waste management is already a cross-boundary matter that requires careful coordination and cooperation between local authorities across the region. Government guidance also states that local authorities should work jointly to collect and share data and information, taking account of waste arisings across neighbouring planning authority areas and the government's latest capacity forecasts in their plans. A joint Plan would also allow any capacity gaps identified to be dealt with across the area.

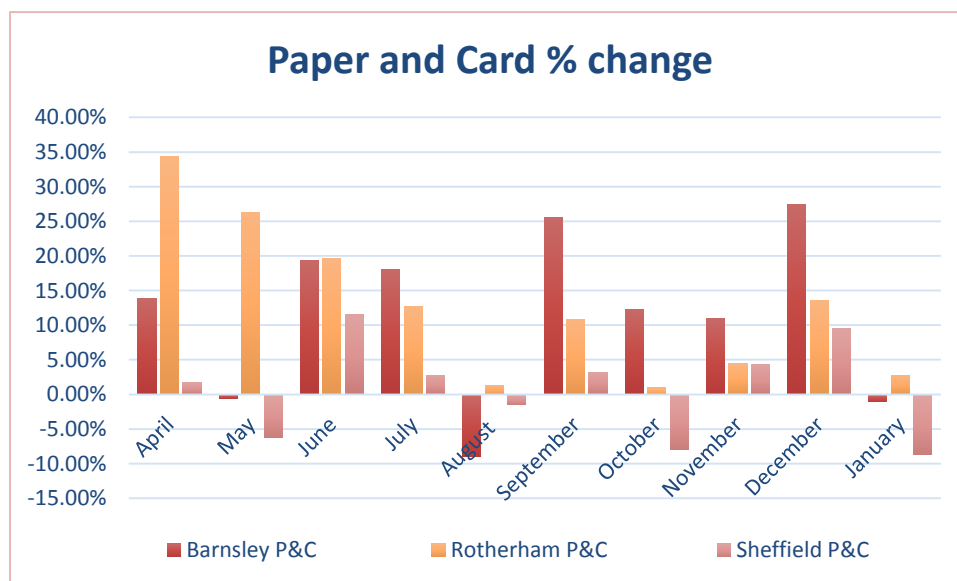
Coronavirus Pandemic impacts on waste levels

Paper and Card

There has been an overall increase in paper and card tonnage collected over the pandemic. Doncaster do not collect paper and card separately but as part of their co-mingled collection in the blue bin. Rotherham had a larger variance in the early months due to their new service not being completely rolled out in early 2019/20.

Where resources were stretched due to high levels of staff being impacted by shielding, isolation or illness the paper and card service was ceased for a short while in the region. This is evident where the variance is negative or much lower than neighbouring authorities. There are some variations due to the number of collection days in a month however it can be seen that levels of paper and card are still higher than in the previous year. It is thought this is due to the levels of home shopping that

Figure 1 Paper and Card percentage variance 2020/21 vs 2019/20

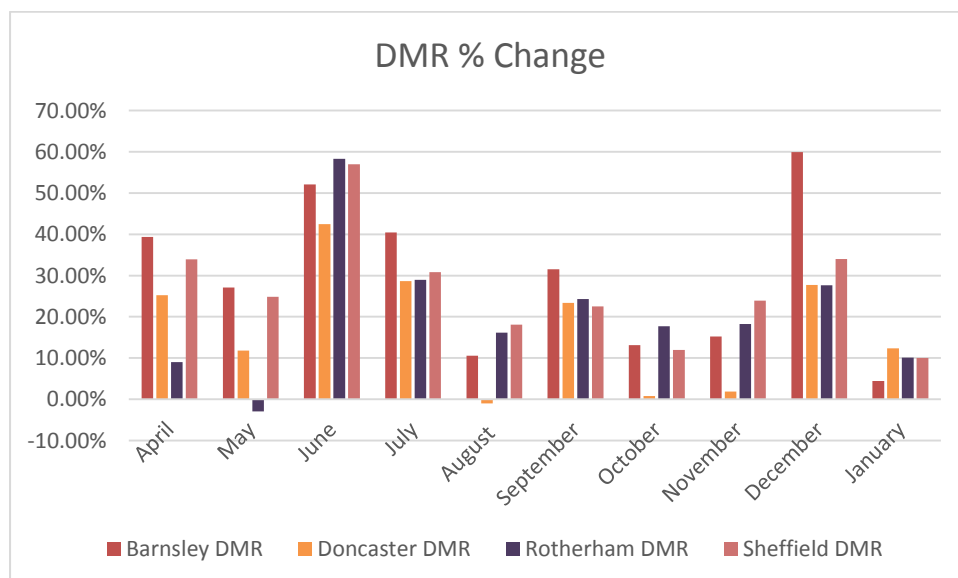


Dry Recycling

All four councils have seen an increase in dry recycling tonnages collected at the kerbside which, along with social distancing measures, put further pressure on resources. Figure 2 illustrates the percentage increase in dry recycling for the South Yorkshire Waste Partnership councils during the pandemic. It can be seen that June and July were particularly impacted this will be partly due to the number of collection days in the month and partly due to more people holidaying at home.

In August there was a dip in the overall increases in DMR arisings this may have been due to the fact there was one less collection day compared to 2019. The Government instigated an “Eat Out To help Out” scheme on Mondays to Wednesdays during August so there may have been an added impact as people ate out more.

Figure 2 Dry recycling % change 2020/21 vs 2019/20



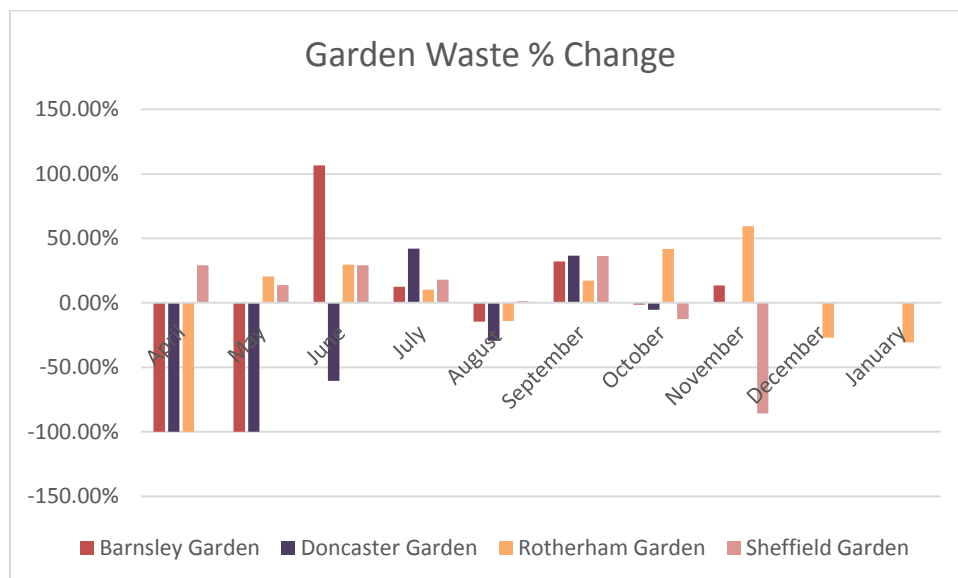
Garden Waste

Doncaster and Barnsley provide a free garden waste collection service while Rotherham and Sheffield both provide a charged garden waste collection service.

As garden waste collection is a discretionary service for which a charge can be made this was the first service all the authorities opted to be stopped during the pandemic due to resource impacts.

Garden waste is affected by the weather as well as the number of collection days. In Doncaster an independent business offered to empty garden waste bins for a charge this could potentially impact on the overall tonnage of garden waste collected.

Figure 3 –Garden waste % change 2020/21-2019/20



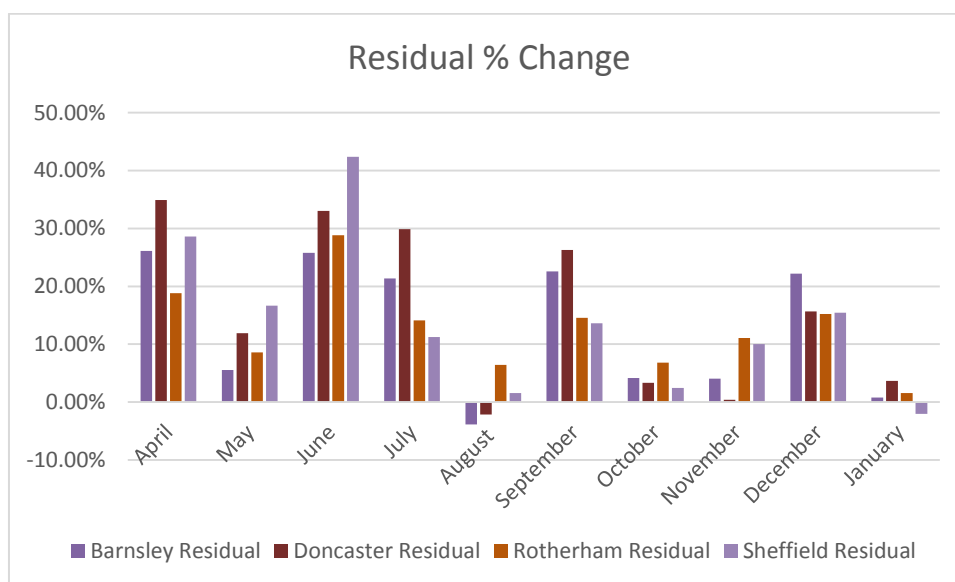
The above graph illustrates the impact on composing tonnages collected during the pandemic. Sheffield were the only council that had sufficient resources to continue to deliver the garden waste collection service. There was an increase in demand for their charged service during the lockdown period this may in part have been due to the impact social distancing had on queues at HWRCs. Rotherham reintroduced their Garden waste collection in April and Barnsley followed suit in May. Doncaster introduced a monthly collection in June but stopped the collections earlier than expected due to resource issues.

Residual Waste

All four South Yorkshire Councils have seen increases in residual waste. These levels are influenced by the number of collection days but even accounting for that it can be seen that the pandemic and people working from home has had an impact on the amount of waste generated at household level.

August residual waste levels were the closest to the previous year this could have been influenced by the “Eat Out To Help Out” scheme and the fact that lockdowns had been eased and some holidays were allowed. It should be noted that there was also one less collection day in August 2020 in comparison to August 2019. The spikes in June and September would have been due, in part, to the fact there were two more collection days in those months compared to the previous year.

Figure 4 Residual waste percentage variance 2020/21-2019/20



BDR Household Waste Recycling Centres (HWRC)

On 23rd March 2020 the Government put the country into lockdown due to the Coronavirus pandemic. UK Citizens were told to work from home where possible, only leave home for essential journeys for example for food, exercise or to collect medicines.

The South Yorkshire Councils viewed the HWRC network as an essential part of the waste management service and as such these remained open.

The weather was exceptionally good in the first days of the lockdown and as residents were limited in where they could go the HWRC network was subject to high levels of use. Social distancing measures that were put in place at this time to minimise the risk of infection for both staff and HWRC users restricted the number of vehicles on site and as a result there were queues back onto the Highway.

Police raised concerns about the queues and some sites across the region were closed by the police under the Highways Act due to the risk of accidents. Many of the facilities that reprocess material from the HWRC network were also closed due to the “Stay at Home” requirements. Consequently, in consultation with the HWRC contractor and the South Yorkshire Police, Barnsley, Doncaster and Rotherham Councils made the decision to close the sites until such time as traffic calming measures could be put in place. The situation in South Yorkshire was mirrored throughout the UK and the majority of HWRC sites nationally were closed. Sheffield instigated traffic management controls, emphasised the “Stay at Home” message worked with their contractor on measures to ensure site safety and continued to deliver the service. Sheffield also increased opening hours (by 1 hour earlier and all sites open 7 days a week) to mitigate the control measures of limited numbers on sites due to social distancing.

During April the HWRC network provision was reviewed to ensure sufficient capacity for garden and residual waste and other materials where re-processors were available. Site cleaning and Covid safety regimes were reviewed and traffic management measures were put in place to minimise impacts of queues. The number of cars that could access the sites at one time was reduced to ensure social distancing on site could be controlled effectively. Public Health colleagues were consulted on the measures that were to be implemented including the number of vehicles that were allowed on site. In late April the Government designated HWRC visits as essential and councils that had closed their sites were directed to open them where it was safe to do so with appropriate safety measures in place. Barnsley, Doncaster and Rother sites opened in the first week of May 2020.

The UK has been subjected to various levels of restrictions throughout the pandemic and this has had a knock-on effect on the HWRC network. Where restrictions have closed non-essential retail and hospitality, residents have been limited in the activities they can undertake. This has resulted in many residents participating in DIY

activities including decorating, renovating and garden improvements which generates waste that needs to be disposed of at HWRCs. The number of residents looking to dispose of waste and recycling during the pandemic coupled with the need to ensure social distancing on site (and therefore our reduced capacity and limited number of customers permitted on sites) has resulted in long queues forming despite the traffic management being in place. The South Yorkshire Councils continued to communicate that there would be delays at HWRCs due to the requirements for social distancing and provided advice on how to ensure visits to the HWRC were safe and minimised the time onsite for example by loading the vehicle with the same materials together.

During the winter months the level of activity at the HWRC traditionally drops off as the colder weather deters residents from disposing of waste in this manner. As the need for traffic management decreased with the “Stay at Home” message still in place the South Yorkshire Councils reviewed the levels and removed traffic management where appropriate to ensure costs were managed effectively. Where high levels of use were anticipated, for example at the weekends, traffic management was retained. Rotherham introduced seven day opening of sites in November.

In some areas when traffic management measures were removed queues formed and residents became abusive to each other and staff onsite. In other areas even with the traffic management in place long queues formed and residents were frustrated and many complaints were generated. This issue is reflected nationally with councils seeing queues of 40 or more cars and waits of over an hour long.

South Yorkshire councils investigated booking systems however these come with their own issues. If not all residents are aware of the booking system they will still turn up and have to be turned away. There needs to be sufficient time allocated for a resident to offload a vehicle with a booking system and this limits the number of residents that can access the service. In some areas that instigated booking systems residents have had up to a two week wait to dispose of their waste. Areas that have implemented an odd and even day system where cars can only access the sites on certain days depending on their number plates are still seeing queuing of up to an hour. Government guidance has informed Councils that “limited number of pre-booked slots” should not be used, as this is an “unnecessarily tight restriction”.

There are many other ways for residents to dispose of waste in South Yorkshire, all four councils offer a bulky waste service for a small charge. Garden waste can be composted at home, some charities continue to provide a free textile collection service, many items can be sold on internet sites or local freecycle sites. There are also legitimate local waste disposal companies that will provide skips for a charge and is a more appropriate mechanism of disposal for residents undertaking larger scale DIY and garden projects..

Current Government guidance emphasises the need to maintain social distancing of 2 metres on HWRC sites and makes the following suggestions for communicating alternatives to residents:-

“Before you travel to a HWRC you should think about the following:

- storing items at home.*
- making use of retailer take-back services or making your old items available for immediate re-use via on-line platforms. Make sure you follow social distancing and related guidance and that it is safe for you to move the items in question.*
- checking the Reuse Network website to see if there are options available for small businesses or charities in your area to mend or repurpose your furniture and appliances. This may also be a good opportunity to repair, repurpose or re-use items such as old furniture or clothes yourself which you would usually throw away.*
- alternatively, you could use a private registered waste collection company, although there will be a cost if you do this. Remember, you have a duty to make sure you know where your waste is going and to ensure that the person collecting your waste is registered. You can do this by checking the Environment Agency’s website.”⁵*

As lockdown restrictions ease it is anticipated the requirement for social distancing at sites can be reviewed. Until this time it is important to continue to communicate to residents that the sites are busy, staff and other residents should be treated with respect, abuse will not be tolerated, social distancing is in place and there may be alternative ways to dispose of their waste.

As part of the strategic review of the waste strategy consideration is to be given to the HWRC network including site access and layout.

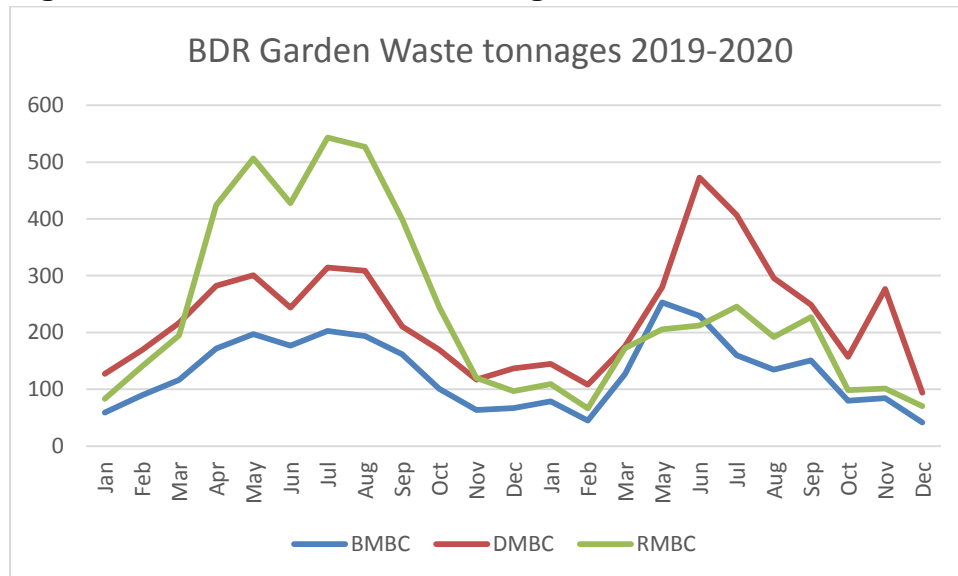
HWRC performance

The performance of the HWRC sites during 2020 was impacted by the measures that had to be introduced to ensure the safety of public visiting the site and the contractors staff. Performance across the various materials is discussed below.

Garden Waste

As mentioned previously Rotherham have a chargeable garden waste service. Residents that choose not to use this service can still access the HWRC network to dispose of their garden waste free of charge. The graph below shows the levels of waste deposited at the BDR sites.

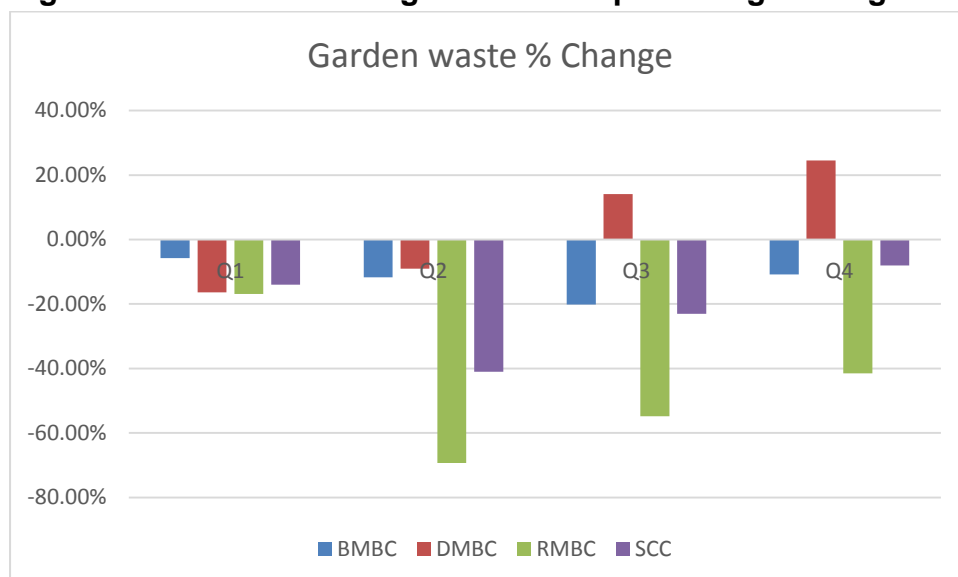
⁵ [Managing Household Waste and Recycling Centres \(HWRCs\) in England during the coronavirus \(COVID-19\) pandemic - GOV.UK \(www.gov.uk\)](https://www.gov.uk/government/news/managing-household-waste-and-recycling-centres-hwrcs-in-england-during-the-coronavirus-covid-19-pandemic)

Figure 5 BDR Garden waste tonnage 2019- 20

As expected the highest tonnage of garden waste is in the summer months. Rotherham have a higher tonnage of garden waste taken to the HWRC Network as in 2019 they introduced a charged kerbside collection service for garden waste

Doncaster is the largest council by both area and number of residents and provides a free garden waste collection service.

Figure 6 illustrates the impacts of Covid 19 on the garden waste deposited at the HWRCs showing the percentage change in garden waste tonnages between 2019 and 2020.

Figure 6 South Yorkshire garden waste percentage change 2020 vs 2019

SYMWS – Highlight Report – 02/03/2021

South Yorkshire Waste Partnership Joint Waste Board 15/03/2021

Quarter 1 - January to March. For the majority of this period in 2020 the HWRC network was operating as normal. The weather during February 2020 was very wet in comparison to February 2019. Tonnages of green waste are linked to weather so the dip in quarter one is more likely to be attributed to weather than lockdown restrictions.

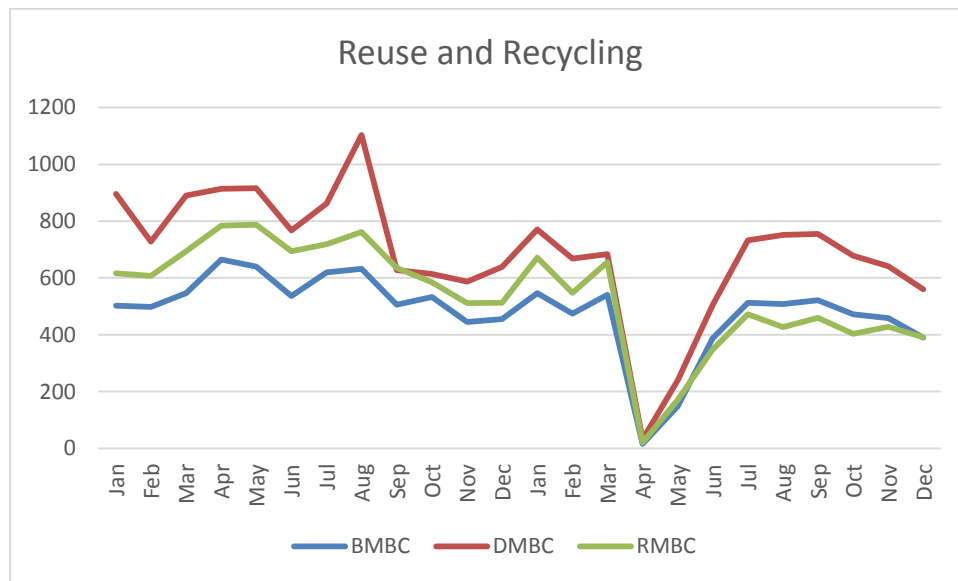
Quarter 2 – April to June – The HWRC network in Barnsley, Doncaster and Rotherham was closed from the end of March to the first week in May.

Quarter 3 July to September – Doncaster did not have traffic management at all of their sites due to their location and site specific issues. Social distancing measures were still in place and throughput was still limited. Doncaster garden waste tonnages can be seen to be more in line with previous years however this may be due to the garden waste service being monthly during the summer instead of fortnightly due to staff shortages in Doncaster so more residents would have used HWRC for this waste stream. The green bin service returned to fortnightly collections on the 1st September 2020. Lockdown measures were eased slightly during this period and non-essential retail and hospitality venues were open. Queues were still prevalent at sites and complaints were received.

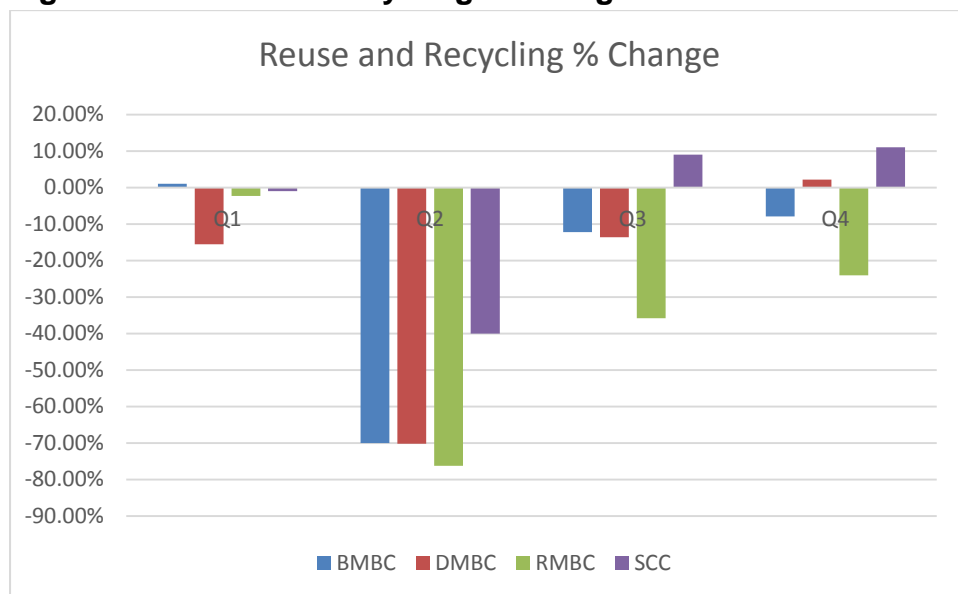
Quarter 4 October to December – The garden waste collection service in Doncaster was ceased on 2nd November 2020 due to Covid19 impacting on available resources this is likely to account for the increased level of garden waste for Doncaster. Traffic management measures were still in place in Rotherham but had been removed in Barnsley apart from at weekends.

Recycling and Reuse

The HWRC network provides residents with the ability to recycle many materials that are not routinely collected at the kerbside such as wood, electrical goods and other recyclable materials as well as a place to dispose of garden waste and excess residual. The graph below shows the tonnes of materials deposited for reuse and recycling in Barnsley, Doncaster and Rotherham on a monthly basis from January 2019 to December 2020. Doncaster is the council with the most sites and the highest number of residents hence they have more tonnage in general. The site closures period can be clearly seen.

Figure 7 – BDR reuse and recycling tonnage 2020/21-2019/20

Doncaster and Barnsley reuse and recycling tonnages returned to similar levels as before the closure reasonably quickly although the levels were still slightly down on the previous year. Rotherham sites saw a greater impact which may have been as a result of traffic management measures restricting access for residents from other areas or traders.

Figure 8 - Reuse and recycling % change

Quarter 1 - January to March. For the majority of this period in 2020 the HWRC network was operating as normal

Quarter 2 – April to June this is the period that social distancing measures were implemented and the BDR sites were closed. During this time the message was to

dispose of essential waste only as initially there was a clear “Stay at Home” message. Sheffield sites remained open but restrictions were in place

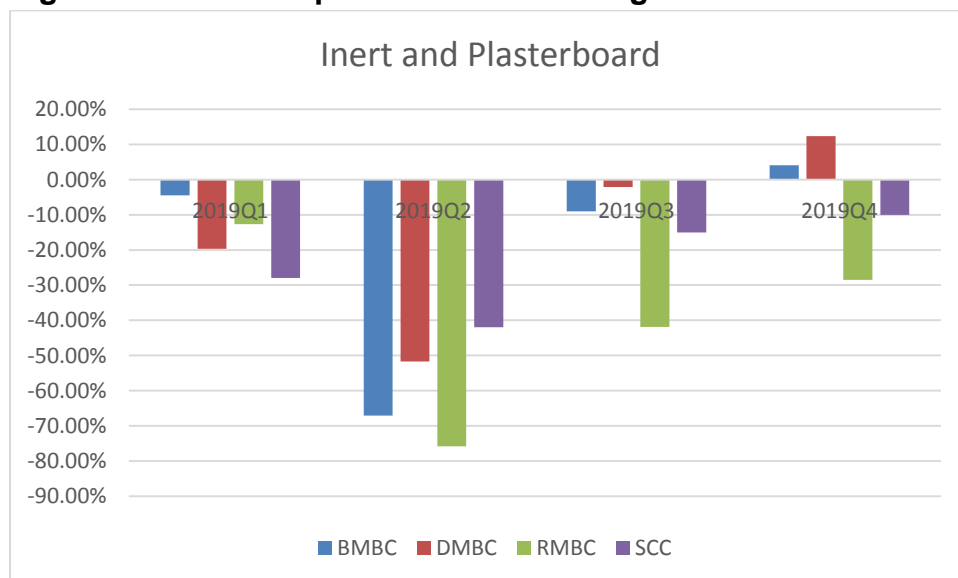
Quarter 3 - July to September levels began to return to normal with Sheffield seeing an increase on the previous year. Rotherham continued to see a greater reduction in throughput than the other councils.

Quarter 4 - October to December Sheffield and Doncaster would now appear to be returning to performance that would have been expected pre-Covid as far as reuse and recycling are concerned.

Inert and Plasterboard

Inert materials and plasterboard that are deposited at the HWRCs are subject to restrictions as they can arise from activities that are not generated by households. An example would be where a householder has had a tradesman do work for them in their house. The tradesman undertaking the work should remove any waste that has arisen and dispose of it appropriately however sometimes the tradesman requests the householder dispose of the waste themselves. Figure 8 shows the impact the restrictions have had on inert and plasterboard in the region.

Figure 9 – Inert and plasterboard % change 2020/21-2019/20



Quarter 1 - January to March. For the majority of this period in 2020 the HWRC network was operating as normal it can be seen that there was a reduction in the amount of inert and plasterboard at sites.

Quarter 2 – April to June During this period Barnsley, Doncaster and Rotherham sites were closed. Waste levels were greatly reduced across the region.

Quarter 3 July to September lockdown restrictions were eased, levels began to return to normal. Sheffield and Rotherham continued to see a reduction in these waste streams.

Quarter 4 October to December Doncaster and Barnsley saw waste levels return to those that were forecast pre-pandemic

All Materials

The overall impact on the tonnage processed at the HWRCs can be seen in figure 10 below.

Figure 10 – All materials % change

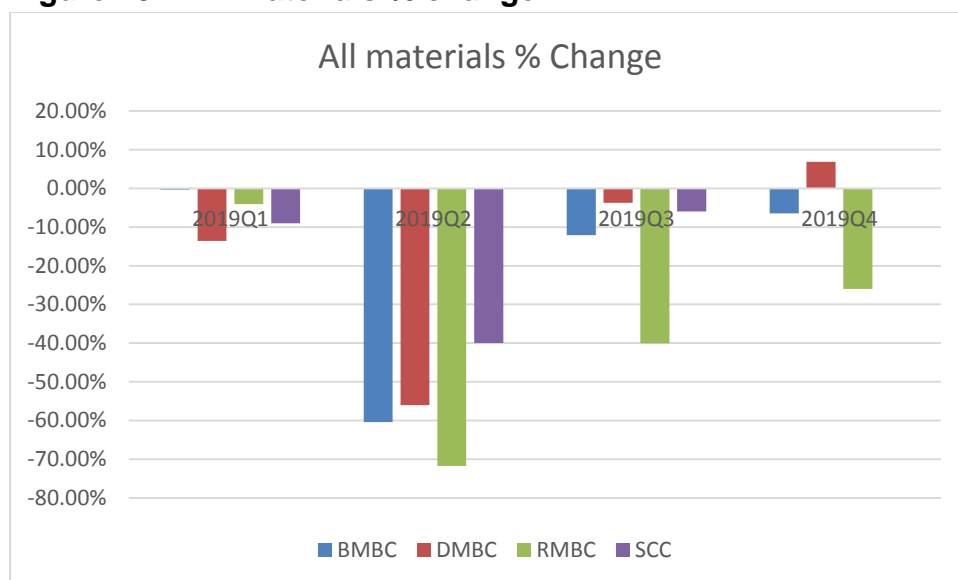


Table 1 All materials% change

All Materials	2019Q1	2019Q2	2019Q3	2019Q4
BMBC	0	-60%	-12%	-6%
DMBC	-13	-55%	-3%	7%
RMBC	-4.	-72%	-40%	-26%
SCC	-9%	-40%	-6%	0%

Quarter 1 - January to March. For the majority of this period in 2020 the HWRC network was operating as normal it can be seen that there was a slight reduction in the overall amount of material being received at sites. As lockdown happened on the 23rd March this would have been a contributing factor.

Quarter 2 – April to June During this period Barnsley, Doncaster and Rotherham sites were closed and Sheffield remained open, waste levels were greatly reduced across the region.

Quarter 3 July to September lockdown restrictions were eased, levels began to return to normal. Rotherham continued to see a greater reduction in waste streams than other councils in the area. This may have been due to the level of traffic management preventing residents from other areas accessing the sites or deterring trade abuse of the facilities.

Quarter 4 October to December Overall Rotherham HWRC network has seen the greatest impact in terms of throughput. The other South Yorkshire HWRC have

returned to near “normal” levels of use however there are still issues with long queues at busy times.

Key Period: September 2020 – December 2020

The activities are RAG rated as indicated in the table below

Green	On track
Amber	In progress
Red	Behind schedule
Blue	Discovery Stage
Grey	Stop until further details on Resource and Waste Strategy are available

- **Strategic Priority 1 – The vision is to encourage and inspire children and adults across South Yorkshire to make less waste by reducing, reusing and recycling more. Interim Priority Lead Lisbeth Baxter.**

1.1 Work-stream Status

Table 1

Work-stream	Owner	End Date	Previous meeting rating	Current meeting rating
Increase recycling by 10kg per household by 2021	Steering Group	March 2021	Green	Green
Reduce household waste by 2kg per household each year – year on year until 2021	Steering Group	December 2021	Green	Green
Deliver a targeted reduce, re-use recycle campaign to at least 100,000 households across South Yorkshire each year.	Community Education and Liaison Officer (CELO)	December 2021	Green	Green
Make available waste education resources for all Key Stage 2 and Key Stage 3 children in South Yorkshire by October 2018	Community Education and Liaison Officer (CELO) – Commercial Waste Departments in each council	October 2018	Amber	Green
All of our actions, practices, policies and communications will be reviewed and written to uphold the principles of the waste hierarchy by December 2019	To be assigned by Gill Gillies	December 2019	Blue	Halted for review

The policy workstream has been halted until after the strategic review of the strategy. It should also be noted that the emerging Resource and Waste Strategy is likely to move away from weight based to potentially carbon-based targets and place more emphasis on resource efficiency.

1.2 Performance trends

Performance from waste dataflow

Table 2 – annual performance

Item	2017-18	2018-19	2019-20	2020-21
Dry recycling kilograms per household ⁶	223	221	221	
Garden waste kilograms per household ¹	137	132	133	
Residual waste kilograms per household ¹	522	503	500	
Landfilled kilograms per household ¹	29	25	19	
Total Waste per household	911	881	873	
Number of schools with a Council recycling service	TBC	TBC	TBC	

The information in the table above will be updated on an annual basis at year-end post June following the submission and verification of waste data flow information.

1.3 Joint / Individual Working Arrangements

Table 3

	Barnsley	Doncaster	Rotherham	Sheffield
Residual	BDR PFI MBT/AD Renewi Ends 2040 (can be extended to 2045)			Sheffield's ERF Veolia PPP Ends 2038
HWRC	FCC joint contract with BDR Ends October 2021 (potential to extend to 2023)			Subcontracted to Veolia UK until 2021
Garden Waste	Freeland Horticulture Ends extended until 2021	Freeland Horticulture Ends 2023 (potential to extend to 2025)	Biowise Limited T/A Wastewise Awarded 2020 ends 2023 with the potential to extend by 2 x 12 months	Veolia PPP Ends 2036 Disposal subcontracted to SJB, currently being market tested
Paper and Card	Kerbside - Palm Recycling Extended to 2021	Dealt with through SUEZ Contract. Ends 2026	Veolia ES, Beighton to recycle Paper and Cardboard. Ends 2024 (potential to extend to 2026)	Veolia PPP Ends 2036
Mixed Dry Recycling	GRUK Recycling Ends	Dealt with through SUEZ	HW Martin ES, to Recycle	Veolia PPP Ends 2036

⁶ Information extracted from waste dataflow www.wastedataflow.org

	2021	Contract. Ends 2026	Glass Bottles, Steel and aluminium tins and cans + plastic Bottles, Pots Tubs and trays and Textiles. Ends 2024 (potential to extend to 2026)	
Commercial Waste	BDR PFI MBT/AD Renewi Ends 2040	BDR PFI MBT/AD Renewi Ends 2040	In-house collection. Disposal BDR PFI MBT/AD Renewi Ends 2040	Veolia PPP Ends 2036

1.4 Key Activities completed during this period

1.4.1 Increase recycling by 10kg per household by 2021

Figure 9

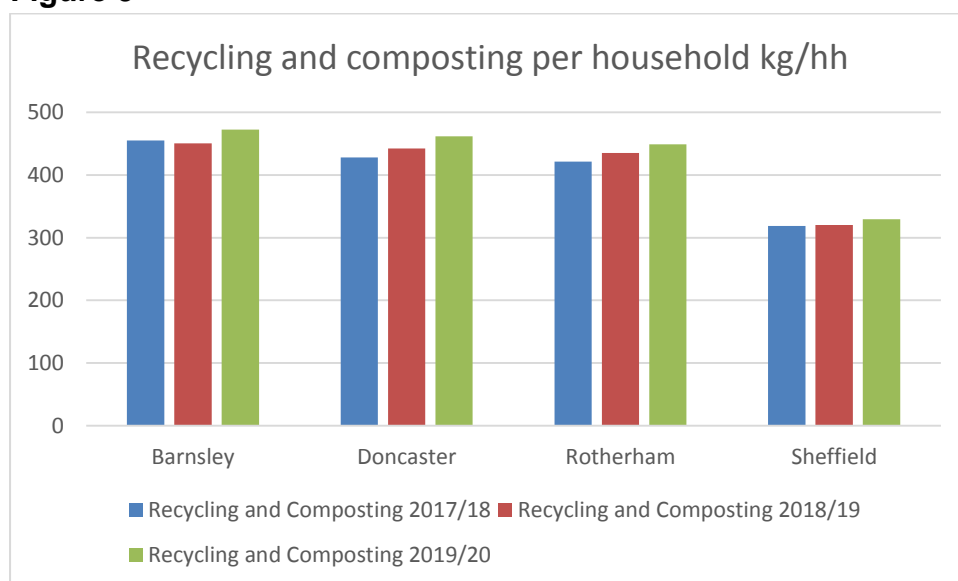


Figure 9 shows the relative quantities of recycling collected table 4 below shows the progress towards the target in kilograms.

Table 4

Recycling and composting per household	Barnsley	Doncaster	Rotherham	Sheffield*
Kg Change 2019/20 vs 2017/18	17.34	33.49	27.50	10.67

* Validated information not available at the time of writing the report so may be subject to change.

It can be seen from the information above that there has been an overall increase in recycling and composting in excess of 10kg per household therefore this target has been achieved up to 2019/20. The pandemic has increased dry recycling arisings but there was disruption to the garden waste services in South Yorkshire so at this stage it is difficult to ascertain the overall impact this will have had on achieving this target in 2020/21.

Barnsley

Dry mixed recycling (DMR) saw an increase of 18.5% between November 2020 and January 2021, these increased tonnages had no real effect on the levels of contamination which remain stable at just above 3%. Mixed paper and card recycling increased by 11.2% contamination rose to 7.92% up 1.56 %on the previous year.

COVID continues to have a significant impact on the volumes of waste being generated at the kerbside, this trend is expected to continue in line with the Government roadmap.

Doncaster

Doncaster collect paper, cans, plastic bottles, liquid food cartons and card in a blue bin with glass continuing to be collected in the green box. Additional materials (textiles, shoes and Waste Electrical & Electronic Equipment (WEEE)) have temporarily been suspended due to the pandemic.

Due to the pandemic, there has been an increase in kerbside tonnages for residual & recycling, this is continuing and throughout December & January the increase for residual waste & recycling was approx 20% and 34% respectively (based on previous Christmas tonnages).

Green waste collections are anticipated to start on Tuesday 2nd March as planned.

The treatment contract for the bulky/oversize waste that further reduces waste to landfill is still going well and DMBC waste and recycling services currently send less than 3% of waste to landfill.

Rotherham

The paper and card bin swap that was introduced in November 2018 has seen a year on year increase. The new Dry Material Recycling (DMR) service implemented in early 2019 gave an increase of 49.37% DMR in 2019/20 compared to the previous year. Contamination levels continue to improve and are now running at an average of 18.5% but with a reducing percentage trend.

The garden waste service has over 40,000 subscriptions. The amount of waste collected in 2019/20 decreased by 33.57% (5,307.08 tonnes) compared to the

previous year. Garden waste recycling at HWRC's, increased by 35.76% (1,300.21 tonnes) in 2019/20 compared to 2018/19.

Sheffield

The Pandemic has continued to have a significant impact on recycling figures particularly mixed dry recycling collections (glass, cans and plastic bottles). That waste stream is up by 26% in the year so far (compared to last year) however paper and card remains at a similar level to previous years, showing a marginal 1% increase.

1.4.2 Reduce household residual waste by 2kg per household each year – year on year until 2021

Figure 10

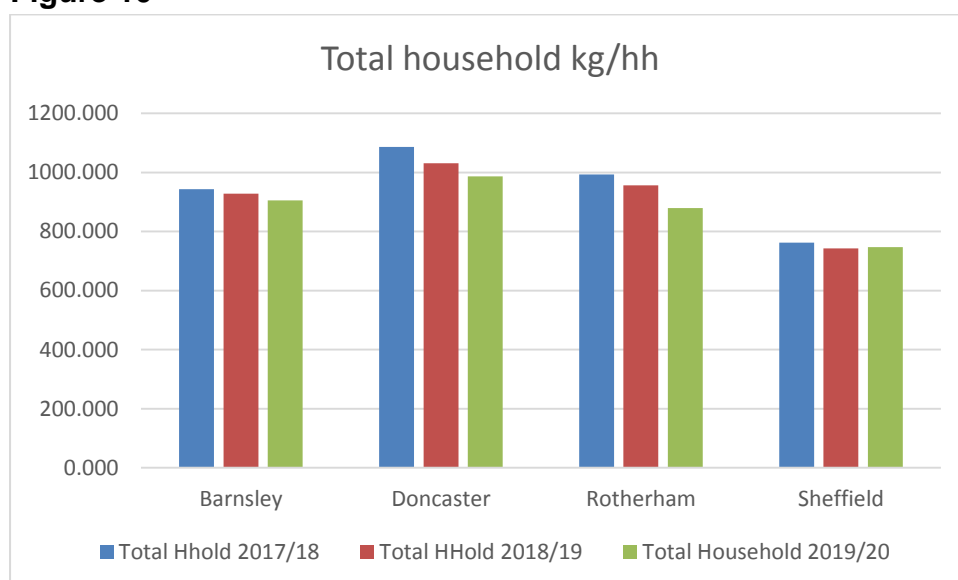


Figure 19 shows the relative proportions of residual waste collected by the four councils table 4 below shows the progress toward the target.

Table 4

Household residual waste	Barnsley	Doncaster	Rotherham	Sheffield
Kg Change 2019/20 vs 2017/18	-37.771	-99.854	-113.981	-15.091

Doncaster and Rotherham both instigated service changes and have exceeded this target. It should be noted that RMBC introduced less capacity for residual waste and a chargeable garden waste collection service this is likely to have been the reason for higher reduction in kilos of residual waste per household. At this stage it is difficult to determine the exact effect the pandemic will have had on residual waste.

Barnsley

Residual waste tonnages continue to fluctuate and are quite unpredictable, as of January we have seen an increase of 12% on last year. Although we anticipate tonnages reducing once full restrictions are lifted it is doubtful that they will reduce to pre COVID levels, primarily as an element of home working is expected to continue for most industries.

Doncaster

The blue bin roll out for co-mingled dry recycling has now bedded in and the focus has moved to increasing participation and improving quality. The 'love food hate waste' campaign has proved successful in Doncaster. Residual waste collected is still higher than usual since the start of lockdown measures was introduced on 23rd March 2020. This target may be unachievable this year

Rotherham

The Paper and Card bin swap that was introduced in November 2018 has seen a year on year increase. The new Dry Material Recycling (DMR) service implemented in early 2019 gave an increase of 49.37% DMR in 2019/20 compared to the previous year. Contamination levels continue to improve and are now running at an average of 18.5% but with a reducing percentage trend.

The garden waste service has over 40,000 subscriptions. The amount of waste collected in 2019/20 decreasing by 33.57% (5,307.08 tonnes) compared to the previous year. Garden waste recycling at HWRC's, increased by 35.76% (1,300.21 tonnes) in 2019/20 compared to 2018/19.

Sheffield

It is likely that the impact of Covid and the number of people still working from home will result in household waste volumes being up by the end of the 20/21 year compared to the year previous. Current figures show we have collected 9% more through our black bins in the year to date than last year. The ongoing restrictions are unlikely to see this reduce significantly throughout the remainder of the year.

1.4.3 Deliver a targeted reduce, re-use recycle campaign to at least 100,000 households across South Yorkshire each year.

1.4.3. Household Waste and Recycling Communications Campaign

Barnsley, Doncaster and Rotherham Councils are working with Hubbub a social enterprise owned by Hubbub Foundation to develop a communications campaign. The Foundation's purpose is to inspire ways of living that are good for the environment.

1.4.4 Provide resources for Key Stage 3 children in South Yorkshire by October 2018

Renewi and the BDR contract management team have now taken the decision to suspend bookings of the Rubbish Adventure workshop and site tours for the remainder of the financial year. This is due to ongoing concerns about how we can make these Covid-19 safe and prevent the risk of spreading the disease. In place of the school workshop the CELO and the communications team have been working on a series of school resources tailored to specific Key Stages (age groups) that focus on the 3Rs, climate change, the facility and, in the case of secondary aged pupils, the circular economy and UN sustainability goals

The team are also working to create recordings of the Love Food Hate Waste and Treatment Facility talks, write a Love Your Clothes talk and potentially record a site tour video for community groups to view online or download and watch.

At the request of the Councils the team have continued to share composting messages through their social media in addition to topics such as the safe disposal of PPE, batteries, plastic swaps and food waste.

Over the last few months the team has been creating content for an overhauled BDR online website. This will dramatically change the existing site, updating the focus from the construction and early functioning of the facility. The new version will be more user-friendly, better laid out and will provide residents with a much clearer picture of what they can do to help slow climate change, reduce waste, improve the environment and be involved in local campaigns. There will also be a revised section for teachers to download resources to use in school and this will eventually house all recorded sessions too. RMBC are currently building the new site and expect to have it finished before the end of the month.

1.4.4.1 Waste reduction website

A monthly press release has been distributed for the #ChooseDayisReuseDay reuse campaign relating to the following topics: reusable shopping bags, food storage, coffee pods and tea infusers, water bottles, straws and cutlery, clothing, reusing while shopping, coffee cups, re-use in the festive period and reusable nappies. Since the start of the #ChooseDayisReuseDay, campaign the amount of our audience that visits our page on a Tuesday has risen significantly.

In January, a positive article appeared in the Rotherham advertiser about the #ChooseDayisReuseDay campaign, whereby all the past press releases were grouped together to give a handy list of reusable swaps.

A press release for the January #ChooseDayisReuseDay campaign was distributed and was about using reusable nappies. This press release included insights from parents who have used them and also the expertise of the South Yorkshire Nappy library.

1.4.5 All of our actions, practices, policies, and communications will be reviewed and written to uphold the principles of the waste hierarchy by December 2019.

This has been put on hold until further detail on the Resource and Waste Strategy is available.

1.5 Key Activities planned for next period (up to – June 2021)

Barnsley

Work has begun on measuring the carbon output of the borough's waste, this is still in its early stages of development and once completed it is hoped that it will become a useful tool which can be factored into future decisions.

We continue to focus on improving the quality of paper and card recycling with handouts to crew members, updates to the website and targeted comms campaigns. Additionally, we are investigating the opportunity to add pots, tubs and trays to our domestic plastic collections; this will increase the variety of plastics residents can recycle kerbside from only plastic bottles.

Fleet continue to work on our vehicle replacement strategy, we are currently in the process of replacing smaller fleet vehicles with an intention to replace RCV's as the technology develops decisions are still to be made on which technology will be used. There is an ongoing piece of work into ensuring the infrastructure (e.g. charging points in key locations) is in-place which will ensure a successful roll-out of this strategy.

Commercial waste continues to focus on increasing its customer base and assess it's operational delivery model in an attempt to improve the efficiency of the current model.

Doncaster

Doncaster are continuing to work with their contractors to ensure the robust delivery of their services during the current pandemic along with this they are investigating:

- Commercial options for the HWRC's have been put on hold
- Work is being undertaken with Refurnish/SUEZ to establish how successful the re-use bulky collections are
- The bulky waste collection structure has been altered; the number of items that can be collected per order are up to 4, up to 8, up to 12, up to 24 and up to 32 items. Early indications show that the up to 4 items is a popular choice and in the first 2 weeks attributed to 60% of the overall orders.
- Plans to promote the Commercial Waste & Recycling Service and enable the authority to be more competitive with the pricing structure

Rotherham

As well as ensuring a robust service provision during the current pandemic RMBCs focus areas this year are:

- Planning a recycling service for commercial operations including schools
- Increasing the quality of recycling collected at the kerbside and participation in the service. RMBC waste officers are working with housing colleagues to investigate the best solution for reducing contamination of communal bins at flatted properties
- Introducing a bin reminder service for the residents, this is being looked at with IT to ensure a good fit with the current systems.
- Round efficiencies by procuring route optimisation software, this is being looked at within the procurement of a new in cab and office system

Sheffield

Targeted communications campaigns are planned to take place over the next few months to help target areas where recycling performance seems lower than expected. This will include a citywide collection calendar with some targeted information by area.

The review of the HWRC provision in Sheffield is being undertaken and a working group will explore options around creating a supersite within the city and will meet in the coming months to progress to a decision.

2. Strategic Priority 2 – Our vision is to work hard to deliver and maintain a dependable and reliable service Priority Lead Gillian Charters, Head of Waste, Sheffield City Council

2.1 Work-stream Status

Work-stream	Owner	End Date	Previous meeting rating	Current meeting rating
Implement, publish and promote South Yorkshire Waste Customer Charter	Gill Gilles	December 2018	Red	Halted for review
Have a plan for how South Yorkshire can deliver a standardised service including materials, containers and collection frequency.	Gillian Charters	December 2019	Blue	Halted for review
Produce and make available a commercial waste guide for businesses across South Yorkshire by March 2019	To be assigned by Steering Group (currently with CELO)	March 2019	Red	Halted for review
Look at the possibility of a shared waste asset and resource plan by April 2019 to maintain a reliable and user-friendly service for residents	Gill Charters	April 2019	Blue	Halted for review

2.2 Key Activities Completed This Period

This work stream has been halted as the emerging Resource and Waste Strategy for England is likely to impact on household and commercial waste collections and may influence the infrastructure required to deliver the outcomes.

2.3 Key Activities planned for next period (up to – June 2021)

Local Partnerships have completed various scenarios for a standardised service across the region taking into account the recent release of “Our waste, our resource: a strategy for England” and the South Yorkshire Councils aspirations.

Carbon modelling work has been completed and the information has been cascaded to Steering Committee. Once comments have been provided to Local Partnerships the work will be completed and Local Partnerships will present their findings to the South Yorkshire Councils.

3. Strategic Priority 3 – Our vision is that all four councils will work together more closely to deliver value for money services Priority Lead, Paul Castle, Service Director, Environment & Transport, Barnsley Council

3.1 Work-stream Status

Work-stream	Owner	End Date	Previous meeting rating	Current meeting rating
Develop and annually review a knowledge bank capturing local and national best practice by December 2018	Beth Baxter	December 2018 (subject to annual review)	Amber	Amber
Deliver and implement a joint commercial plan which will save the Councils £2 million	Paul Castle	December 2021	Amber	Halted for review
Develop a joint calendar of events annually to ensure coverage of emerging best practice and developments in the sector with the least cost	Paul Castle	March 2021	Amber	Halted for review
Support an additional 300 Small Medium Enterprises SMEs across South Yorkshire to access appropriate and cost-effective waste services by December 2021,	To be assigned by Paul Castle	December 2021	Blue	Halted for review

3.2 Key Activities Completed This Period

Information on clinical waste, Brexit and the Environment Bill uploaded on to the portal.

3.3 Key Activities planned for next period (up to – June 2021)

The South Yorkshire Partnership Board pre-meeting of Portfolio Holders has been extended to allow the Portfolio Holders more time to discuss key strategic priorities and how to progress them. A plan for the strategic review of the South Yorkshire Waste Strategy was be considered at the last board and meetings are to be diarised with Members to progress this work.

3.4 Key Decisions/Support required:

The RWSE consultations are still understood to progress in March 2021. The overall direction of the SYMWS and its links to the RWSE are to be reviewed as part of the recovery plan for waste services in the region. This is particularly important now the Circular Economy Package has been transposed.

4. Strategic Priority 4 – Our vision is to continue exploring how waste technology can be used to improve recycling and waste services. Priority Lead, Tom Smith Assistant Director, Regeneration and Environment, Rotherham Council

4.1 Work stream Status

Work-stream	Owner	End Date	Previous meeting rating	Current meeting rating
Real time collection information to be available to customers online	Tom Smith	December 2021	Blue	Blue
On-going installation of GPS tracking, state of the art camera systems in-cab technology in 100% of all new and replacement collection vehicles	Tom Smith	December 2021	Green	Green
Invest in resources to drive improved use of new and existing technology for both staff and customers e.g. more online support	Tom Smith	December 2021	Blue	Blue

4.2 Key Activities Completed This Period

The global pandemic has resulted in more people working from home including waste management officers. Work to improve the digital offering to customers from waste management is ongoing.

Waste management teams across the region have been holding Microsoft teams meetings to progress projects where possible.

4.3 Key Activities planned for next period (up to – June 2021)

Further investigation into how digitalisation can improve waste services.

4.4 Key Decisions/Support required:

No decisions required at this moment in time

5. Strategic Priority 5 – Our vision is to be proactive to influence decision making on waste at a European, national, and local level and to drive investment in infrastructure within South Yorkshire.

Beth Baxter BDR Manager

5.1 Work stream Status

Work-stream	Owner	End Date	Previous meeting rating	Current meeting rating
Lobby central government on emerging waste policies and legislation	Beth Baxter	December 2021	Amber	Green
Seek to secure £5 million of external funding and investment for South Yorkshire by 2021 for use in infrastructure projects e.g. Household Waste Recycling Centres	Beth Baxter	December 2021	Grey	Halted for review
Provide resources for continuing professional development for industry recognised bodies	Beth Baxter	December 2021	Amber	Amber

5.1.1 Lobby central government on emerging waste policies and legislation

5.1.1.1 Environment Bill

At the State Opening of Parliament on 19 December 2019 the Queen said environmental measures on several fronts – including a ban on plastic exports – were to be enshrined into law as part of a proposed environment bill. Since then the bill has been subjected to several debates and is now at report stage. Progress of the Bill is now not expected until autumn 2021 by which time the results of the Resource and Waste Strategy consultation will be known.

The Bill has been broadly welcomed by the Local Government Association (LGA)⁷ although there are some aspects that raise concerns including:

- Separate collections of recyclable materials as this could cause contractual and financial difficulties
- The Bill's proposals to ban the export of plastic waste to non-OECD countries. The LGA note that the recycling infrastructure in the UK is not sufficiently developed to process the quantities of this material, this will need to be addressed.
- The need for the Extended producer responsibility measures to set out the "full net costs to councils" this should include impacts from litter and fly-tipping

⁷ <https://www.local.gov.uk/sites/default/files/documents/LGA%20briefing%20-%20Environment%20Bill%20-%20R%20HC%20-%20050220.pdf>

The Resources and Waste Strategy for England, published in December 2018, gives pointers to the longer-term policy direction for waste. This is subject to further consultation likely to take place in March 2021 and currently requires a mandatory weekly separate collection of food waste and outlines core materials that should be collected for recycling. This could have major impacts on the PFI Contractors for BDR and Sheffield and their sub-contractors Renewi, Veolia and other contractors well as potential impacts on the services the councils provide.

The Chair of the Joint Waste Board has written to the Under Secretary of State and the Chief Secretary to the Treasury raising concerns on the lack of clarity in the Strategy on funding and timescales local authorities face in relation to implementing changes to their services. A response has been received noting the good work of the South Yorkshire Councils and pointing to the further consultations

5.1.1.2 Brexit

The UK transition period ended on the 31st December 2020 and the Environment Bill had not as yet been passed. This meant that the Office for Environmental Protection could not be set up. From 1 January 2021 an expert team based in Defra, called the Interim Environmental Governance Secretariat (IEGS) will help uphold environmental governance standards until the Office for Environmental Protection (OEP) begins its work. IEGS will support continuity of environmental legal safeguards; provide for ongoing monitoring and technical work; and help the OEP as it prepares to take on its statutory duties.

5.1.1.3 Climate and Biodiversity Emergency

The South Yorkshire Councils have all declared climate emergencies and are working together with other organisations in the region to establish carbon reduction targets.

The waste minimisation and resource efficiency activities in the SYMWS will contribute to achieving these targets.

5.1.1.4 Consultations

A consultation took place on the UK Plan for Shipments of Waste. This implements the UK government policy of self-sufficiency in waste disposal, by prohibiting imports and exports of waste to and from the UK for disposal. This policy is subject to some limited exceptions which are outlined in the UK Plan. The BDR Councils did not respond to this consultation due to time limitations.

The Environmental Audit Committee at Parliament has launched an enquiry into how DRS schemes can work, with focus on plastics recycling. The BDR Core Team have been working on models to input into the National Association of Waste Disposal Officers Response.

SYMWS – Highlight Report – 02/03/2021

South Yorkshire Waste Partnership Joint Waste Board 15/03/2021

Second consultations on matters relating to waste have been delayed due to the pandemic and the key consultations on DRS, EPR and Consistency are not now expected until March 2021.

5.2 Key Activities Completed This Period

Review and collating of information required for consultation responses.

5.3 Key Activities planned for next period (up to – June 2021)

Funding streams for projects to be identified. Decision to be made on the approach to the response to the consultations in March. Will individual responses be provided or will a co-ordinated response be required.

5.4 Key Decisions/Support required

The key identified project risks are as follows:

- Approval processes delay responses to consultations
- Insufficient budgets are allocated to allow the work to be undertaken
- There are changes in national government and policy
- There are changes in local government
- Decisions are delayed
- Partners withdraw
- External funding is not available
- Staff resources are not allocated, or a skills gap exists; and
- Impacts of Brexit.