



Rotherham Local Safeguarding Children Board

Child Sexual Exploitation Delivery Plan 2015-18

VERSION CONTROL

Version	Date	Author	Comments
1.0	21.07.2015	CSE Sub Group	DRAFT Delivery Plan approved at CSE Sub Group 13.08.15
2.0	26.08.2015	PM	Updates from some key leads on timescales, required actions and evidence
2.1	27.08.2015	PM	Updates from JI. Additional action to 2.8. Action update to 2.1, 3.3. Changes to key leads on 2.7, 2.8, 3.3, 5.1, 5.2, 5.3, 5.4
3.0	02.09.2015	GR / PM	BRAG Rating updates
3.1	03.09.2015	GR / PM	Updates from Implementation Group
3.2	07.09.2015	PM / GR	Updates from Action Leads
3.3	09.09.2015	PM	Updates from Action Leads
3.4	11.09.2015	SA	Added glossary of terms
3.5	02.12..2015	GR / PM	Draft updates from Action Leads
3.6	12.01.16	GR / PM	Updates following Sub Group

PROGRESS OF ACTIONS – BRAG RATING

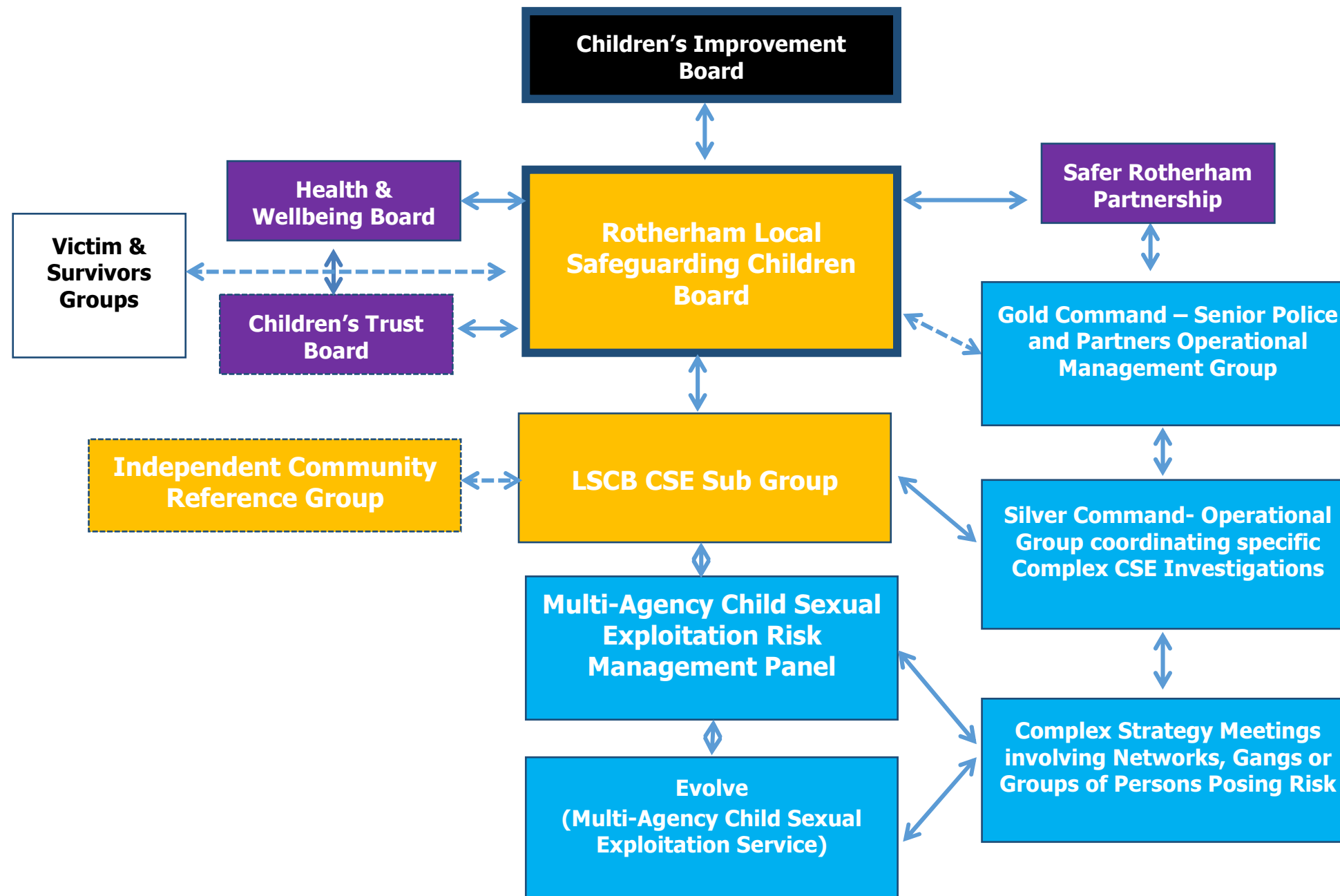
- BLUE** = The task has been completed.
- GREEN** = The task is on target.
- AMBER** = The delivery date may not be met and some remedial action is required.
- RED** = The task is significantly off target requiring additional resources or intervention as a priority

LEAD OFFICERS

Name	Job title	Agency
Karen Borthwick	Director of Education and Skills	RMBC
Warren Carratt	Head of Service Organisational Development	RMBC
Nicole Chavaudra	Director Commissioning, Performance & Quality Assurance	RMBC
Linda Harper	Interim Director Commissioning and Performance	RMBC
Jason Harwin	Chief Superintendent, District Commander - Rotherham	South Yorkshire Police
Tracey Holmes	Head of Corporate Communications and Marketing	RMBC
Jean Imray	Interim Deputy Strategic Director of Children's Services	RMBC
Ingrid Lee	Assistant Chief Constable Protective Services	South Yorkshire Police
Sarah Mainwaring	Assistant Chief Officer for NE Division	National Probation Service
Lynn McIntosh	Interim CSE Lead	RMBC
David McWilliams	Assistant Director Early Help and Family Engagement	RMBC
Elaine Redding	Interim Head of Safeguarding and Quality Assurance	RMBC
Gail Hancock	Interim Director – Safeguarding Children and Families	RMBC
Nicole Chavaudra	eSafety (Director Commissioning, Performance & Quality Assurance)	RMBC
Gary Ridgeway	Assistant Director (CSE Investigations)	RMBC
Teresa Roche	Director of Public Health	RMBC
Jo Smith	Post Abuse Coordinator	RMBC
Maryke Turvey	Assistant Chief Officer	South Yorkshire Community Rehabilitation Company
Deborah Fellowes	Scrutiny Manager, Scrutiny and Member Development	RMBC

Introduction

Refreshed introduction required CSE Sub Group Chair /LSCB Chair to agree wording



1. PREVENT

Prevent children and young people from becoming sexually exploited through effective leadership, governance and a wider culture embedded within organisations that recognise the root causes of CSE, the signs and risk indicators and do all they can to tackle them.

No.	STRATEGIC OBJECTIVE	ACTIONS	LEAD OFFICER	WHEN	EVIDENCE OF PROGRESS	BRAG RATING
1.1.	Establish a clear view of the CSE profile in the borough to ensure that the Health & Wellbeing Board undertake informed commissioning of service provision.	Produce an assessment of need for CSE to be updated annually and linked to the JSNA	Terri Roche	Sep 2015	Needs assessment completed and linked to JSNA – July 2015 next due 2016	ACTION CLOSED
		Use the assessment to generate a clear commissioning plan linked to the other relevant commissioning plans e.g. CAMHS Strategy. Implementation of the outcome and recommendation of the commissioning review.	Linda Harper	March 2016	A joint commissioning strategy with the Rotherham CCG has now been agreed by the respective senior management forums for both organisations. The strategy highlights the commissioning of CSE post support services as a joint priority. Work is underway to commission the longer term CSE post support services in partnership with a range of organisations, children and young people. He award of the new contracts scheduled for 1 April 2016	
		Develop and update annual Problem Profile based on data and intelligence from partner agencies	Jason Harwin	June 2016	Problem Profile produced and subject to annual review.	ACTION CLOSED
1.2.	The public understand the signs and symptoms of CSE and raise concerns early, alerting statutory services where necessary. Awareness campaigns include a clear message that CSE is a crime and will not be tolerated.	Engage with a PR/Marketing company to ensure messaging is well constructed and targeted.	Tracy Holmes	Dec 2015	Discussed with head of comms at CSE Sub Group 02.12.15 Agreed this is no longer necessary as there are sufficient resources within the partnership to deliver the comms strategy. ACTION CLOSED.	
		Develop a campaign aimed at the public including leaflets, posters, local radio, social media.	Tracy Holmes	March 2016	Discussed at CSE Sub Group 02.12.15 Decision is to reinvigorate Rotherham Standing Together campaign and associated comms plan.	
		Develop a specific outreach campaign with the minority ethnic communities working with religious and community leaders and local voluntary sector providers who represent the communities	Tracy Holmes	March 2016	As above.	
		Work with a small number of schools (including at least one primary and one special school) to develop and pilot an awareness raising campaign aimed at children and young people. This will be cognisant of children with additional and complex needs.	Karen Borthwick	March 2016	This has been subject to discussion between healthy schools coordinator and chair of CSE Sub Group. A comprehensive report was presented to and discussed at the CSE Sub Group 02.12.15.	ACTION CLOSED
1.3.	Intelligence, including 'soft' intelligence, about historic and current incidence and risk of CSE is timely, shared between agencies	Ensure that specific concerns regarding CSE linked to locations, licensed premises, taxi licensing etc are shared and acted upon appropriately.	Jason Harwin	Feb 2016	Options paper underway by LSCB Business Unit	

No.	STRATEGIC OBJECTIVE	ACTIONS	LEAD OFFICER	WHEN	EVIDENCE OF PROGRESS	BRAG RATING
	and treated with respect.					
		Make available a CSE 'crimestoppers' reporting line linked to the South Yorkshire Police data analysts.	Jason Harwin	March 2016	This was discussed at CSE Sub Group 02.12.15 and decision is that a specific reporting line akin to Crime stoppers and Child Line not required Action Closed.	
		Roll out awareness of the function and purpose of the Multi Agency Review Panel (MARP) to ensure intelligence is shared and resources are deployed to disrupt as appropriate	Gary Ridgeway	Feb 2016	To be included in LSCB Options Paper - above	
		Develop a multi-agency process for agencies to share information and intelligence in a timely and effective manner.	Gary Ridgeway	Dec 2015	Some good progress made through the weekly information sharing meeting and further development is being progressed.	
1.4.	All children and young people in Rotherham understand what healthy, respectful relationships are and can recognise that the damage and the dangers caused by sexual bullying and exploitation (including on line) to both victim and perpetrator.	A refreshed early help strategy and delivery plan includes measurable actions for delivering this objective.	David McWilliams	Feb 2016	Throughout Nov /Dec 2015 coproduction events have taken place with partners. Final draft for consultation Jan 2016.	
		Parents and carers involved with early help services will be worked with regarding the identification of Child Sexual Exploitation and associated risks	David McWilliams	Feb 2016	CSE Champions now identified within early help who will progress this engagement.	
		e-Safety practice across the partnership to be reviewed and a strategy to deliver ongoing improvement and review will be developed focused on online grooming, exploitation and sexual bullying.		Feb 2016	There is no longer an e-safety officer post. A discussion is required at the LSCB to agree how this action will be progressed.	
		Raise awareness with staff in schools of the resources available to them to deliver CSE prevention work based on Healthy Relationships.	Karen Borthwick	Feb 2016	Comprehensive update presented to CSE Sub Group 02.12.15	
		Schools, PRUs and colleges will provided with advice and guidance on pornography and have clear procedures for intervention for sexting and for anyone who has shared pictures without getting consent.	Karen Borthwick	March 2016	Existing national guidance has already been sent to settings and the e-safety officer is working with the Healthy Schools consultant to ensure school leads have appropriate curriculum resources to deliver lessons as part of their SRE programme.	
1.5.	Potential perpetrators (children and adults) are identified early in a range of settings, including schools, youth clubs, young offender institutions and prisons.	Proposed work stream in joint commissioning plan for CSE with Clinical Commissioning Group.	Linda Harper	March 2016	A CSE transformation Board with key stakeholders has been established. This is currently exploring the evidence need for the commissioning of support services in relation to potential perpetrators. A piece of work is underway to track the operational process from the point of entry to the	

No.	STRATEGIC OBJECTIVE	ACTIONS	LEAD OFFICER	WHEN	EVIDENCE OF PROGRESS	BRAG RATING
					service via MASH to determine how robust our current processes are in the identification of potential perpetrators. This will further inform the commissioning intentions.	
		The Safer Rotherham Partnership will have a standing agenda item to ensure regular mapping of the issue of group and gang associated sexual violence and exploitation and mapping the services that are put in place in response.	Jason Harwin	March 2016	SRP review and operational CSE arrangements map locations where intelligence suggest CSE is/could be taking place and plans to address the issues are captured. This includes which resources are required.	ACTION CLOSED
		Gang-associated sexual violence and exploitation will be explicitly identified as a risk in all gang-affected areas. All relevant strategies and operational systems are gender-proofed in a way that integrates learning and reads across the fields of child sexual exploitation, sexual violence, domestic violence and gangs	Jason Harwin	Nov 2015	Police intelligence lead has briefed chair of CSE Sub Group on current group and gang activity (operationally sensitive). This is reflected in the problem profile.	
1.6.	Organisational leadership and governance creates a culture in Rotherham where the causes, signs and symptoms of CSE are understood and identified and responded to quickly, effectively and with a determination to do the right thing in response.	All agencies and commissioned services will put in place a learning and development framework linked to the RLSCB multi agency offer for CSE for their workforce and report on compliance with this in section 11 audits.	Multi-Agency CSE Sub Group	March 2016	Some activity completed. This needs close monitoring through audit and scrutiny processes.	
		Multi-agency policies and operational systems for CSE will be updated to ensure that there are appropriate inter-agency systems in place regarding common thresholds of intervention for CSE.	Multi-Agency CSE Sub Group	Oct 2015	Policies and operational systems updated and will be monitored through audit.	ACTION CLOSED
		A tiered multiagency learning and development offer will be put in place for frontline practitioners working within the safeguarding system.	Warren Carratt	Oct 2015	Learning and Development Framework developed for the local authority and for use by other organisations. Level 1&2 training is for single agency training and Levels 3 – 6 are delivered on a multi-agency basis and are within the LSCB prospectus.	ACTION CLOSED
		All agencies will have an effective whistle blowing arrangements for volunteers and professionals with compliance to be included as part of the s11 audit	Rotherham LSCB	Feb 2016	Whistleblowing policies in place to be checked through S11 process.	
1.7.	All partners recognise the diversity of all communities in Rotherham and ensure services are responsive to need	The LSCB community reference group will produce regular updates to the CSE Sub Group on the impact of community engagement.	Rotherham LSCB	Oct 2015	Community Reference Group is in place and is a standard agenda item quarterly at the CSE Sub Group	ACTION COMPLETE
		Improving Lives Select Commission will undertake a annual review of community engagement activity.	Improving Lives Select Commission	July 2016	Report will make recommendations for any improvements identified and managed as per the scrutiny review process.	

No.	STRATEGIC OBJECTIVE	ACTIONS	LEAD OFFICER	WHEN	EVIDENCE OF PROGRESS	BRAG RATING
		A commissioning review will inform a standardised approach across the market which will inform consistent equality impact assessments	Linda Harper	March 2016	Draft commissioning review is complete and requires ratification by relevant boards.	

GLOSSARY OF TERMS

RMBC	Rotherham Metropolitan Borough Council
CSE	Child Sexual Exploitation
RLSCB	Rotherham Local Safeguarding Children Board
LSCB	Local Safeguarding Children Board
JSNA	Joint Strategic Needs Assessment
CAMHS	Child and Adolescent Mental Health Services
CCG	Clinical Commissioning Group
MARP	Multi Agency Review Panel
PRU	Pupil Referral Unit
MASH	Multi Agency Safeguarding Hub
Evolve	Multi-Agency CSE Service
DLT	Directorate Leadership Team
LAC	Looked After Child
LA	Local Authority
MOU	Memorandum of Understanding
WT 2015	Working Together 2015 Statutory Guidance
SYP	South Yorkshire Police
PCC	Police and Crime Commissioner
NPS	National Probation Service
FSB	Federation of Small Businesses