

# Corporate Parenting Monthly Performance Report

## As at Month End: October 2018

***Please note:** Data reports are not dynamic. Although care is taken to ensure data is as accurate as possible every month, delays in data input can result in changes in figures when reports are re-run retrospectively. To combat this at least two individual months data is rerun for each indicator.*

### **Document Details**

**Status:** Issue 1

**Date Created:** 21/11/18

**Created by:** Performance & Quality Team

# Performance Summary

As at Month End: October 2018

\*DOT - Direction of travel represents the direction of 'performance' since the previous month with reference to the polarity of 'good' performance for that measure. Colours have been added to help distinguish better and worse performance. Key Below:-

- ↑ - improvement in performance / increase in numbers
- - no movement - numbers stable with last month
- ↓ - decline in performance, not on target / decrease in numbers

NO.	INDICATOR	GOOD PERF IS	DATA NOTE (Monthly)	2018 / 19					DOT (Month on Month)	RAG (in month)	Target and Tolerances			YR ON YR TREND				LATEST BENCHMARKING			
				Aug-18	Sep-18	Oct-18	YTD 2018/19	DATA NOTE			Red	Amber	Target Green	2014/15	2015/16	2016/17	2017/18	STAT NEIGH AVE	BEST STAT NEIGH	NAT AVE	NAT TOP QTILE THRESHOL
LOOKED AFTER CHILDREN	6.1	Number of Looked After Children	Info	Count	655	651	658	-	As at mth end	↑			n/a	407	432	488	627				
	6.2	Rate of Looked After Children per 10,000 population aged under 18 (Council Plan Indicator)	Low	Rate per 10,000	115.7	115.0	116.3	-	As at mth end	↓			99.1	70	76.6	86.6	110.8	81.3	58.0	62.0	-
	6.3	Admissions of Looked After Children	Info	Count	22	16	26	170	Financial Year	↑			n/a	175	208	262	330				
	6.4	Number of children who have ceased to be Looked After Children	High	Count	19	20	22	141	Financial Year	↑			n/a	160	192	215	194				
	6.5	Percentage of LAC who have ceased to be looked after due to permanence (Special Guardianship Order, Residence Order, Adoption)	High	Percentage	15.8%	5.0%	13.6%	23.4%	Financial Year	↑			<33% 33%> 35%+	37.5%	40.1%	27.9%	27.3%				
	6.6	Number of SGOs started (all)	High	Count	1	6	4	22	Financial Year	↓			range to be set								
	6.7	Percentage of LAC who have ceased to be looked after due to a Special Guardianship Order	High	Percentage	5.3%	5.0%	0.0%	10.5%	Financial Year	↓			range to be set	-	-	9.8%	8.2%	12.3%	22.0%	12.0%	17.0%
	6.8	LAC cases reviewed within timescales	High	Percentage	81.3%	87.8%	89.9%	86.4%	Financial Year	↑			<90% 90%> 95%+	94.9%	83.3%	91.3%	90.6%				
	6.9	% of children adopted	High	Percentage	10.5%	0.0%	9.1%	9.9%	Financial Year	↑			YTD <20% 20%> 22.7%+	26.3%	22.4%	14.4%	13.9%	18.9%	30.0%	14.0%	20.0%
	6.10	Health of Looked After Children - up to date Health Assessments	High	Percentage	92.8%	90.0%	86.6%	-	As at mth end	↓			<90% 90%> 95%+	81.4%	92.8%	89.5%	83.7%				
	6.11	Health of Looked After Children - up to date Dental Assessments	High	Percentage	76.0%	69.9%	67.2%	-	As at mth end	↓			<90% 90%> 95%+	58.8%	95.0%	57.3%	72.5%				
	6.12	Health of Looked After Children - Initial Health Assessments carried out within 20 working days	High	Percentage	31.3%	30.4%	57.9%	43.9%	Financial Year	↑			range to be set	20.0%	8.4%	18.2%	55.7%				
	6.13	% of LAC with a PEP	High	Percentage	93.4%	93.4%	92.2%	-	As at mth end	↓			<90% 90%> 95%+	76.0%	97.8%	97.0%	93.6%				
	6.14	% of LAC with up to date PEPs (Report Termly - End Jul, Dec, Mar)	High	Percentage	-	-	-	-	As at mth end	-			<90% 90%> 95%+	-	-	98.9%	(Summer 2018)				
	6.15	% of eligible LAC with an up to date plan	High	Percentage	91.3%	91.7%	87.6%	-	As at mth end	↓			<93% 93%> 95%+	98.8%	98.4%	79.1%	89.5%				
	6.16	% LAC visits up to date & completed within timescale of National Minimum standard	High	Percentage	98.2%	96.0%	95.0%	-	As at mth end	↓			<95% 95%> 98%+	95.2%	98.1%	74.0%	97.5%				
CARE LEAVERS	7.1	Number of care leavers	Info	Count	243	245	242	-	As at mth end	↓			n/a	183	197	223	256				
	7.2	% of eligible LAC & Care Leavers with a pathway plan	High	Percentage	95.4%	95.0%	95.0%	-	As at mth end	→			<93% 93%> 95%+	-	69.8%	99.3%	93.9%				
	7.3	% of eligible LAC & Care Leavers with an up to date pathway plan	High	Percentage	95.0%	94.6%	94.2%	-	As at mth end	↓				-	-	-	70.3%				
	7.4	% of care leavers in suitable accommodation	High	Percentage	95.1%	95.5%	95.5%	-	As at mth end	→			<95% 95%> 98%+	97.8%	96.5%	97.8%	96.1%	91.0%	100.0%	84.0%	91.0%
	7.5	% of care leavers in employment, education or training	High	Percentage	61.7%	61.6%	63.6%	-	As at mth end	↑			<70% 70%> 72%+	71.0%	68.0%	62.9%	64.1%	52.2%	65.0%	50.0%	57.0%
PLACEMENTS	8.1	% of long term LAC in placements which have been stable for at least 2 years	High	Percentage	65.8%	66.0%	69.2%	-	As at mth end	↑			<68% 68%> 70%+	71.9%	72.7%	66.2%	61.2%	68.2%	85.0%	70.0%	74.0%
	8.2	% of LAC who have had 3 or more placements - rolling 12 months (Council Plan Indicator)	Low	Percentage	12.1%	12.7%	12.1%	-	Rolling Year	↑			13%+ 13%< 10.8%<	12.0%	13.0%	11.9%	13.4%	10.1%	7.0%	10.0%	8.0%
	8.3	% of LAC in a family Based setting (Council Plan Indicator)	High	Percentage	82.9%	82.3%	82.7%	-	As at mth end	↑			range to be set 85%>	-	-	81.1%	81.0%				
	8.4	% of LAC placed with parents or other with parental responsibility (P1)	Low	Percentage	6.0%	5.5%	5.8%	-	As at mth end	↓			range to be set	-	-	5.3%	4.3%				
	8.5	% of LAC in a Commissioned Placement	Low	Percentage	51.9%	52.5%	52.0%	-	As at mth end	↑			range to be set	-	43.6%	43.2%	50.5%				

\*DOT' - Direction of travel represents the direction of 'performance' since the previous month with reference to the polarity of 'good' performance for that measure. Colours have been added to help distinguish better and worse performance. Key Below:-

- ↑ - improvement in performance / increase in numbers
- - no movement - numbers stable with last month
- ↓ - decline in performance, not on target / decrease in numbers

	NO.	INDICATOR	GOOD PERF IS	DATA NOTE (Monthly)	2018 / 19					DOT (Month on Month)	RAG (in month)	Target and Tolerances			YR ON YR TREND				LATEST BENCHMARKING			
					Aug-18	Sep-18	Oct-18	YTD 2018/19	DATA NOTE			Red	Amber	Target Green	2014/15	2015/16	2016/17	2017/18	STAT NEIGH AVE	BEST STAT NEIGH	NAT AVE	NAT TOP QTILE THRESHOL
FOSTERING	9.1	Number of LAC in a Fostering Placement (excludes family/friend carers)	High	Count	439	437	<b>443</b>	-	As at mth end	↑		range to be set			-	-	353	414				
	9.2	% of LAC in a Fostering Placement (excludes family/friend carers)	High	Percentage	67.0%	67.1%	<b>67.3%</b>	-	As at mth end	↑		range to be set			-	-	72.3%	66.0%				
	9.3	Number of Foster Carers (Households)	High	Count	152	152	<b>149</b>	-	As at mth end	↓		range to be set			-	156	161	154				
	9.4	Number of Foster Carers Recruited	High	Count	1	0	<b>1</b>	7	Financial Year	↑		range to be set			-	13	32	16				
	9.5	Number of Foster Carers Deregistered	Info	Count	2	0	<b>4</b>	16	Financial Year	↑		range to be set			-	16	22	25				
ADOPTIONS	10.1	Number of adoptions	High	Count	2	0	<b>2</b>	14	Financial Year	↑				n/a	-	43	31	27				
	10.2	Number of adoptions completed within 12 months of SHOBPA	High	Count	0	0	<b>0</b>	5	Financial Year	→				n/a	-	23	12	16				
	10.3	% of adoptions completed within 12 months of SHOBPA	High	Percentage	0.0%	-	<b>0.0%</b>	35.7%	Financial Year	→	-	<83%	83%>	85%+	37.0%	53.5%	38.7%	59.3%				
	10.4	Average number of days between a child becoming Looked After and having a adoption placement (A1)	Low	YTD Average	353.9	353.9	<b>351.4</b>	-	Financial Year	↑		511+	511<	487<	393.0	296.0	404.0	325.3	511.6	337.0	558.0	501.1
	10.5	Average number of days between a placement order and being matched with an adoptive family (A2)	Low	YTD Average	196.6	196.6	<b>185.7</b>	-	Financial Year	↑		127+	127<	121<	169	136	232.9	124.8	214.7	73.0	226.0	183.6
WORKFORCE & CASELOAD	11.4	Maximum caseload of social workers in LAC	Low	Average count	23	23	<b>23</b>	-	As at mth end	→		21+	20<	18<	-	19.2	17.0	18.0				
	11.5	Average number of cases per qualified social worker in LAC Teams 1-3	Within Limits	Average count	13.8	15	<b>14.6</b>	-	As at mth end	↓		over 1% above range	1% above range	14-20	-	-	-	12.6				
		Average number of cases per qualified social worker in LAC Teams 4 - 5	Within Limits	Average count	14.1	14.3	<b>13.8</b>	-	As at mth end	↓		over 1% above range	1% above range	14-20	-	-	-	11.8				

# LOOKED AFTER CHILDREN

**DEFINITION** Children in care or 'looked after children' are children who have become the responsibility of the local authority. This can happen voluntarily by parents struggling to cope or through an intervention by children's services because a child is at risk of significant harm.

**PERFORMANCE ANALYSIS**

As Chair of the Public Law Outline (PLO) Panel had identified in last month's performance report it was evident that there would be a relatively high number of admissions to care over the course of October, although it also has to be noted that of the 26 children admitted to care, 16 were in sibling groups. In addition there were 22 discharges making a net increase of only 4 children and the average age of those admitted to care fell once again from 6.9 years to 6.4 years. There are also 22 children already in the legal process for the discharge of their Care Order but court availability will impact on the timeliness of this process and unnecessarily delay the discharge and this issue is to be taken up in the Family Court User Forum.

There is growing evidence that the range of interventions is having a discernible impact on this issue. In comparing months 1 to 4 with months 8 to 12 over the past twelve months it can be evidenced that the admissions to care reduced from 121 to 92 while the discharges increased from 46 to 79. As a result the net increase reduced from 75 to 13 over the course of the year. The Edge of Care Service is making a significant contribution to this and of the 98 children allocated within the team only 14% have stepped up in terms of intervention (e.g.. from CiN to CP) with the remaining 86% being no closer or further away from becoming looked after than they were at the start of the intervention.

As a recent addition to the LAC Service the team are currently reporting on their agreed performance measures and so there will be a more comprehensive report available to next month's Performance Board. However, there is already a discernible shortfall in the service in that a lack of capacity is creating a 'waiting list' for longer-term therapeutic interventions.

**Data Note:** An issue has arisen within the Liquid Logic system which is impacting on the reporting LAC children. For some children who have left care and have had previous care episodes, the same 'end date' is copying into the previous episodes within the system. This has been reported, however, until this is rectified we will be unable to accurately report on measures regarding children ceasing care.

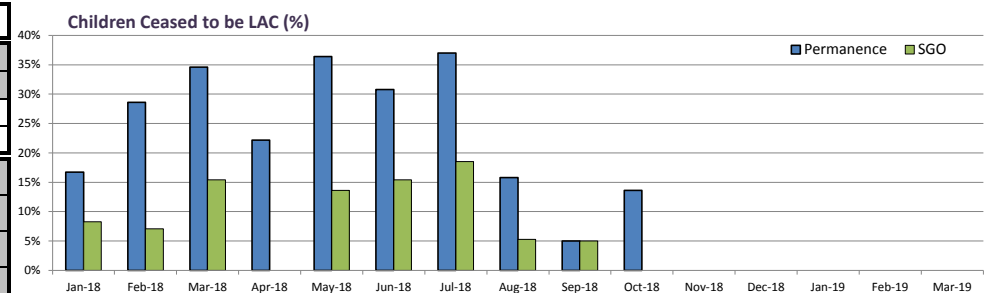
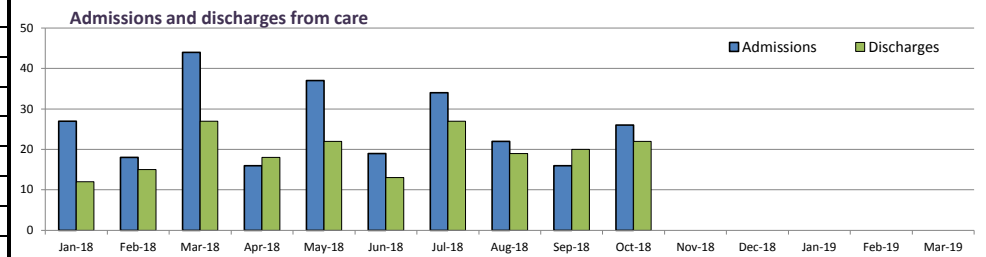
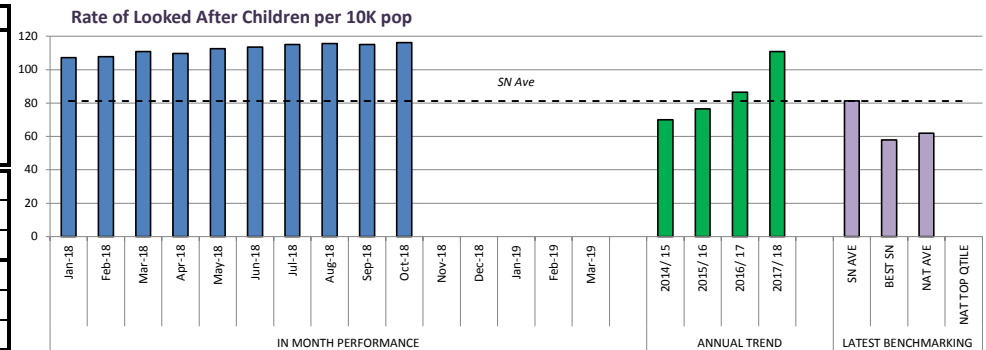
	6.2	6.1	6.3	6.4	6.5	6.6	6.7
	Rate of children looked after per 10K pop	Number of LAC	Admissions of children looked after	No. of children who have ceased to be LAC	% of children ceased to be LAC due to permanence	Number of SGOs started (all)	% of children ceased to be LAC due to an SGO

IN MONTH PERFORMANCE	Jan-18	107.3	607	27	12	16.7%	4	8.3%
	Feb-18	107.8	610	18	15	28.6%	4	7.1%
	Mar-18	110.8	627	44	27	34.6%	16	15.4%
	Apr-18	109.7	621	16	18	22.2%	0	0.0%
	May-18	112.6	637	37	22	36.4%	4	13.6%
	Jun-18	113.6	643	19	13	30.8%	3	15.4%
	Jul-18	115.0	651	34	27	37.0%	4	18.5%
	Aug-18	115.7	655	22	19	15.8%	1	5.3%
	Sep-18	115.0	651	16	20	5.0%	6	5.0%
	Oct-18	116.3	658	26	22	13.6%	4	0.0%
	Nov-18							
	Dec-18							
	Jan-19							
	Feb-19							
	Mar-19							

YTD	2018/19	-	-	170	141	23.4%	22	10.5%
-----	---------	---	---	-----	-----	-------	----	-------

ANNUAL TREND	2014/ 15	70.0	407	175	160	37.5%	-	-
	2015/ 16	76.6	432	208	192	40.1%	-	-
	2016/ 17	86.6	488	262	215	27.9%	-	9.8%
	2017/ 18	110.8	627	330	194	27.3%	67	8.2%

LATEST BENCHMARKING	SN AVE	81.3						
	BEST SN	58.0						
	NAT AVE	62.0						
	NAT TOP QTILE	-						



# LOOKED AFTER CHILDREN - REVIEWS, PLANS & VISITS

## DEFINITION

The purpose of LAC review meeting is to consider the plan for the welfare of the looked after child and achieve Permanence for them within a timescale that meets their needs. The review is chaired by an Independent Reviewing Officer (IRO)

The LA is also responsible for appointing a representative to visit the child wherever he or she is living to ensure that his/her welfare continues to be safeguarded and promoted. The minimum national timescales for visits is within one week of placement, then six weekly until the child has been in placement for a year and the 12 weekly thereafter. Rotherham have set a higher standard of within first week then four weekly thereafter until the child has been permanently matched to the placement.

## PERFORMANCE ANALYSIS

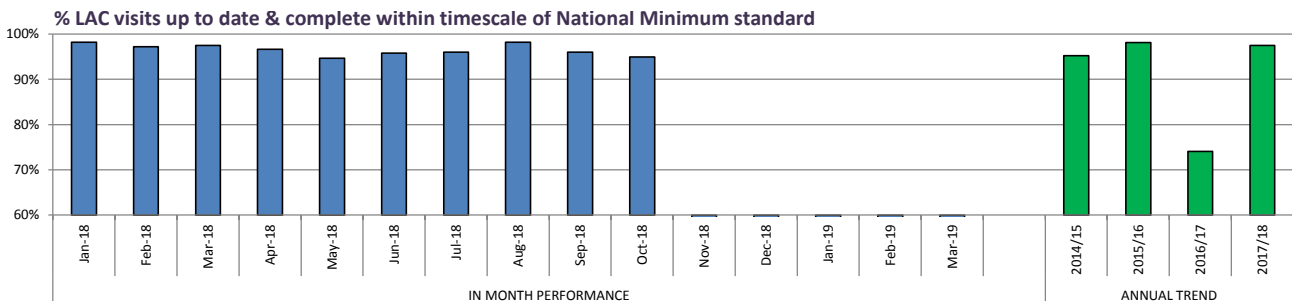
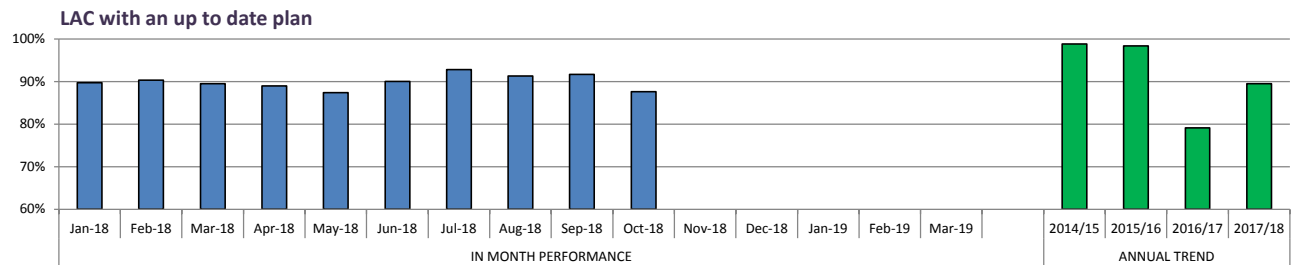
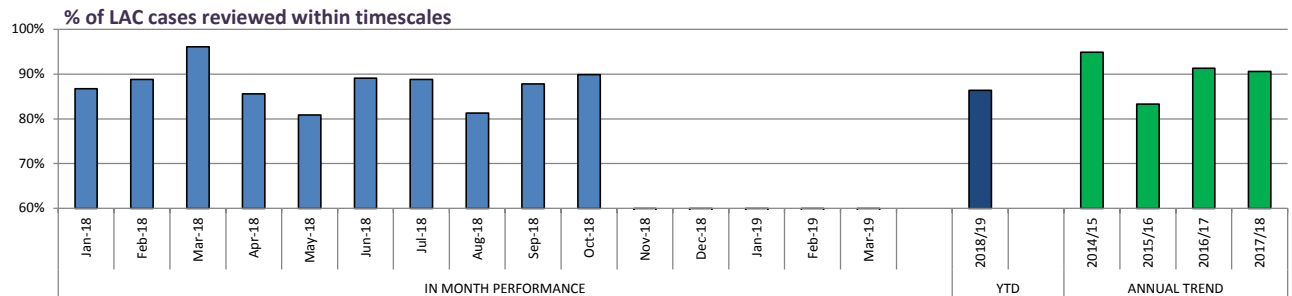
The timeliness of Statutory Reviews has improved once again this month to 133 out of 148 (89.9% up from a low of 80.9% in May) which seems primarily due to increased capacity within the IRO service.

Performance in respect of Statutory Visits has declined slightly to 95% but when the report is re-run this figure tends to improve indicating that these visits are taking place but that pressures on social work capacity impact on their ability to record these visits in a timely way. The timeliness of up to date Care Plans has dipped more significantly to only 87.6% and this will be a focus of management attention over the coming month.

The on-going demand for social workers to supervise contact continues to be a significant pressure on the LAC Service with the time demands being the equivalent of an additional 3 cases per social worker across the service. Recruitment of the additional contact worker resource continues but is likely to be a few months before these workers are in post and as a result the impact on social worker capacity and ability to sustain timeliness in stat visits is likely to be an on-going challenge for a few months yet.

6.8	6.14	6.16
% of LAC cases reviewed within timescales	LAC with an up to date plan	% LAC visits up to date & complete within timescale of National Minimum standard

IN MONTH PERFORMANCE	Jan-18	150 of 173	86.7%	89.7%	597 of 608	98.2%
	Feb-18	119 of 134	88.8%	90.3%	590 of 607	97.2%
	Mar-18	148 of 154	96.1%	89.5%	614 of 630	97.5%
	Apr-18	119 of 139	85.6%	89.0%	602 of 623	96.6%
	May-18	131 of 162	80.9%	87.4%	604 of 638	94.7%
	Jun-18	131 of 147	89.1%	90.0%	615 of 642	95.8%
	Jul-18	167 of 188	88.8%	92.8%	631 of 657	96.0%
	Aug-18	100 of 123	81.3%	91.3%	646 of 658	98.2%
	Sep-18	130 of 148	87.8%	91.7%	628 of 654	96.0%
	Oct-18	133 of 148	89.9%	87.6%	622 of 655	95.0%
	Nov-18					
	Dec-18					
Jan-19						
Feb-19						
Mar-19						
YTD	2018/19	911 of 1055	86.4%	-		-
ANNUAL TREND	2014/15		94.9%	98.8%		95.2%
	2015/16		83.3%	98.4%		98.1%
	2016/17	652 of 714	91.3%	79.1%		74.0%
	2017/18	1502 of 1658	90.6%	89.5%		97.5%



# LOOKED AFTER CHILDREN - HEALTH

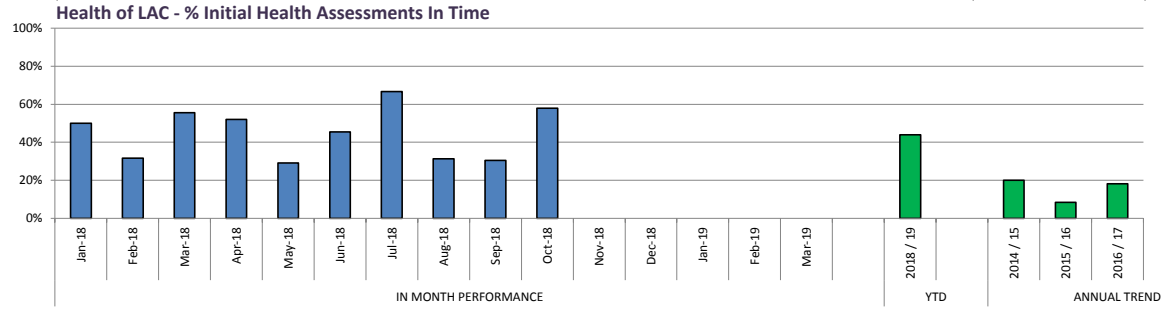
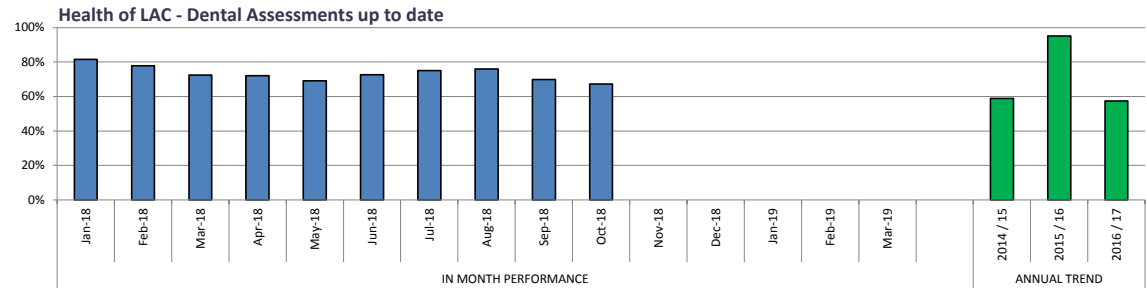
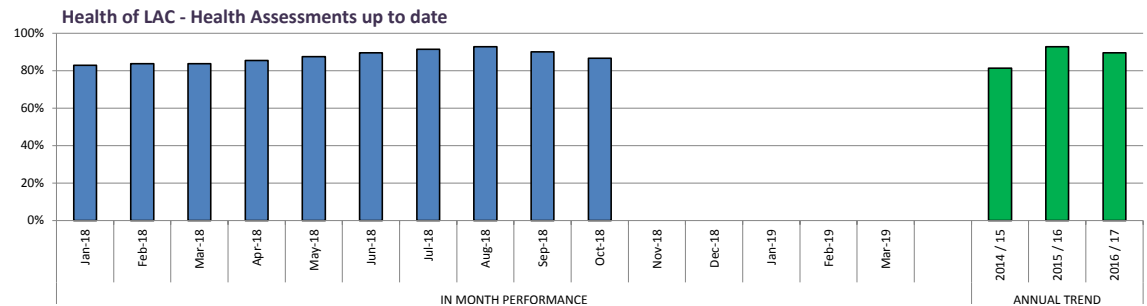
**DEFINITION** Local authorities have a duty to safeguard and to promote the welfare of the children they look after, therefore the local authority should make arrangements to ensure that every child who is looked after has his/her health needs fully assessed and a health plan clearly set out.

**PERFORMANCE ANALYSIS**

On average when the report is rerun the performance in respect of health assessments improves by 6% from that reported at month end and the dental checks improve by an average of 10%. However, the trend in all Health measures is demonstrating a decline in performance although past experience evidences that this is more likely to be an issue with inputting data rather than health and dental checks not taking place.

There was an improvement of the % of IHAs undertaken in 20 working days to 57.9% and a follow up Review of the IHA process has now been convened, with a meeting scheduled for 10th December to assess the impact of the review held in September.

		6.10	6.11	6.12	
		Health of LAC - Health Assessments up to date	Health of LAC - Dental Assessments up to date	Health of LAC - No. Initial Health Assessments In Time	Health of LAC - % Initial Health Assessments In Time
<b>IN MONTH PERFORMANCE</b>	Jan-18	82.9%	81.5%	9 of 18	50.0%
	Feb-18	83.7%	77.8%	6 of 19	31.6%
	Mar-18	83.7%	72.5%	10 of 18	55.6%
	Apr-18	85.5%	72.1%	13 of 25	52.0%
	May-18	87.5%	69.0%	7 of 24	29.2%
	Jun-18	89.6%	72.6%	15 of 33	45.5%
	Jul-18	91.4%	75.0%	10 of 15	66.7%
	Aug-18	92.8%	76.0%	5 of 16	31.3%
	Sep-18	90.0%	69.9%	7 of 23	30.4%
	Oct-18	86.6%	67.2%	11 of 19	57.9%
	Nov-18				
	Dec-18				
	Jan-19				
Feb-19					
Mar-19					
<b>YTD</b>	2018 / 19	-	-	68 of 155	43.9%
<b>ANNUAL TREND</b>	2014 / 15	81.4%	58.8%		20.0%
	2015 / 16	92.8%	95.0%		8.4%
	2016 / 17	89.5%	57.3%		18.2%
	2017 / 18	83.7%	72.5%	132 of 237	55.7%
<b>LATEST BENCHMARKING</b>	SN AVE				
	BEST SN				
	NAT AVE				
	NAT TOP QTILE				



# LOOKED AFTER CHILDREN - PERSONAL EDUCATION PLANS

## DEFINITION

A personal education plan (PEP) is a school based meeting to plan for the education of a child in care. The government have made PEPs a statutory requirement for children in care to help track and promote their achievements. Prior to September 2015 PEPs were in place for compulsory school-age children only. PEPs are now in place for LAC aged two to their 18th birthday.

## PERFORMANCE ANALYSIS

This is a termly report and the Virtual School reports that there are no known issues that would indicate any decline in performance.

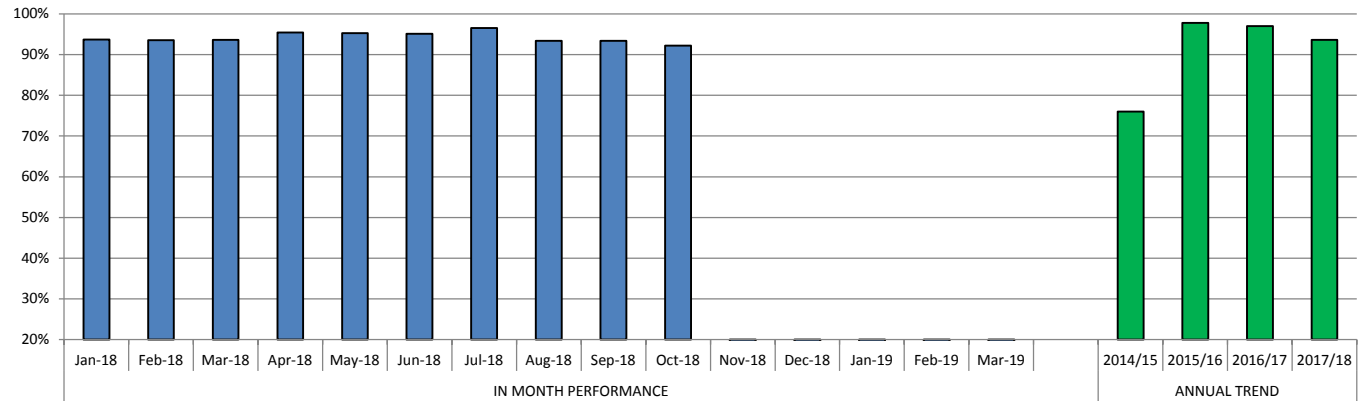
6.13		6.14
Number of Eligible LAC with a Personal Education Plan	% LAC with a Personal Education Plan	% LAC with up to date Personal Education Plan (Termly)

IN MONTH PERFORMANCE	Jan-18	446 of 476	93.7%	
	Feb-18	446 of 477	93.5%	
	Mar-18	454 of 485	93.6%	95.0% (Spring Term)
	Apr-18	461 of 483	95.4%	
	May-18	467 of 490	95.3%	
	Jun-18	470 of 494	95.1%	
	Jul-18	476 of 493	96.6%	97.4% (Summer Term)
	Aug-18	468 of 501	93.4%	
	Sep-18	480 of 514	93.4%	
	Oct-18	475 of 515	92.2%	
	Nov-18			
	Dec-18			(Autumn Term)
	Jan-19			
	Feb-19			
Mar-19			(Spring Term)	

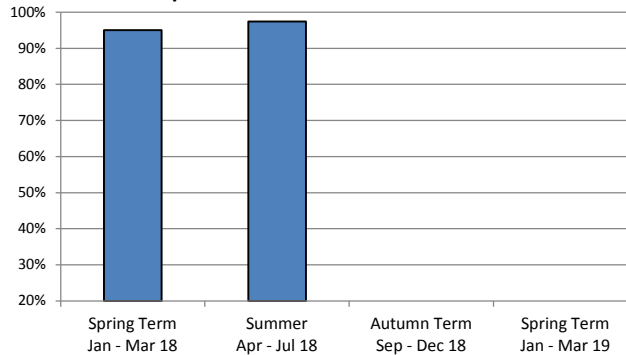
YTD	2018/19	-	-	-
-----	---------	---	---	---

ANNUAL TREND	2014/15		76.0%	-
	2015/16		97.8%	-
	2016/17		97.0%	98.9% (Summer 2017)
	2017/18		93.6%	(Summer 2018) (Summer 2018)

% LAC with a Personal Education Plan



% LAC with up to date PEP



# CARE LEAVERS

**DEFINITION** A care leaver is defined as a person aged 25 or under, who has been looked after away from home by a local authority for at least 13 weeks since the age of 14; and who was looked after away from home by the local authority at school-leaving age or after that date. Suitable accommodation is defined as any that is not prison or bed and breakfast.

**PERFORMANCE ANALYSIS**

Performance has stayed relatively stable in respect of care leavers with a Pathway Plan and up to date Pathway Plan which remain virtually unchanged at 95% and 94% respectively. The Peer Review in November also identified one Pathway Plan that was of 'Outstanding' quality and this will be used as a template of best practice especially for the LAC social workers who are less skilled in writing these plans.

Pressures on capacity remain a growing concern mainly due to the delays in securing agreement for recruitment via the Workforce Management Board but in addition, retention is becoming an issue given that RMBC pays its Personal Advisers a lower rate than many local authorities in the region. Despite this the number of care leavers in suitable accommodation has remained unchanged at 95.5% and the number of care leavers who are EET has risen from 61.6% to 63.6%.

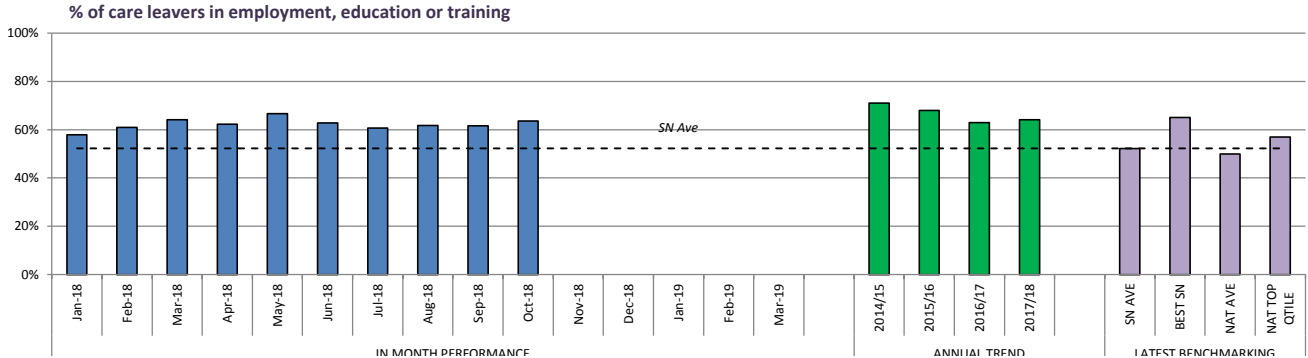
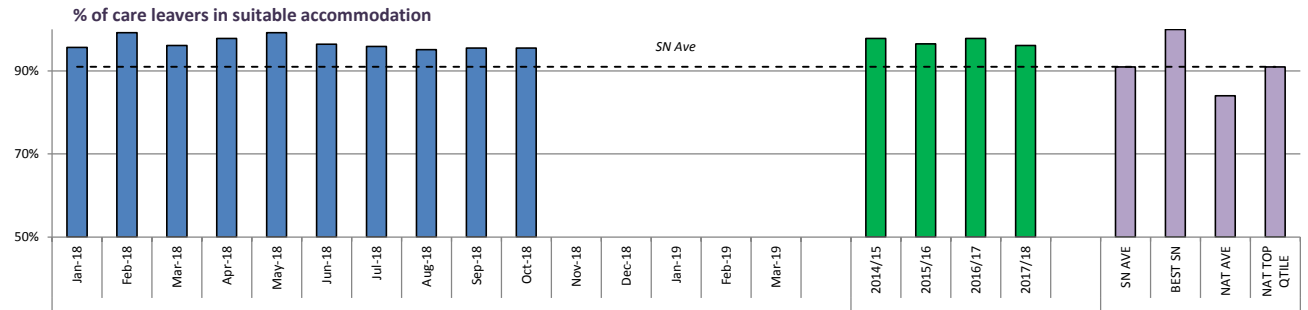
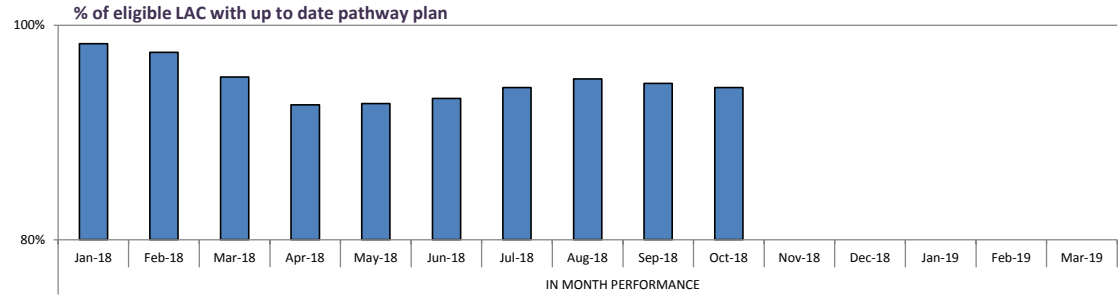
	7.1	7.2	7.3	7.4	7.5
	Number of care leavers	% of eligible Care Leavers with a pathway plan	% of eligible Care Leavers with up to date pathway plan	% of care leavers in suitable accommodation	% of care leavers in employment, education or training

IN MONTH PERFORMANCE	Jan-18	238	94.5%	98.3%	95.6%	57.9%
	Feb-18	246	93.9%	97.5%	99.2%	60.9%
	Mar-18	256	93.9%	95.2%	96.1%	64.1%
	Apr-18	267	93.4%	92.6%	97.8%	62.2%
	May-18	249	93.5%	92.7%	99.2%	66.7%
	Jun-18	247	93.6%	93.2%	96.4%	62.8%
	Jul-18	244	94.7%	94.2%	95.9%	60.7%
	Aug-18	243	95.4%	95.0%	95.1%	61.7%
	Sep-18	245	95.0%	94.6%	95.5%	61.6%
	Oct-18	242	95.0%	94.2%	95.5%	63.6%
	Nov-18					
	Dec-18					
	Jan-19					
Feb-19						
Mar-19						

YTD	2018/19	-	-	-	-	-
-----	---------	---	---	---	---	---

ANNUAL TREND	2014/15	183	-	-	97.8%	71.0%
	2015/16	197	69.8%	-	96.5%	68.0%
	2016/17	223	99.3%	-	97.8%	62.9%
	2017/18	256	93.9%	70.3%	96.1%	64.1%

LATEST BENCHMARKING	SN AVE				91.0%	52.2%
	BEST SN				100.0%	65.0%
	NAT AVE				84.0%	50.0%
	NAT TOP QTILE				91.0%	57.0%





# LOOKED AFTER CHILDREN - PLACEMENTS

## DEFINITION

A LAC placement is where a child has become the responsibility of the local authority (LAC) and is placed with foster carers, in residential homes or with parents or other relatives.

## PERFORMANCE ANALYSIS

Placement stability has improved yet again in both measures and as a measure of the impact of social work interventions it could be argued that this is the most revealing. The children in the same placement for 2+ years now stands at 69.2%, the highest it has ever been. The number of children with 3 or more placements in the past 12 months is down to 12.1%, a generally downward trend as from May but also the joint lowest figure for the past 12 months.

In addition the number of children in Family Based Settings has increased again to 82.7% as has the percentage of LAC living at home although this is likely to be impacted by the delay in Court availability to discharge Care Orders.

	8.1		8.2		8.3		8.4		8.5	
	Long term LAC placements stable for at least 2 years		LAC who have had 3 or more placements - rolling 12 mth		% of LAC in a family Based setting (includes living with parents)		% of LAC placed with parents or other with parental responsibility (P1)		LAC in a Commissioned Placement (Fostering & Residential)	

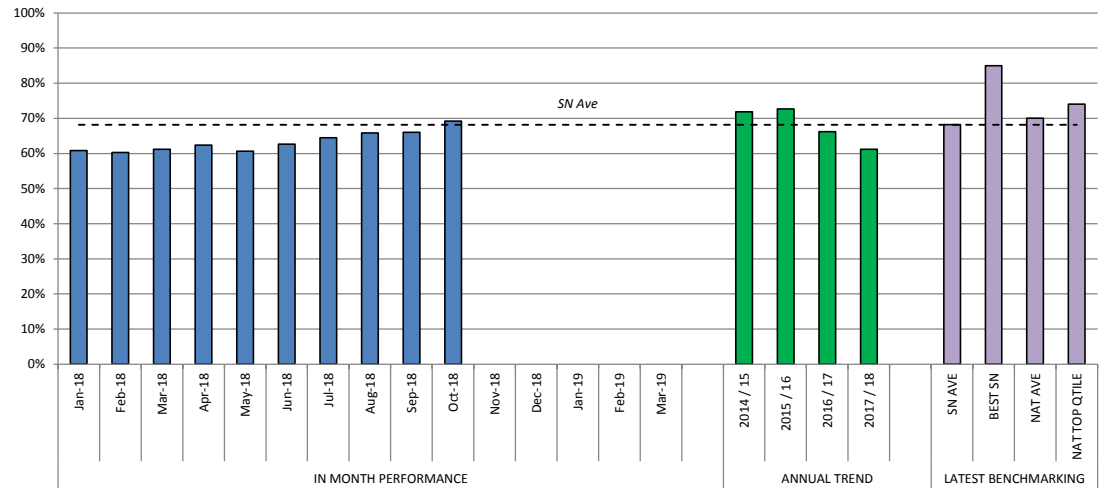
IN MONTH PERFORMANCE	Jan-18	93 of 153	60.8%	73 of 600	12.2%	82.4%	5.5%	293 of 607	48.3%
	Feb-18	91 of 151	60.3%	81 of 605	13.4%	81.5%	5.0%	302 of 610	49.5%
	Mar-18	90 of 147	61.2%	83 of 621	13.4%	81.0%	4.3%	315 of 627	50.2%
	Apr-18	91 of 146	62.3%	89 of 617	14.4%	81.0%	4.7%	317 of 621	51.0%
	May-18	91 of 150	60.7%	94 of 635	14.8%	80.8%	5.0%	319 of 637	50.1%
	Jun-18	94 of 150	62.7%	88 of 640	13.8%	81.0%	5.0%	338 of 643	52.6%
	Jul-18	96 of 149	64.4%	82 of 649	12.6%	82.3%	5.1%	345 of 651	53.0%
	Aug-18	100 of 152	65.8%	79 of 652	12.1%	82.9%	6.0%	340 of 655	51.9%
	Sep-18	99 of 150	66.0%	82 of 648	12.7%	82.3%	5.5%	342 of 651	52.5%
	Oct-18	101 of 146	69.2%	79 of 651	12.1%	82.7%	5.8%	342 of 658	52.0%
	Nov-18								
	Dec-18								
	Jan-19								
Feb-19									
Mar-19									

YTD	2018 / 19		-	-	-	-	-	-	-
-----	-----------	--	---	---	---	---	---	---	---

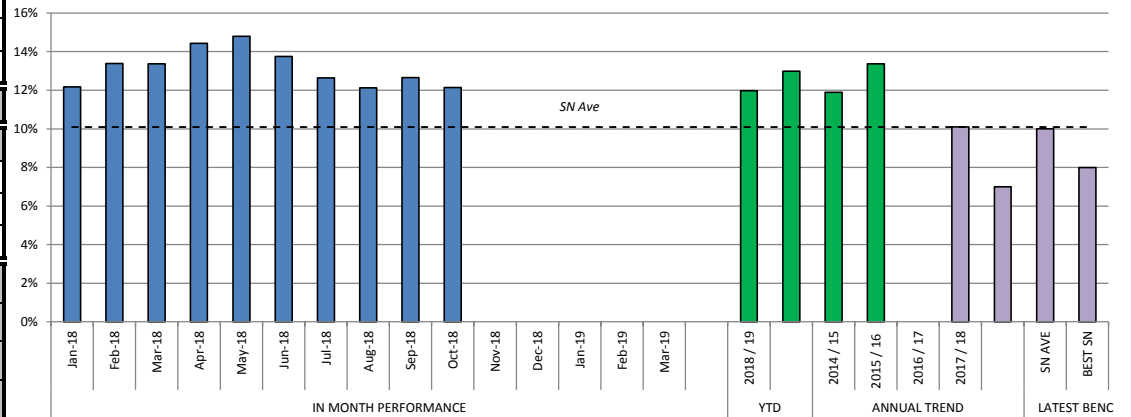
ANNUAL TREND	2014 / 15	110 of 153	71.9%	49 of 409	12.0%	-	-	-	-
	2015 / 16	109 of 150	72.7%	56 of 431	13.0%	-	-	188 of 431	43.6%
	2016 / 17	96 of 145	66.2%	58 of 488	11.9%	81.1%	5.3%	211 of 488	43.2%
	2017 / 18	90 of 147	61.2%	83 of 621	13.4%	81.0%	4.3%	315 of 624	50.5%

LATEST BENCHMARKING	SN AVE		68.2%		10.1%				
	BEST SN		85.0%		7.0%				
	NAT AVE		70.0%		10.0%				
	NAT TOP QTILE		74.0%		8.0%				

% long term LAC placements stable for at least 2 years



% LAC who have had 3 or more placements - rolling 12 months



# FOSTERING

## DEFINITION

A foster care family provide the best form of care for most Looked after children. Rotherham would like most of its children to be looked after by its own carers so that they remain part of their families and community .

## PERFORMANCE ANALYSIS

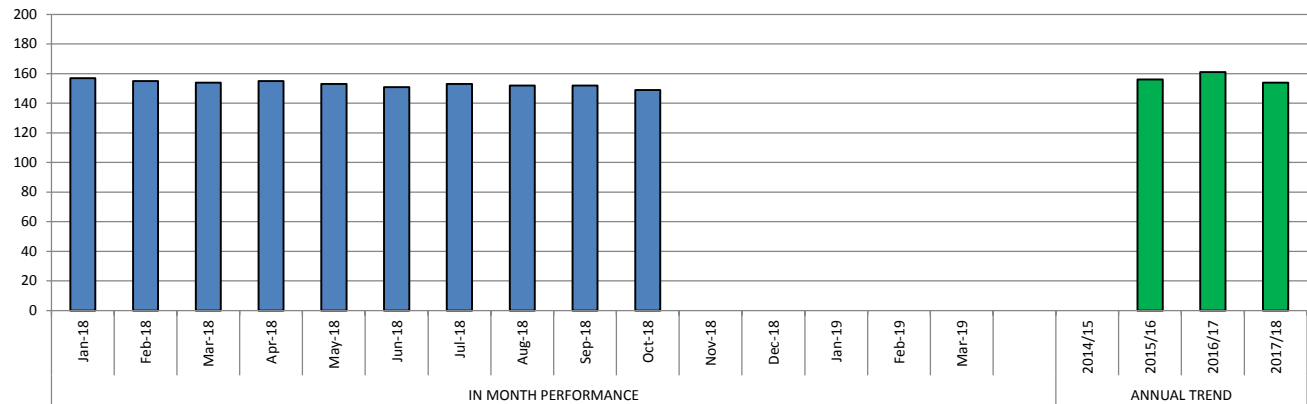
The recruitment of foster carers remains a key priority and significant challenge for the LAC Service and is, at present probably the one aspect of performance within the LAC Service that seems the hardest to shift. The number of de-registrations/resignations is now surpassing recruitment with the number of available foster families reducing to 149 from a high of 157 in January. Within this it has to be recognised that many of the retirees had not offered any placement for several months and so the impact in real terms is less significant than would first appear.

However, effective foster carer recruitment remains a significant concern with the revised Marketing Strategy undergoing further review. This was one area of focus requested from Lincolnshire in the recent Peer Review and a number of recommended actions will be considered in order to boost recruitment. One very positive aspect is that the Muslim Foster Carer project looks to be increasingly likely to deliver a number of foster carers over the course of 2019.

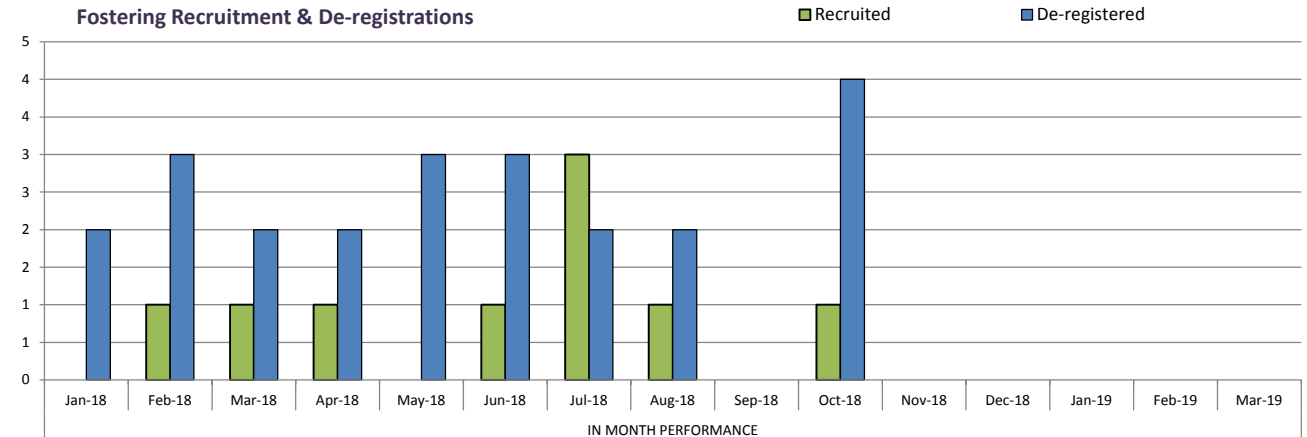
	9.1	9.2	9.3	9.4	9.5
	Number of LAC in a Fostering Placement (excludes relative/friend)	% of total LAC in a Fostering Placement (excludes relative/friend)	Number of Foster Carers (Households)	Number of Foster Carers Recruited (Households)	Number of Foster Carers De-registered (Households)

IN MONTH PERFORMANCE	Jan-18	398	65.6%	157	0	2
	Feb-18	399	65.4%	155	1	3
	Mar-18	414	66.0%	154	1	2
	Apr-18	409	65.9%	155	1	2
	May-18	418	65.6%	153	0	3
	Jun-18	427	66.4%	151	1	3
	Jul-18	443	68.0%	153	3	2
	Aug-18	439	67.0%	152	1	2
	Sep-18	437	67.1%	152	0	0
	Oct-18	443	67.3%	149	1	4
	Nov-18					
	Dec-18					
	Jan-19					
	Feb-19					
	Mar-19					
YTD	2018/19	-	-	-	7	16
ANNUAL TREND	2014/15	-	-	-	-	-
	2015/16	-	-	156	13	16
	2016/17	353	72.3%	161	32	22
	2017/18	414	66.0%	154	16	25

Number of Foster Carers



Fostering Recruitment & De-registrations



# ADOPTIONS

## DEFINITION

Following a child becoming a LAC, it may be deemed suitable for a child to become adopted which is a legal process of becoming a non-biological parent. The date it is agreed that it is in the best interests of the child that they should be placed for adoption is known as their 'SHOBPA'. Following this a family finding process is undertaken to find a suitable match for the child based on the child's needs, they will then be matched with an adopter(s) followed by placement with their adopter(s). This adoption placement is monitored for a minimum of 10 weeks and assessed as stable and secure before the final adoption order is granted by court decision and the adoption order is made .  
Targets for measures A1 and A2 are set centrally by government office.

## PERFORMANCE ANALYSIS

The 2 adoptions achieved in October slightly improved performance in respect of the A1 scorecard from 353 days to 351 days and in the A2 scorecard from 196 to 185 days.

In addition to the 14 adoptions completed thus far this financial year there are 25 children already in their adoptive placements of which 11 have Court dates set for the Adoption hearing. The year end forecast remains likely to be at 31-34 adoptions which is an improvement on last year.

There have been 13 sets of adoptive parents fully approved so far this year with seven more at stage 1, and six at stage 2 and so once again last year's performance looks likely to be surpassed with the forecast of 23/24 over the year as compared to 14 approvals last year.

Data Note: Taken from manual tracker. Data requires inputting into LCS

	10.1	10.2	10.3	10.4	10.5
<b>Number of adoptions</b>		<b>Number of adoptions completed within 12 months of SHOBPA</b>	<b>% adoptions completed within 12 months of SHOBPA</b>	<b>Av. No. days between a child becoming LAC &amp; having a adoption placement (A1) (ytd. ave)</b>	<b>Av. No. days between placement order &amp; being matched with adoptive family (A2) (ytd. ave)</b>

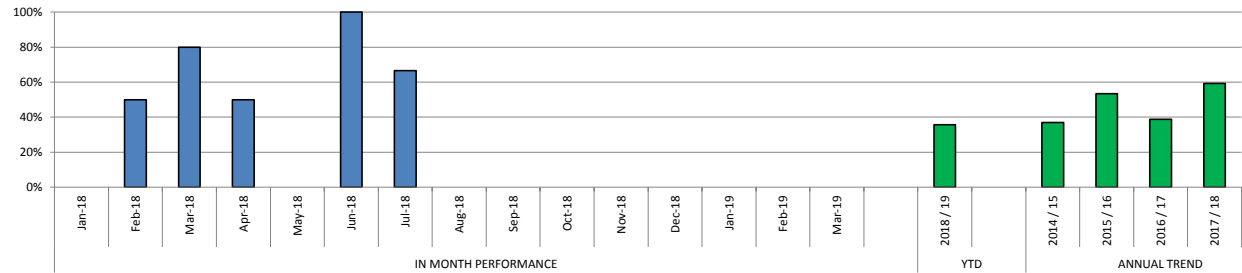
IN MONTH PERFORMANCE	Jan-18	0	0	-	315.0	137.0
	Feb-18	2	1	50.0%	311.9	134.9
	Mar-18	5	4	80.0%	325.3	124.8
	Apr-18	2	1	50.0%	370.0	146.5
	May-18	3	0	0.0%	469.0	260.2
	Jun-18	2	2	100.0%	369.0	201.9
	Jul-18	3	2	66.7%	339.4	163.8
	Aug-18	2	0	0.0%	353.9	196.6
	Sep-18	0	0	-	353.9	196.6
	Oct-18	2	0	0.0%	351.4	185.7
	Nov-18					
	Dec-18					
	Jan-19					
Feb-19						
Mar-19						

YTD	2018 / 19	14	5	35.7%	-	-
ANNUAL TREND	2014 / 15	-	-	37.0%	393.0	169.0
	2015 / 16	43	23	53.5%	296.0	136.0
	2016 / 17	31	12	38.7%	404.0	232.9
	2017 / 18	27	16	59.3%	325.3	124.8

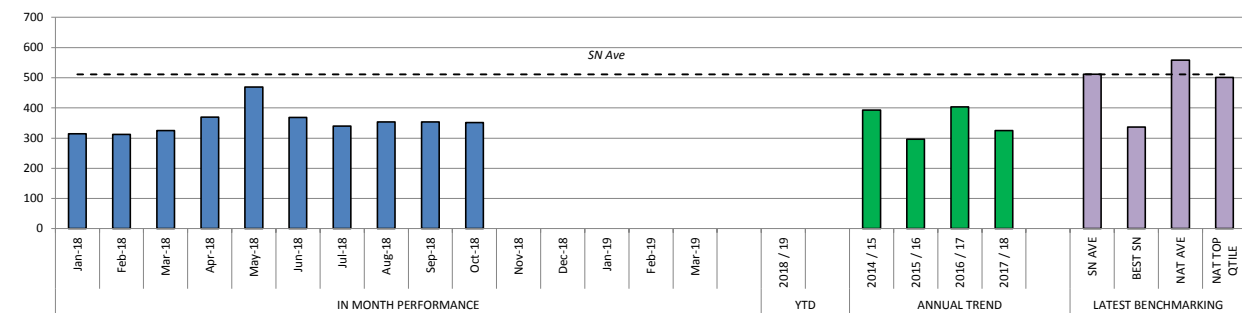
LATEST BENCHMARKING	SN AVE				511.6	214.7
	BEST SN				337.0	73.0
	NAT AVE				558.0	226.0
	NAT TOP QTILE				501.1	183.6

\*Annual Trend relates to current reporting year April to Mar - not rolling year  
\*\*adoptions have a 28 day appeal period so any children adopted in the last 28 days are still subject to appeal

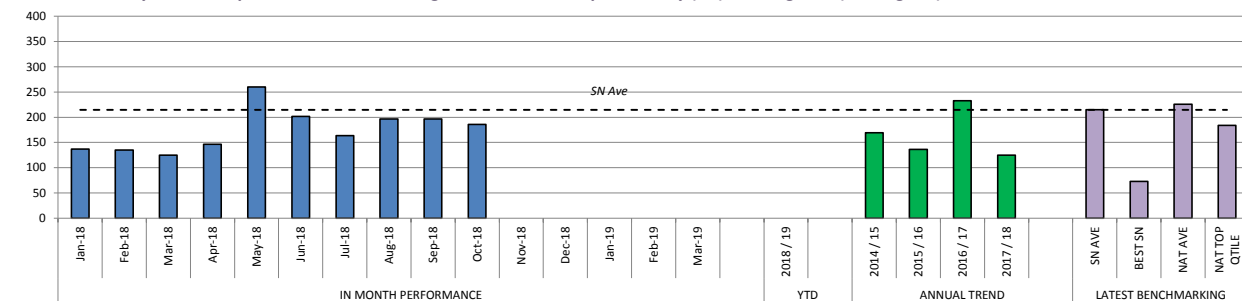
% adoptions completed within 12 months of SHOBPA



Av. No. days between a child becoming LAC & having a adoption placement (A1) - Rolling Year (low is good)



Av. No. days between placement order & being matched with adoptive family (A2) - Rolling Year (low is good)



# CASELOADS

## DEFINITION

Caseload figures relate to the number of children the social worker is currently the lead key worker. Fieldwork teams relate to frontline social care services including the four Duty Teams, none Long Term CIN Teams, two LAC teams and the CSE Team. All averages are calculated on a full time equivalency basis, based on the number of hours the worker is contracted to work.

## PERFORMANCE ANALYSIS

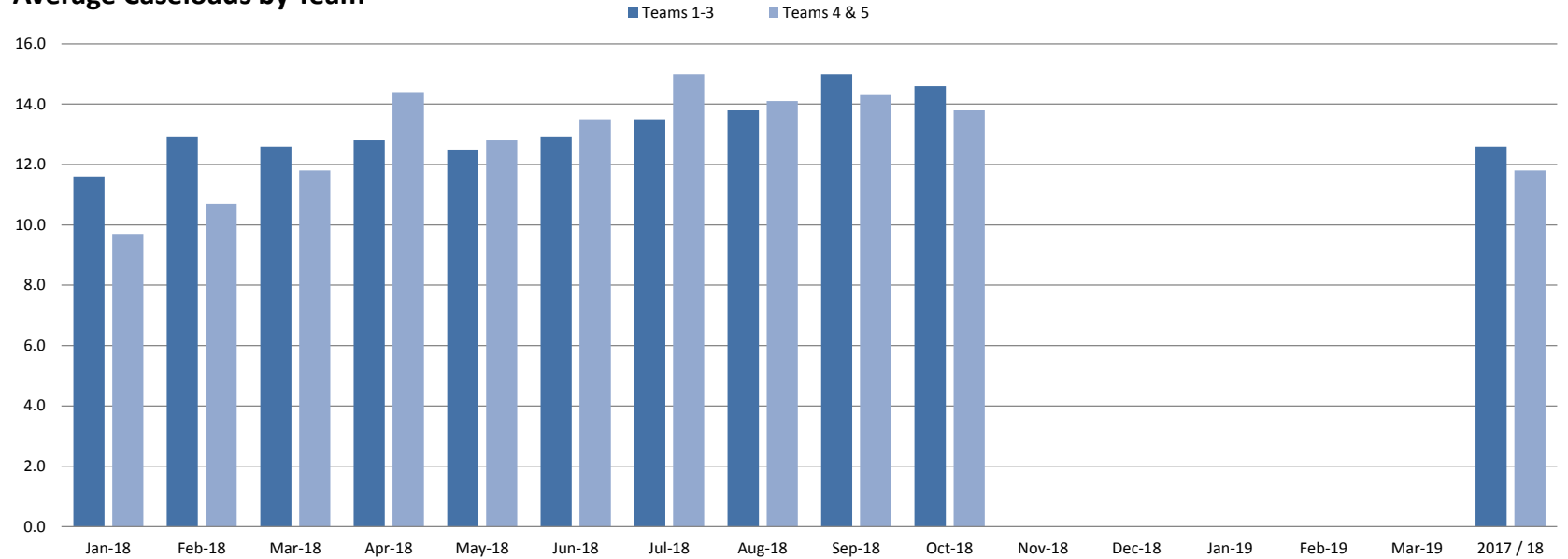
The calculation for average caseloads ( below) does not take into account the reduced caseloads of social workers on a phased return to work, 'Assessed and Supported Year in Employment' (ASYE) social workers and 'Advanced Practitioner' (APs), average caseloads for all LAC teams continues to increase was 17.25. The Court and Permanence teams have similarly increased caseloads which was an average of 15.75, although each case in proceedings presents a disproportionate level of work. Both of these are part of an on-going rising trend and they are beginning to impact on performance and quality of interventions with direct work and life-story work being increasingly difficult to accommodate.

As a result of the pressures on the Court and Permanence teams the long-term LAC teams are allocating increasing numbers of care proceedings which once again has a disproportionate impact on overall capacity with this being further aggravated by the on-going pressures of supervising contact at an average of the equivalent of 3 cases per social worker.

The Social Care Pathway Review is on-going but until any recommendations from this group are implemented it is likely that sustaining current levels of performance is going to be an increasing challenge.

	11.3	11.4	
Maximum caseload of social workers in LAC Teams		Av. no. cases in LAC Teams	
		Teams 1-3	Teams 4 & 5

## Average Caseloads by Team



IN MONTH PERFORMANCE	Jan-18	17	11.6	9.7
	Feb-18	17	12.9	10.7
	Mar-18	18	12.6	11.8
	Apr-18	22	12.8	14.4
	May-18	22	12.5	12.8
	Jun-18	22	12.9	13.5
	Jul-18	21	13.5	15.0
	Aug-18	23	13.8	14.1
	Sep-18	23	15.0	14.3
	Oct-18	23	14.6	13.8
	Nov-18			
	Dec-18			
	Jan-19			

YTD	2018/19	-	-	-
-----	---------	---	---	---

ANNUAL TREND	2014/15	-	-
	2015/16	19	14.1
	2016/17	17	11.6
	2017 / 18	18	12.6