

Introduction



The Safer Rotherham
PARTNERS

**Clr Emma Hoddinott,
Cabinet Member for Waste, Roads and Community Safety
Chair of the Safer Rotherham Partnership Board**

- Performance Highlights – 2018-19
- Project Highlights – 2018-19
- Forward Look – 2019 – 20
- Key Issues for the Health and Well-Being Board

Current Priorities (2019-20)

Sam Barstow, Head of Community Safety and Regulatory Services



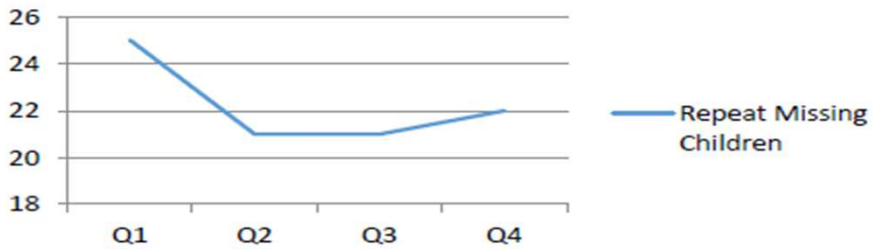
The Safer Rothamsted
PARTNERS

| Priority Area | Recommended Focus 2019/20 |
|--|---|
| Protecting Vulnerable Children | Tackling Child Criminal Exploitation Prevent Child Sexual Exploitation Preventing Online Offending Reduce the number of repeat Missing Children Preventing Offending |
| Protecting Vulnerable Adults | Preventing Offending Preventing Modern Slavery and Mate Crime Reducing Repeat Victims of Crime |
| Building Confident and Cohesive Communities | Involving communities in tackling community safety priority locations Protecting vulnerable people from extremism and terrorism Preventing hate Effective Response to Community Tensions |
| Preventing Domestic Abuse and Other Related Offences | Domestic Violence and Abuse Rape and Serious Sexual Offences Stranger Stalking and Harassment Honour Based Abuse |
| Preventing Serious and Organised Crime | Child Criminal Exploitation Violent Crime Drug Supply |



Performance Highlights

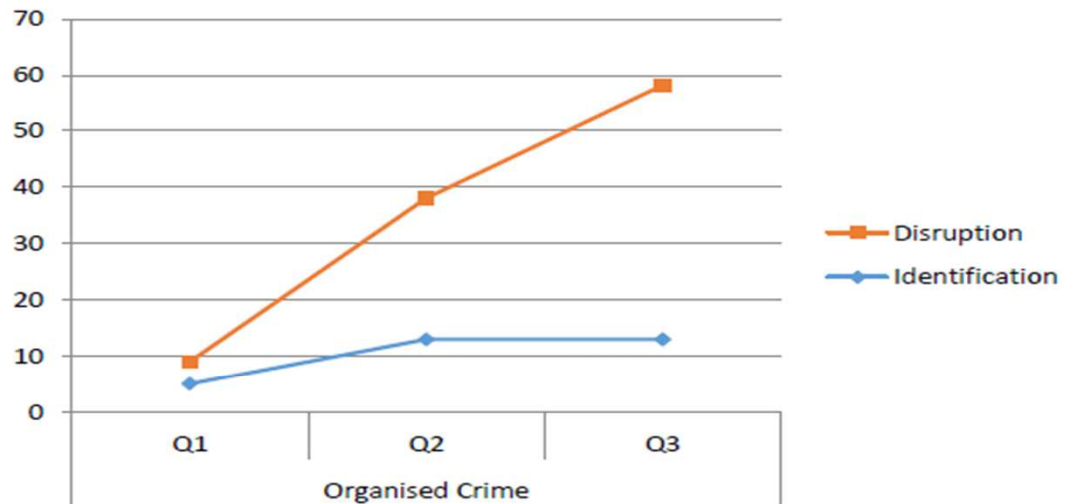
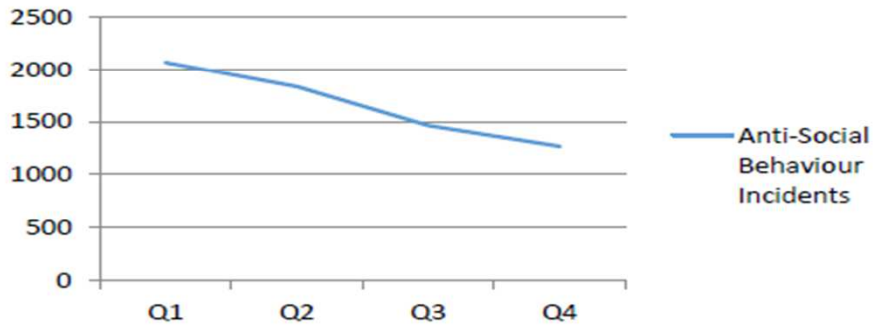
Repeat Missing Children



First time young offenders down from 229 to 194

Over 100 engagement sessions regarding Countering Extremism

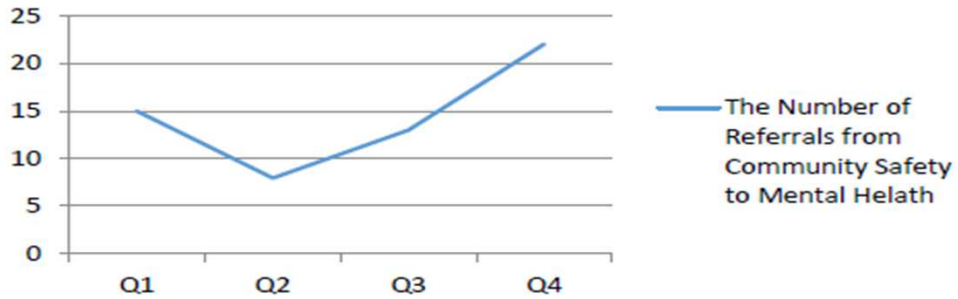
Anti-Social Behaviour Incidents



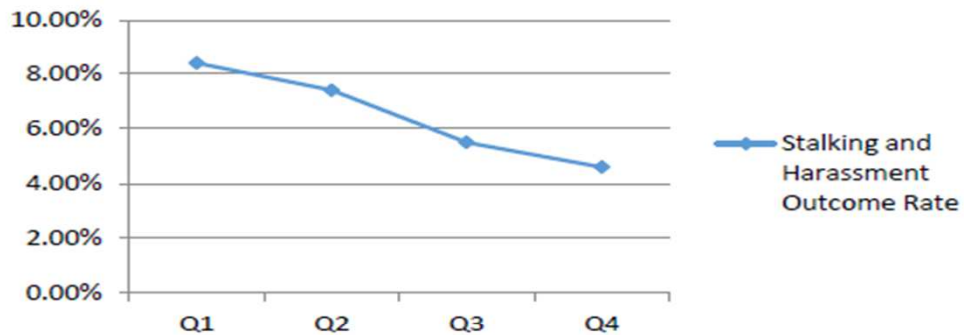


Performance Challenges

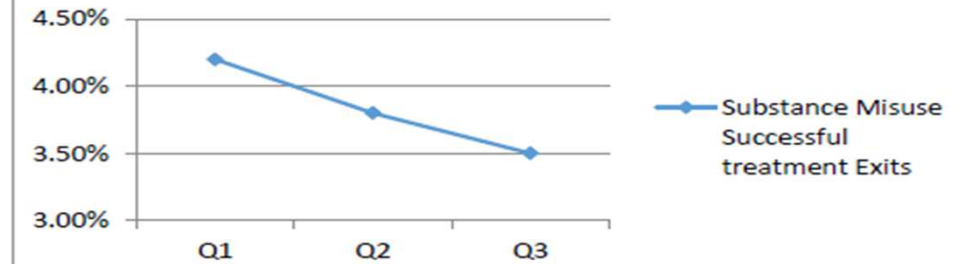
Mental Health Referrals



Stalking and Harassment



Substance Misuse



Project Highlights



The Safer Rotherham
PARTNERS

Hate Crime

101 crimes/incidents reported

120 Drop in sessions
45 Awareness Raising Sessions

6 new panel members

165 women part of a network

Kickz

120 Young people engaged

12 Educational workshops for young people

7 Community events and tournaments

20 Young people referred on to educational programmes etc

Perpetrator Programme

ADD TEXT

Engagement Activity

1224 families receiving leaflet on protecting children from extremism

3499 young people participating in the lifestyle survey
7 young people attending a consultation event

7 DA victims engaged by a 'DA Car' over the christmas period

Training Activity

Hate Crime/Extremism - Sophie Lancaster Foundation

Co-abuse training for DA practitioners

Organised Crime sessions within schools

Training for responsible authorities under the licensing act

Extreme right wing ideology



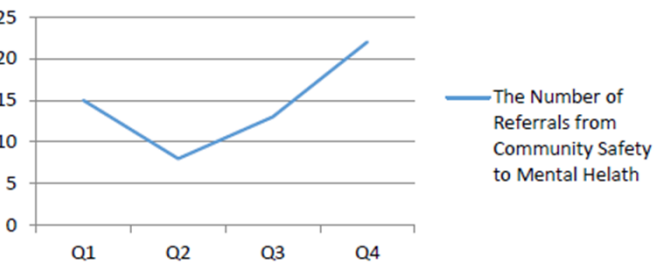
Forward Look

- Continuing to develop co-located teams
- Licensing – Gambling, Training and Sex establishments
- Embedding delivery of the Child Criminal Exploitation Project
- Tackling Harmful Narratives and Hate Crime
- Focusing on Environmental Crime, Drug Use/Supply and Off Road Motorcycles
- Exploring and Promoting Intelligence across agencies
- Community Payback in Local Communities
- Hate Crime Strategy
- Anti-Social Behaviour Strategy



Items for Discussion

Mental Health Referrals



Preventing Serious and Organised Crime

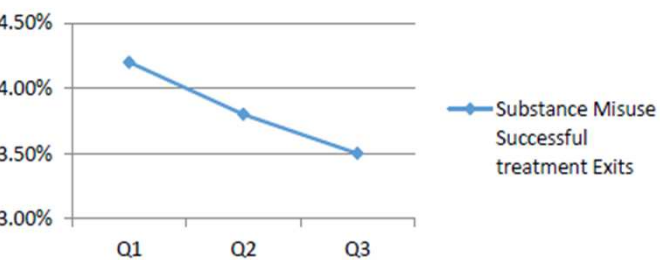
- How do we raise awareness within Health Services



Protecting Vulnerable Children

- Barriers to reporting Intelligence
- Drug use/supply
- Criminal Exploitation

Substance Misuse



Preventing Domestic Abuse

- Domestic Abuse Services Review



Building Confident Cohesive Communities

- Co-located teams – mental health support



Protecting Vulnerable Adults

- Mate Crime
- Substance Misuse