

Corporate Parenting Monthly Performance Report

As at Month End: April 2019

Please note: Data reports are not dynamic. Although care is taken to ensure data is as accurate as possible every month, delays in data input can result in changes in figures when reports are re-run retrospectively. To combat this at least two individual months data is rerun for each indicator.

Document Details

Status: Issue 1

Date Created: 21/05/19

Created by: Performance & Quality Team

Performance Summary

As at Month End: April 2019

*DOT - Direction of travel represents the direction of 'performance' since the previous month with reference to the polarity of 'good' performance for that measure. Colours have been added to help distinguish better and worse performance. Key Below:-

- ↑ - improvement in performance / increase in numbers
- - no movement - numbers stable with last month
- ↓ - decline in performance, not on target / decrease in numbers

NO.	INDICATOR	GOOD PERF IS	DATA NOTE (Monthly)	2018 / 19			2019 / 20		DOT (Month on Month)	RAG (in month)	Target and Tolerances			YR ON YR TREND					LATEST BENCHMARKING			
				Feb-20	Mar-20	Apr-19	YTD 2018/19	DATA NOTE			Red	Amber	Target Green	2014/15	2015/16	2016/17	2017/18	2018/19	STAT NEIGH AVE	BEST STAT NEIGH	NAT AVE	NAT TOP QTLILE THRESHOL
6.1	Number of Looked After Children	Info	Count	646	642	627	-	As at mth end	↓			n/a	407	432	488	627	642					
6.2	Rate of Looked After Children per 10,000 population aged under 18 (Council Plan Indicator)	Low	Rate per 10,000	113.4	112.7	110.1	-	As at mth end	↑			99.1	70	76.6	86.6	110.8	112.7	87.8	62.0	64.0	-	
6.3	Admissions of Looked After Children	Info	Count	30	14	16	16	Financial Year	↑			n/a	175	208	262	330	271					
6.4	Number of children who have ceased to be Looked After Children	High	Count	11	16	29	29	Financial Year	↑			n/a	160	192	215	194	249					
6.5	Percentage of LAC who have ceased to be looked after due to permanence (Special Guardianship Order, Residence Order, Adoption)	High	Percentage	54.5%	31.3%	27.6%	27.6%	Financial Year	↓		<33%	33%>	35%+	37.5%	40.1%	27.9%	27.3%	31.7%				
6.6	Number of SGOs started (Legal Status)	High	Count	2	4	2	2	Financial Year	↓				-	-	-	67	33					
6.7	Percentage of LAC who have ceased to be looked after due to a Special Guardianship Order	High	Percentage	11.1%	25.0%	6.9%	6.9%	Financial Year	↓				-	-	9.8%	8.2%	13.3%	12.3% (2017)	22.0% (2017)	12.0% (2017)	17.0% (2017)	
6.8	LAC cases reviewed within timescales	High	Percentage	93.7%	91.2%	93.4%	93.4%	Financial Year	↑		<90%	90%>	95%+	94.9%	83.3%	91.3%	90.6%	88.5%				
6.9	% of children adopted	High	Percentage	0.0%	0.0%	3.4%	3.4%	Financial Year	↑	YTD	<20%	20%>	22.7%+	26.3%	22.4%	14.4%	13.9%	12.9%	19.2%	32.0%	13.0%	19.0%
6.10	Health of Looked After Children - up to date Health Assessments	High	Percentage	87.4%	84.8%	76.3%	-	As at mth end	↓		<90%	90%>	95%+	81.4%	92.8%	89.5%	83.7%	84.8%				
6.11	Health of Looked After Children - up to date Dental Assessments	High	Percentage	90.7%	88.2%	82.6%	-	As at mth end	↓		<90%	90%>	95%+	58.8%	95.0%	57.3%	72.5%	88.2%				
6.12	Health of Looked After Children - Initial Health Assessments carried out within 20 working days	High	Percentage	100.0%	54.5%	72.2%	72.2%	Financial Year	↑				20.0%	8.4%	18.2%	55.7%	51.7%					
6.13	% of LAC with a PEP	High	Percentage	96.0%	97.2%	95.9%	-	As at mth end	↓		<90%	90%>	95%+	76.0%	97.8%	97.0%	93.6%	96.2%				
6.14	% of LAC with up to date PEPs (Report Termly - End Jul, Dec, Mar)	High	Percentage	-	96.7%	-	-	As at term end	n/a		<90%	90%>	95%+	-	-	98.9%	97.4%	Aug 19				
NEW	LAC Overall absence - % of sessions lost due to absence	Low	Percentage	-	6.5%	6.2%	-	As at mth end	new				5.0%	4.1%	5.7%	4.7%	Aug 19	4.7%	3.5%	4.5%	3.8%	
NEW	% of LAC who are classed as persistent absentees	Low	Percentage	-	14.2%	16.6%	-	As at mth end	new				11.7%	12.2%	13.3%	11.7%	Aug 19	10.0%	7.1%	10.6%	8.8%	
NEW	% of LAC with at least one fixed term exclusion	Low	Percentage	-	10.1%	10.4%	-	As at mth end	new				11.8%	13.1%	15.5%	TBC	Aug 19	13.7%	9.0%	11.8%	9.6%	
NEW	% of LAC receiving less than the 25 hour statutory entitlement	Low	Percentage	-	-	3.5%	-	As at mth end	new				-	-	-	-	-					
NEW	% of LAC on reduced timetable arrangements	Low	Percentage	-	-	3.7%	-	As at mth end	new				-	-	-	-	-					
6.20	% of eligible LAC with an up to date plan	High	Percentage	87.0%	98.0%	94.7%	-	As at mth end	↓		<93%	93%>	95%+	98.8%	98.4%	79.1%	89.5%	98.0%				
6.21	% LAC visits up to date & completed within timescale of National Minimum standard	High	Percentage	97.8%	96.4%	95.5%	-	As at mth end	↓		<95%	95%>	98%+	95.2%	98.1%	74.0%	97.5%	96.4%				
7.1	Number of care leavers	Info	Count	297	299	303	-	As at mth end	↑			n/a	183	197	223	256	299					
7.2	% of eligible LAC & Care Leavers with a pathway plan	High	Percentage	85.3%	85.4%	85.3%	-	As at mth end	↓		<93%	93%>	95%+	-	69.8%	99.3%	93.9%	85.4%				
7.3	% of eligible LAC & Care Leavers with an up to date pathway plan	High	Percentage	78.5%	80.0%	77.6%	-	As at mth end	↓					-	-	-	70.3%	80.0%				
7.4	% of care leavers in suitable accommodation	High	Percentage	96.6%	96.3%	96.0%	-	As at mth end	↓		<95%	95%>	98%+	97.8%	96.5%	97.8%	96.1%	96.3%	88.3%	94.0%	84.0%	91.0%
7.5	% of care leavers in employment, education or training	High	Percentage	65.7%	64.2%	60.1%	-	As at mth end	↓		<70%	70%>	72%+	71.0%	68.0%	62.9%	64.1%	64.2%	56.0%	73.0%	51.0%	59.0%
8.1	% of long term LAC in placements which have been stable for at least 2 years	High	Percentage	62.2%	62.6%	62.3%	-	As at mth end	↓		<68%	68%>	70%+	71.9%	72.7%	66.2%	61.2%	62.6%	67.6%	78.0%	70.0%	74.0%
8.2	% of LAC who have had 3 or more placements - rolling 12 months (Council Plan Indicator)	Low	Percentage	14.0%	13.2%	12.5%	-	Rolling Year	↑		13%+	13%<	10.8%<	12.0%	13.0%	11.9%	13.4%	12.7%	10.6%	8.0%	10.0%	8.9%
8.3	% of LAC in a family based setting (Council Plan Indicator)	High	Percentage	82.8%	82.2%	81.5%	-	As at mth end	↓				85%>	-	-	81.1%	81.0%	82.2%				
8.4	% of LAC placed with parents or other with parental responsibility (P1)	Low	Percentage	8.2%	6.9%	6.5%	-	As at mth end	↑					-	-	5.3%	4.3%	6.9%				
8.5	% of LAC in a Commissioned Placement	Low	Percentage	51.2%	52.3%	53.6%	-	As at mth end	↓					-	43.6%	43.2%	50.5%	52.3%				

*'DOT' - Direction of travel represents the direction of 'performance' since the previous month with reference to the polarity of 'good' performance for that measure. Colours have been added to help distinguish better and worse performance. Key Below:-

- ↑ - improvement in performance / increase in numbers
- - no movement - numbers stable with last month
- ↓ - decline in performance, not on target / decrease in numbers

NO.	INDICATOR	GOOD PERF IS	DATA NOTE (Monthly)	2018 / 19		2019 / 20		DOT (Month on Month)	RAG (in month)	Target and Tolerances			YR ON YR TREND					LATEST BENCHMARKING					
				Feb-20	Mar-20	Apr-19	YTD 2018/19			DATA NOTE	Red	Amber	Target Green	2014/15	2015/16	2016/17	2017/18	2018/19	STAT NEIGH AVE	BEST STAT NEIGH	NAT AVE	NAT TOP QTILE THRESHOL	
FOSTERING	9.1	Number of LAC in a Fostering Placement (excludes family/friend carers)	High	Count	436	427	414	-	As at mth end	↓				-	-	353	414	427					
	9.2	% of LAC in a Fostering Placement (excludes family/friend carers)	High	Percentage	67.5%	66.5%	66.0%	-	As at mth end	↓				-	-	72.3%	66.0%	66.4%					
	9.3	Number of Foster Carers (Households)	High	Count	149	149	150	-	As at mth end	↑				-	156	161	154	149					
	9.4	Number of Foster Carers Recruited	High	Count	1	1	4	4	Financial Year	↑				-	13	32	16	11					
	9.5	Number of Foster Carers Deregistered	Info	Count	1	1	2	2	Financial Year	↑				-	16	22	25	21					
ADOPTIONS	10.1	Number of adoptions	High	Count	3	0	1	1	Financial Year	↑				-	43	31	27	32					
	10.2	Number of adoptions completed within 12 months of SHOBPA	High	Count	1	0	0	0	Financial Year	→				-	23	12	16	11					
	10.3	% of adoptions completed within 12 months of SHOBPA	High	Percentage	33.3%	-	0.0%	0.0%	Financial Year	n/a	Red	<83%	83%>	85%+	37.0%	53.5%	38.7%	59.3%	34.4%				
	10.4	Average number of days between a child becoming Looked After and having a adoption placement (A1)	Low	YTD Average	385.3	386.9	372.8	-	Financial Year	↑	Green	511+	511<	487<	393.0	296.0	404.0	325.3	386.9	479.7	362.0	520.0	455.0
	10.5	Average number of days between a placement order and being matched with an adoptive family (A2)	Low	YTD Average	212.5	212.4	162.8	-	Financial Year	↑	Red	127+	127<	121<	169	136	232.9	124.8	212.4	205.6	89.0	220.0	171.8
CASELOAD S	11.4	Maximum caseload of social workers in LAC	Low	Average count	23	23	23	-	As at mth end	→	Red	21+	20<	18<	-	19.2	17.0	18.0	23.0				
	11.5	Average number of cases per qualified social worker in LAC Teams 1-3	Within Limits	Average count	19.2	19.4	18.8	-	As at mth end	↓	Green	1+ above range	1 above range	14-20	-	-	-	12.6	19.4				
		Average number of cases per qualified social worker in LAC Teams 4 - 5	Within Limits	Average count	16.5	15.3	14.4	-	As at mth end	↓	Green	1+ above range	1 above range	14-20	0	-	-	11.8	15.3				

LOOKED AFTER CHILDREN

DEFINITION Children in care or 'looked after children' are children who have become the responsibility of the local authority. This can happen voluntarily by parents struggling to cope or through an intervention by children's services because a child is at risk of significant harm.

PERFORMANCE ANALYSIS

April appeared to bring the first fruits of Right Child Right Care (phase 2) with 29 discharges from care achieved over the month and only 16 admissions giving a net reduction of 13 children in total and an overall number of 627 by the end of the month, the equal lowest figure for the previous year. These discharges from care meant that all of those planned were achieved within April suggesting some growing confidence within the Family Court regarding RMBC's permanence planning. As a result, 13 children have been discharged via permanence (SGO's) over the course of 2019 thus far which is not far short of half of the total figure achieved in 2018/19.

Whilst May looks like it may bring a further slight increase the trend continues to be a downward one with reductions achieved in 6 of the last 8 months and 27 discharges already planned for June. Further to that the average age of children admitted to care has reduced further to 6.3 years down from 7.8 last month and 8.2 the previous month.

Data Note: An issue has arisen within the Liquid Logic system which is impacting on the reporting LAC children. For some children who have left care and have had previous care episodes, the same 'end date' is copying into the previous episodes within the system. This has been reported, however, until this is rectified we will be unable to accurately report on measures regarding children ceasing care.

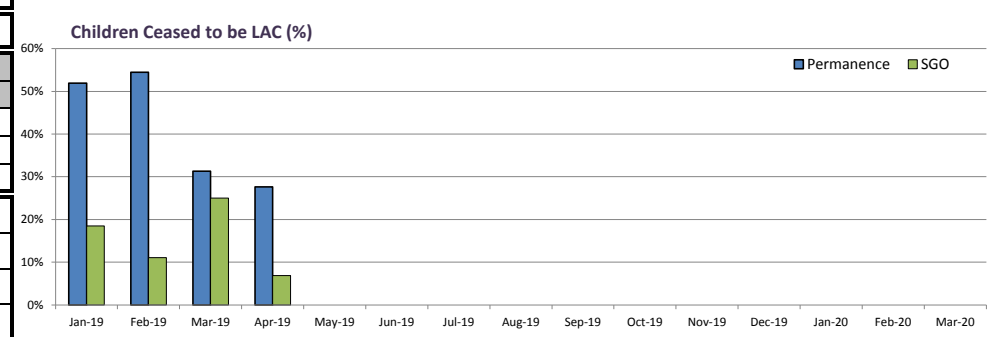
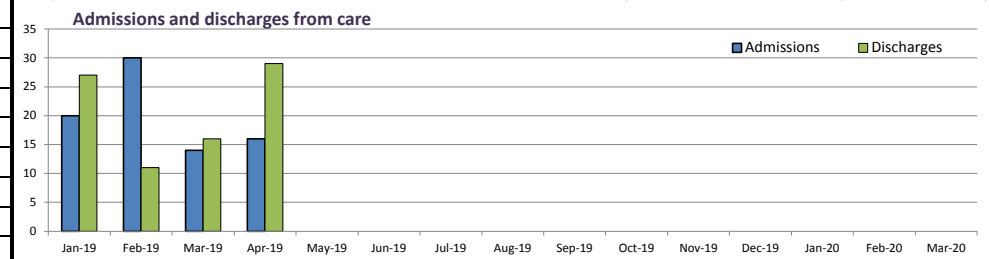
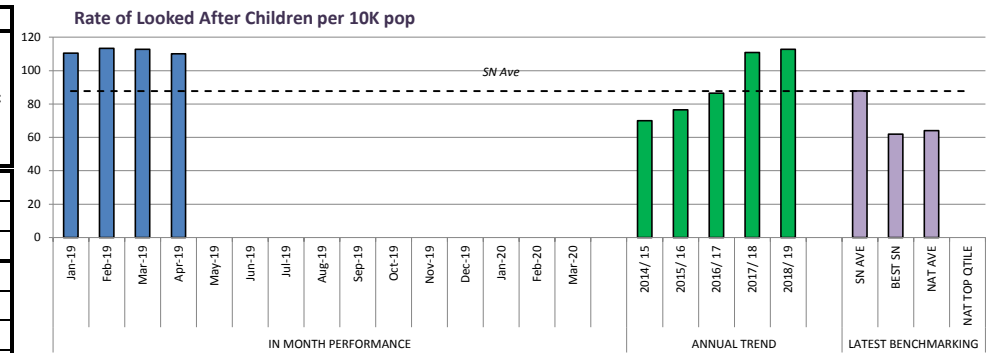
	6.2	6.1	6.3	6.4	6.5	6.6	6.7
	Rate of children looked after per 10K pop	Number of LAC	Admissions of children looked after (Episodes)	No. of children who have ceased to be LAC (Episodes)	% of children ceased to be LAC due to permanence	Number of SGO's started (Legal Status)	% of children ceased to be LAC due to an SGO

IN MONTH PERFORMANCE	Jan-19	110.5	629	20	27	51.9%	5	18.5%
	Feb-19	113.4	646	30	11	54.5%	2	11.1%
	Mar-19	112.7	642	14	16	31.3%	4	25.0%
	Apr-19	110.1	627	16	29	27.6%	2	6.9%
	May-19							
	Jun-19							
	Jul-19							
	Aug-19							
	Sep-19							
	Oct-19							
	Nov-19							
	Dec-19							
	Jan-20							
	Feb-20							
Mar-20								

YTD	2019/20	-	-	16	29	27.6%	2	6.9%
-----	---------	---	---	----	----	-------	---	------

ANNUAL TREND	2014/ 15	70.0	407	175	160	37.5%	-	-
	2015/ 16	76.6	432	208	192	40.1%	-	-
	2016/ 17	86.6	488	262	215	27.9%	-	9.8%
	2017/ 18	110.8	627	330	194	27.3%	67	8.2%
	2018/ 19	112.7	642	271	249	31.7%	33	13.3%

LATEST BENCHMARKING	SN AVE	87.8						12.3% (2017)
	BEST SN	62.0						22.0% (2017)
	NAT AVE	64.0						12.0% (2017)
	NAT TOP QTILE	-						17.0% (2017)



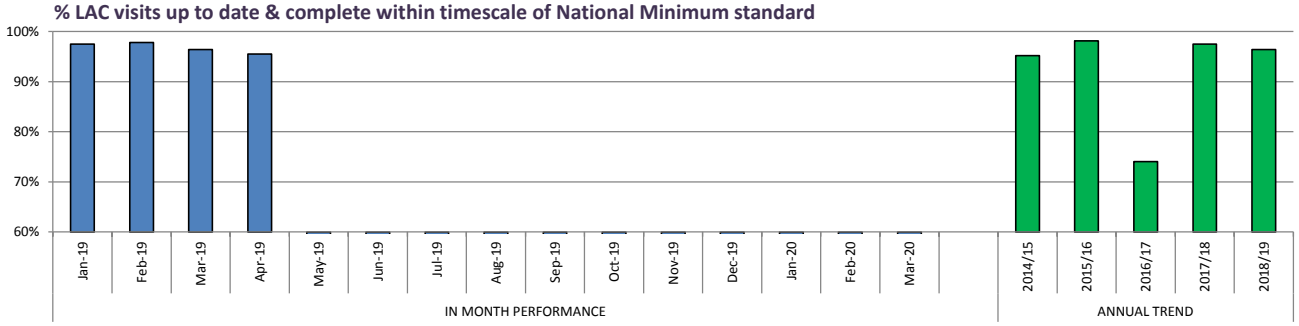
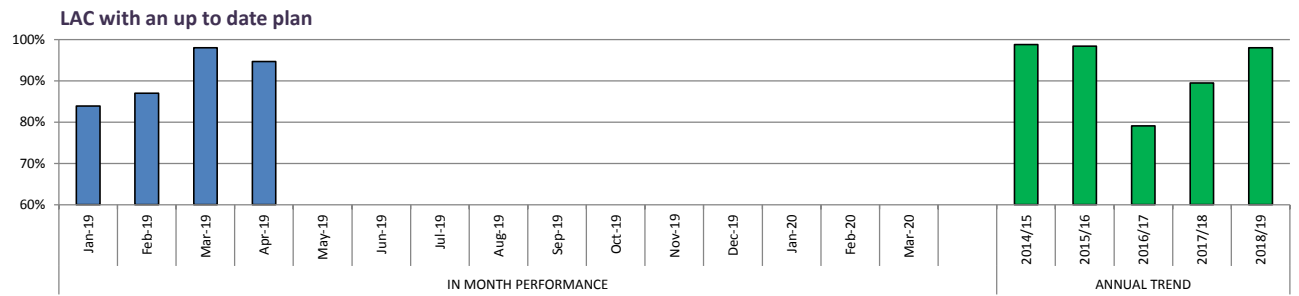
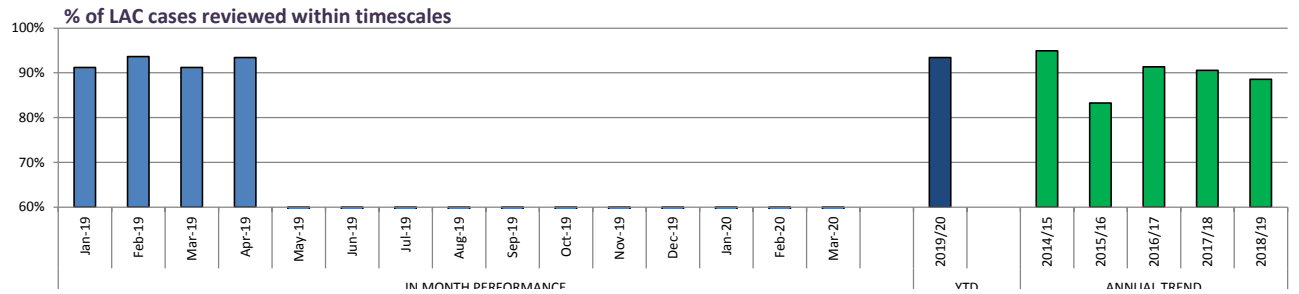
LOOKED AFTER CHILDREN - REVIEWS, PLANS & VISITS

DEFINITION The purpose of LAC review meeting is to consider the plan for the welfare of the looked after child and achieve Permanence for them within a timescale that meets their needs. The review is chaired by an Independent Reviewing Officer (IRO)
 The LA is also responsible for appointing a representative to visit the child wherever he or she is living to ensure that his/her welfare continues to be safeguarded and promoted. The minimum national timescales for visits is within one week of placement, then six weekly until the child has been in placement for a year and the 12 weekly thereafter. Rotherham have set a higher standard of within first week then four weekly thereafter until the child has been permanently matched to the placement.

PERFORMANCE ANALYSIS
 There has been a slight increase in performance regarding Statutory Reviews which has arrested a declining performance. Senior managers in the Independent Reviewing Officer (IRO) and LAC Service will be meeting before the end of the month to undertake a more detailed audit in order to provide a greater understanding as to why this has been one of the consistently weaker aspects of performance within the LAC Service.
 Whilst performance in respect of Statutory Visits and Care Plans has dipped slightly they are both still in the mid-90s and are therefore not yet an area of significant concern. Despite the relatively good performance for Care Plans there is still work to do in getting social workers to translate this detailed knowledge of their children into similarly detailed Care Plans and this is going to be an area of focus in June's LAC Service Development Day.

	6.8	6.20	6.21
% of LAC cases reviewed within timescales			
LAC with an up to date plan			
% LAC visits up to date & complete within timescale of National Minimum standard			

IN MONTH PERFORMANCE	6.8		6.20		6.21	
	Jan-19	Feb-19	Mar-19	Apr-19	May-19	Jun-19
Jan-19	124 of 136	91.2%	83.9%	614 of 630	97.5%	
Feb-19	148 of 158	93.7%	87.0%	633 of 647	97.8%	
Mar-19	135 of 148	91.2%	98.0%	619 of 642	96.4%	
Apr-19	114 of 122	93.4%	94.7%	599 of 627	95.5%	
May-19						
Jun-19						
Jul-19						
Aug-19						
Sep-19						
Oct-19						
Nov-19						
Dec-19						
Jan-20						
Feb-20						
Mar-20						
YTD	2019/20	114 of 122	93.4%	-	-	-
ANNUAL TREND	2014/15		94.9%	98.8%		95.2%
	2015/16		83.3%	98.4%		98.1%
	2016/17	652 of 714	91.3%	79.1%		74.0%
	2017/18	1502 of 1658	90.6%	89.5%		97.5%
	2018/19	1660 of 1875	88.5%	98.0%		96.4%



LOOKED AFTER CHILDREN - HEALTH

DEFINITION Local authorities have a duty to safeguard and to promote the welfare of the children they look after, therefore the local authority should make arrangements to ensure that every child who is looked after has his/her health needs fully assessed and a health plan clearly set out.

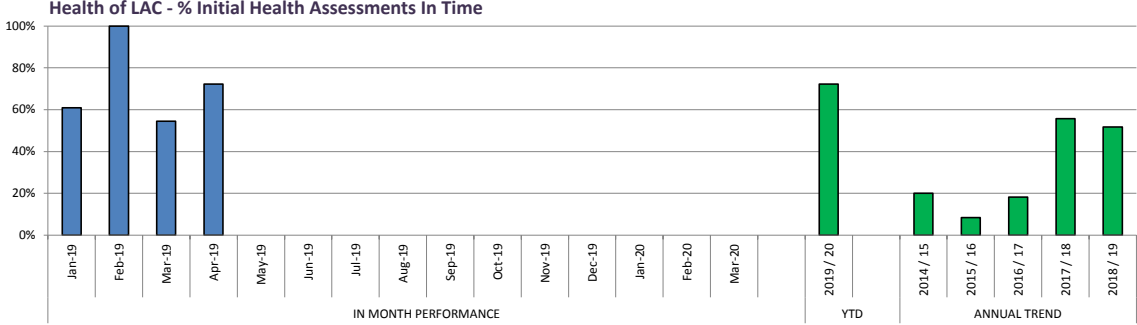
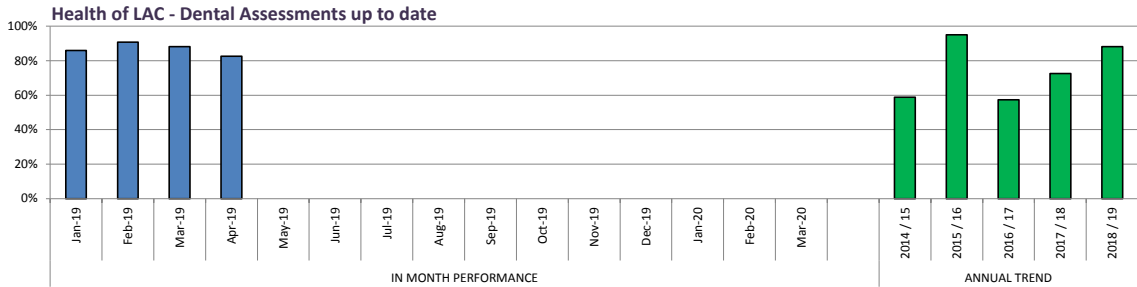
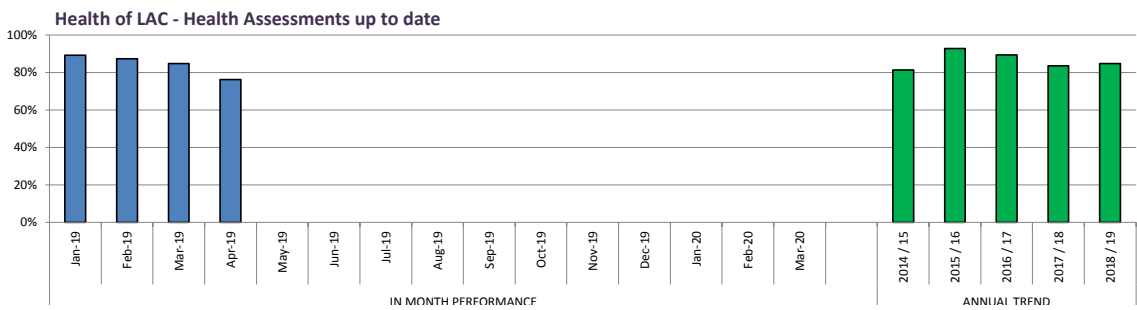
PERFORMANCE ANALYSIS

Review Health Needs Assessment (HNA) performance has declined further, but it does seem that there is a systems issue coming into play in that reports for Review HNAs for children placed out of the RMBC area seem to take longer to be returned to the social worker and therefore the inputting of these onto the system is delayed e.g. in May it appeared that within LAC 1; 23 assessments had not taken place when in fact all bar 3 children had had their HNA but the report had not yet been sent to the social worker. There needs to be further analysis undertaken to understand if this is replicated across the service and to identify possible solutions.

In April there were 5 of the 18 Initial Health Assessments (IHA) that took place outside of the 20 working day timescale due to a number reasons. If the current performance is maintained throughout the year we will report the best IHA performance for the previous 5 years by more than 20%.

Dental checks have declined slightly but as usual there is an anticipated 5% increase when the report is re-run mid-month.

		6.10	6.11	6.12		
		Health of LAC - Health Assessments up to date	Health of LAC - Dental Assessments up to date	Health of LAC - No. Initial Health Assessments In Time	Health of LAC - % Initial Health Assessments In Time	
IN MONTH PERFORMANCE	Jan-19	89.3%	86.0%	14 of 23	60.9%	
	Feb-19	87.4%	90.7%	14 of 14	100.0%	
	Mar-19	84.8%	88.2%	12 of 22	54.5%	
	Apr-19	76.3%	82.6%	13 of 18	72.2%	
	May-19					
	Jun-19					
	Jul-19					
	Aug-19					
	Sep-19					
	Oct-19					
	Nov-19					
	Dec-19					
	Jan-20					
	Feb-20					
	Mar-20					
	YTD	2019 / 20	-	-	13 of 18	72.2%
	ANNUAL TREND	2014 / 15	81.4%	58.8%		20.0%
2015 / 16		92.8%	95.0%		8.4%	
2016 / 17		89.5%	57.3%		18.2%	
2017 / 18		83.7%	72.5%	132 of 237	55.7%	
2018 / 19		84.8%	88.2%	135 of 261	51.7%	
LATEST BENCHMARKING	SN AVE					
	BEST SN					
	NAT AVE					
	NAT TOP QTILE					



LOOKED AFTER CHILDREN - PERSONAL EDUCATION PLANS

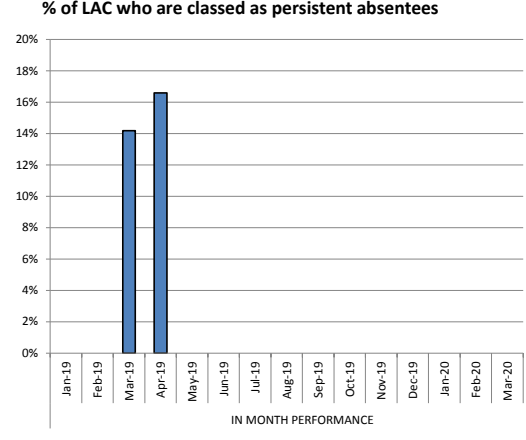
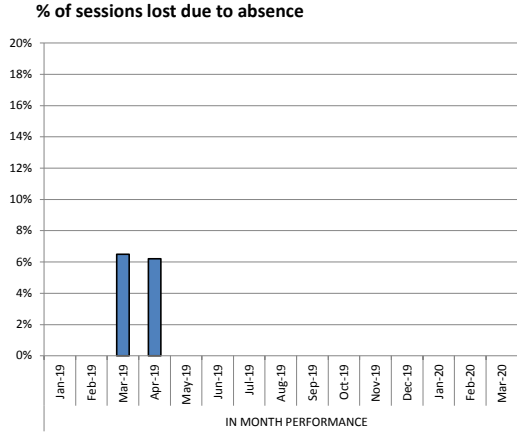
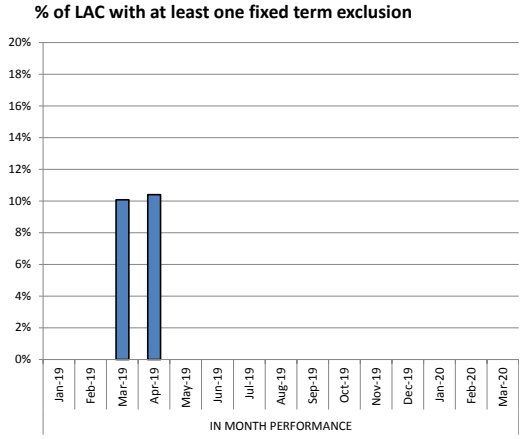
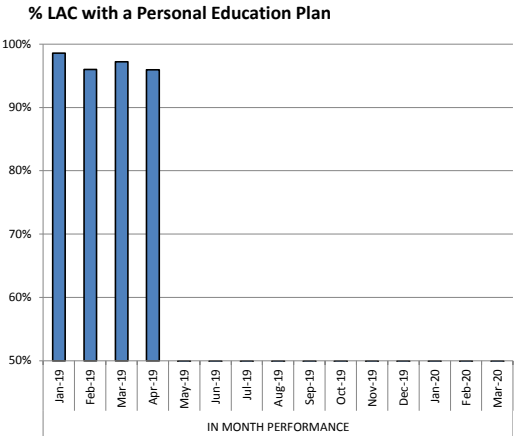
DEFINITION A personal education plan (PEP) is a school based meeting to plan for the education of a child in care. The government have made PEPs a statutory requirement for children in care to help track and promote their achievements. Prior to September 2015 PEPs were in place for compulsory school-age children only. PEPs are now in place for LAC aged two to their 18th birthday.

PERFORMANCE ANALYSIS

At the end of the Spring term Personal Education Plan (PEP) performance for LAC with a PEP reached 97.25% and PEPs up to date 96.7%, continuing the high performance of previous months and the Virtual School deserve a great deal of credit for this given the relative size of their team.

The expanded educational performance report has now been completed with measures in absence rates, exclusions and less than 25 hour entitlements now included. It is planned that the Virtual School Governing Body will discuss and agree performance targets at its next meeting.

		6.13		6.14	NEW	NEW	NEW	NEW	NEW
		% LAC with a Personal Education Plan	% LAC with up to date Personal Education Plan (Termly)	LAC Overall absence - % of sessions lost due to absence (LAC continuous for at least 12 months)	% of LAC who are classed as persistent absentees (missing 10%+ sessions)	% of LAC with at least one fixed term exclusion (LAC continuous for at least 12 months – School Census)	% of LAC receiving less than the 25 hour statutory entitlement	% of LAC on reduced timetable arrangements	
IN MONTH PERFORMANCE	Jan-19	483 of 490	98.6%	96.7% Spring Term 2019	-	-	-	-	-
	Feb-19	482 of 502	96.0%		-	-	-	-	-
	Mar-19	487 of 501	97.2%		6.5%	14.2%	10.1%	-	-
	Apr-19	471 of 491	95.9%	Summer Term 2019	6.2%	16.6%	10.4%	3.5%	3.7%
	May-19								
	Jun-19								
	Jul-19								
	Aug-19			Autumn Term 2019					
	Sep-19								
	Oct-19								
	Nov-19								
	Dec-19								
	Jan-20			Spring Term 2020					
Feb-20									
Mar-20									
YTD	2019/20	-	-	-	-	-	-	-	-
ANNUAL TREND	2014/15		76.0%	-	5.0%	11.7%	11.8%	-	-
	2015/16		97.8%	-	4.1%	12.2%	13.1%	-	-
	2016/17		97.0%	98.9%	5.7%	13.3%	15.5%	-	-
	2017/18		93.6%	97.4%	4.7%	11.7%	TBC	-	-
	2018/19		96.2%	Aug 19	Aug 19	Aug 19	Aug 19	-	-
LATEST BENCHMARKING	SN AVE		-	-	4.7%	10.0%	13.7%	-	-
	BEST SN		-	-	3.5%	7.1%	9.0%	-	-
	NAT AVE		-	-	4.5%	10.6%	11.8%	-	-
	NAT TOP QTILE		-	-	3.8%	8.8%	9.6%	-	-



CARE LEAVERS

DEFINITION A care leaver is defined as a person aged 25 or under, who has been looked after away from home by a local authority for at least 13 weeks since the age of 14; and who was looked after away from home by the local authority at school-leaving age or after that date. Suitable accommodation is defined as any that is not prison or bed and breakfast.

PERFORMANCE ANALYSIS

The number of Care Leavers supported by the Leaving Care Team currently stands at the highest ever (303), an increase of 45 from this time last year which is the equivalent of 2 Personal Adviser caseloads which have had to be assimilated within the team. As a result some of the team's performance has dipped slightly with up to date Pathway Plans reducing from 80% to 77% since the previous month.

Performance in respect of care leavers who are in suitable accommodation has also dipped very slightly but is still well above the national average. Whilst also still above the national average performance in respect of care leavers who are in Employment, Education or Training (EET) has dropped more significantly and this warrants a deeper examination.

Data Note: Following data validation in December 18, it was found that a number of cases were not being counted correctly within the Leaving Care cohort. This has now been rectified in Liquid Logic which has caused the cohort number to increase.

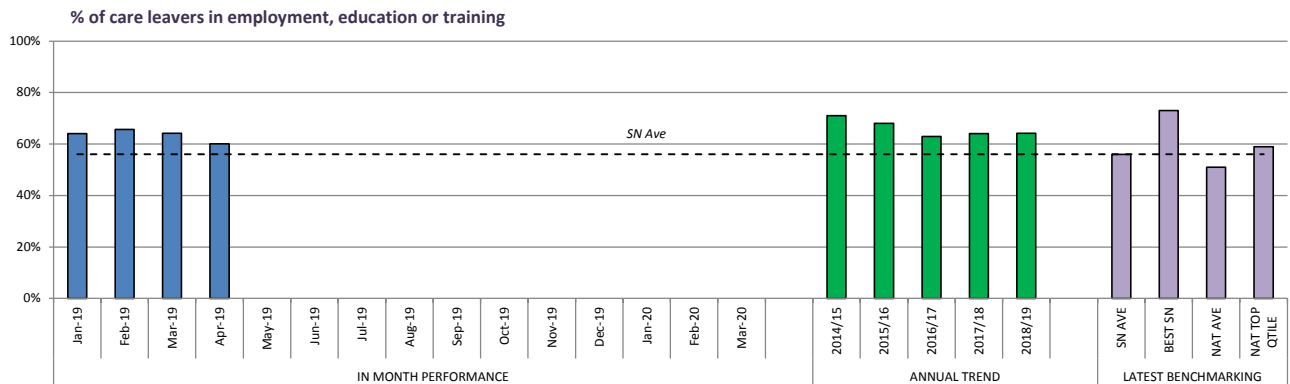
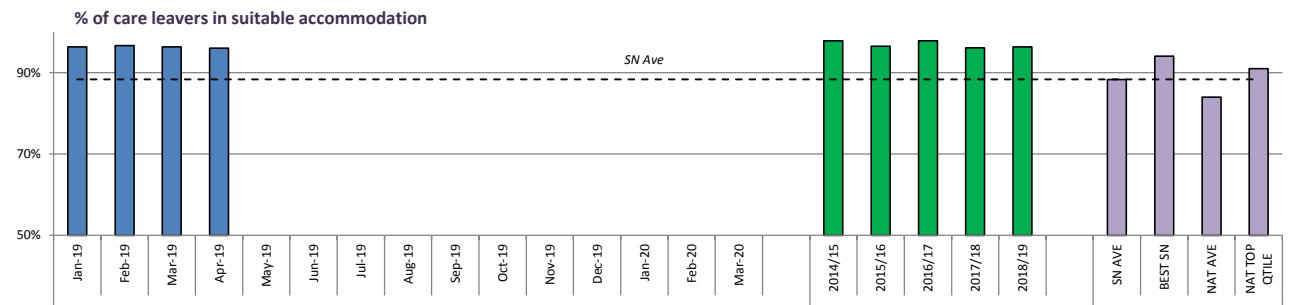
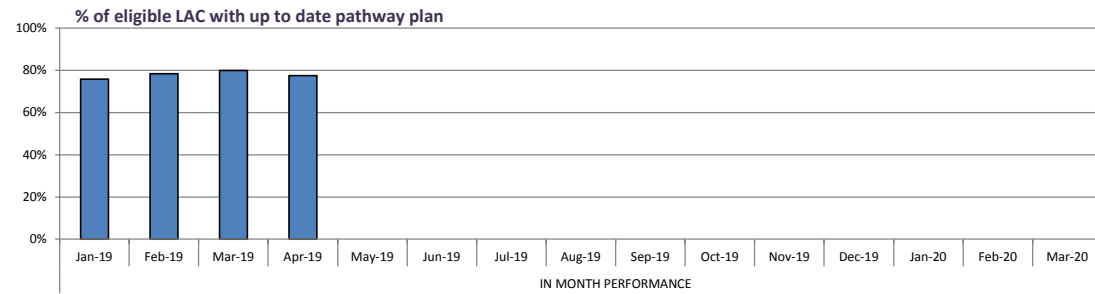
	7.1	7.2	7.3	7.4	7.5
Number of care leavers					
% of eligible Care Leavers with a pathway plan					
% of eligible Care Leavers with up to date pathway plan					
% of care leavers in suitable accommodation					
% of care leavers in employment, education or training					

IN MONTH PERFORMANCE	Jan-19	298	84.4%	75.9%	96.3%	64.1%
	Feb-19	297	85.3%	78.5%	96.6%	65.7%
	Mar-19	299	85.4%	80.0%	96.3%	64.2%
	Apr-19	303	85.3%	77.6%	96.0%	60.1%
	May-19					
	Jun-19					
	Jul-19					
	Aug-19					
	Sep-19					
	Oct-19					
	Nov-19					
	Dec-19					
	Jan-20					
	Feb-20					
	Mar-20					

YTD	2019/20	-	-	-	-	-
-----	---------	---	---	---	---	---

ANNUAL TREND	2014/15	183	-	-	97.8%	71.0%
	2015/16	197	69.8%	-	96.5%	68.0%
	2016/17	223	99.3%	-	97.8%	62.9%
	2017/18	256	93.9%	70.3%	96.1%	64.1%
	2018/19	299	85.4%	80.0%	96.3%	64.2%

LATEST BENCHMARKING	SN AVE				88.3%	56.0%
	BEST SN				94.0%	73.0%
	NAT AVE				84.0%	51.0%
	NAT TOP QTILE				91.0%	59.0%



LOOKED AFTER CHILDREN - PLACEMENTS

DEFINITION

A LAC placement is where a child has become the responsibility of the local authority (LAC) and is placed with foster carers, in residential homes or with parents or other relatives.

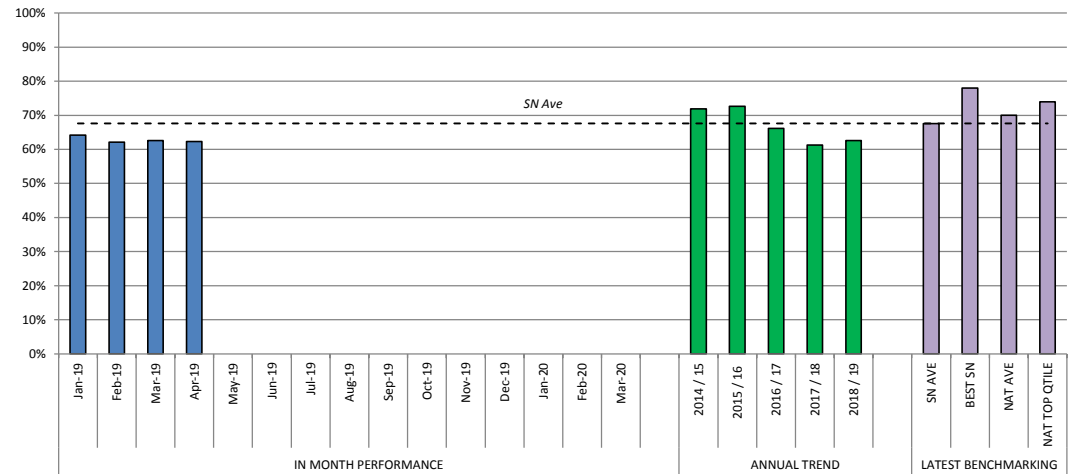
PERFORMANCE ANALYSIS

Long-term placement stability has remained very consistent despite the increasing number of LAC who are discharged from care via an SGO, as has the number of children in family based settings, although the actual number of children has increased to 99 - the highest of the year so far. More re-assuring the number of children experiencing 3 or more placement moves has reduced to 12.5%, the lowest of the year thus far with the actual number of children affected reducing from 91 to 78.

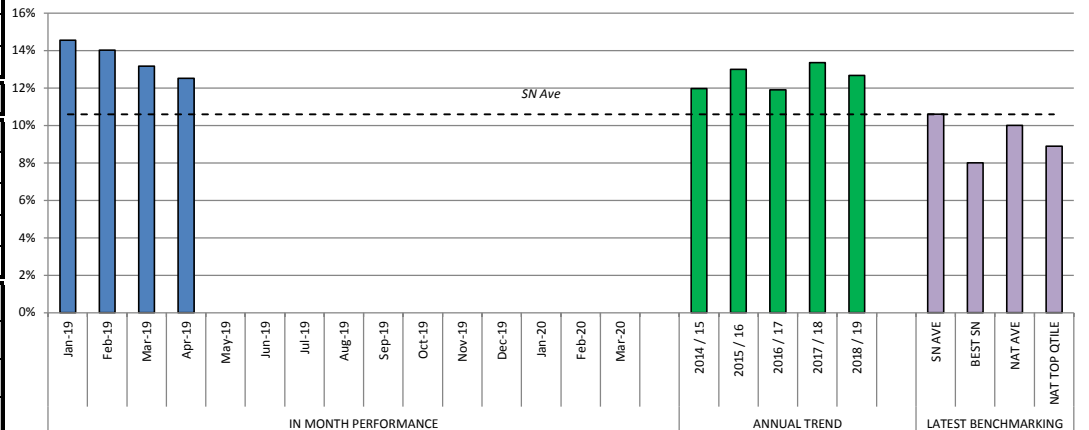
The percentage of children placed in a commissioned placement has increased slightly by 1.3% but the actual numbers of children involved has remained the same. As a result the % of LAC in family based settings has decreased slightly by 0.7%

	8.1		8.2		8.3		8.4		8.5	
	Long term LAC placements stable for at least 2 years		LAC who have had 3 or more placements - rolling 12 mth		% of LAC in a family Based setting (includes living with parents)		% of LAC placed with parents or other with parental responsibility (P1)		LAC in a Commissioned Placement (Fostering & Residential)	
IN MONTH PERFORMANCE	Jan-19	93 of 145	64.1%	91 of 625	14.6%	82.5%	7.8%	339 of 629	53.9%	
	Feb-19	92 of 148	62.2%	90 of 642	14.0%	82.8%	8.2%	331 of 646	51.2%	
	Mar-19	92 of 147	62.6%	84 of 638	13.2%	82.2%	6.9%	336 of 642	52.3%	
	Apr-19	99 of 159	62.3%	78 of 623	12.5%	81.5%	6.5%	336 of 627	53.6%	
	May-19									
	Jun-19									
	Jul-19									
	Aug-19									
	Sep-19									
	Oct-19									
	Nov-19									
	Dec-19									
	Jan-20									
Feb-20										
Mar-20										
YTD	2019 / 20		-		-		-		-	
ANNUAL TREND	2014 / 15	110 of 153	71.9%	49 of 409	12.0%	-	-	-	-	
	2015 / 16	109 of 150	72.7%	56 of 431	13.0%	-	-	188 of 431	43.6%	
	2016 / 17	96 of 145	66.2%	58 of 488	11.9%	81.1%	5.3%	211 of 488	43.2%	
	2017 / 18	90 of 147	61.2%	83 of 621	13.4%	81.0%	4.3%	315 of 624	50.5%	
	2018 / 19	92 of 147	62.6%	81 of 639	12.7%	82.2%	6.9%	336 of 643	52.3%	
LATEST BENCHMARKING	SN AVE		67.6%		10.6%					
	BEST SN		78.0%		8.0%					
	NAT AVE		70.0%		10.0%					
	NAT TOP QTILE		74.0%		8.9%					

% long term LAC placements stable for at least 2 years



% LAC who have had 3 or more placements - rolling 12 months



FOSTERING

DEFINITION

A foster care family provide the best form of care for most Looked after children. Rotherham would like most of its children to be looked after by its own carers so that they remain part of their families and community .

PERFORMANCE ANALYSIS

There are 7 active assessments currently on-going with 2 more on hold, and 3 IFA carers considering a potential move to RMBC. Overall there are 14 approvals already projected for 2019/20 and the Foster Carer Diversity Scheme has thus far led to 4 new foster families being allocated for assessment and another 3 viability visits looking positive for progression to the full assessment.

The Fostering Team are reporting 17 approvals providing 24 new placements for 2018/19 which has flagged a recording issue explaining the difference from that contained in this report. Further work is currently being undertaken in order to rectify this discrepancy. However, this is still a net loss given there were 21 de-registrations/resignations over the same period.

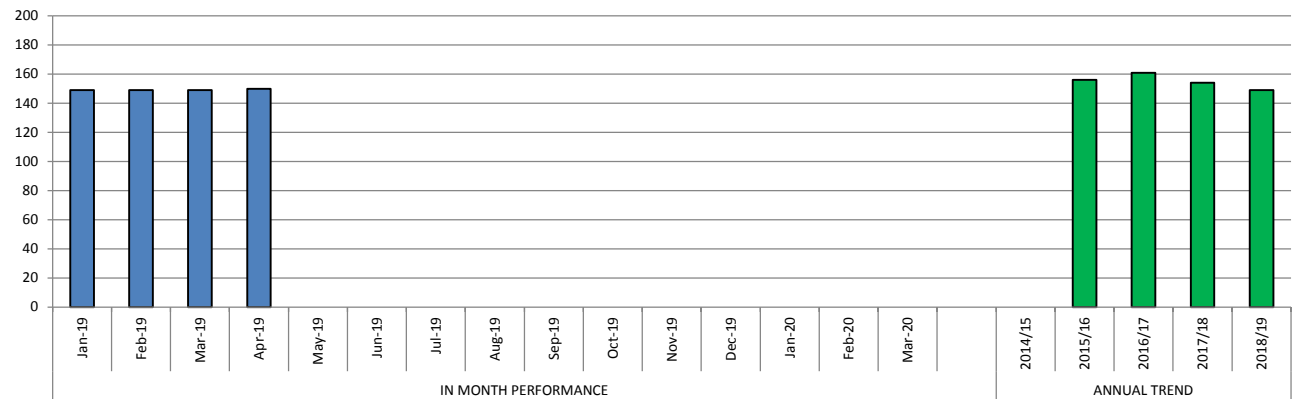
	9.1	9.2	9.3	9.4	9.5
	Number of LAC in a Fostering Placement (excludes relative/friend)	% of total LAC in a Fostering Placement (excludes relative/friend)	Number of Foster Carers (Households)	Number of Foster Carers Recruited (Households)	Number of Foster Carers De-registered (Households)

IN MONTH PERFORMANCE	Jan-19	428	68.0%	149	0	2
	Feb-19	436	67.5%	149	1	1
	Mar-19	427	66.5%	149	1	1
	Apr-19	414	66.0%	150	4	2
	May-19					
	Jun-19					
	Jul-19					
	Aug-19					
	Sep-19					
	Oct-19					
	Nov-19					
	Dec-19					
	Jan-20					
	Feb-20					
Mar-20						

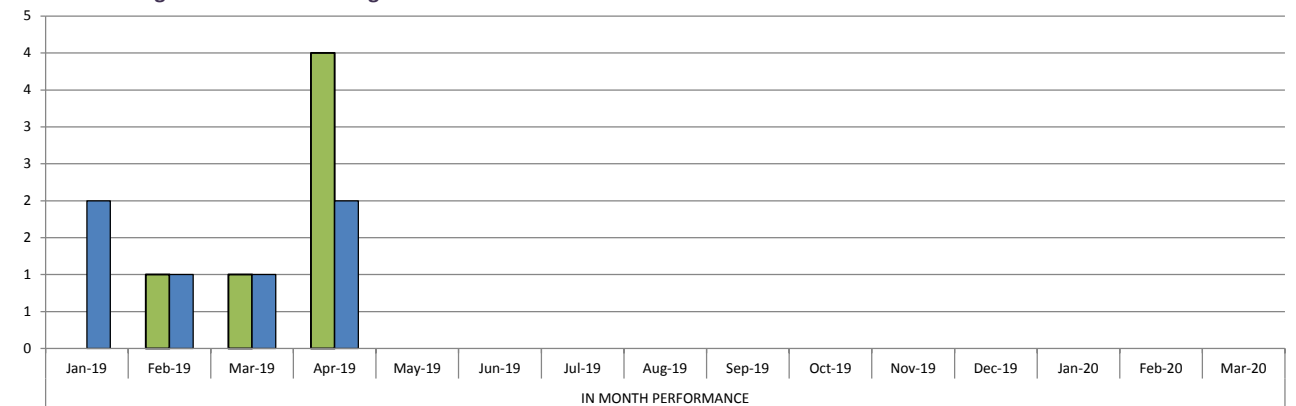
YTD	2019/20	-	-	-	4	2
-----	---------	---	---	---	---	---

ANNUAL TREND	2014/15	-	-	-	-	-
	2015/16	-	-	156	13	16
	2016/17	353	72.3%	161	32	22
	2017/18	414	66.0%	154	16	25

Number of Foster Carers



Fostering Recruitment & De-registrations



ADOPTIONS

DEFINITION

Following a child becoming a LAC, it may be deemed suitable for a child to become adopted which is a legal process of becoming a non-biological parent. The date it is agreed that it is in the best interests of the child that they should be placed for adoption is known as their 'SHOBPA'. Following this a family finding process is undertaken to find a suitable match for the child based on the child's needs, they will then be matched with an adopter(s) followed by placement with their adopter(s). This adoption placement is monitored for a minimum of 10 weeks and assessed as stable and secure before the final adoption order is granted by court decision and the adoption order is made. Targets for measures A1 and A2 are set centrally by government office.

PERFORMANCE ANALYSIS

A total of 32 children were adopted over the course of 2018/19 which is an improvement on the 27 achieved last year. Given there was only one adoption completed in April there was only minimal impact on the A1 and A2 scorecard although both of these were positive and this brings RMBC into the top quartile for both measures.

Only 11 of the 32 adoptions were completed within 12 months of the SHOBPA decision but this is primarily because RMBC does not implement time limited searches but will continue to seek adoptive placements to secure the best form of permanence for our children and 72% (23 children) of the children adopted in 2018/19 were in the 'hard to place' categories.

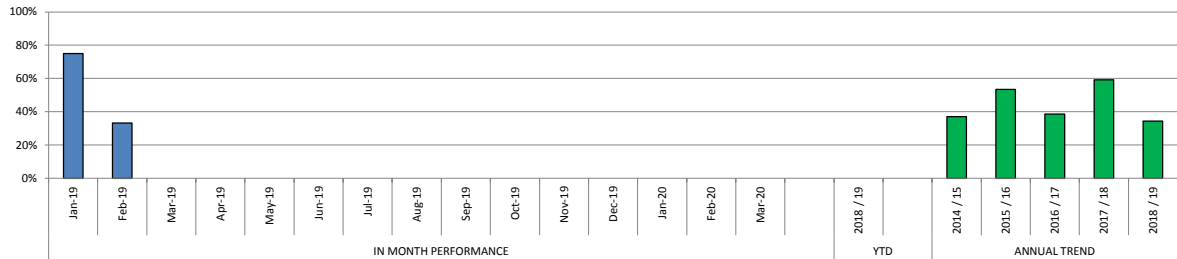
In addition there are 36 children currently placed in their adoptive placement and 22 adopters were approved over the course of the year with 14 more at stage 1 and 3 in stage 2 - this is a significant improvement on the 14 adopters approved in 2017/18.

Data Note: Taken from manual tracker. Data requires inputting into LCS

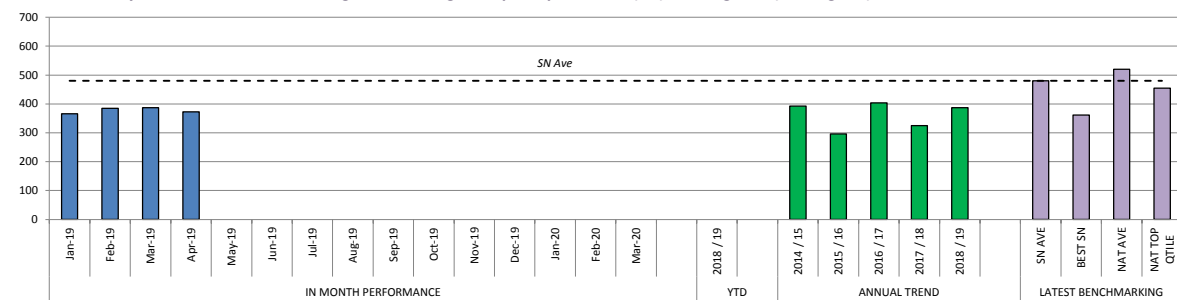
	10.1	10.2	10.3	10.4	10.5
Number of adoptions		Number of adoptions completed within 12 months of SHOBPA	% adoptions completed within 12 months of SHOBPA	Av. No. days between a child becoming LAC & having a adoption placement (A1) (ytd. ave)	Av. No. days between placement order & being matched with adoptive family (A2) (ytd. ave)

IN MONTH PERFORMANCE	Jan-19	4	3	75.0%	365.5	197.8
	Feb-19	3	1	33.3%	385.3	212.5
	Mar-19	0	0	-	386.9	212.4
	Apr-19	1	0	0.0%	372.8	162.8
	May-19					
	Jun-19					
	Jul-19					
	Aug-19					
	Sep-19					
	Oct-19					
	Nov-19					
	Dec-19					
	Jan-20					
Feb-20						
Mar-20						
YTD	2018 / 19	1	0	0.0%	-	-
ANNUAL TREND	2014 / 15	-	-	37.0%	393.0	169.0
	2015 / 16	43	23	53.5%	296.0	136.0
	2016 / 17	31	12	38.7%	404.0	232.9
	2017 / 18	27	16	59.3%	325.3	124.8
	2018 / 19	32	11	34.4%	386.9	212.4
LATEST BENCHMARKING	SN AVE				479.7	205.6
	BEST SN				362.0	89.0
	NAT AVE				520.0	220.0
	NAT TOP QTILE				455.0	171.8

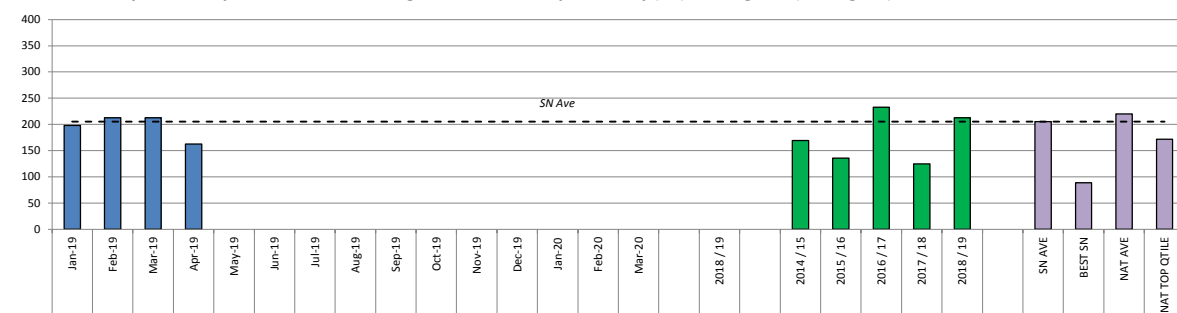
% adoptions completed within 12 months of SHOBPA



Av. No. days between a child becoming LAC & having a adoption placement (A1) - Rolling Year (low is good)



Av. No. days between placement order & being matched with adoptive family (A2) - Rolling Year (low is good)



*Annual Trend relates to current reporting year April to Mar - not rolling year

**adoptions have a 28 day appeal period so any children adopted in the last 28 days are still subject to appeal

CASELOADS

DEFINITION Caseload figures relate to the number of children the social worker is currently the lead key worker. Fieldwork teams relate to frontline social care services including the four Duty Teams, none Long Term CIN Teams, two LAC teams and the CSE Team. All averages are calculated on a full time equivalency basis, based on the number of hours the worker is contracted to work.

PERFORMANCE ANALYSIS LAC average caseloads have reduced for the first time in many months from 19.4 to 18.8 in the long-term teams and from 15.3 to 14.4 in the Court and Permanence Teams, largely as a direct consequence of the success of the Demand Management Strategy. However, workloads still remain high due to the continuing demands of supervising contact and out of authority visits. This will need to be kept under close review especially in the Court and Permanence Teams given a number of social workers in the teams have successfully obtained promotions/alternative positions and the fact that it has proven to be a challenge to recruit to these posts in the recent past.

Data Note: Please note that for February 19 onwards an adjustment has been made to the Insight reports for when calculating average caseloads. The report now makes an adjustment on FTE for Advanced Practitioners and Newly Qualified Social Workers as follows: AP's: 0.4 of their contracted FTE and NQSW's: 0.6 of their contracted FTE. This may have caused some noticeable increases in average caseloads from February 19 onwards.

		11.3	11.4	
		Maximum caseload of social workers in LAC Teams	Av. no. cases in LAC Teams	
			Teams 1-3	Teams 4 & 5
IN MONTH PERFORMANCE	Jan-19	23	16.0	15.0
	Feb-19	23	19.2	16.5
	Mar-19	23	19.4	15.3
	Apr-19	23	18.8	14.4
	May-19			
	Jun-19			
	Jul-19			
	Aug-19			
	Sep-19			
	Oct-19			
	Nov-19			
	Dec-19			
	Jan-20			
Feb-20				
Mar-20				
YTD	2019/20	-	-	-
ANNUAL TREND	2014/15	-	-	-
	2015/16	19	-	-
	2016/17	17	-	-
	2017/18	18	12.6	11.8
	2018/19	23	19.4	15.3

