

Children Missing from Home/Care Monthly Performance Report

Reporting Month: June 2019

Document Details

Status: Issue 1 (abridged version)

Date Created: 06/08/19

Created by: Performance & Quality Team

Contact: cyps-performance@rotherham.gov.uk

Missing Person Episodes 2018/19

Date sourced from Liquid Logic as at: 18/07/2019

REF NO.	INDICATOR	2019/20				Comments
		Apr-19	May-19	Jun-19	YTD	
1	All Episodes					There has been a slight decline in the numbers of children reported missing. This is, in part, due to the work being completed with placements that LAC children are being placed in around when to report children missing.
1.1	Number of Missing Episodes - all	129	130	116	375	
1.2	Involving; Number of individual children - all	57	68	53	104	
1.3	Number of children with 3 or more episodes in reporting period	9	9	10	20	
2	Looked After Children (by missing episodes)					There has been a decline in overall LAC children going missing. This is as a result of the communication with placements to ensure children reported missing are appropriate and that there are safety plans in place,
2.1	Number of Missing Episodes - LAC	75	87	74	236	
2.2	Involving; Number of individual children - LAC	20	33	28	40	
2.3	Number of children with 3 or more episodes in reporting period	7	7	7	14	
3	Child Sexual Exploitation (by missing episodes)					There has been an increase in the figure here. There have been new cases allocated to Evolve where "missing" is a key indicator. Work is being undertaken to reduce this.
3.1	Number of Missing Episodes - CSE risk is known to be medium/high	17	16	28	61	
3.2	Involving; Number of individual children - CSE risk is known to be medium/high	12	10	9	17	
3.3	Number of CSE Medium/High cases with 3 or more episodes in reporting period	1	1	3	4	
4	Number of days missing					The children who are missing more than two days are known. Need to know are completed by the social work team and appropriate strategy meetings are help. The missing advocates are being invited to more strategy meetings and this helps with a coordinated approach.
4.1	0 (same day return)	49 38%	61 47%	53 46%	163 43%	
4.2	1 day	59 46%	55 42%	53 46%	167 45%	
4.3	2 days	12 9%	5 4%	2 2%	19 5%	
4.4	3 days	4 3%	3 2%	2 2%	9 2%	
4.5	4 days	0 0%	3 2%	2 2%	5 1.3%	
4.6	5 days	0 0%	1 1%	0 0%	1 0.3%	
4.7	More than 5 days	5 4%	2 2%	4 3%	11 3%	
4.8	Still missing (as at the end of each month)	2 2%	0 0%	0 0%		

REF NO.	INDICATOR	Apr-19	May-19	Jun-19	YTD	Comments
5	Return Home Interviews					
5.1	Return Home Interview appropriate and offered <i>(not inc. No & N/A)</i>	98 84%	115 94%	85 77%	298 85%	There has been a combination of factors to the decline in these figures, There has been issues with the timeliness of some missing being put on in a timely manner and there has been one of the advocates requiring time off of work.
5.2	Return Home interview accepted (of those offered) <i>(not inc. N/A)</i>	93 95%	109 95%	71 84%	273 92%	
5.3a	Return Home interview completed in 3 working days (of those accepted)	65 70%	94 86%	49 69%	208 76%	
5.3b	Return Home interview not completed in 3 working days (of those accepted)	28 30%	14 13%	21 30%	63 23%	
6	Breakdown of social care status (by missing episodes)					
6.1	Early Help	5 4%	13 10%	9 8%	27 7%	There has been an increase in the number of "not a Client" being reported missing. This children are also screened by Mash and any referral following the return home interview identifying a need is made.
6.2	CIN	10 8%	11 8%	5 4%	26 7%	
6.3	CPP	11 9%	2 2%	5 4%	18 5%	
6.4	LAC	75 58%	87 67%	74 64%	236 63%	
6.5	Care Leaver	1 1%	0 0%	0 0%	1 0%	
6.6	Not a client	27 21%	17 13%	23 20%	67 18%	
6.7	Of those 'Not a Client', number of children who were 'Other Local Authority'	12 9%	6 5%	15 13%	33 9%	
7	Breakdown by Gender (by missing episodes)					
7.1	Female	51 40%	58 45%	63 54%	172 46%	Figures around males vs females continue to be similar, with this month there being more girls, but this may change in July. There is no significant change that needs to be considered.
7.2	Male	78 60%	72 55%	53 46%	203 54%	

REF NO.	INDICATOR	Apr-19	May-19	Jun-19	YTD	Comments	
8	Breakdown by Ethnicity (by missing episodes)						
8.1	A1 - White British	65 50%	73 56%	97 84%	235 63%	In relation to ethnicity there has been an increase in White British and a reduction in everything else.	
8.3	A3 - Any other White background	1 1%	1 1%	0 0%	2 1%		
8.5	A5 - Gypsy / Roma	24 19%	27 21%	4 3%	55 15%		
8.6	B1 - White and Black Caribbean	1 1%	0 0%	0 0%	1 0%		
8.7	B2 - White and Black African	0 0%	1 1%	0 0%	1 0%		
8.8	B3 - White and Asian	0 0%	1 1%	0 0%	1 0%		
8.9	B4 - Any other mixed background	12 9%	10 8%	1 1%	23 6%		
8.1	C2 - Pakistani	1 1%	4 3%	2 2%	7 2%		
8.11	C4 - Any other Asian background	1 1%	4 3%	0 0%	5 1%		
8.12	D2 - African	5 4%	0 0%	0 0%	5 1%		
8.14	E2 - Any other ethnic group	0 0%	1 1%	1 1%	2 1%		
8.15	E4 - Not obtained / recorded	19 15%	8 6%	11 9%	38 10%		
8.16	Total BME	45 35%	49 38%	8 7%	102 27%		
9	Breakdown by Age (by missing episodes)						
9.1	Under 10yrs	1 1%	1 1%	1 1%	3 1%		Most children continue to go missing from the age of 13 plus. The missing advocates are planning to do so sessions in existing youth groups to try to support these children.
9.2	10yrs	0 0%	0 0%	0 0%	0 0%		
9.3	11yrs	3 2%	2 2%	4 3%	9 2%		
9.4	12yrs	16 12%	22 17%	7 6%	45 12%		
9.5	13yrs	6 5%	11 8%	15 13%	32 9%		
9.6	14yrs	23 18%	27 21%	32 28%	82 22%		
9.7	15yrs	27 21%	25 19%	21 18%	73 19%		
9.8	16yrs	20 16%	18 14%	26 22%	64 17%		
9.9	17+yrs	33 26%	24 18%	10 9%	67 18%		

REF NO.	INDICATOR	Apr-19	May-19	Jun-19	YTD	Comments
10	LAC CYP - Placement distance (at time of episode) from home in miles					
10.1	10 miles or under	16 21%	20 23%	37 50%	73 31%	The missing advocates offer RHI (face to face) to all children within a 40 mile radius. To children placed further afield a RHI is offered in several ways, this can be by Skype (which is being accepted), by the allocated social worker if they have a visit planned or by a keyworker if this is requested by the child.
10.2	11-20 miles	28 37%	27 31%	17 23%	72 31%	
10.3	21-30 miles	1 1%	2 2%	3 4%	6 3%	
10.4	31-40 miles	24 32%	27 31%	2 3%	53 22%	
10.5	41-50 miles	0 0%	5 6%	6 8%	11 5%	
10.6	51-60 miles	0 0%	1 1%	0 0%	1 0%	
10.7	61-70 miles	3 4%	3 3%	1 1%	7 3%	
10.8	71-80 miles	1 1%	0 0%	2 3%	3 1%	
10.9	81-90 miles	0 0%	0 0%	1 1%	1 0%	
10.10	91-100 miles	0 0%	0 0%	0 0%	0 0%	
10.11	101+ miles	2 3%	2 2%	5 7%	9 4%	
10.12	Not recorded	0 0%	0 0%	0 0%	0 0%	

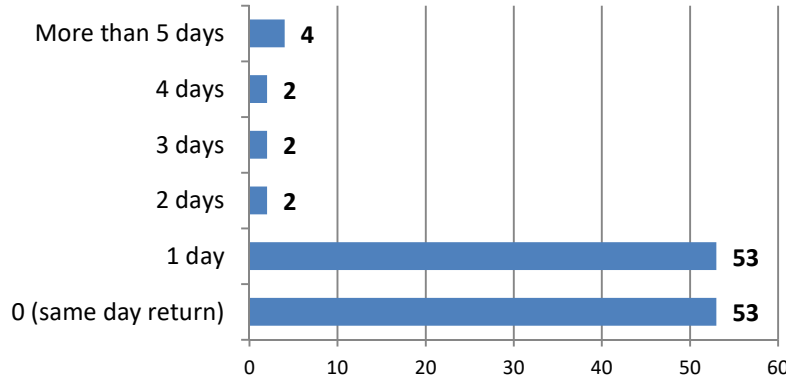
Missing Profile (in Month)

Reporting Month: June 2019

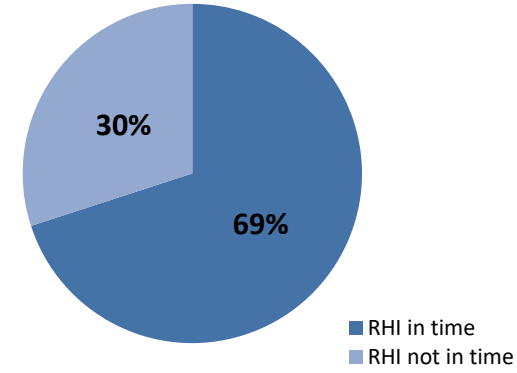
116 Episodes
of which
74 - LAC
28 - at CSE Risk

53 Children
of which
28 - LAC
9 - at CSE Risk

Number of Days Missing



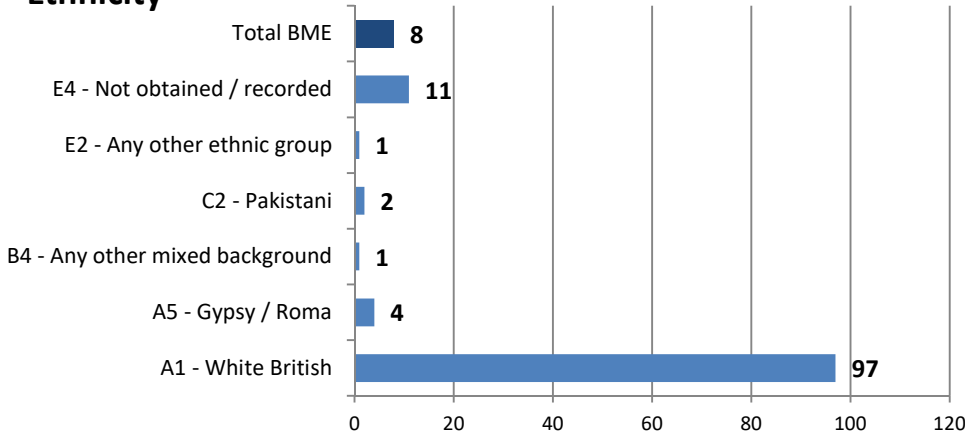
RHI's Completed in Time



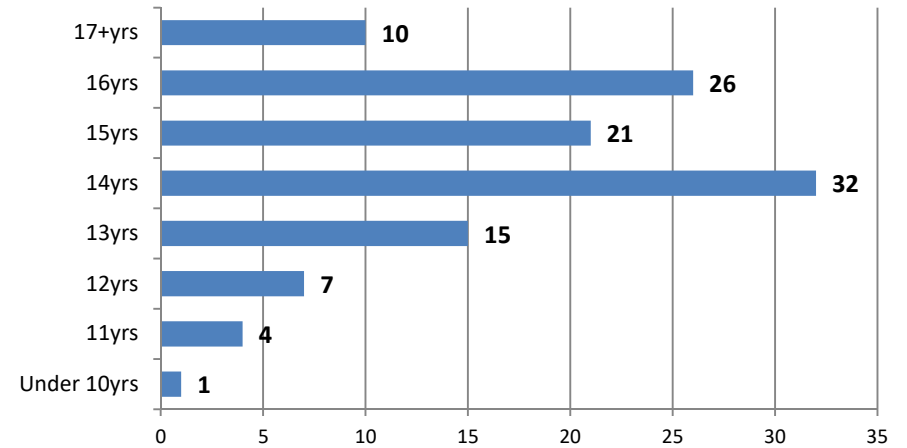
77%
of Children
offered a RHI

84%
of RHI's offered,
were accepted

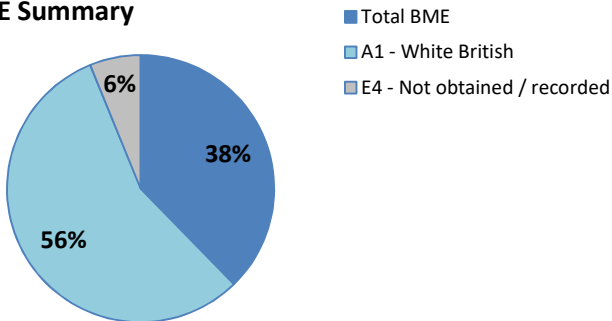
Ethnicity



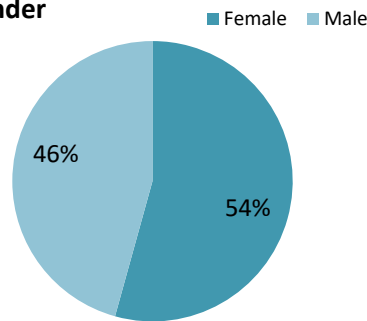
Age



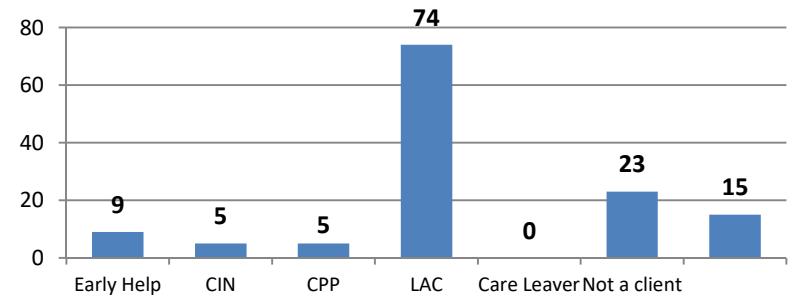
BME Summary



Gender

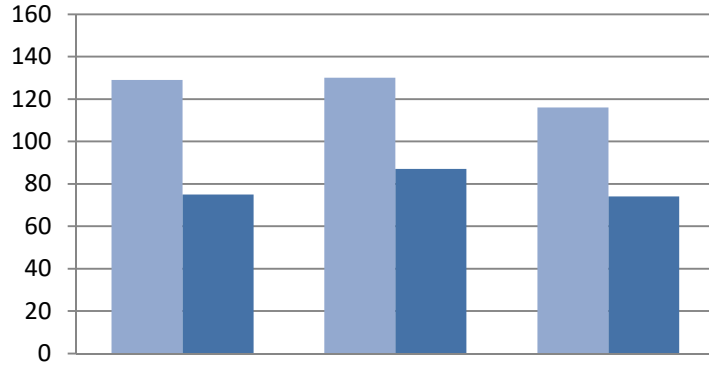


% By Case type



Missing Trends

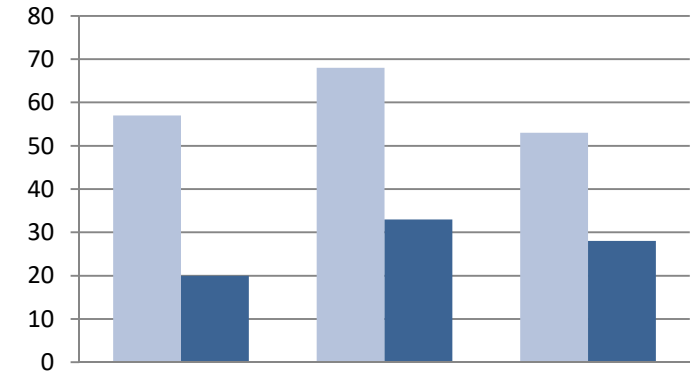
No. of Episodes



	Apr-19	May-19	Jun-19
No. Episodes (All)	129	130	116
No. Episodes (LAC)	75	87	74

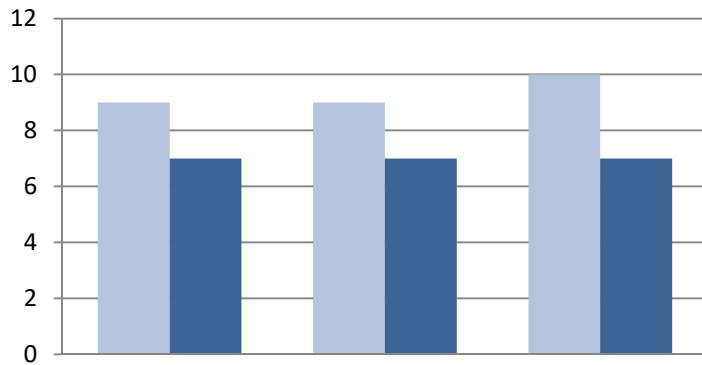
Reporting Month: June 2019

No. of Children



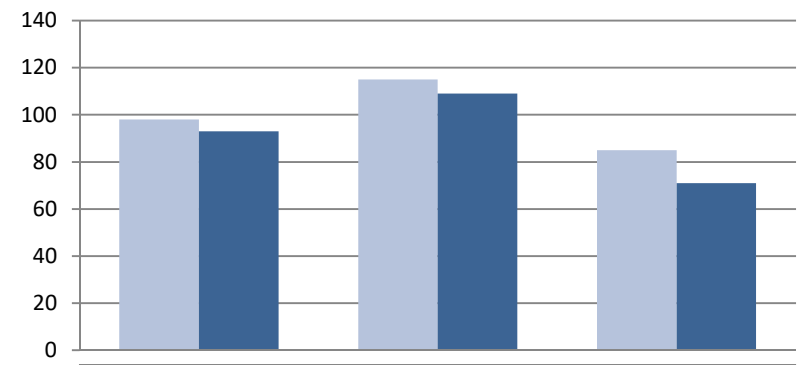
	Apr-19	May-19	Jun-19
No. Children (All)	57	68	53
No. Children (LAC)	20	33	28

No. Children with 3+ Episodes in Period



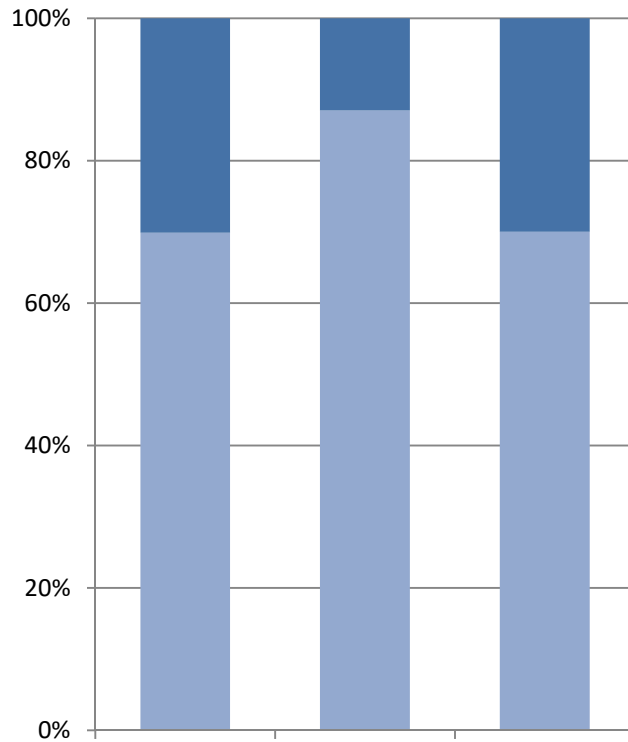
	Apr-19	May-19	Jun-19
3+ Episodes (All)	9	9	10
3+ Episodes (LAC)	7	7	7

Return Home Interviews



	Apr-19	May-19	Jun-19
Offered	98	115	85
Accepted	93	109	71

RHI Complete within 3 Working Days



	Apr-19	May-19	Jun-19
RHI Not Completed in Time	28	14	21
RHI Completed in Time	65	94	49

% by Case status

