

Corporate Parenting Monthly Performance Report

As at Month End: August 2019

***Please note:** Data reports are not dynamic. Although care is taken to ensure data is as accurate as possible every month, delays in data input can result in changes in figures when reports are re-run retrospectively. To combat this at least two individual months data is rerun for each indicator.*

Document Details

Status: Issue 1

Date Created: 19/09/19

Created by: Performance & Quality Team

Performance Summary

As at Month End: August 2019

*'DOT' - Direction of travel represents the direction of 'performance' since the previous month with reference to the polarity of 'good' performance for that measure. Colours have been added to help distinguish better and worse performance. Key Below:-

- ↑ - improvement in performance / increase in numbers
- - no movement - numbers stable with last month
- ↓ - decline in performance, not on target / decrease in numbers

NO.	INDICATOR	GOOD PERF IS	DATA NOTE (Monthly)	2019 / 20					DOT (Month on Month)	RAG (in month)	Target and Tolerances			YR ON YR TREND					LATEST BENCHMARKING					
				Jun-19	Jul-19	Aug-19	YTD 2018/19	DATA NOTE			Red	Amber	Target Green	2014/15	2015/16	2016/17	2017/18	2018/19	STAT NEIGH AVE	BEST STAT NEIGH	NAT AVE	NAT TOP QTILE THRESHOL		
LOOKED AFTER CHILDREN	6.1	Number of Looked After Children	Info	Count	635	636	642	-	As at mth end	↑			n/a	407	432	488	627	642						
	6.2	Rate of Looked After Children per 10,000 population aged under 18 (Council Plan Indicator)	Low	Rate per 10,000	111.5	111.7	112.7	-	As at mth end	↓			99.1	70	76.6	86.6	110.8	112.7	87.8	62.0	64.0	-		
	6.3	Admissions of Looked After Children	Info	Count	15	19	22	109	Financial Year	↑			n/a	175	208	262	330	271						
	6.4	Number of children who have ceased to be Looked After Children	High	Count	28	18	16	109	Financial Year	↓			n/a	160	192	215	194	254						
	6.5	Percentage of LAC who have ceased to be looked after due to permanence (Special Guardianship Order, Residence Order, Adoption)	High	Percentage	55.6%	22.2%	36.4%	38.2%	Financial Year	↑		<33%	33%>	35%+	37.5%	40.1%	27.9%	27.3%	31.5%					
	6.6	Number of SGOs started (Legal Status)	High	Count	5	7	4	25	Financial Year	↓				-	-	-	67	62						
	6.7	Percentage of LAC who have ceased to be looked after due to a Special Guardianship Order	High	Percentage	29.6%	11.1%	18.2%	18.6%	Financial Year	↑				-	-	9.8%	8.2%	13.1%	12.3% (2017)	22.0% (2017)	12.0% (2017)	17.0% (2017)		
	6.8	LAC cases reviewed within timescales	High	Percentage	87.3%	96.5%	88.0%	91.5%	Financial Year	↓		<90%	90%>	95%+	94.9%	83.3%	91.3%	90.6%	88.6%					
	6.9	% of children adopted	High	Percentage	25.0%	11.1%	18.8%	14.7%	Financial Year	↑		YTD	<20%	20%>	22.7%+	26.3%	22.4%	14.4%	13.9%	12.6%	19.2%	32.0%	13.0%	19.0%
	6.10	Health of Looked After Children - up to date Health Assessments	High	Percentage	88.1%	90.5%	89.1%	-	As at mth end	↓		<90%	90%>	95%+	81.4%	92.8%	89.5%	83.7%	91.8%					
	6.11	Health of Looked After Children - up to date Dental Assessments	High	Percentage	76.0%	68.8%	63.6%	-	As at mth end	↓		<90%	90%>	95%+	58.8%	95.0%	57.3%	72.5%	88.4%					
	6.12	Health of Looked After Children - Initial Health Assessments carried out within 20 working days	High	Percentage	100.0%	64.7%	91.7%	84.0%	Financial Year	↑				20.0%	8.4%	18.2%	55.7%	51.1%						
	6.13	% of LAC with a PEP	High	Percentage	-	97.5%	-	-	As at mth end	n/a		<90%	90%>	95%+	#REF!	#REF!	#REF!	#REF!	#REF!					
	6.14	% of LAC with up to date PEPs (Report Termly - End Dec, Mar, Jul)	High	Percentage	-	95.0%	-	-	As at term end	n/a		<90%	90%>	95%+	-	-	98.9%	97.4%	95.0%					
	6.15	LAC Overall absence - % of sessions lost due to absence	Low	Percentage	6.5%	9.0%	n/a	-	As at mth end	n/a		<90%	90%>	95%+	5.0%	4.1%	5.7%	4.7%	9.0%	4.7%	3.5%	4.5%	3.8%	
	6.16	% of LAC who are classed as persistent absentees	Low	Percentage	15.7%	14.8%	n/a	-	As at mth end	n/a					11.7%	12.2%	13.3%	11.7%	14.8%	10.0%	7.1%	10.6%	8.8%	
	6.17	% of LAC with at least one fixed term exclusion	Low	Percentage	9.4%	9.8%	n/a	-	As at mth end	n/a					11.8%	13.1%	15.5%	TBC	12.0%	13.7%	9.0%	11.8%	9.6%	
	6.18	% of LAC on reduced timetable arrangements	Low	Percentage	10.7%	10.7%	n/a	-	As at mth end	n/a					-	-	-	-	-					
	6.19	% of eligible LAC with an up to date plan	High	Percentage	88.2%	87.9%	82.7%	-	As at mth end	↓		<93%	93%>	95%+	98.8%	98.4%	79.1%	89.5%	98.0%					
	6.20	% LAC visits up to date & completed within timescale of National Minimum standard	High	Percentage	94.6%	98.4%	92.4%	-	As at mth end	↓		<95%	95%>	98%+	95.2%	98.1%	74.0%	97.5%	96.9%					
CARE LEAVERS	7.1	Number of care leavers	Info	Count	314	316	321	-	As at mth end	↑			n/a	183	197	223	256	299						
	7.2	% of eligible LAC & Care Leavers with a pathway plan	High	Percentage	85.9%	85.3%	84.2%	-	As at mth end	↓		<93%	93%>	95%+	-	69.8%	99.3%	93.9%	88.1%					
	7.3	% of eligible LAC & Care Leavers with an up to date pathway plan	High	Percentage	85.5%	84.3%	80.8%	-	As at mth end	↓					-	-	-	70.3%	81.4%					
	7.4	% of care leavers in suitable accommodation	High	Percentage	95.9%	95.6%	95.0%	-	As at mth end	↓		<95%	95%>	98%+	97.8%	96.5%	97.8%	96.1%	96.3%	88.3%	94.0%	84.0%	91.0%	
	7.5	% of care leavers in employment, education or training	High	Percentage	60.5%	62.0%	62.0%	-	As at mth end	→		<70%	70%>	72%+	71.0%	68.0%	62.9%	64.1%	64.9%	56.0%	73.0%	51.0%	59.0%	
PLACEMENTS	8.1	% of long term LAC in placements which have been stable for at least 2 years	High	Percentage	60.5%	64.6%	64.8%	-	As at mth end	↑		<68%	68%>	70%+	71.9%	72.7%	66.2%	61.2%	61.2%	67.6%	78.0%	70.0%	74.0%	
	8.2	% of LAC who have had 3 or more placements - rolling 12 months (Council Plan Indicator)	Low	Percentage	12.5%	12.0%	12.1%	-	Rolling Year	↓		13%+	13%<	10.8%<	12.0%	13.0%	11.9%	13.4%	13.3%	10.6%	8.0%	10.0%	8.9%	
	8.3	% of LAC in a family based setting (Council Plan Indicator)	High	Percentage	79.5%	79.1%	79.3%	-	As at mth end	↑				85%>	-	-	81.1%	81.0%	81.9%					
	8.4	% of LAC placed with parents or other with parental responsibility (P1)	Low	Percentage	4.3%	4.4%	4.7%	-	As at mth end	↓					-	-	5.3%	4.3%	7.2%					
	8.5	% of LAC in a Commissioned Placement	Low	Percentage	55.6%	55.3%	52.3%	-	As at mth end	↑					-	43.6%	43.2%	50.5%	52.3%					
FOSTERING	9.1	Number of LAC in a Fostering Placement (excludes family/friend carers)	High	Count	426	419	426	-	As at mth end	↑				-	-	353	414	427						
	9.2	% of LAC in a Fostering Placement (excludes family/friend carers)	High	Percentage	67.1%	65.9%	66.4%	-	As at mth end	↑				-	-	72.3%	66.0%	66.5%						
	9.3	Number of Foster Carers (Households)	High	Count	149	147	147	-	As at mth end	→				-	156	161	154	149						
	9.4	Number of Foster Carers Recruited	High	Count	0	3	0	9	Financial Year	↓				-	13	32	16	11						

*'DOT' - Direction of travel represents the direction of 'performance' since the previous month with reference to the polarity of 'good' performance for that measure. Colours have been added to help distinguish better and worse performance. Key Below;-

- ↑ - improvement in performance / increase in numbers
- - no movement - numbers stable with last month
- ↓ - decline in performance, not on target / decrease in numbers

F	NO.	INDICATOR	GOOD PERF IS	DATA NOTE (Monthly)	2019 / 20				DOT (Month on Month)	RAG (in month)	Target and Tolerances			YR ON YR TREND					LATEST BENCHMARKING				
					Jun-19	Jul-19	Aug-19	YTD 2018/19			DATA NOTE	Red	Amber	Target Green	2014/15	2015/16	2016/17	2017/18	2018/19	STAT NEIGH AVE	BEST STAT NEIGH	NAT AVE	NAT TOP QTILE THRESHOL
	9.5	Number of Foster Carers Deregistered	Info	Count	1	3	0	7	Financial Year	↓				-	16	22	25	21					
ADOPTIONS	10.1	Number of adoptions	High	Count	7	2	3	16	Financial Year	↑				-	43	31	27	32					
	10.2	Number of adoptions completed within 12 months of SHOBPA	High	Count	1	1	0	4	Financial Year	↓				-	23	12	16	11					
	10.3	% of adoptions completed within 12 months of SHOBPA	High	Percentage	14.3%	50.0%	0.0%	25.0%	Financial Year	↓	Red	<83%	83%>	85%+	37.0%	53.5%	38.7%	59.3%	34.4%				
	10.4	Average number of days between a child becoming Looked After and having a adoption placement (A1)	Low	YTD Average	407.9	420.4	449.6	-	Financial Year	↓	Green	511+	511<	487<	393.0	296.0	404.0	325.3	386.9	479.7	362.0	520.0	455.0
	10.5	Average number of days between a placement order and being matched with an adoptive family (A2)	Low	YTD Average	167.1	172.7	167.4	-	Financial Year	↑	Red	127+	127<	121<	169	136	232.9	124.8	212.4	205.6	89.0	220.0	171.8
	11.4	Maximum caseload of social workers in LAC	Low	Average count	25	25	25	-	As at mth end	→	Red	21+	20<	18<	-	19.2	17.0	18.0	23.0				
	11.5	Average number of cases per qualified social worker in LAC Teams 1-3	Within Limits	Average count	18.4	19.2	19.7	-	As at mth end	↑	Green	1+ above range	1 above range	14-20	-	-	-	12.6	19.4				
		Average number of cases per qualified social worker in LAC Teams 4 - 5	Within Limits	Average count	16.2	17.6	16.7	-	As at mth end	↓	Green	1+ above range	1 above range	14-20	0	-	-	11.8	15.3				

LOOKED AFTER CHILDREN

DEFINITION Children in care or 'looked after children' are children who have become the responsibility of the local authority. This can happen voluntarily by parents struggling to cope or through an intervention by children's services because a child is at risk of significant harm.

PERFORMANCE ANALYSIS

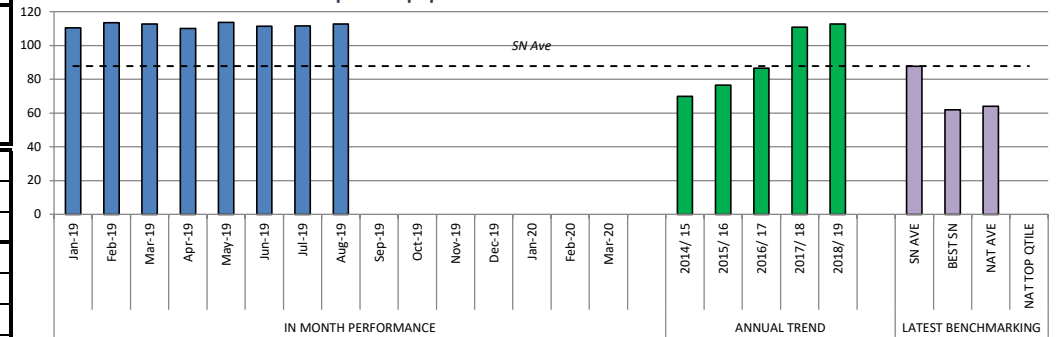
There was another small increase in the numbers of LAC in August to 642. This is now 8 children above the predicted number of 634 as set down in the Big Hearts Big Changes Demand Management Strategy. There are a significant number of discharges planned for September which is anticipated will bring the Strategy back on target. However, final plans can only be made following court applications & judgement. It is difficult to precisely predict timescales for legal proceedings and this can sometimes lead to unexpected delays.

The average age of admissions to care in August was 5.0yrs which is lower than the average of 5.7yrs in July. This augers well for timely permanence plans being achieved in the foreseeable future.

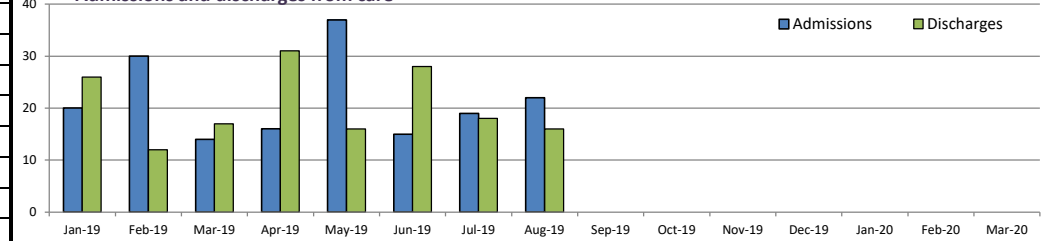
Data Note: An issue has arisen within the Liquid Logic system which is impacting on the reporting LAC children. For some children who have left care and have had previous care episodes, the same 'end date' is copying into the previous episodes within the system. This has been reported, however, until this is rectified we will be unable to accurately report on measures regarding children ceasing care.

		6.2	6.1	6.3	6.4	6.5	6.6	6.7
		Rate of children looked after per 10K pop	Number of LAC	Admissions of children looked after (Episodes)	No. of children who have ceased to be LAC (Episodes)	% of children ceased to be LAC due to permanence (Episodes)	Number of SGO's started (Legal Status)	% of children ceased to be LAC due to an SGO
IN MONTH PERFORMANCE	Jan-19	110.5	629	20	26	51.9%	5	18.5%
	Feb-19	113.4	646	30	12	50.0%	7	16.7%
	Mar-19	112.7	642	14	17	29.4%	6	23.5%
	Apr-19	110.1	627	16	31	27.6%	2	6.9%
	May-19	113.8	648	37	16	47.1%	7	29.4%
	Jun-19	111.5	635	15	28	55.6%	5	29.6%
	Jul-19	111.7	636	19	18	22.2%	7	11.1%
	Aug-19	112.7	642	22	16	36.4%	4	18.2%
	Sep-19							
	Oct-19							
	Nov-19							
	Dec-19							
	Jan-20							
Feb-20								
Mar-20								
YTD	2019/20	-	-	109	109	38.2%	25	18.6%
ANNUAL TREND	2014/ 15	70.0	407	175	160	37.5%	-	-
	2015/ 16	76.6	432	208	192	40.1%	-	-
	2016/ 17	86.6	488	262	215	27.9%	-	9.8%
	2017/ 18	110.8	627	330	194	27.3%	67	8.2%
	2018/ 19	112.7	642	271	254	31.5%	62	13.1%
LATEST BENCHMARKING	SN AVE	87.8						12.3% (2017)
	BEST SN	62.0						22.0% (2017)
	NAT AVE	64.0						12.0% (2017)
	NAT TOP QTILE	-						17.0% (2017)

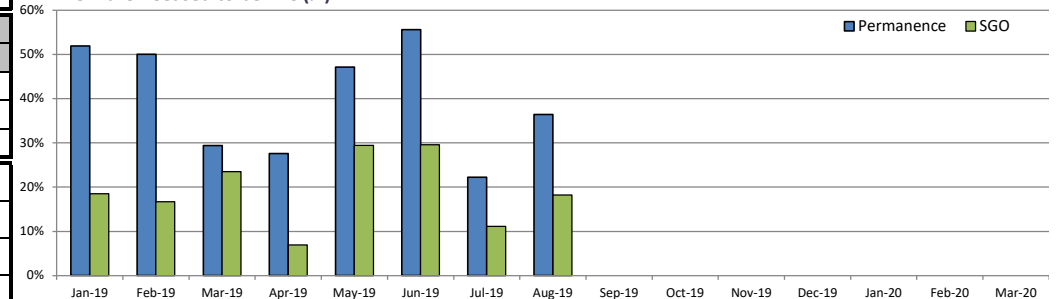
Rate of Looked After Children per 10K pop



Admissions and discharges from care



Children Ceased to be LAC (%)



LOOKED AFTER CHILDREN - REVIEWS, PLANS & VISITS

DEFINITION

The purpose of LAC review meeting is to consider the plan for the welfare of the looked after child and achieve Permanence for them within a timescale that meets their needs. The review is chaired by an Independent Reviewing Officer (IRO)
 The LA is also responsible for appointing a representative to visit the child wherever he or she is living to ensure that his/her welfare continues to be safeguarded and promoted. The minimum national timescales for visits is within one week of placement, then six weekly until the child has been in placement for a year and the 12 weekly thereafter. Rotherham have set a higher standard of within first week then four weekly thereafter until the child has been permanently matched to the placement.

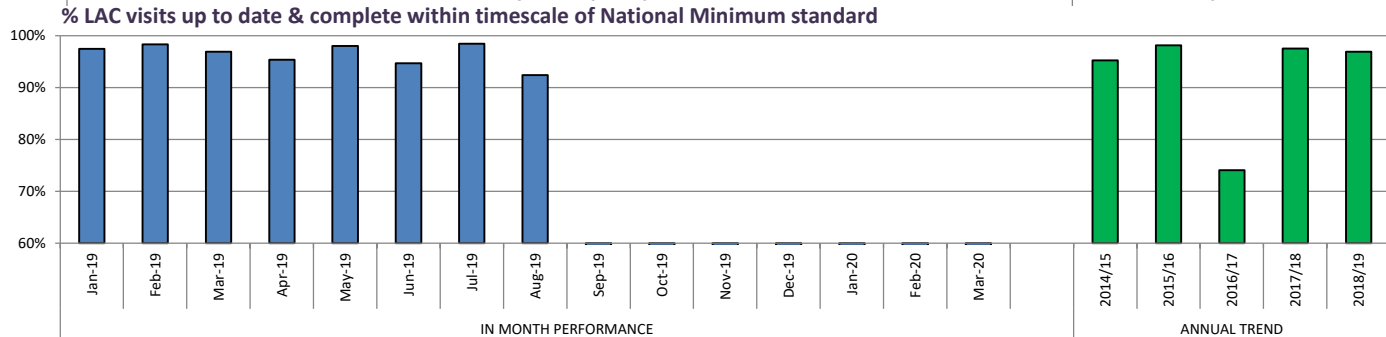
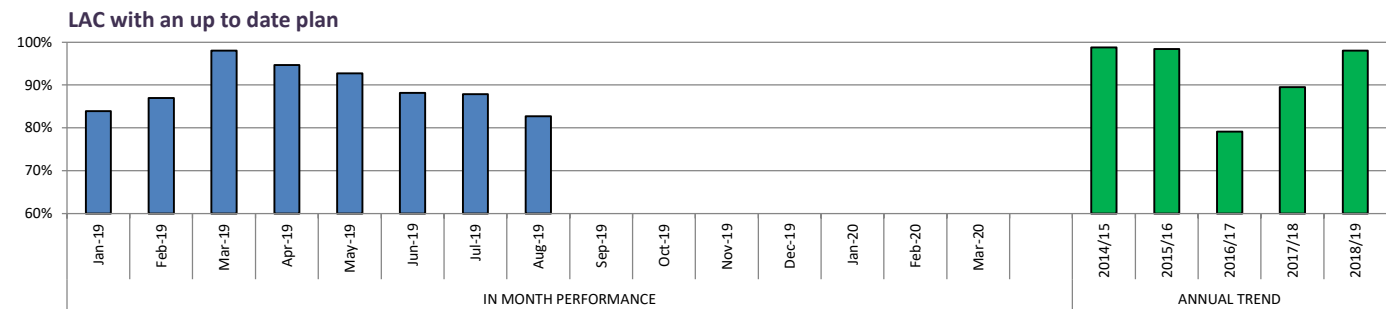
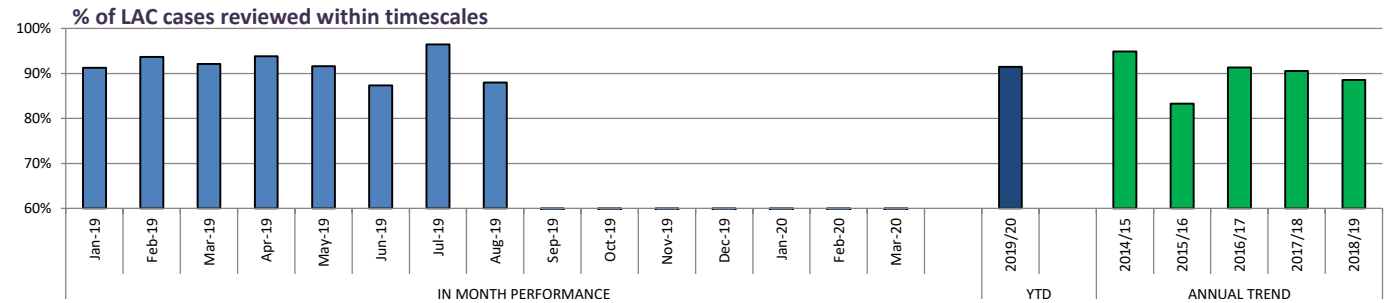
PERFORMANCE ANALYSIS

Performance in respect of all 3 measures dipped over the course of August after reaching a high for the year in July for both LAC Reviews and LAC Visits. Part of the underlying reason for the declining performance in respect of Statutory Reviews is the fact that one IRO has been on long-term sick leave creating a back log in both Statutory Reviewing and Care planning processes. However, they have recently returned to work and a plan to address this back-log has been developed.

The other significant factor has been the summer holidays with both social workers and foster carers/children being unavailable to undertake visits and reviews. It is anticipated the shortfall will be addressed over the course of September/October.

6.8	6.20	6.21
% of LAC cases reviewed within timescales	LAC with an up to date plan	% LAC visits up to date & complete within timescale of National Minimum standard

IN MONTH PERFORMANCE	Jan-19	125 of 137	91.2%	83.9%	614 of 630	97.5%
	Feb-19	148 of 158	93.7%	87.0%	636 of 647	98.3%
	Mar-19	164 of 178	92.1%	98.0%	622 of 642	96.9%
	Apr-19	122 of 130	93.8%	94.7%	598 of 627	95.4%
	May-19	142 of 155	91.6%	92.7%	638 of 651	98.0%
	Jun-19	138 of 158	87.3%	88.2%	601 of 635	94.6%
	Jul-19	110 of 114	96.5%	87.9%	626 of 636	98.4%
	Aug-19	66 of 75	88.0%	82.7%	594 of 643	92.4%
	Sep-19					
	Oct-19					
	Nov-19					
	Dec-19					
	Jan-20					
Feb-20						
Mar-20						
YTD	2019/20	578 of 632	91.5%	-	-	-
ANNUAL TREND	2014/15		94.9%	98.8%		95.2%
	2015/16		83.3%	98.4%		98.1%
	2016/17	652 of 714	91.3%	79.1%		74.0%
	2017/18	1502 of 1658	90.6%	89.5%		97.5%
	2018/19	1668 of 1883	88.6%	98.0%		96.9%



LOOKED AFTER CHILDREN - HEALTH

DEFINITION

Local authorities have a duty to safeguard and to promote the welfare of the children they look after, therefore the local authority should make arrangements to ensure that every child who is looked after has his/her health needs fully assessed and a health plan clearly set out.

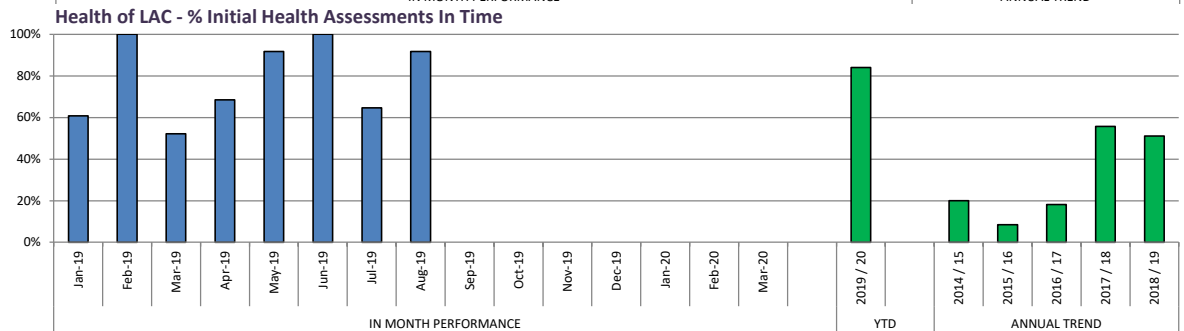
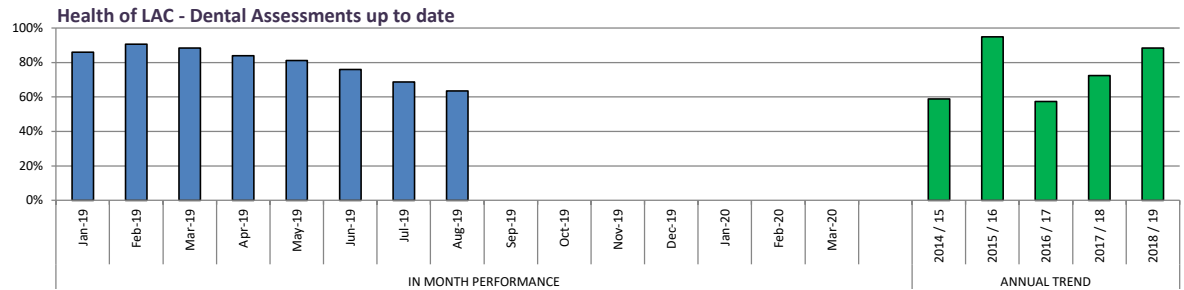
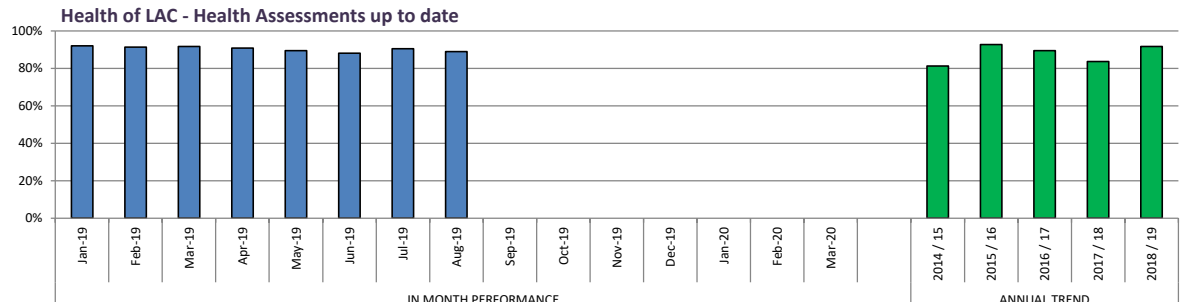
PERFORMANCE ANALYSIS

Performance regarding Initial Health Assessments (IHA) was positive in August at 91.7%; a shortfall of only 1 IHA out of timescale and this brings the YTD performance up to 84%.

Performance in respect of Review Health Need Assessments (HNA's) has ostensibly dipped by just over 1%; however data reported by the LAC Health Team indicates that the overall figure is likely to be several % higher once all records have been brought up to date and performance is re-run for the September report.

Dental assessments have continued to decline and now stand at 63.6% and there will be a drive over the final two quarters of the year to address this data inputting issue.

		6.10	6.11	6.12	
		Health of LAC - Health Assessments up to date	Health of LAC - Dental Assessments up to date	Health of LAC - No. Initial Health Assessments In Time	Health of LAC - % Initial Health Assessments In Time
IN MONTH PERFORMANCE	Jan-19	92.1%	86.0%	14 of 23	60.9%
	Feb-19	91.4%	90.7%	14 of 14	100.0%
	Mar-19	91.8%	88.4%	12 of 23	52.2%
	Apr-19	90.9%	84.0%	13 of 19	68.4%
	May-19	89.5%	81.1%	22 of 24	91.7%
	Jun-19	88.1%	76.0%	22 of 22	100.0%
	Jul-19	90.5%	68.8%	11 of 17	64.7%
	Aug-19	89.1%	63.6%	11 of 12	91.7%
	Sep-19				
	Oct-19				
	Nov-19				
	Dec-19				
	Jan-20				
	Feb-20				
Mar-20					
YTD	2019 / 20	-	-	79 of 94	84.0%
ANNUAL TREND	2014 / 15	81.4%	58.8%		20.0%
	2015 / 16	92.8%	95.0%		8.4%
	2016 / 17	89.5%	57.3%		18.2%
	2017 / 18	83.7%	72.5%	132 of 237	55.7%
	2018 / 19	91.8%	88.4%	136 of 266	51.1%
LATEST BENCHMARKING	SN AVE				
	BEST SN				
	NAT AVE				
	NAT TOP QTILE				



LOOKED AFTER CHILDREN - EDUCATION

DEFINITION

A personal education plan (PEP) is a school based meeting to plan for the education of a child in care. The government have made PEPs a statutory requirement for children in care to help track and promote their achievements. *(PEPs are now in place for LAC aged two to their 18th birthday.)*

PERFORMANCE ANALYSIS

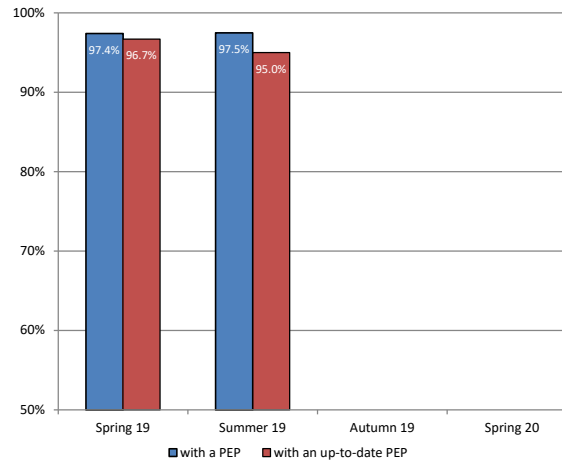
There are no updates to provide for August given the school summer holidays.

Data Note: System produced reports have now been introduced for the below measures which has caused some changes in performance. (PEP data from April 19 onwards is now produced direct from the ePEP system. From June 19 onwards all attendance data is now extracted direct from attendance systems.)

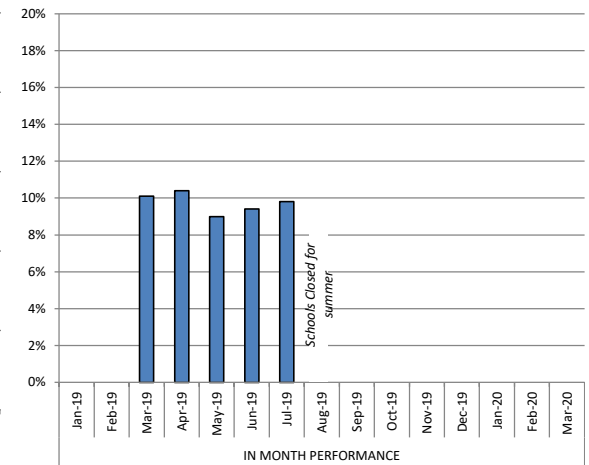
6.13	6.14	6.15	6.16	6.17	6.18
% LAC with a Personal Education Plan (Termly)	% LAC with up to date Personal Education Plan (Termly)	LAC Overall absence - % of sessions lost due to absence (LAC continuous for at least 12 months)	% of LAC who are classed as persistent absentees (LAC continuous for at least 12 months - missing 10%+ sessions)	% of LAC with at least one fixed term exclusion (LAC continuous for at least 12 months)	% of LAC on reduced timetable arrangements (All LAC)

IN MONTH PERFORMANCE	Jan-19	97.4%	96.7%	-	-	-	-
	Feb-19	Spring Term 2019	Spring Term 2019	-	-	-	-
Mar-19			6.5%	14.2%	10.1%	-	
Apr-19	97.5%	95.0%	6.2%	16.6%	10.4%	4.3%	
May-19			6.6%	16.1%	9.0%	4.8%	
Jun-19			6.5%	15.7%	9.4%	10.7%	
Jul-19			9.0%	14.8%	9.8%	10.7%	
Aug-19			n/a	n/a	n/a	n/a	
Sep-19	Autumn Term 2019	Autumn Term 2019					
Oct-19							
Nov-19							
Dec-19							
Jan-20	Spring Term 2020	Spring Term 2020					
Feb-20							
Mar-20							
YTD	2019/20		-	-	-	-	-
ANNUAL TREND	2014/15	76.0%	-	5.0%	11.7%	11.8%	-
	2015/16	97.8%	-	4.1%	12.2%	13.1%	-
	2016/17	97.0%	98.9%	5.7%	13.3%	15.5%	-
	2017/18	93.6%	97.4%	4.7%	11.7%	TBC	-
	2018/19	97.5%	95.0%	9.0%	14.8%	12.0%	-
LATEST BENCHMARKING	SN AVE		-	4.7%	10.0%	13.7%	-
	BEST SN		-	3.5%	7.1%	9.0%	-
	NAT AVE		-	4.5%	10.6%	11.8%	-
	NAT TOP Q TILE		-	3.8%	8.8%	9.6%	-

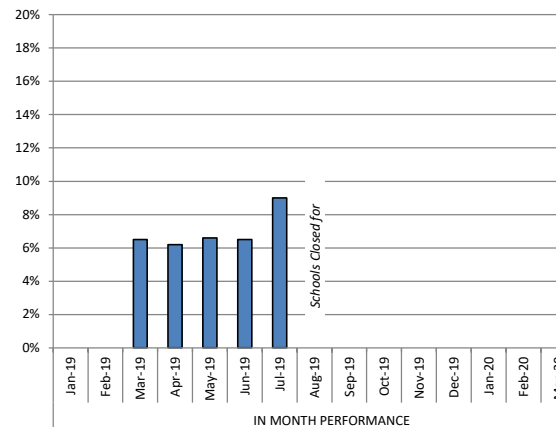
% of LAC with a PEP & % with an up-to-date PEP



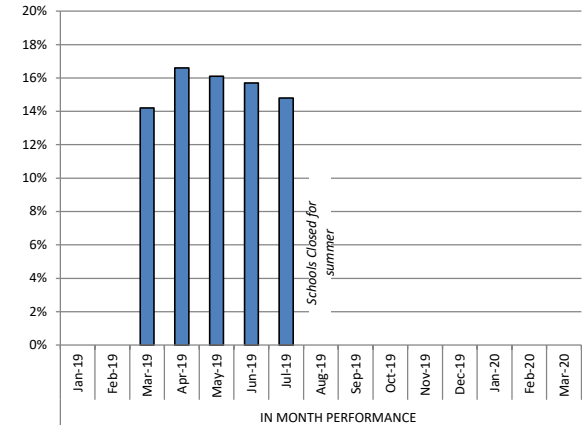
% of LAC with at least one fixed term exclusion



% of sessions lost due to absence



% of LAC who are classed as persistent absentees



CARE LEAVERS

DEFINITION A care leaver is defined as a person aged 25 or under, who has been looked after away from home by a local authority for at least 13 weeks since the age of 14; and who was looked after away from home by the local authority at school-leaving age or after that date. Suitable accommodation is defined as any that is not prison or bed and breakfast.

PERFORMANCE ANALYSIS

The numbers of Care Leavers eligible for a service currently stands at 321 which is once again a year high, and the rise since the start of 2019 is more than that of a full case-load for a Personal Advisor (PA). In addition to this there has been a high level of staff turnover within the team with 4 new PA's commencing work and they have taken some time to be appropriately inducted into the LAC Service and its performance expectations.

Despite this, performance in respect of care leavers who are in employment, education or training (EET) and who are in suitable accommodation has remained consistent at circa 62% and 95% respectively, both of which are well-above the national average and place RMBC in the top quartile.

However, with an up to date Care Plan, performance in respect of Pathway Plans has declined once again to 80.8% and this will be an area of focus in the coming months. Although in all previous months when the report is re-run this figure usually increases by circa 4-6% and so this may not be as significant an issue as may first appear.

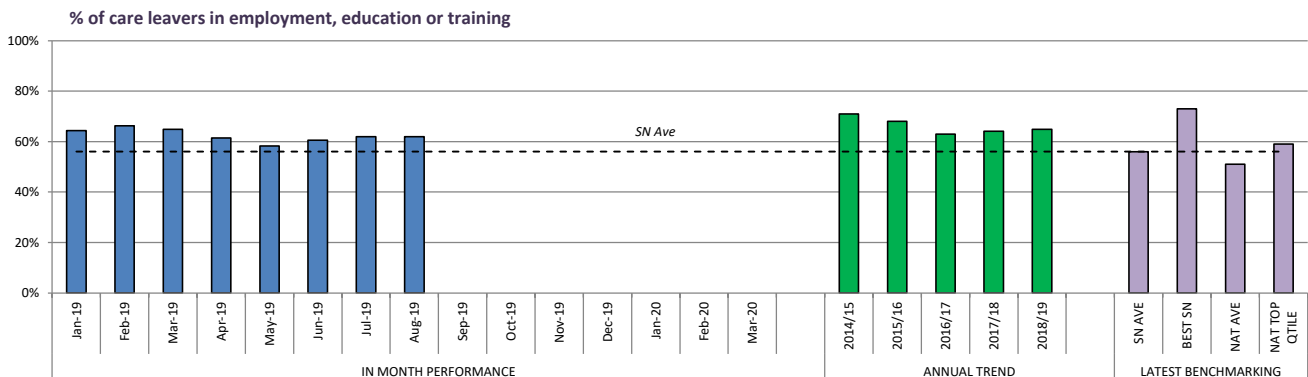
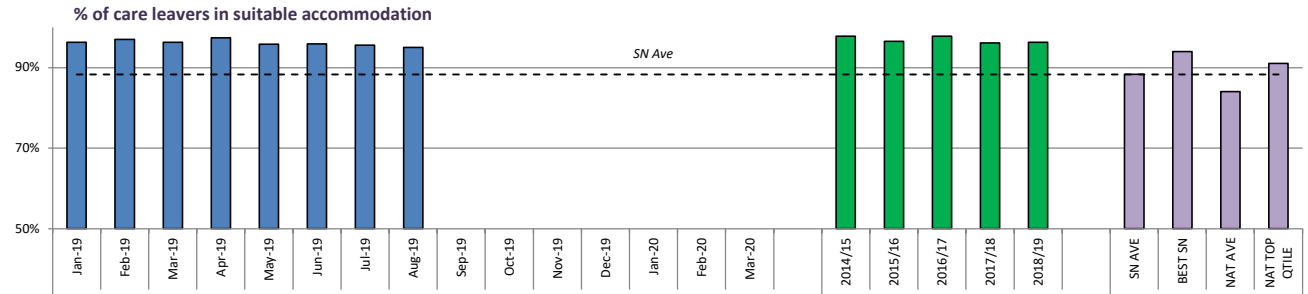
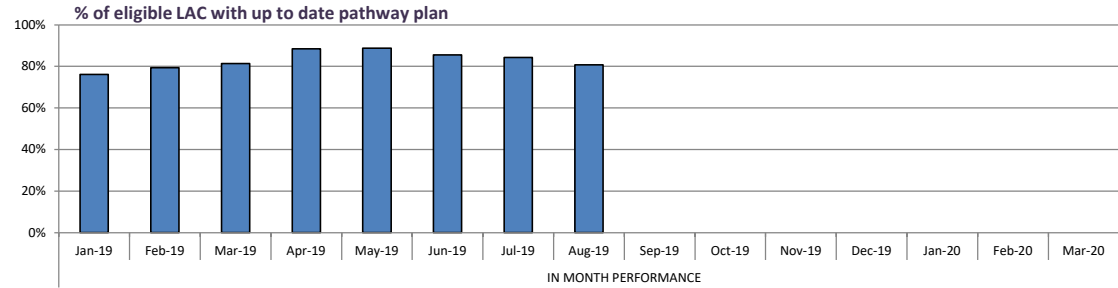
	7.1	7.2	7.3	7.4	7.5
	Number of care leavers	% of eligible Care Leavers with a pathway plan	% of eligible Care Leavers with up to date pathway plan	% of care leavers in suitable accommodation	% of care leavers in employment, education or training

IN MONTH PERFORMANCE	Jan-19	298	86.1%	76.2%	96.3%	64.4%
	Feb-19	297	87.4%	79.3%	97.0%	66.3%
	Mar-19	299	88.1%	81.4%	96.3%	64.9%
	Apr-19	303	88.5%	88.5%	97.4%	61.4%
	May-19	307	88.8%	88.8%	95.8%	58.3%
	Jun-19	314	85.9%	85.5%	95.9%	60.5%
	Jul-19	316	85.3%	84.3%	95.6%	62.0%
	Aug-19	321	84.2%	80.8%	95.0%	62.0%
	Sep-19					
	Oct-19					
	Nov-19					
	Dec-19					
	Jan-20					
	Feb-20					
	Mar-20					

YTD	2019/20	-	-	-	-	-
-----	---------	---	---	---	---	---

ANNUAL TREND	2014/15	183	-	-	97.8%	71.0%
	2015/16	197	69.8%	-	96.5%	68.0%
	2016/17	223	99.3%	-	97.8%	62.9%
	2017/18	256	93.9%	70.3%	96.1%	64.1%
	2018/19	299	88.1%	81.4%	96.3%	64.9%

LATEST BENCHMARKING	SN AVE				88.3%	56.0%
	BEST SN				94.0%	73.0%
	NAT AVE				84.0%	51.0%
	NAT TOP Q TILE				91.0%	59.0%



LOOKED AFTER CHILDREN - PLACEMENTS

DEFINITION

A LAC placement is where a child has become the responsibility of the local authority (LAC) and is placed with foster carers, in residential homes or with parents or other relatives.

PERFORMANCE ANALYSIS

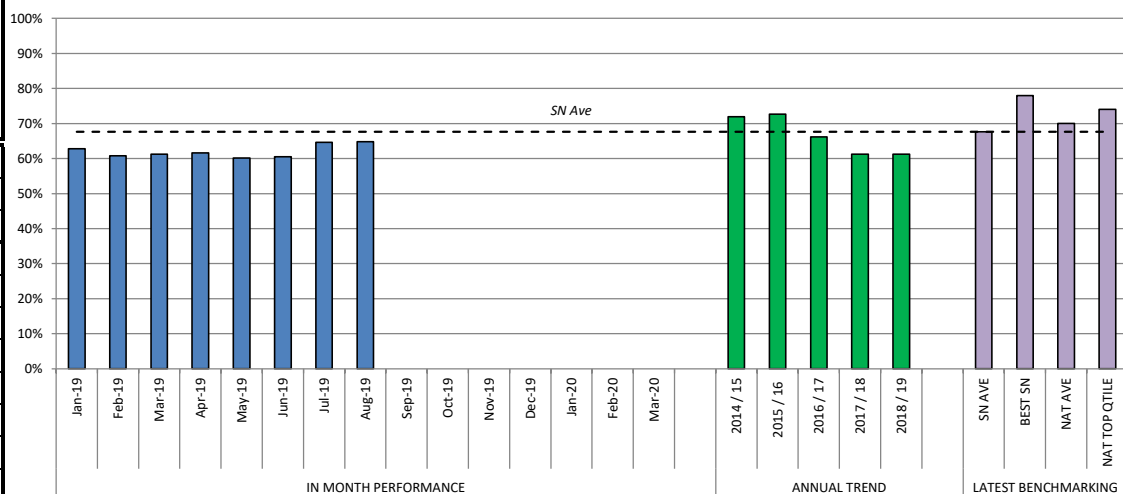
Both measures of placement stability have remained fairly consistent with the long-term measure increasing to 64.8% (3 children in real terms) and the 3 placement moves in 12 months worsening slightly to 12.1% (1 child in real terms) and this latter measure is part of a positive trend given that at the start of the year performance was at 14.7%

The number of children in family based settings has remained fairly consistent over the past 5 months when it has varied by less than 1%.

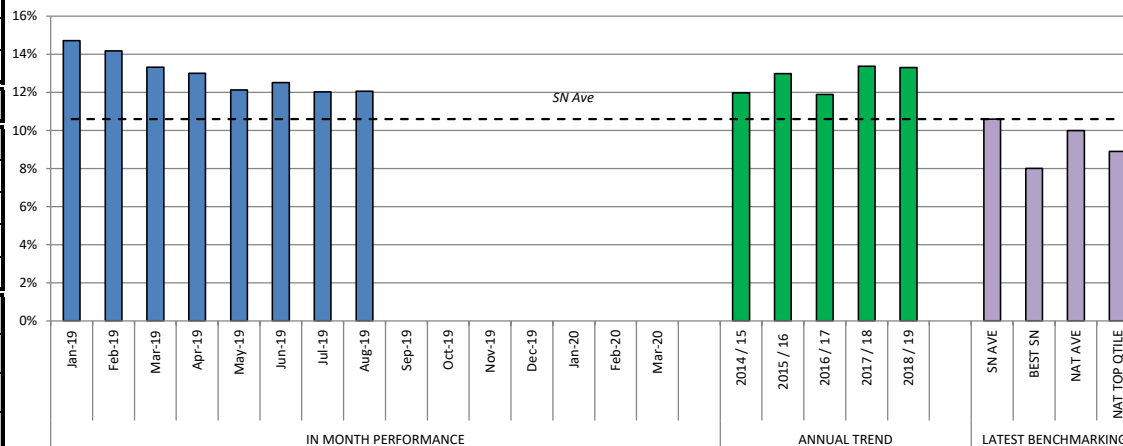
Most positively however, the number of children placed in a commissioned placement has reduced to 52.3% which is the equal second best performance of the year thus far and an overall reduction of 16 fewer commissioned placements from July. This can be at least partially attributed to a focussed step-down project that has achieved some success in moving children from Out of Authority (OoA) residential placements with 10 out of the 31 plans successfully implemented by the end of the month and the other 21 plans remaining on track and 4 more young people due to move to their house project properties by the end of September.

		8.1		8.2		8.3		8.4		8.5		
		Long term LAC placements stable for at least 2 years		LAC who have had 3 or more placements - rolling 12 mth		% of LAC in a family Based setting (includes living with parents)		% of LAC placed with parents or other with parental responsibility (P1)		LAC in a Commissioned Placement (Fostering & Residential)		
IN MONTH PERFORMANCE	Jan-19	91 of 145	62.8%	92 of 625	14.7%	82.4%	7.8%	339 of 629	53.9%			
	Feb-19	90 of 148	60.8%	91 of 642	14.2%	82.5%	8.2%	331 of 646	51.2%			
	Mar-19	90 of 147	61.2%	85 of 638	13.3%	81.9%	7.2%	336 of 642	52.3%			
	Apr-19	98 of 159	61.6%	81 of 623	13.0%	80.2%	6.2%	336 of 627	53.6%			
	May-19	98 of 163	60.1%	78 of 643	12.1%	79.8%	5.1%	342 of 648	52.8%			
	Jun-19	98 of 162	60.5%	79 of 631	12.5%	79.5%	4.3%	353 of 635	55.6%			
	Jul-19	104 of 161	64.6%	76 of 632	12.0%	79.1%	4.4%	352 of 636	55.3%			
	Aug-19	107 of 165	64.8%	77 of 638	12.1%	79.3%	4.7%	336 of 642	52.3%			
	Sep-19											
	Oct-19											
	Nov-19											
	Dec-19											
	Jan-20											
Feb-20												
Mar-20												
YTD	2019 / 20		-		-		-		-		-	
ANNUAL TREND	2014 / 15	110 of 153	71.9%	49 of 409	12.0%	-	-		-		-	
	2015 / 16	109 of 150	72.7%	56 of 431	13.0%	-	-	188 of 431	43.6%			
	2016 / 17	96 of 145	66.2%	58 of 488	11.9%	81.1%	5.3%	211 of 488	43.2%			
	2017 / 18	90 of 147	61.2%	83 of 621	13.4%	81.0%	4.3%	315 of 624	50.5%			
	2018 / 19	90 of 147	61.2%	85 of 638	13.3%	81.9%	7.2%	336 of 642	52.3%			
LATEST BENCHMARKING	SN AVE		67.6%		10.6%							
	BEST SN		78.0%		8.0%							
	NAT AVE		70.0%		10.0%							
	NAT TOP QTILE		74.0%		8.9%							

% long term LAC placements stable for at least 2 years



% LAC who have had 3 or more placements - rolling 12 months



FOSTERING

DEFINITION A foster care family provide the best form of care for most Looked after children. Rotherham would like most of its children to be looked after by its own carers so that they remain part of their families and community .

PERFORMANCE ANALYSIS

There has thus far been very little net gain of foster families over the course of 2019/20 since April with 9 recruited and 7 de-registered (all of varying reasons). In addition, one third of foster carers leaving RMBC are for positive reasons (SGO's or Adoptions).

Recruitment looks increasingly positive with 16 assessments currently being undertaken, a further 9 prospective carers at stage 1 with the potential of progressing to a full assessment and 17 enquiries leading to 2 Initial Visits over the course of August. As a result there is a chance that there will be up to 34 new foster families recruited within the financial year. There will be a further Foster Carer Diversity Community Event held in September to sustain the recent momentum that has built up in respect of this project.

A more refined performance management process is in the midst of being developed in order to support the team to minimise any delays in the assessment and approval process with the aim of reducing the overall timescale from Initial Visit to approval to an average of less than 4 months.

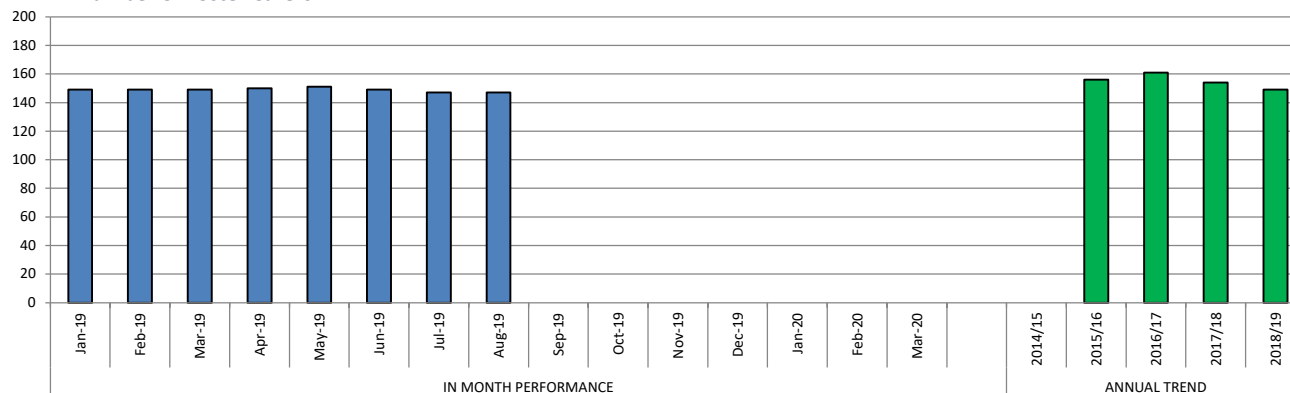
	9.1	9.2	9.3	9.4	9.5
	Number of LAC in a Fostering Placement (excludes relative/friend)	% of total LAC in a Fostering Placement (excludes relative/friend)	Number of Foster Carers (Households)	Number of Foster Carers Recruited (Households)	Number of Foster Carers De-registered (Households)

IN MONTH PERFORMANCE	Jan-19	428	68.0%	149	0	2
	Feb-19	436	67.5%	149	1	1
	Mar-19	427	66.5%	149	1	1
	Apr-19	414	66.0%	150	4	2
	May-19	433	66.8%	151	2	1
	Jun-19	426	67.1%	149	0	1
	Jul-19	419	65.9%	147	3	3
	Aug-19	426	66.4%	147	0	0
	Sep-19					
	Oct-19					
	Nov-19					
	Dec-19					
	Jan-20					
	Feb-20					
	Mar-20					

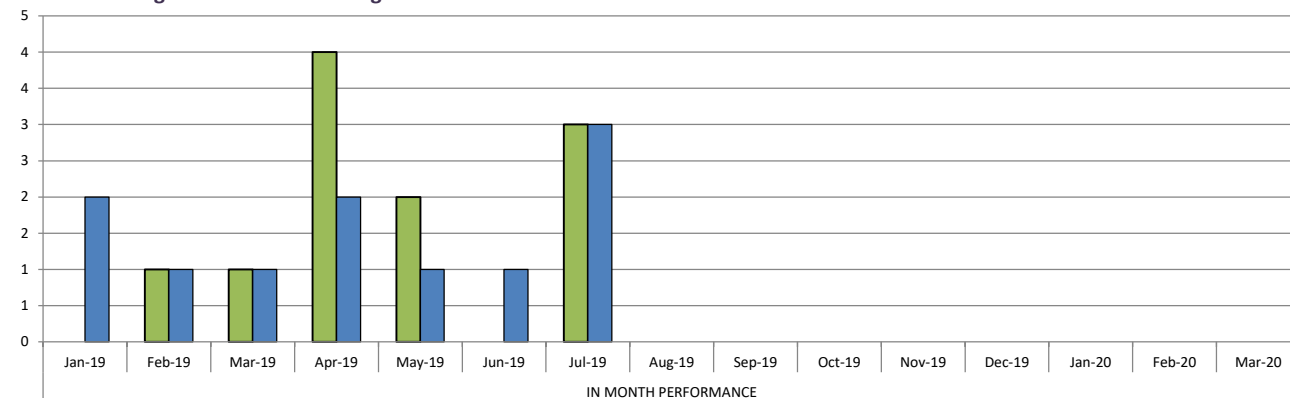
YTD	2019/20	-	-	-	9	7
-----	---------	---	---	---	---	---

ANNUAL TREND	2014/15	-	-	-	-	-
	2015/16	-	-	156	13	16
	2016/17	353	72.3%	161	32	22
	2017/18	414	66.0%	154	16	25

Number of Foster Carers



Fostering Recruitment & De-registrations



ADOPTIONS

DEFINITION

Following a child becoming a LAC, it may be deemed suitable for a child to become adopted which is a legal process of becoming a non-biological parent. The date it is agreed that it is in the best interests of the child that they should be placed for adoption is known as their 'SHOBPA'. Following this a family finding process is undertaken to find a suitable match for the child based on the child's needs, they will then be matched with an adopter(s) followed by placement with their adopter(s). This adoption placement is monitored for a minimum of 10 weeks and assessed as stable and secure before the final adoption order is granted by court decision and the adoption order is made .
Targets for measures A1 and A2 are set centrally by government office.

PERFORMANCE ANALYSIS

There were 3 adoptions finalised over the course of August bringing the yearly 2019/20 total to 16, with the team remaining well placed to at least match if not surpass last year's total of 32 adoptions. This is more the case given that there are 31 children currently placed with their adoptive parents, 5 of whom have lodged their application and a further 23 whose placement is longer than the required 10 weeks but who are yet to lodge. There are a further 12 children with a match identified but not yet placed and 25 for whom family finding is continuing.

Performance in respect of the A1 scorecard continues to decline with a slight improvement in the A2 scorecard. This may not be too much of a surprise given that 68% of the children adopted over the course of 2018/19 were in the 'Hard to Place' categories and despite this, RMBC remains in the top quartile. A1 performance is aggravated by the standard 3 month delay between adopters lodging their application and a court date being set for the adoption hearing which continues to be addressed within the Family Court User forum.

There are currently 15 adopters in the midst of their assessment; 7 at stage 1 and 8 at stage 2 with 4 adopters already having been approved in 2019/20 and so the team is well placed to surpass last year's performance of 12 adopters recruited.

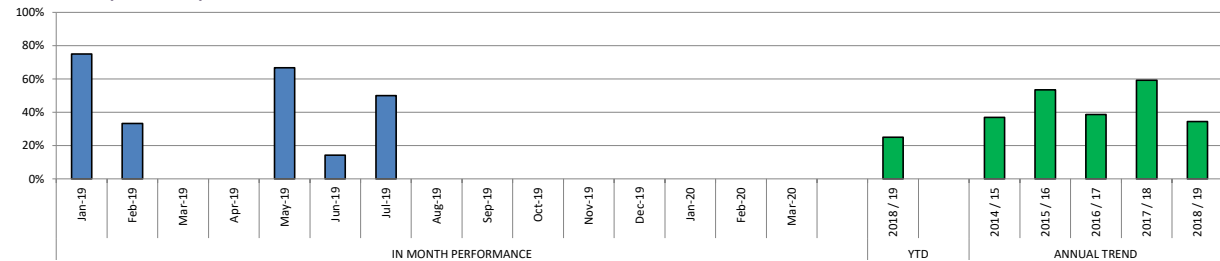
Data Note: Performance is taken from the services manual tracker as the data is not currently recorded on LCS

	10.1	10.2	10.3	10.4	10.5	
	Number of adoptions	Number of adoptions completed within 12 months of SHOBPA	% adoptions completed within 12 months of SHOBPA	Av. No. days between a child becoming LAC & having a adoption placement (A1) (ytd. ave)	Av. No. days between placement order & being matched with adoptive family (A2) (ytd. ave)	
IN MONTH PERFORMANCE	Jan-19	4	3	75.0%	365.5	197.8
	Feb-19	3	1	33.3%	385.3	212.5
	Mar-19	0	0	-	386.9	212.4
	Apr-19	1	0	0.0%	233.0	118.0
	May-19	3	2	66.7%	372.8	162.8
	Jun-19	7	1	14.3%	407.9	167.1
	Jul-19	2	1	50.0%	420.4	172.7
	Aug-19	3	0	0.0%	449.6	167.4
	Sep-19					
	Oct-19					
	Nov-19					
	Dec-19					
	Jan-20					
Feb-20						
Mar-20						
YTD	2018 / 19	16	4	25.0%	-	-
ANNUAL TREND	2014 / 15	-	-	37.0%	393.0	169.0
	2015 / 16	43	23	53.5%	296.0	136.0
	2016 / 17	31	12	38.7%	404.0	232.9
	2017 / 18	27	16	59.3%	325.3	124.8
	2018 / 19	32	11	34.4%	386.9	212.4
LATEST BENCHMARKING	SN AVE				479.7	205.6
	BEST SN				362.0	89.0
	NAT AVE				520.0	220.0
	NAT TOP QTILE				455.0	171.8

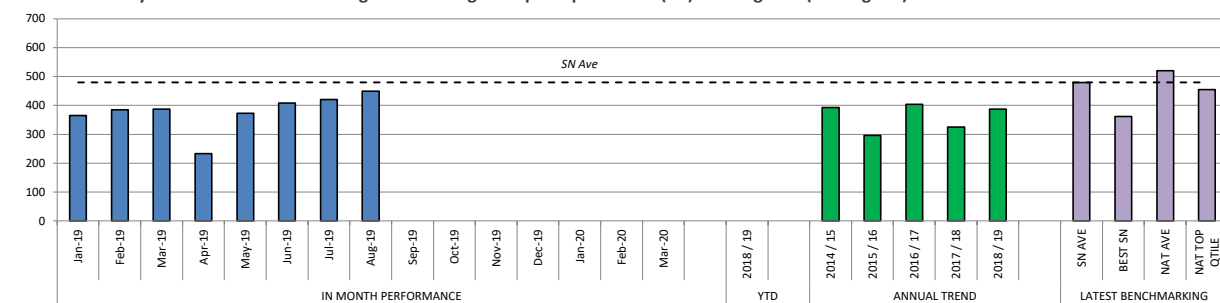
*Annual Trend relates to current reporting year April to Mar - not rolling year

**adoptions have a 28 day appeal period so any children adopted in the last 28 days are still subject to appeal

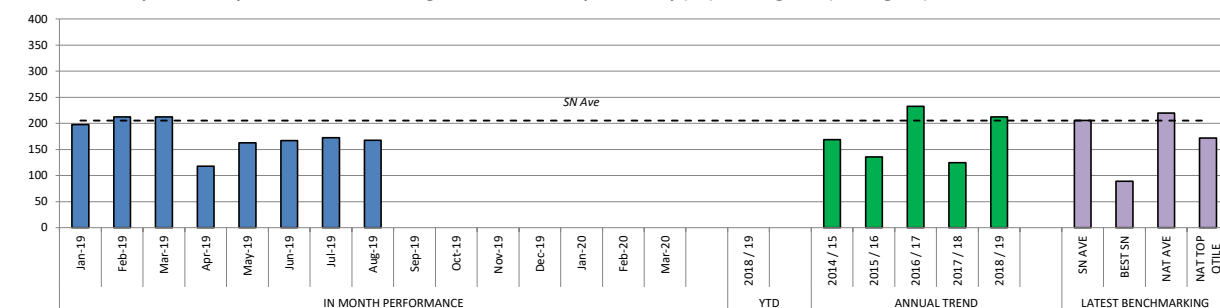
% adoptions completed within 12 months of SHOBPA



Av. No. days between a child becoming LAC & having a adoption placement (A1) - Rolling Year (low is good)



Av. No. days between placement order & being matched with adoptive family (A2) - Rolling Year (low is good)



CASELOADS

DEFINITION

Caseload figures relate to the number of children the social worker is currently the lead key worker. Fieldwork teams relate to frontline social care services including the four Duty Teams, none Long Term CIN Teams, two LAC teams and the CSE Team. All averages are calculated on a full time equivalency basis, based on the number of hours the worker is contracted to work.

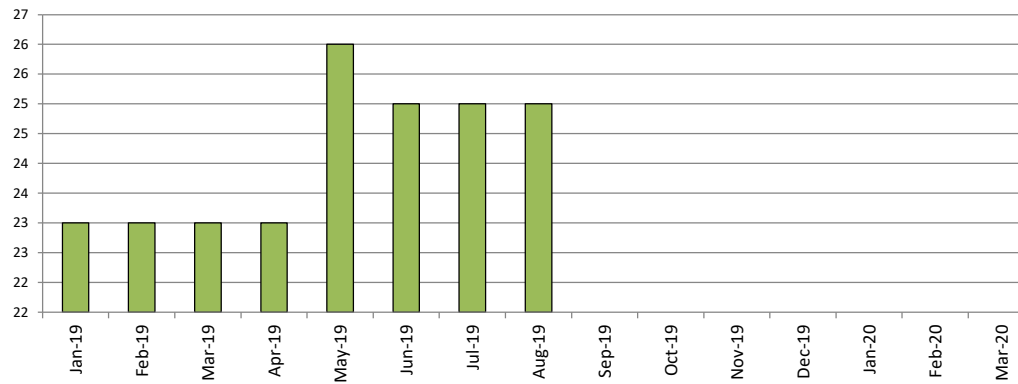
PERFORMANCE ANALYSIS

LAC average caseloads have remained relatively stable over the last 3 months with a slight increase in teams 1-3, and a decrease in 4&5 during August. In terms of regular time commitments there is an average of a further equivalent 3 cases for every social worker in terms of additional workload arising from contact supervision requirements. There is an additional burden arising from time spent undertaking out of Authority visits but this is spread less evenly across the teams and therefore the impact on individual social workers is less easy to calculate.

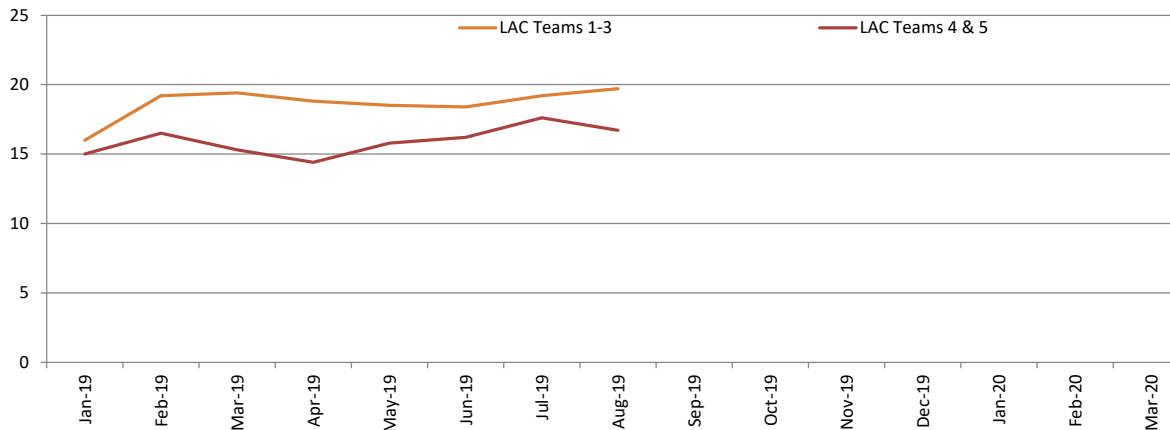
Data Note: Please note that from February 19 onwards adjustments were made to the average caseload calculations effecting FTE for Advanced Practitioners and Newly Qualified Social Workers as follows: AP's: 0.4 of their contracted FTE and NQSW's: 0.6 of their contracted FTE

Maximum caseload of social workers in LAC Teams	11.3		11.4	
	Av. no. cases in LAC Teams			
	Teams 1-3	Teams 4 & 5		

Maximum caseload of social workers



Average number of cases per team



IN MONTH PERFORMANCE	11.3		11.4	
	Maximum caseload of social workers in LAC Teams		Av. no. cases in LAC Teams	
	Teams 1-3	Teams 4 & 5		
	Jan-19	23	16.0	15.0
	Feb-19	23	19.2	16.5
	Mar-19	23	19.4	15.3
	Apr-19	23	18.8	14.4
	May-19	26	18.5	15.8
	Jun-19	25	18.4	16.2
	Jul-19	25	19.2	17.6
	Aug-19	25	19.7	16.7
	Sep-19			
	Oct-19			
	Nov-19			
	Dec-19			
Jan-20				
Feb-20				
Mar-20				

YTD	2019/20	-	-	-
-----	---------	---	---	---

ANNUAL TREND	2014/15	-	-	-
	2015/16	19	-	-
	2016/17	17	-	-
	2017/18	18	12.6	11.8
	2018/19	23	19.4	15.3