

# South Yorkshire Municipal Waste Strategy - Project Highlight Report

## Executive Summary

The UK set out its approach to transposing the EU Circular Economy Package (CEP) into domestic law on June 30<sup>th</sup> 2020. The transposition was not subject to consultation as the changes required were viewed as relatively minor and technical.

As with many other things progress of the Environment Bill was impacted on due to Covid 19. The Bill has had some proposed amendments made which were published on 1<sup>st</sup> September 2020 and is now due to be heard by 28<sup>th</sup> September 2020.

The Resource and Waste Strategy for England (RWSE) sets out how the move towards a more circular economy will be achieved in England.

Many of the objectives of the CEP, Environment Bill and Resource and Waste Strategy for England (RWS) are already reflected in the South Yorkshire Municipal Waste Strategy (SYMWS) however much of the detail that will allow the outcomes of the RWSE to be delivered are subject to further consultation in January 2021. These are likely to include the Deposit Return Scheme, Extended Producer Responsibility and Consistency in Household and Business Collections.

For this reason, some of the Key Strategic Priorities of the SYWS have been put on hold until the outcome of the consultations on the RWSE for England are known.

Workstreams that are continuing are shown below: -

- Development of the Commercial waste services across the Partnership, particularly at the HWRC's (Strategic Priority 3 & 5)
- To have an independent review of the partnership undertaken by Local Partnerships to enable the South Yorkshire Councils to move forward together (Strategic Priorities 2 and 5)
- Assessment of the impact of Brexit on the South Yorkshire Waste Management services (Strategic priority 5)
- Development of future service provision including HWRC post 2020. (Strategic Priorities 2 & 5). Management of recycling market risk (Strategic Priority 5)
- Oversight of the recycling targets across the four councils (Strategic Priority 1)
- How to ensure maximum cost recovery from clinical waste service. (Strategic Priority 3); and

The South Yorkshire Municipal Waste Strategy is being reviewed to ensure alignment with the emerging Resource and Waste Strategy for England. Outcomes and outputs that will potentially be impacted by this are shown in this highlight report in red writing.

The activities are RAG rated as indicated in the table below

Green	On track
Amber	In progress
Red	Behind schedule
Blue	Discovery Stage
Grey	Stop until further details on Resource and Waste Strategy are available

### Coronavirus Pandemic

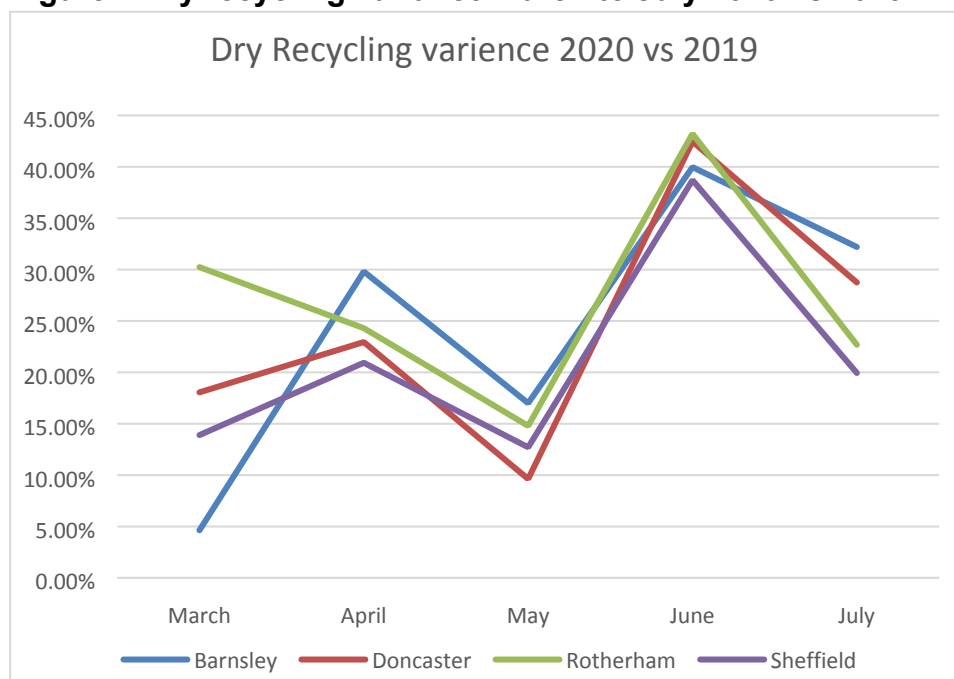
On 23<sup>rd</sup> March 2020 the Government put the country into lockdown due to the Coronavirus pandemic. UK Citizens were told to work from home where possible, only leave home for essential journeys for example for food, exercise or to collect medicines.

### Lockdown impacts on waste levels

#### Dry Recycling

All four councils saw an increase in dry recycling tonnages collected at the kerbside which, along with social distancing measures, put further pressure on resources. Figure 1 illustrates the percentage increase in dry recycling for the South Yorkshire Waste Partnership councils during the months of lockdown.

**Figure 1 Dry recycling variance March to July 2020 vs 2019**



The saw tooth pattern is likely to be due to the difference in the number of collection days in the months from one year to another. The table below shows the cumulative percentage increases in the 4 councils.

**Table 1 Percentage change in dry recycling March – July 2020 vs 2019**

Council	Cumulative percentage change in dry recycling 2020 vs 2019
Barnsley	24.53%
Doncaster	23.99%
Rotherham	26.40%
Sheffield	20.94%

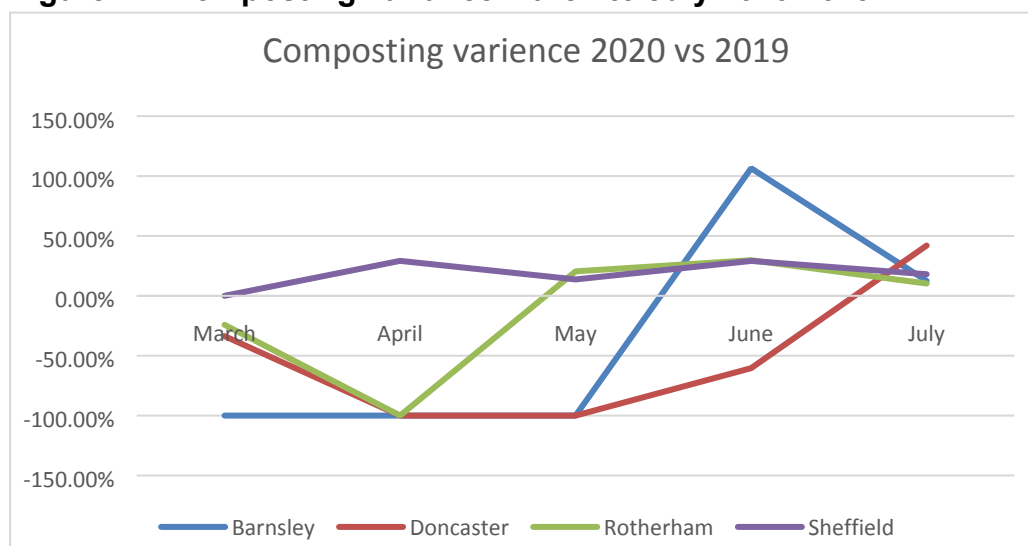
As Rotherham have less capacity in the residual bin than the other councils this may be part of the reason, they have seen a higher percentage increase in recycling at the kerbside. There is also a higher level of contamination in the paper and card in RMBC.

### Composting

Doncaster and Barnsley provide a free garden waste collection service while Rotherham and Sheffield both provide a charged garden waste collection service.

As garden waste collection is a discretionary service for which a charge can be made this was the first service to be stopped due to resource impacts.

**Figure 2 – Composting variance March to July 2020-2019**



The above graph illustrates the impact on composting tonnages collected during the pandemic. Sheffield were the only council that had sufficient resources to continue to deliver the garden waste collection service. There was an increase in demand for their charged service during the lockdown period this may in part have been due to the impact social distancing had on queues at HWRCs. Rotherham reintroduced

their Garden waste collection in April and Barnsley followed suit in May. Doncaster introduced a monthly collection in June

The table below illustrates the cumulative percentage impact on the garden waste collection service.

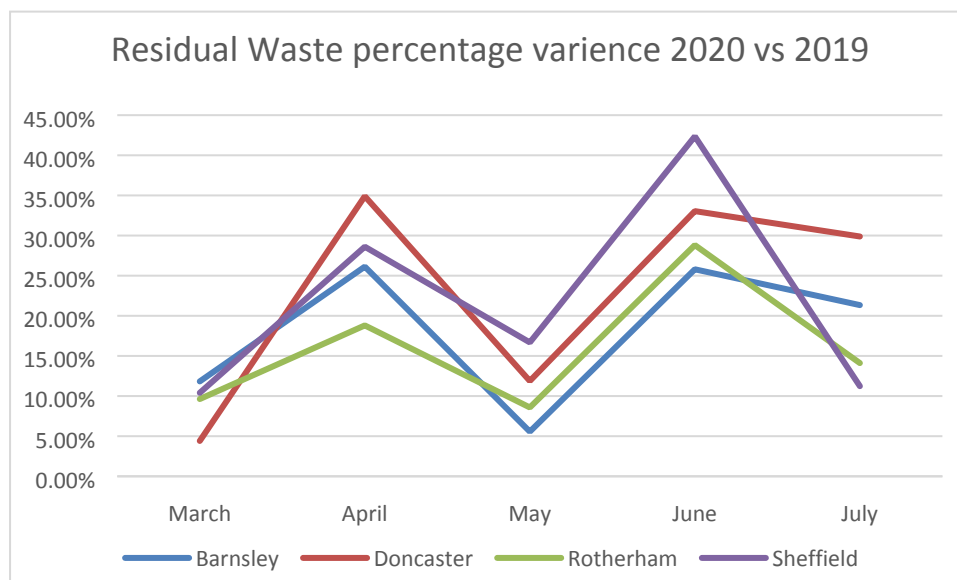
**Table 2 Cumulative percentage change March to July 2020 - 2019**

Council	Cumulative percentage change 2020 vs 2019
Barnsley	-32.94%
Doncaster	-43.51%
Rotherham	-2.52%
Sheffield	34.70%

### Residual Waste

With many people working from home and schools closed household residual waste tonnages increased. Figure 3 below shows the comparative impact on the partner councils. Once more the saw tooth effect is likely to be due to the number of collection days in each month in 2019 vs 2020.

**Figure 3 Residual waste percentage change March – July 2020-2019**



The below table shows the overall percentage increase in residual waste for March 2020 to July 2020 compared to the same period in 2019

**Table 3 Percentage variance in residual waste March to July 2020 - 2019**

Council	Percentage variance in residual waste 2020 vs 2019
Barnsley	17.6%

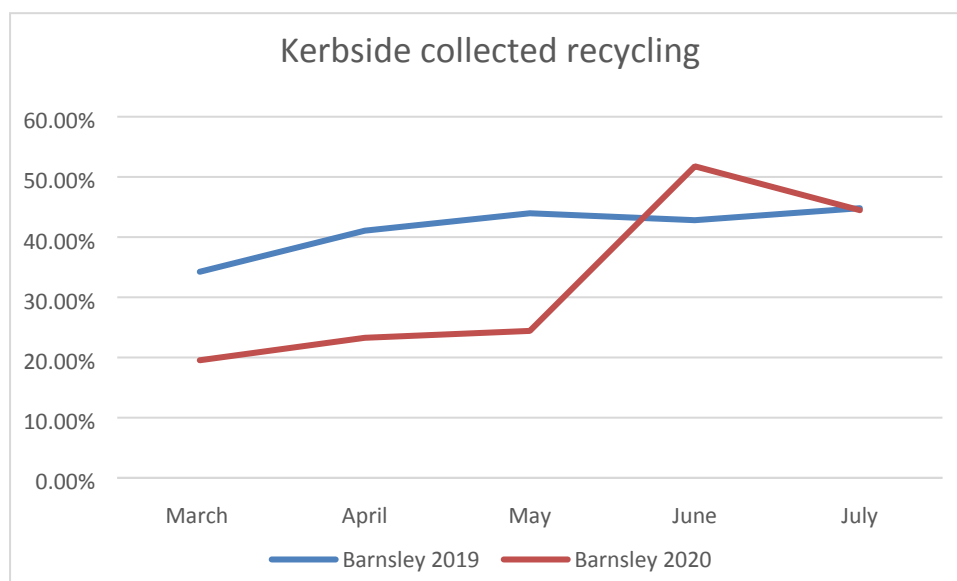
Doncaster	22.43%
Rotherham	15.73%
Sheffield	21.35%

N.B. Rotherham introduced a smaller residual bin in 2019 with the roll out being completed in the first quarter of 2019/20. The restricted capacity may have resulted in the smaller increase in residual waste during lockdown.

### Impacts on Recycling

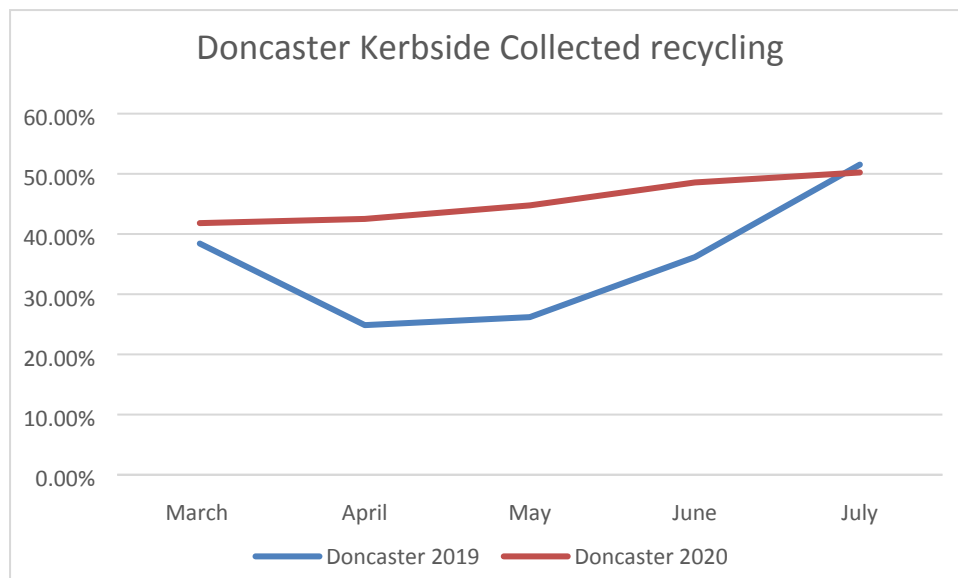
As lockdown measures were implemented in March 2020 there was a minimal impact on the overall recycling rate of the councils for 2019/20. At this stage it is difficult to determine the likely impact on the overall recycling rate for 2020/21. Figure 4 – 7 illustrate the impacts of lockdown on the individual council kerbside collected recycling and composting percentages on a monthly basis. Please note the recycling percentage is not calculated in line with the National Indicators but is a mathematical percentage of total recycling plus composting/total waste collected at kerbside.

**Figure 4 Barnsley overall household kerbside recycling and composting percentage impact**



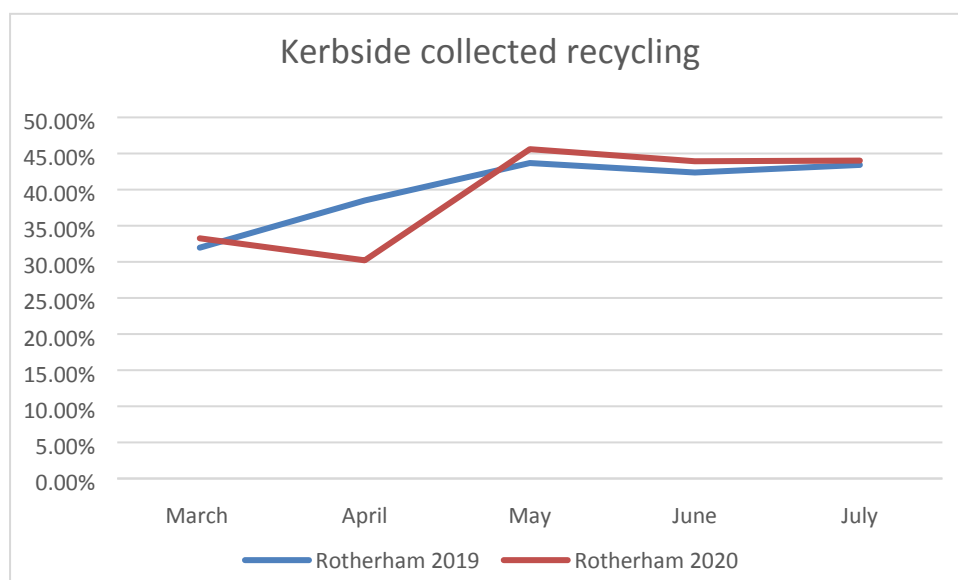
Barnsley stopped paper and card collections due to issues with their offtaker during the first two weeks of this period as well as suspending the garden waste collections until May due to resource issues caused by Covid 19.

**Figure 5 – Doncaster overall household kerbside recycling and composting percentage impact**



Doncaster provide a free garden waste collection service, and this was suspended during the lockdown period due to a lack of resources and was reintroduced, but as a reduced monthly service in June. The impact of that suspension can be clearly seen in the above graph.

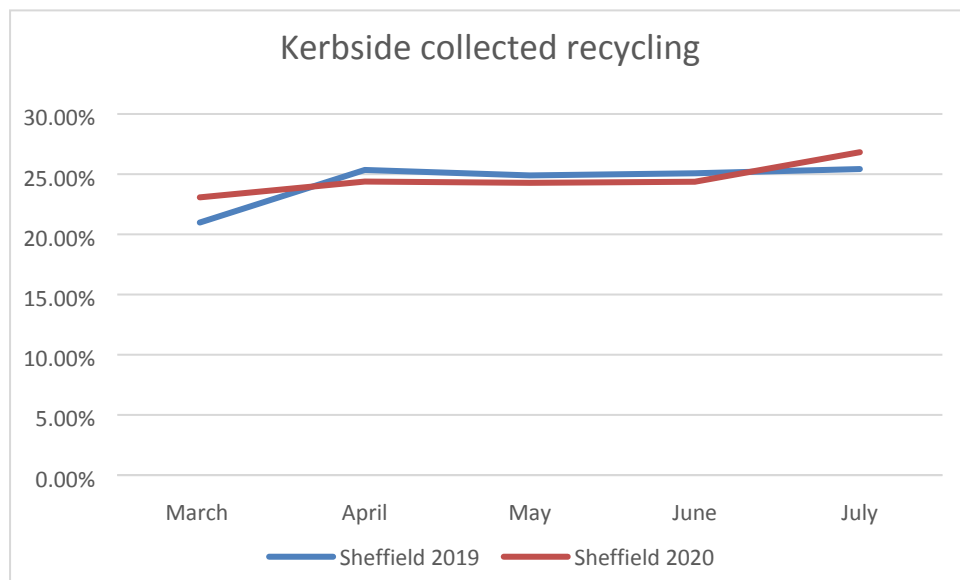
**Figure 6 Rotherham overall household kerbside recycling and composting percentage impact**



Rotherham provide a charged garden waste service and have limited capacity in their residual bin. Although the garden waste service was only suspended for a short period of time the fact that it was a charged service and re-instating the service was

a priority has minimised the impact on recycling at a kerbside level. Rotherham's 20/21 subscriptions are now back to 19/20 levels

**Figure 7 Sheffield overall household kerbside recycling and composting percentage impact**



Sheffield were the only council to continue to deliver all services at the kerbside and although the overall tonnages of recycling and residual waste have increased there has been minimal impact on the overall recycling percentage at the kerbside.

An analysis of the impact of closure and restrictions of materials at the HWRC network on the Councils overall recycling rate as reported to waste dataflow has not yet been undertaken due to lack of time.

**Key Period:** June 2020 – September 2020

- **Strategic Priority 1 – The vision is to encourage and inspire children and adults across South Yorkshire to make less waste by reducing, reusing and recycling more. Interim Priority Lead Lisbeth Baxter (previously Gill Gillies Assistant Director of Environment Regeneration and Environment, Doncaster Council)**

### 1.1 Work-stream Status

**Table 4**

Work-stream	Owner	End Date	Previous meeting rating	Current meeting rating
Increase recycling by 10kg per household by 2021	Steering Group	March 2021	Green	Green
Reduce household waste by 2kg per household each year – year on year until 2021	Steering Group	December 2021	Green	Green
Deliver a targeted reduce, re-use recycle campaign to at least 100,000 households across South Yorkshire each year.	Community Education and Liaison Officer (CELO)	December 2021	Green	Green
Make available waste education resources for all Key Stage 2 and Key Stage 3 children in South Yorkshire by October 2018	Community Education and Liaison Officer (CELO) – Commercial Waste Departments in each council	October 2018	Amber	Green
All of our actions, practices, policies and communications will be reviewed and written to uphold the principles of the waste hierarchy by December 2019	To be assigned by Gill Gillies	December 2019	Blue	Halted for review

The policy workstream has been halted as the emerging Resource and Waste Strategy moves away from weight based to potentially carbon-based targets and places more emphasis on resource efficiency.



## 1.2 Performance trends

### Performance from waste dataflow

**Table 5 – annual performance**

Item	2017-18	2018-19	2019-20	2020-21
Dry recycling kilograms per household <sup>1</sup>	223	221	221	
Garden waste kilograms per household <sup>1</sup>	137	132	133	
Residual waste kilograms per household <sup>1</sup>	522	503	500	
Landfilled kilograms per household <sup>1</sup>	29	25	19	
Total Waste per household	911	881	873	
Number of schools with a Council recycling service	TBC	TBC	TBC	

The information in the table above will be updated on an annual basis at year-end post June following the submission and verification of waste data flow information. As at the 4<sup>th</sup> September not all the Councils had their waste dataflow submissions verified hence this table has not yet been completed.

---

<sup>1</sup> Information extracted from waste dataflow [www.wastedataflow.org](http://www.wastedataflow.org)

### 1.3 Joint / Individual Working Arrangements

**Table 6**

	Barnsley	Doncaster	Rotherham	Sheffield
Residual	BDR PFI MBT/AD Renewi Ends 2040 (can be extended to 2045)			Sheffield's ERF Veolia PPP Ends 2038
HWRC	FCC joint contract with BDR Ends 2021 (potential to extend to 2023)			Subcontracted to Veolia UK until 2021
Garden Waste	Freeland Horticulture Ends extended until 2020 (can be extended a further year).	Freeland Horticulture Ends 2023 (potential to extend to 2025)	Biowise Limited T/A Wastewise Awarded 2020 ends 2023 with the potential to extend by 2 x 12 months	Veolia PPP Ends 2036  Disposal subcontracted to SJB, currently being market tested
Paper and Card	Kerbside - Palm Recycling Extended to 2021	Dealt with through SUEZ Contract. Ends 2026	From 1/1/19 – New contract with Veolia ES, Beighton to recycle Paper and Cardboard. Ends 2024 (potential to extend to 2026)	Veolia PPP Ends 2036
Mixed Dry Recycling	GRUK Recycling Ends 2020 (option to extend)	Dealt with through SUEZ Contract. Ends 2026	From 1/1/19 – New contract with HW Martin ES, to Recycle Glass Bottles, Steel and aluminium tins and cans + plastic Bottles, Pots Tubs and trays and Textiles. Ends 2024 (potential to extend to 2026)	Veolia PPP Ends 2036
Commercial Waste	BDR PFI MBT/AD Renewi Ends 2040	BDR PFI MBT/AD Renewi Ends 2040	In-house collection. Disposal BDR PFI MBT/AD Renewi Ends 2040	Veolia PPP Ends 2036

## 1.4 Key Activities completed during this period

### 1.4.1 Increase recycling by 10kg per household by 2021

Figure 8

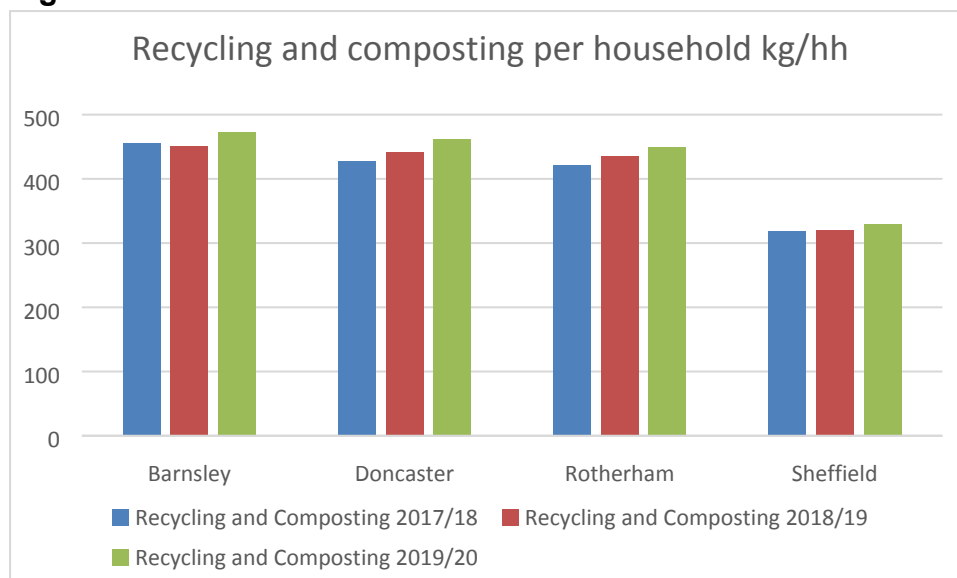


Table 7

Recycling and composting per household	Barnsley	Doncaster	Rotherham	Sheffield*
Kg Change 2019/20 vs 2017/18	17.34	33.49	27.50	10.67

\* Validated information not available at the time of writing the report so may be subject to change.

It can be seen from the information above that there has been an overall increase in recycling and composting in excess of 10kg per household.

#### Barnsley

Dry mixed recycling (DMR) increased by 2.89% in 2019/20 with contamination remaining low at 3.02%. Mixed paper and card recycling had a 2.66% increase with a 5.09% contamination rate.

The paper market has seen an increased quality requirement partly due to China requiring less than 0.5% contamination. The market price has also declined, and this has the potential to impact on income received from recycling.

#### Doncaster

Doncaster collect paper, cans, plastic bottles, liquid food cartons and card in a blue bin with glass continuing to be collected in the green box. Additional materials

(textiles, shoes and Waste Electrical & Electronic Equipment (WEEE)) have temporarily been suspended due to Covid.

Due to Covid, there has been an increase in kerbside tonnages for Residual & Recycling. A combination of June & July the percentage increase was:

- 31% Residual waste
- 25% Mixed Dry Recycling
- 58% Glass

Green waste collections were suspended in March 2020 and resumed on 23<sup>rd</sup> June on a monthly basis. During the first 4 week cycle the tonnage had increased by 200% which was anticipated. Fortnightly collections were reinstated on 1<sup>st</sup> September.

New Treatment contract for the bulky/oversize waste has been awarded which will result in increased recycling and a reduction of waste to landfill is going well.

### **Rotherham**

The Paper and Card bin swap that was introduced in November 2018 has seen a year on year increase. The new Dry Material Recycling (DMR) service implemented in early 2019 gave an increase of 49.37% DMR in 2019/20 compared to the previous year. Contamination levels continue to improve and are now running at an average of 18.5% but with a reducing percentage trend.

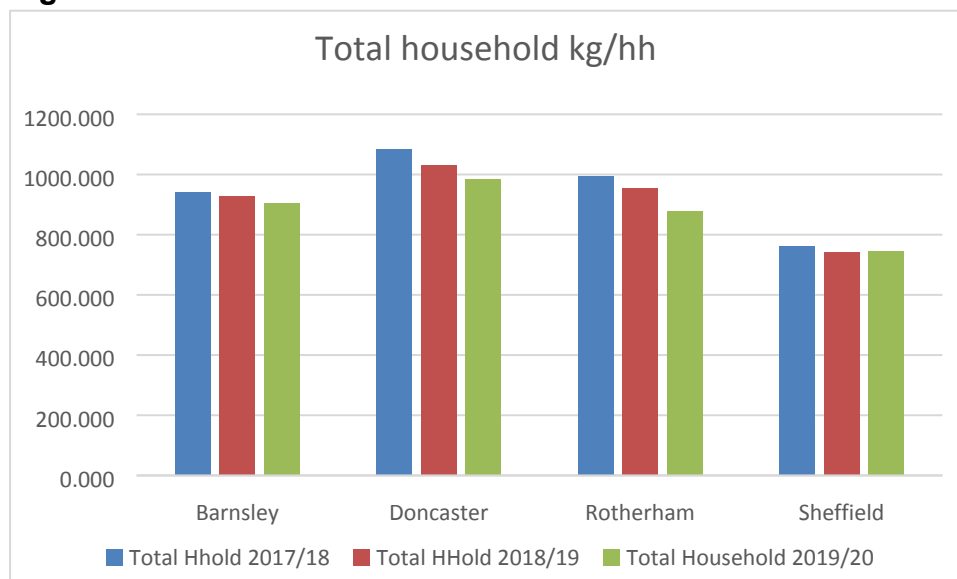
The garden waste service has over 40,000 subscriptions. The amount of waste collected in 2019/20 decreasing by 33.57% (5,307.08 tonnes) compared to the previous year. Garden waste recycling at HWRC's, increased by 35.76% (1,300.21 tonnes) in 2019/20 compared to 2018/19.

### **Sheffield**

The impact of COVID has seen a dramatic increase in the amount of kerbside dry mixed recycling, paper and card levels have remained static. There has also been a significant increase in the number of residents using the kerbside green garden waste collection service with over 16,000 households now signed up to the service. Due to COVID is not possible to accurately report on this objective until the new 'normal' is reached.

### 1.4.2 Reduce household waste by 2kg per household each year – year on year until 2021

**Figure 9**



**Table 8**

Household waste	Barnsley	Doncaster	Rotherham	Sheffield
Kg Change 2019/20 vs 2017/18	-37.771	-99.854	-113.981	-15.091

Doncaster and Rotherham both instigated service changes and have exceeded this target. It should be noted that RMBC introduced less capacity for residual waste and a chargeable garden waste collection service.

#### **Barnsley**

Residual waste tonnages were showing a year on year increase of 1.5% prior to the pandemic. Evaluation is being conducted to identify the impact adding pots tubs and trays to DMR will have on levels of residual waste per household.

#### **Doncaster**

The blue bin roll out for co-mingled dry recycling has now bedded in and the focus has moved to increasing participation and improving quality. The 'love food hate waste' campaign has proved successful in Doncaster. Residual waste has increased by up to 20% since the start of lockdown measures was introduced on 23<sup>rd</sup> March 2020. This target may be unachievable this year.

## **Rotherham**

The new service introduced new materials (plastic bottles, pots, tubs and trays and more recently tetra Pak) to their kerbside collection, reduced the capacity of the residual bin (240ltr to 180ltr) and introduced a chargeable garden waste service with more than 40,000 householders signing up to the service. This has resulted in an overall decrease of 6.65% (4,329.66 tonnes) in residual waste arising's for 2019/20 compared to the previous year.

## **Sheffield**

Residual waste was again tracking lower than the previous years, however the impact of COVID has reversed this trend. Due to COVID is not possible to accurately report on this objective until the new 'normal' is reached.

### **1.4.3 Deliver a targeted reduce, re-use recycle campaign to at least 100,000 households across South Yorkshire each year.**

#### **1.4.3.1 Composting Campaign 2020**

A campaign to promote more home composting was run by the Barnsley, Doncaster and Rotherham (BDR) Waste Partnership and Renewi

Children were invited to produce something creative to promote or explain composting, and they rose to the challenge with posters, models, a Tik Tok video and a stop motion animation. Prize bundles worth £100 included a compost bin, gardening tools, a grow your own pizza kit, seeds and books about composting and gardening, with a book and a certificate for runners up.

A social media competition for adults attracted entries for the chance to win three state-of-the-art £200 Hotbin hot composting systems.

### **1.4.4 Provide resources for Key Stage 3 children in South Yorkshire by October 2018**

Renewi and the BDR contract management team have now taken the decision to suspend bookings of the Rubbish Adventure workshop and site tours until the New Year at the earliest and potentially the remainder of the financial year. This is due to ongoing concerns about how we can make these Covid-19 safe and prevent the risk of spreading the disease. In place of the school workshop the CELO and the communications team have been working on a series of school resources tailored to specific Key Stages (age groups) that focus on the 3Rs, climate change, the facility and, in the case of secondary aged pupils, the circular economy and UN sustainability goals. Rebecca the Assistant CELO has worked really hard on these and it is anticipated that they will be available for teachers to access from the BDR online website in September. We will also continue to run school presentations, talks and Q&As online when requested.

The team are also working to create recordings of the Love Food Hate Waste and Treatment Facility talks, write a Love Your Clothes talk and potentially record a site tour video for community groups to view online or download and watch.

At the request of the Councils the team have continued to share composting messages through their social media in addition to topics such as the safe disposal of PPE, batteries, plastic swaps and food waste.

Over the last few months the team has been creating content for an overhauled BDR online website. This will dramatically change the existing site, updating the focus from the construction and early functioning of the facility. The new version will be more user-friendly, better laid out and will provide residents with a much clearer picture of what they can do to help slow climate change, reduce waste, improve the environment and be involved in local campaigns. There will also be a revised section for teachers to download resources to use in school and this will eventually house all recorded sessions too. RMBC are currently building the new site and expect to have it finished before the end of the month.

We continue to chase those organisations selected for support from the Renewi Corporate Social Responsibility fund. However, several of these have been closed since March but are expected to re-open this week. The CELO and Assistant CELO have been working with the communications team to augment the on-line resources for schools.

#### **1.4.4.1 Waste reduction website**

The monthly re-use day campaign is continuing. In July this focused on water bottles, August was re-usable cutlery and September is clothes re-use. This has been picked up by BBC Radio Sheffield and the team are producing an information pack to help schools and community groups set up a uniform re-use project if they wish.

Throughout the summer the team are running a focus on food waste with increased food waste messaging on Instagram, Facebook and Twitter and are replacing the live events that would usually take place with Facebook live Q&A sessions and giveaways. The first Facebook live has been seen by nearly 400 people and a series of these will be set up which will be much shorter and focus on a specific type of food waste such as salad, fruit, bread, cheese, vegetables etc and include advice on how to store them as well as some use-up ideas.

**1.4.5 All of our actions, practices, policies, and communications will be reviewed and written to uphold the principles of the waste hierarchy by December 2019.**

**This has been put on hold until further detail on the Resource and Waste Strategy is available.**

#### **1.5 Key Activities planned for next period (up to – December 2020)**

## **Recycle Week 21<sup>st</sup> to 27<sup>th</sup> September 2020**

Recycle Week, developed by Recycle Now, is the largest national annual recycling campaign and has been running since 2004. The campaign runs for a week and is backed by local governments across the country, the media and large consumer brands such as Morrisons, Heinz, Coca-Cola, and PepsiCo.

The aim is to deliver a clear, consistent message across the whole of the UK with the focus this year being on getting more of the right things in the right bin, more often.

This year Recycle Week will run 21<sup>st</sup> – 27<sup>th</sup> September 2020 and be the biggest yet. The theme this year is to thank the nation for recycling through such challenging times appendix 1 to this report contains a brief on the materials to be used.

### **Barnsley**

The main focus was to be reducing kerbside paper and card contamination and evaluating the impact introducing pots tubs and trays to DMR will have on residual waste, recycling rate, CO2 emissions, circular and inclusive economies. While these activities will still be undertaken resources are being diverted into ensuring a robust service provision while the global pandemic continues.

### **Doncaster**

Doncaster are working with their contractors to ensure the robust delivery of their services during the current pandemic along with this they are investigating.

- Commercial options for the HWRC's are in discussion, along with the option to extend the opening times for the sites
- Work is being undertaken with Refurnish/SUEZ to establish how successful the re-use bulky collections are
- Consideration is being given to changing the structure to the bulky waste collections, to alter the number of items that can be collected per order
- Plans to promote the Commercial Waste & Recycling Service and enable the authority to be more competitive with the pricing structure

### **Rotherham**

As well as ensuring a robust service provision during the current pandemic RMBCs focus areas this year are:

- Planning a recycling service for commercial operations including schools
- Increasing the quality of recycling collected at the kerbside and participation in the service, particularly in the communal bins at flats
- Introducing a bin reminder service for the residents
- Round efficiencies by procuring route optimisation software
- Start the tender for the new route management system which will need renewing October 2021
- Increasing the opening days of each HWRC to 7 days a week



## Sheffield

Targeted communications campaign took place in one area as planned to help improve recycling performance, however this was only a few weeks prior to the start of the lock down in March. The second campaign in a different area of the City is planned for the coming months.

The review of the HWRC provision in Sheffield is being undertaken and a working group will explore options around creating a supersite within the city will meet in the coming months to progress to a decision being taken before January.

## BDR Communications Group

Recycle week, thank you for recycling, right things in right bins and waste reduction messages continue to be the focus of the BDR Communications Group.

## 2. Strategic Priority 2 – Our vision is to work hard to deliver and maintain a dependable and reliable service Priority Lead Gillian Charters, Head of Waste, Sheffield City Council

### 2.1 Work-stream Status

Work-stream	Owner	End Date	Previous meeting rating	Current meeting rating
Implement, publish and promote South Yorkshire Waste Customer Charter	Gill Gilles	December 2018	Red	Halted for review
Have a plan for how South Yorkshire can deliver a standardised service including materials, containers and collection frequency.	Gillian Charters	December 2019	Blue	Halted for review
Produce and make available a commercial waste guide for businesses across South Yorkshire by March 2019	To be assigned by Steering Group (currently with CELO)	March 2019	Red	Halted for review
Look at the possibility of a shared waste asset and resource plan by April 2019 to maintain a reliable and user-friendly service for residents	Gill Charters	April 2019	Blue	Halted for review

### 2.2 Key Activities Completed This Period

**This work stream has been halted as the emerging Resource and Waste Strategy for England is likely to impact on household and commercial waste collections and may influence the infrastructure required to deliver the outcomes.**

### 2.3 Key Activities planned for next period (up to – December 2020)

Local Partnerships have completed various scenarios for a standardised service across the region taking into account the recent release of “Our waste, our resource: a strategy for England” and the South Yorkshire Councils aspirations.

Carbon modelling work has been completed and the information has been cascaded to Steering Committee. Once comments have been provided to Local Partnerships the work will be completed and Local Partnerships will present their findings to the South Yorkshire Councils.

## 3. Strategic Priority 3 – Our vision is that all four councils will work together more closely to deliver value for money services Priority Lead, Paul Castle, Service Director, Environment & Transport, Barnsley Council

### 3.1 Work-stream Status

Work-stream	Owner	End Date	Previous meeting rating	Current meeting rating
Develop and annually review a knowledge bank capturing local and national best practice by December 2018	Beth Baxter	December 2018 (subject to annual review)	Amber	Amber
Deliver and implement a joint commercial plan which will save the Councils £2 million	Paul Castle	December 2021	Amber	Halted for review
Develop a joint calendar of events annually to ensure coverage of emerging best practice and developments in the sector with the least cost	Paul Castle	March 2021	Amber	Halted for review
Support an additional 300 Small Medium Enterprises SMEs across South Yorkshire to access appropriate and cost-effective waste services by December 2021,	To be assigned by Paul Castle	December 2021	Blue	Halted for review

### 3.2 Key Activities Completed This Period

Information on clinical waste, Brexit and the Environment Bill uploaded on to the portal.

### 3.3 Key Activities planned for next period (up to – December 2020)

The South Yorkshire Partnership Board pre-meeting of Portfolio Holders has been extended to allow the Portfolio Holders more time to discuss key strategic priorities and how to progress them.

### 3.4 Key Decisions/Support required:

Although the RWSE consultations are unlikely to progress until the UK has recovered further from the pandemic the Councils should be considering the overall direction of the SYMWS and its links to the RWSE as part of their recovery plan for waste services in the region. This is particularly important now the Circular Economy Package has been transposed.

## 4. Strategic Priority 4 – Our vision is to continue exploring how waste technology can be used to improve recycling and waste services. Priority Lead, Tom Smith Assistant Director, Regeneration and Environment, Rotherham Council

### 4.1 Work stream Status

Work-stream	Owner	End Date	Previous meeting rating	Current meeting rating
Real time collection information to be available to customers online	Tom Smith	December 2021	Blue	Blue
On-going installation of GPS tracking, state of the art camera systems in-cab technology in 100% of all new and replacement collection vehicles	Tom Smith	December 2021	Green	Green
Invest in resources to drive improved use of new and existing technology for both staff and customers e.g. more online support	Tom Smith	December 2021	Blue	Blue

### 4.2 Key Activities Completed This Period

The global pandemic has resulted in more people working from home including waste management officers. Work to improve the digital offering to customers from waste management is ongoing.

Waste management teams across the region have been holding Microsoft teams meetings to progress projects where possible.

#### 4.3 Key Activities planned for next period (up to – December 2020)

Further investigation into how digitalisation can improve waste services. A PhD student is undertaken a project on Microsoft Teams and how it has innovated the delivery of the service.

#### 4.4 Key Decisions/Support required:

The PhD student will require assistance in the form of interviews to gain an understanding of the benefits and disbenefits of the use of Microsoft Teams.

### 5. Strategic Priority 5 – Our vision is to be proactive to influence decision making on waste at a European, national, and local level and to drive investment in infrastructure within South Yorkshire. Beth Baxter BDR Manager

#### 5.1 Work stream Status

Work-stream	Owner	End Date	Previous meeting rating	Current meeting rating
Lobby central government on emerging waste policies and legislation	Beth Baxter	December 2021	Amber	Green
Seek to secure £5 million of external funding and investment for South Yorkshire by 2021 for use in infrastructure projects e.g. Household Waste Recycling Centres	Beth Baxter	December 2021	Grey	Halted for review
Provide resources for continuing professional development for industry recognised bodies	Beth Baxter	December 2021	Amber	Amber

#### 5.1.1 Lobby central government on emerging waste policies and legislation

##### 5.1.1.1 Environment Bill

At the State Opening of Parliament on 19 December 2019 the Queen said environmental measures on several fronts – including a ban on plastic exports – were to be enshrined into law as part of a proposed environment bill. Since then the bill has

had a first reading with no debate on the 30<sup>th</sup> January 2020 and a second reading on 26<sup>th</sup> February 2020. It was subject to debate in March 2020.<sup>2</sup>

The Coronavirus pandemic has caused delays to the progress of the Environment Bill and the Committee is now scheduled to report by Tuesday 29 September 2020.

The Bill has been broadly welcomed by the Local Government Association (LGA)<sup>3</sup> although there are some aspects that raise concerns including:

- Separate collections of recyclable materials as this could cause contractual and financial difficulties
- The Bill's proposals to ban the export of plastic waste to non-OECD countries. The LGA note that the recycling infrastructure in the UK is not sufficiently developed to process the quantities of this material, this will need to be addressed.
- The need for the Extended producer responsibility measures to set out the "full net costs to councils" this should include impacts from litter and fly-tipping

The Resources and Waste Strategy for England published in December 2018 gives pointers to the longer-term policy direction for waste. This is subject to further consultation likely to take place in January 2021 and currently requires a mandatory weekly separate collection of food waste and outlines core materials that should be collected for recycling. This could have major impacts on the PFI Contractors for BDR and Sheffield and their sub-contractors Renewi, Veolia and other contractors we work with, as well as potential impacts on the services we provide.

The Chair of the Joint Waste Board has written to the Under Secretary of State and the Chief Secretary to the Treasury raising concerns on the lack of clarity in the Strategy on funding and timescales local authorities face in relation to implementing changes to their services. As yet there has been no response to the letter.

#### **5.1.1.2 Brexit**

The UK left the European Union at 23:00 GMT on 31 January and has now entered an 11-month period, known as the transition period, that keeps the UK bound to the EU's rules.

On the 30<sup>th</sup> July 2020 the UK set out its approach to transposing the EU circular economy package (CEP) into UK law. The transposition confirms that national waste plans for England will set out the measures the UK will take to recycle 65% of

---

2

[https://publications.parliament.uk/pa/cm5801/cmpublic/Environment/PBC009\\_Environment%20Bill\\_1st-7th\\_Combined\\_17\\_03\\_2020.pdf](https://publications.parliament.uk/pa/cm5801/cmpublic/Environment/PBC009_Environment%20Bill_1st-7th_Combined_17_03_2020.pdf)

3 <https://www.local.gov.uk/sites/default/files/documents/LGA%20briefing%20-%20Environment%20Bill%20-%202R%20HC%20-%200050220.pdf>

municipal waste by 2035 and to have no more than 10% municipal waste going to landfill by 2035.

A policy statement issued jointly by the UK, Welsh, Scottish and Northern Irish Governments said that as the majority of changes required to transpose the CEP are small technical changes or a case of adopting the same wording as EU Directives no formal consultation would take place. The legislation is expected to enter into law in the autumn of 2020.

The EU directives that are affected are: -

- a. Directive 2008/98/EC on waste (the Waste Framework Directive (WFD)), amended by Directive (EU) 2018/851 of 30 May 2018
- b. Directive 94/62/EC on Packaging and Packaging Waste (PPWD), amended by Directive (EU) 2018/852 of 30 May 2018
- c. Directive 1999/31/EC on the Landfill of waste (LFD), amended by Directive (EU) 2018/850 of 30 May 2018

The three remaining Directives amended by the CEP are the End-of-Life Vehicles (ELV) (Directive 2000/53/EC), Batteries and Accumulators and Waste Batteries and Accumulators (BAWBA) (Directive 2006/66/EC) and Waste Electrical and Electronic Equipment (WEEE) (Directive 2012/19/EU). These have all been amended by a single amending, Directive (EU) 2018/849.

### **5.1.1.3 Climate and Biodiversity Emergency**

The South Yorkshire Councils have all declared climate emergencies<sup>4</sup> and are working together with other organisations in the region to establish carbon reduction targets,

The waste minimisation and resource efficiency activities in the SYMWS will contribute to achieving these targets.

### **5.1.1.4 Consultations**

Consultations on matters relating to waste have been delayed due to the pandemic and are some are not now expected until January 2021.

---

<sup>4</sup> **Barnsley**

<https://www.barnsley.gov.uk/services/our-council/reducing-carbon-emissions/>

**Doncaster**

<https://www.teamdoncaster.org.uk/the-commission>

**Rotherham**

<https://moderngov.rotherham.gov.uk/ielistDocuments.aspx?MIId=14709>

**Sheffield**

<https://www.sheffield.gov.uk/home/your-city-council/climate-emergency-response>

There is an open consultation on the waste management plan for England. The consultation commenced on the 20<sup>th</sup> August 2020 and is due to end on 15<sup>th</sup> October 2020. The plan itself focuses on waste arisings and their management and is a high-level plan. Regular review of the waste management plan for England is necessary to fulfil the requirements of the Waste (England and Wales) Regulations 2011.

According to the consultation document it is not the intention to introduce new policies for the management of waste in England. It is however intended to bring all the policies under one umbrella. This will include any policies from

- Resource and Waste Strategy for England
- Clean Growth Strategy
- Industrial Strategy
- Litter Strategy
- UK Plan for Shipments of Wastes
- National Policy Statements for Hazardous Waste
- Renewable Energy Infrastructure

Closed

The Government consulted on the introduction of tax on plastic packaging from the 11<sup>th</sup> March 2020 to the 20<sup>th</sup> August 2020. This consultation was on the introduction of a new tax on plastic packaging from April 2022.

<https://www.gov.uk/government/consultations/plastic-packaging-tax>

## **5.2 Key Activities Completed This Period**

Review of Local Partnership modelling and extension of work to include carbon modelling.

## **5.3 Key Decisions/Support required**

Funding streams for projects to be identified. Decision to be made on the approach to the response to the Waste Management Plan for England. Will individual responses be provided or will a co-ordinated response be required. A response to the consultation should be co-ordinated between waste managers and planning officers.

## **5.4 Key Project Issues & Risks**

The key identified project risks are as follows:

- Insufficient budgets are allocated to allow the work to be undertaken
- There are changes in national government and policy
- There are changes in local government
- Decisions are delayed
- Partners withdraw
- External funding is not available
- Staff resources are not allocated, or a skills gap exists; and

SYMWS – Highlight Report – 9/09/2020  
South Yorkshire Waste Partnership Steering Committee

- Impacts of Brexit.