

# COVID-19 Vaccine update

South Yorkshire & Bassetlaw  
partner and staff update

January 2021



## On target to vaccinate top four priority groups by mid February

Following the approval of the Oxford/AstraZeneca vaccine just 2 weeks ago, the COVID-19 vaccination programme across South Yorkshire and Bassetlaw has already vaccinated thousands of our most vulnerable residents and NHS staff against this awful virus.

We now have over 30 primary care network sites up and running, care home staff and residents have begun to be vaccinated and thousands of NHS and social care staff are being vaccinated as a priority.

We are due to open a large NHS vaccination centre at Sheffield Arena within the next few weeks and early indications are that, subject to vaccine supplies, we are on target to have vaccinated the top four priority groups (estimated to be over 280,000 people) by mid February. See the last page for the priority groups.

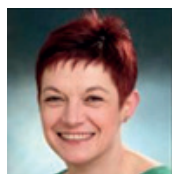


Thanks to the herculean efforts of so many people across our region, as at 14th January 2021, the North East and Yorkshire region is the second highest vaccinator in the country with 433,045 vaccines delivered so far. Almost 50% of those are over 80 year olds and the remainder are front line NHS and social care staff. As we get more local data we will share it for information.

This update gives more detail on the specific aspects of the programme and over the coming weeks we will continue to update on progress.

**Thank you for your ongoing support.**

*Joint Senior Responsible Officers  
South Yorkshire and Bassetlaw Vaccination Programme*



**Kirsten Major**

Chief Executive  
Sheffield Teaching  
Hospitals NHS  
Foundation Trust



**Jackie Pederson**

Accountable Officer  
Doncaster Clinical  
Commissioning  
Group



# Primary care vaccination sites

GP practices in each area across South Yorkshire and Bassetlaw are working together to run and deliver the vaccine programme in the community. Barnsley, Doncaster, Bassetlaw, Rotherham and Sheffield all have GP led vaccination services up and running with over 30 sites currently vaccinating.

Here's the link to all the current vaccination sites, hospital and GP led services. **[www.england.nhs.uk/coronavirus/hospital-hubs-and-local-vaccination-services/](https://www.england.nhs.uk/coronavirus/hospital-hubs-and-local-vaccination-services/)**

You'll see from the site list, that it names a particular GP practice or venue. This means that site is acting as a local vaccination service – people from across the local area will be booked into these sites, not just people registered at that practice.

All the sites are by appointment only, and members of the public aged 80 and over are the current group of people being invited to be vaccinated. You can read more about the eligible groups on the last page of this update. The NHS will contact patients directly with an invitation to book in for a vaccine.



*Ann Duggan gets her vaccination in Doncaster.*

## Care homes

Vaccination of care home residents and staff is also now underway and progressing as a priority. The Primary Care Networks are delivering the vaccination programme within care homes. Further updates on progress will be provided in the next bulletin.

*Jack Woodhouse, 83, at Woodland View nursing home one of the first care home residents to be vaccinated in Sheffield*



## NHS and social care patient facing staff vaccination programme

The availability of the Oxford/AstraZeneca vaccine has also meant that hospitals are now able to switch their focus for the administration of the Pfizer vaccine to their frontline staff vaccination programmes. In South Yorkshire and Bassetlaw these have started in hospitals in Bassetlaw, Barnsley, Doncaster, Rotherham and Sheffield. Uptake has been fantastic, with the staff vaccination clinics filling up as quickly as they become available. For example over 11,000 front line staff have had their first vaccine and thousands more are booked in.

The hospitals will also vaccinate social care staff in patient facing roles. Each of the adult acute hospitals are working with their Local Authority to ensure this is carried out as quickly as possible. The final details on how social care staff book their appointment and what the vaccination venues will be used are just being finalised.



*James Sherwin gets his vaccination.*



# Large-scale vaccination site

As part of the national vaccination programme you will be aware that there will be large-scale vaccination centres across the country. In South Yorkshire and Bassetlaw we are planning to have one of these centres in Sheffield. The centre will be additional capacity to what is being delivered locally by GP practices and in other community venues and so people should not worry that there is an expectation on them to travel to the centre if they live far from it. The plans for the Sheffield site are in the final stages and we expect to be vaccinating from there by the end of January.

The invitations to the large-scale centres are being sent out nationally via a national booking system to people in the eligible priority group (currently the over 80s) and who live within a 45 mile drive of a large scale centre.

The letter includes a website address and a free telephone number to book an appointment at the large scale centres. The letter does however also make it clear that those who have already been contacted by the NHS locally to arrange to have their vaccine at a primary care centre don't need to take further action and can ignore the letter.



The Arena site will be by appointment only and not a walk in service. Anyone who turns up without a pre-booked appointment will not be given a vaccine. The Arena site will operate seven days a week for 12 hours a day. Sheffield Teaching Hospitals as lead provider for the SYB vaccination programme will oversee the staffing for the centre. There has been a fantastic response from NHS staff across the region and volunteers which means staffing is not at this stage envisaged to be an issue. Once a firm opening date is known we will send a further update including opening times.

We will be closely monitoring the vaccination programme progress in South Yorkshire and Bassetlaw and should it be determined that we require extra capacity above that of the GP and community centres and the one large-scale vaccination centre then we will consider additional centres.

## Community pharmacists

This week the NHS announced that vaccinations will begin to be delivered at High Street pharmacies. Boots, Superdrug and several independent stores will be the first of hundreds of community pharmacies to offer vaccinations protecting against Covid-19. Nationally two hundred community pharmacies are due to come online over the next fortnight as more vaccine supplies come on stream by the end of the month. Stores capable of delivering large volumes while allowing for social distancing are initially being selected to give the best geographical spread. People who receive the national booking system letter (see above) will see the pharmacy sites in their area as a choice alongside the large vaccination sites. They can choose to go to either a vaccination centre or a pharmacy service if they are not going to a local primary care site.

Currently there are not any community pharmacy vaccination sites opening in the first wave in South Yorkshire and Bassetlaw but there will be further updates as the programme moves forward.

# Second dose update

Since our last update, the Joint Committee on Vaccination and Immunisation (JCVI) have issued an adjustment in the national COVID-19 vaccination programme, with the advice now to administer second doses of the vaccine up to 12 weeks after the first jab.

**Based on advice from the JCVI the four UK Chief Medical Officers have determined that:**

"...Prioritising the first doses of vaccine for as many people as possible on the priority list will protect the greatest number of at risk people overall in the shortest possible time and will have the greatest impact on reducing mortality, severe disease and hospitalisations and in protecting the NHS and equivalent health services. Operationally this will mean that second doses of both vaccines will be administered towards the end of the recommended vaccine dosing schedule of 12 weeks."

<b>Vaccine efficacy after 1st dose</b>	<b>Pfizer</b>	<b>Oxford AZ</b>
	<b>81-91%</b>	<b>73%</b>

Everyone who has had their first vaccination will be contacted by their practice to attend for their second dose around 12 weeks later. So rest assured everyone will still get their second dose within the required window.

## How can you help?

The most important thing our partners can do to support us at this time is continue to communicate with the public and share the key messages about the vaccination programme. Communication leads in partner organisations are working together to ensure communities are encouraged to attend for vaccination when it is their turn, provide up to date information on the vaccine and ensure hard to reach communities have the information they need in appropriate languages, formats and using different means of communication. Partner organisations will be asked to cascade information as soon as the priority groups expand. Your communications lead will be provided with the information they need and some resources are available now (see overleaf). For more information please contact Julie Phelan, Communications Director, Sheffield Teaching Hospitals on [Julie.phelan5@nhs.net](mailto:Julie.phelan5@nhs.net) who is working with your local communication leads on the programme.

### Key messages:

- If you are invited to receive your vaccination, please take up the offer. When you have arranged an appointment please turn up for it. Please also remember safe distancing, masks and hand hygiene when you come for your appointment.
- Whilst the vaccine will protect those who have it from being very sick, the virus is still being transmitted. We must all continue to adhere to the Hands, Face, Space guidance and limit contact with others as much as possible to prevent further infections.
- Please don't call your GP or hospital, when it is your time to be vaccinated we will call you. This is the largest vaccination programme of modern times and we are only a few weeks into it. We have comprehensive plans in place and you will be contacted when it is your time.
- Please do not turn up to a vaccination site or your GP surgery without an appointment. Only those with booked appointments will receive their vaccination, at all sites. Also please do not come early for your appointment as this will impact on social distancing in some centres.

# Vaccination materials

A range of leaflets are now available to help promote the COVID-19 Vaccination programme, these include leaflets in large print, braille, BSL videos and social media clips for adults with learning disabilities.

These are available from here:

**[www.healthpublications.gov.uk/Home.html](http://www.healthpublications.gov.uk/Home.html)**

Further materials to support public health messaging around COVID-19 and the vaccination programme can be found here:

**[www.coronavirusresources.phe.gov.uk](http://www.coronavirusresources.phe.gov.uk)**



## National Vaccination update

You will likely be aware that the government has committed to providing regular updates on the numbers of people vaccinated. Data for week ending 3rd January is as follows:

As of the 13th January a total of 2,661,850 people had received an NHS vaccination for COVID-19 in England.

Weekly data can be found here:

**<https://www.england.nhs.uk/statistics/statistical-work-areas/covid-19-vaccinations/>**



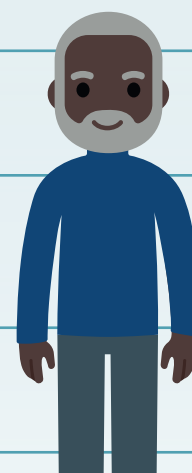


# COVID-19 vaccination

## First phase priority groups



Priority		Risk group
1	80 yrs	Residents in a care home for older adults and Staff working in care homes for older adults
2	75 yrs	All those 80 years of age and over and Frontline health and social care workers
3	70 yrs	All those 75 years of age and over
4	65 yrs	All those 70 years of age and over and Clinically extremely vulnerable individuals (not including pregnant women and those under 16 years of age)
5	60 yrs	All those 65 years of age and over
6	55 yrs	Adults aged 16 to 65 years in an at-risk group*
7	50 yrs	All those 60 years of age and over
8		All those 55 years of age and over
9		All those 50 years of age and over
10		Rest of the population (to be determined)



\* Blood cancer (such as leukaemia, lymphoma or myeloma); diabetes; dementia; a heart problem; a chest complaint or breathing difficulties, including bronchitis, emphysema or severe asthma; a kidney disease; a liver disease, lowered immunity due to disease or treatment (such as HIV infection, steroid medication, chemotherapy or radiotherapy); rheumatoid arthritis, lupus or psoriasis; have had an organ transplant; had a stroke or a transient ischaemic attack (TIA); a neurological or muscle wasting condition; a severe or profound learning disability; a problem with your spleen, eg sickle cell disease, or you have had your spleen removed; are seriously overweight (BMI of 40 and above); are severely mentally ill.

