

# Corporate Parenting Performance report

As at month end: April 2021

**Please note:** Data reports are not dynamic. Although care is taken to ensure data is as accurate as possible every month, delays in data input can result in changes in figures when reports are re-run retrospectively. To combat this at least two individual months data is rerun for each indicator.

#### Document details

**Status:** Issue 1

**Date created:** 10/06/21

**Created by:** Performance & Quality Team

**Contact:** cyps-performance@rotherham.gov.uk



\*DOT - Direction of travel represents the direction of 'performance' since the previous month showing if the number or percentage has gone up or down. Colours have been added to help distinguish better and worse performance with the exceptions of measures that are for information only. Key Below,-

↑↓ - increase/decrease in number/percentage = improvement in performance  
↑↓ - increase/decrease in number/percentage = decline in performance  
→ - number/percentage remained same as previous month

↑ - increase in number/percentage (info measures)  
→ - remained same as previous month (info measures)  
↓ - decrease in number/percentage (info measures)

	NO.	INDICATOR	DATA NOTE (Monthly)	2020 / 21			2021 / 22		GOOD PERF IS	DOT* (Month on Month)	RAG (in month)	Target and Tolerances			YR ON YR PERFORMANCE				LATEST BENCHMARKING				
				Jan-21	Feb-21	Mar-21	Apr-21	YTD				Red	Amber	Target Green	2018/19	2019/20	2020/21	YR ON YR TREND	STAT NEIGH AV.	BEST STAT NEIGH	NAT AVE	TOP QTILE THRESHOLD	RIA 2019/20
ADOPTIONS	10.2	No. of adoptions completed within 12 months of SHOBPA	Count	1	0	1	2	2	High	↑					11	9	6						
	10.3	% of adoptions completed within 12 months of SHOBPA	Percentage	50.0%	0.0%	20.0%	66.7%	66.7%	High	↑					34.4%	31.0%	17.6%						
	10.4	Average number of days between a child becoming Looked After and having a adoption placement (A10)	YTD Average	419.7	426.9	446.6	523.3	-	Low	↑				487<	386.9	391.5	446.6		359.7	310.0	376.0	333.0	360.0
	10.5	Average number of days between a placement order and being matched with an adoptive family (A2)	YTD Average	183.8	189.4	210.6	259.7	-	Low	↑				121<	212.4	146.0	210.6		160.0	91.0	178.0	138.0	167.0

# LOOKED AFTER CHILDREN

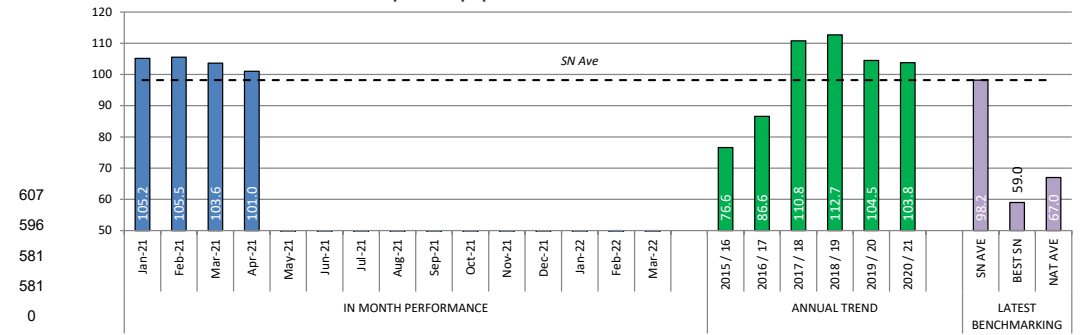
**DEFINITION** Children in care or 'looked after children' are children who have become the responsibility of the local authority. This can happen voluntarily by parents struggling to cope or through an intervention by children's services because a child is at risk of significant harm.

6.2	6.1	6.3	6.4	6.5	6.6	6.7
Rate of children looked after per 10K pop	Number of LAC	Admissions of children looked after (Episodes)	No. of children who have ceased to be LAC (Episodes)	% of children ceased to be LAC due to permanence (Episodes)	Number of SGO's started (Legal Status)	% of children ceased to be LAC due to an SGO

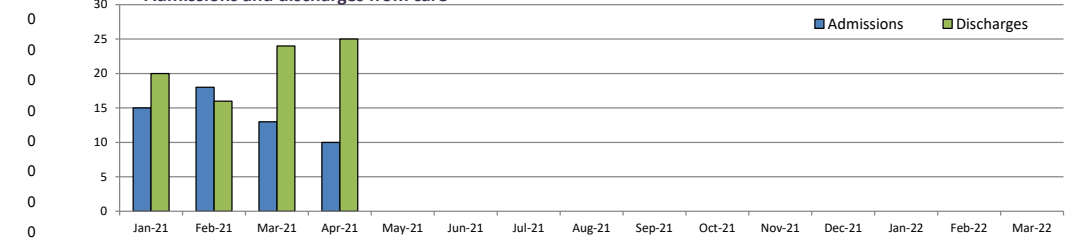
IN MONTH PERFORMANCE	Jan-21	105.2	605	15	20	39.1%	7	21.7%
	Feb-21	105.5	607	18	16	15.4%	3	7.7%
	Mar-21	103.6	596	13	24	39.1%	6	8.7%
	Apr-21	101.0	581	10	25	52.2%	6	30.4%
	May-21							
	Jun-21							
	Jul-21							
	Aug-21							
	Sep-21							
	Oct-21							
	Nov-21							
	Dec-21							
	Jan-22							
	Feb-22							
	Mar-22							

YTD	2021 / 22	-	-	10	25	52.2%	6	30.4%
ANNUAL TREND	2015 / 16	76.6	432	208	192	40.1%	-	-
	2016 / 17	86.6	488	262	215	27.9%	-	9.8%
	2017 / 18	110.8	627	330	194	27.3%	67	8.2%
	2018 / 19	112.7	642	271	254	31.5%	62	13.1%
	2019 / 20	104.5	595	214	259	32.4%	73	16.2%
2020 / 21	103.8	597	186	183	32.8%	42	11.5%	
LATEST BENCHMARKING	SN AVE	98.2						12.3% (2017)
	BEST SN	59.0						22.0% (2017)
	NAT AVE	67.0						12.0% (2017)
	NAT TOP QTILE	-						17.0% (2017)

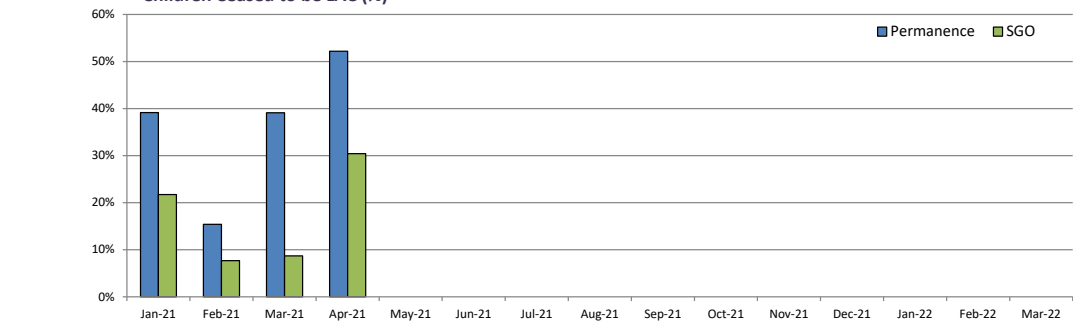
Rate of Looked After Children per 10K pop



Admissions and discharges from care



Children Ceased to be LAC (%)



# LOOKED AFTER CHILDREN - REVIEWS, PLANS & VISITS

## DEFINITION

The purpose of a LAC review meeting is to consider the plan for the welfare of the looked after child and achieve Permanence for them within a timescale that meets their needs. The review is chaired by an Independent Reviewing Officer (IRO). The LA is also responsible for appointing a representative to visit the child wherever he or she is living to ensure that his/her welfare continues to be safeguarded and promoted. The minimum national timescales for visits is within one week of placement, then six weekly until the child has been in placement for a year and the 12 weekly thereafter.

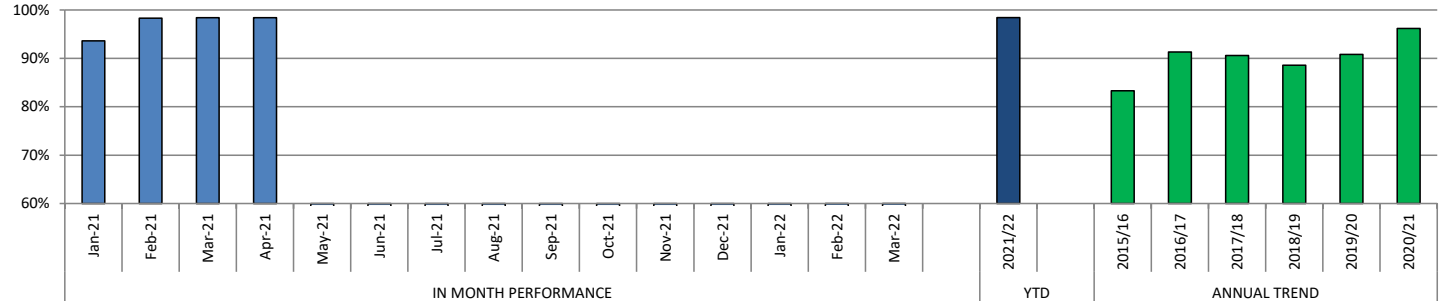
6.8	6.19	6.20
% of LAC cases reviewed within timescales	LAC with an up to date plan	% LAC visits up to date & complete within timescale of National Minimum standard

IN MONTH PERFORMANCE	Jan-21	132 of 141	93.6%	92.0%	564 of 603	93.5%
	Feb-21	117 of 119	98.3%	93.7%	563 of 607	92.8%
	Mar-21	184 of 187	98.4%	95.7%	574 of 602	95.3%
	Apr-21	125 of 127	98.4%	94.4%	562 of 588	95.6%
	May-21					
	Jun-21					
	Jul-21					
	Aug-21					
	Sep-21					
	Oct-21					
	Nov-21					
	Dec-21					
	Jan-22					
	Feb-22					
Mar-22						

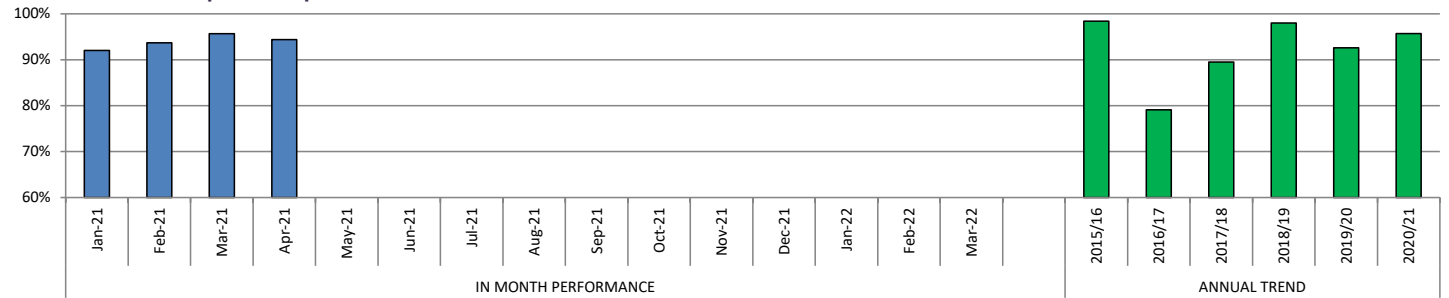
YTD	2021/22	125 of 127	98.4%	-	-	-
-----	---------	------------	-------	---	---	---

ANNUAL TREND	2015/16		83.3%	98.4%		98.1%
	2016/17	652 of 714	91.3%	79.1%		74.0%
	2017/18	1502 of 1658	90.6%	89.5%		97.5%
	2018/19	1668 of 1883	88.6%	98.0%		96.9%
	2019/20	1612 of 1775	90.8%	92.6%		93.4%
	2020/21	1662 of 1728	96.2%	95.7%		95.3%

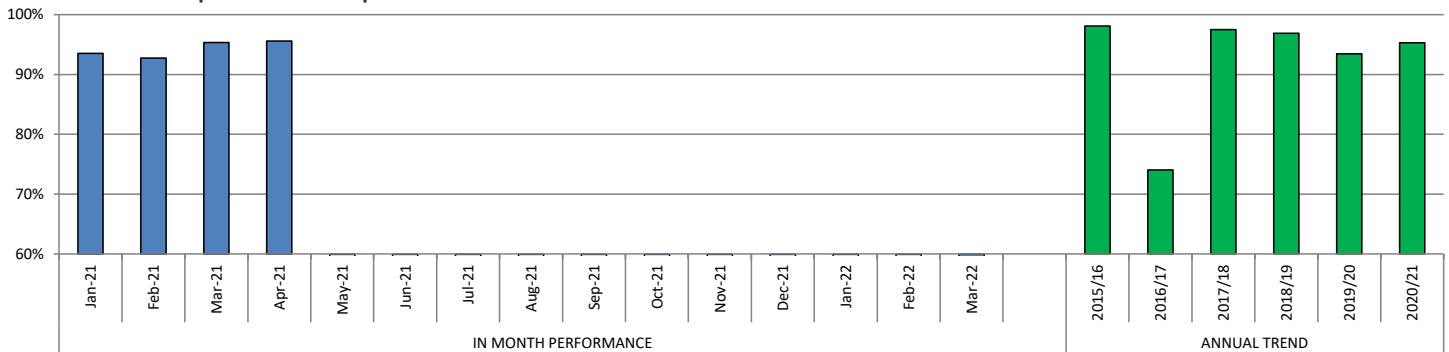
% of LAC cases reviewed within timescales



LAC with an up to date plan



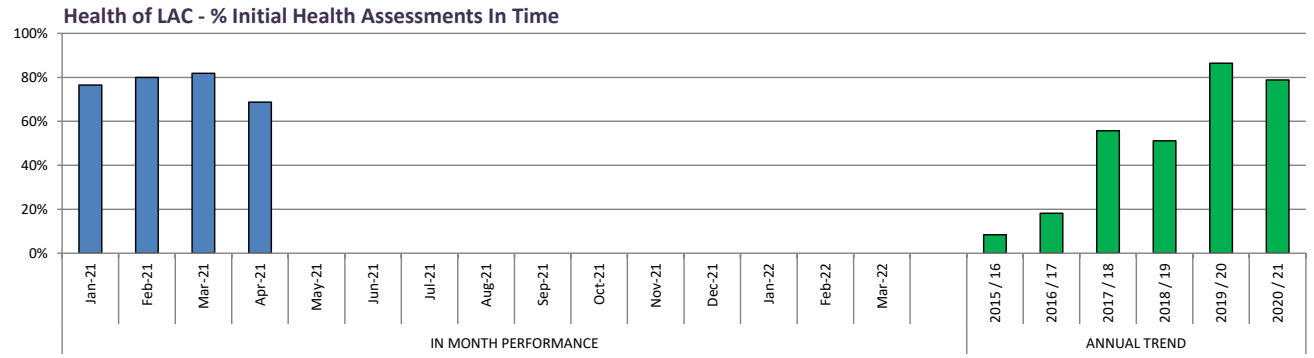
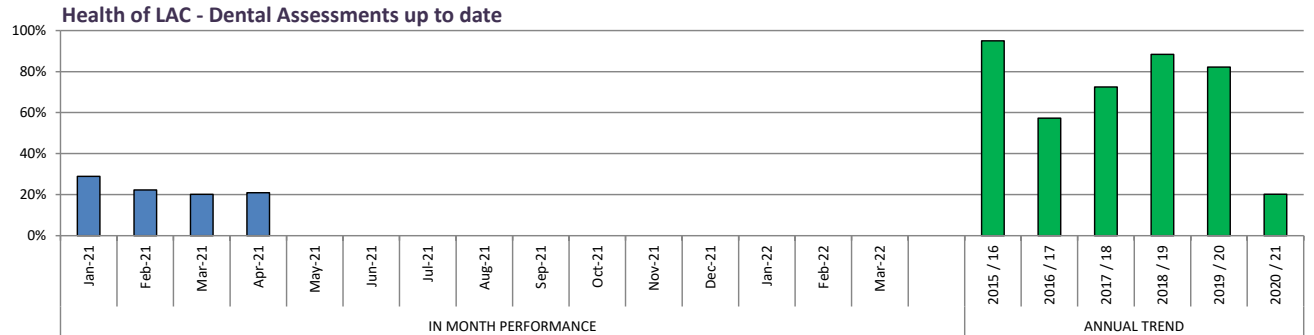
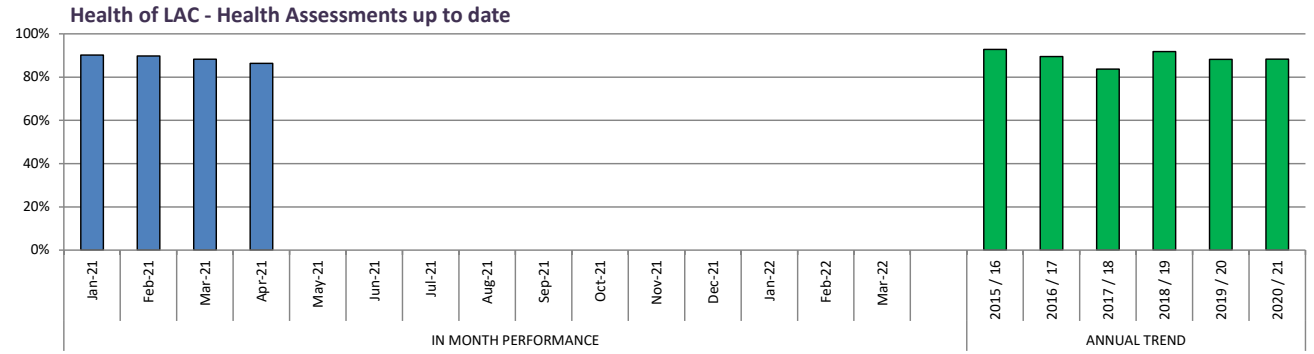
% LAC visits up to date & complete within timescale of National Minimum standard



# LOOKED AFTER CHILDREN - HEALTH

**DEFINITION** Local authorities have a duty to safeguard and to promote the welfare of the children they look after, therefore the local authority should make arrangements to ensure that every child who is looked after has his/her health needs fully assessed and a health plan clearly set out.

		6.10	6.11	6.12	
		Health of LAC - Health Assessments up to date	Health of LAC - Dental Assessments up to date	Health of LAC - No. Initial Health Assessments In Time	Health of LAC - % Initial Health Assessments In Time
<b>IN MONTH PERFORMANCE</b>	Jan-21	90.2%	28.9%	13 of 17	76.5%
	Feb-21	89.8%	22.3%	12 of 15	80.0%
	Mar-21	88.3%	20.2%	9 of 11	81.8%
	Apr-21	86.3%	20.9%	11 of 16	68.8%
	May-21				
	Jun-21				
	Jul-21				
	Aug-21				
	Sep-21				
	Oct-21				
	Nov-21				
	Dec-21				
Jan-22					
Feb-22					
Mar-22					
<b>YTD</b>	2021 / 22	-	-	11 of 16	68.8%
<b>ANNUAL TREND</b>	2015 / 16	92.8%	95.0%		8.4%
	2016 / 17	89.5%	57.3%		18.2%
	2017 / 18	83.7%	72.5%		55.7%
	2018 / 19	91.8%	88.4%	136 of 266	51.1%
	2019 / 20	88.2%	82.2%	172 of 199	86.4%
2020 / 21	88.3%	20.2%	119 of 151	78.8%	
<b>LATEST BENCHMARKING</b>	SN AVE				
	BEST SN				
	NAT AVE				
	NAT TOP Q TILE				



# LOOKED AFTER CHILDREN - EDUCATION

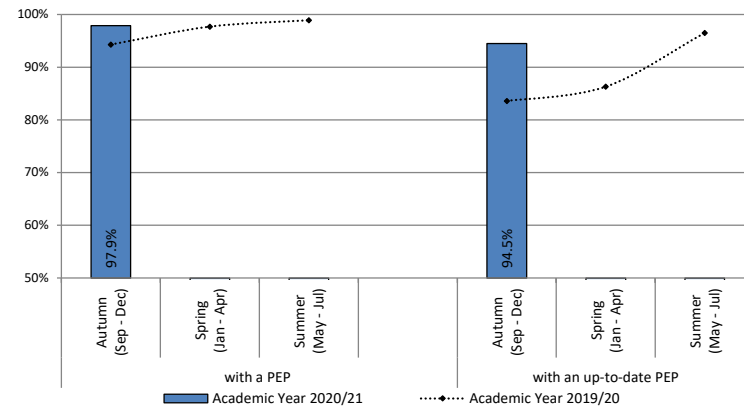
## DEFINITION

A personal education plan (PEP) is a school based meeting to plan for the education of a child in care. The government have made PEPs a statutory requirement for children in care to help track and promote their achievements. (PEPs are now in place for LAC aged two to their 18th birthday.)

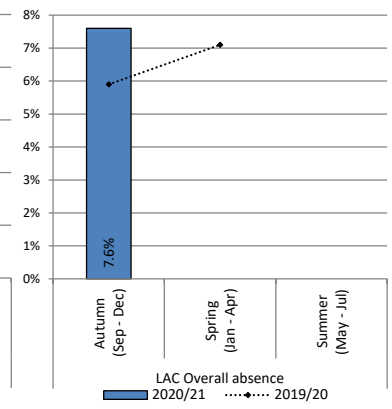
**Data Note:** All of the below information has now been moved to the eGov system and the Virtual Heads are currently working with the Performance Team and eGov colleagues to create and validate reports which may cause some changes in performance moving forward.

		6.13	6.14	6.15	6.16	6.17	6.18
		% LAC with a Personal Education Plan (Termly)	% LAC with up to date Personal Education Plan (Termly)	LAC Overall absence - % of sessions lost due to absence	% of LAC who are classed as persistent absentees (Missing 10%+ sessions)	% of LAC with at least one fixed term exclusion	% of LAC on reduced timetable arrangements (All LAC)
IN MONTH PERFORMANCE	Autumn Term (2020/21)	97.9%	94.5%	7.6% (unvalidated due to system changes)	22.6% (unvalidated due to system changes)	4.0% (unvalidated due to system changes)	tbc
	Spring Term (2020/21)						
	Summer Term (2020/21)						
YTD	2020/21	-	-	-	-	-	-
ANNUAL TREND (ACADEMIC YEAR)	2014/15	76.0%	-	5.0%	11.7%	11.8%	-
	2015/16	97.8%	-	4.1%	12.2%	13.1%	-
	2016/17	97.0%	98.9%	5.7%	13.3%	15.5%	-
	2017/18	93.6%	97.4%	4.7%	11.7%	12.5%	-
	2018/19	97.5%	95.0%	4.6%	8.6%	tbc	-
	2019/20	98.9%	96.5%	not available	not available	not available	-
LATEST BENCHMARKING	SN AVE	-	-	4.3%	10.0%	13.2%	-
	BEST SN	-	-	2.9%	6.3%	10.6%	-
	NAT AVE	-	-	4.7%	10.9%	11.7%	-
	NAT TOP QTILE	-	-	4.0%	9.2%	10.0%	-

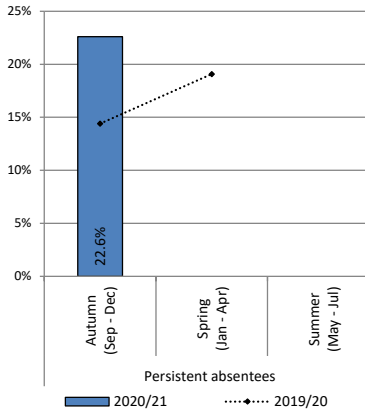
**% of LAC with a PEP & % with an up-to-date PEP**



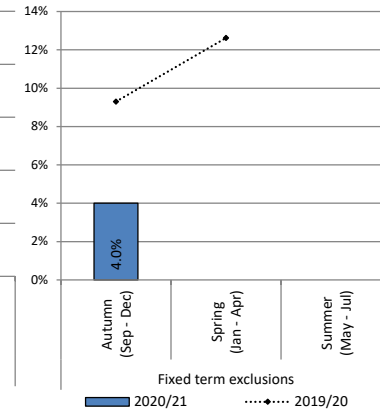
**% of sessions lost due to absence**



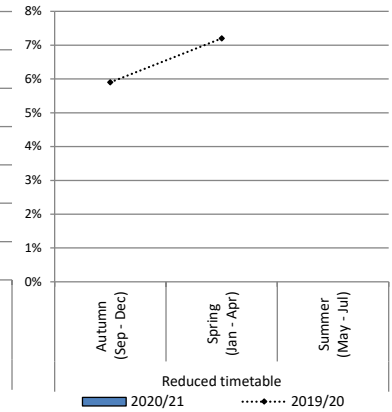
**% of LAC persistent absentees**



**% of LAC with a fixed term exclusion**



**% of LAC on a reduced timetable**



# LOOKED AFTER CHILDREN - PLACEMENTS

**DEFINITION** A LAC placement is where a child has become the responsibility of the local authority (LAC) and is placed with foster carers, in residential homes or with parents or other relatives.

**SIGNIFICANT CHANGES / CONCERNS**

At the end of March 21, the percentage of children and young people experiencing long term placement stability remained high with 69.2% of long-term LAC having a stable placement for at least 2 years. This is an increase on 2019/20 (62.1%) and is the highest, it has been since yearend 2015/16 (72.7%). Performance is also above the latest stat neighbour (68.5%) and national averages (69.0%). This is a really positive outcome in relation to the pressure of the COVID-19 pandemic on placements and is a testament to the work done by social workers, the SSW's therapeutic team and virtual school to maintain placement stability.

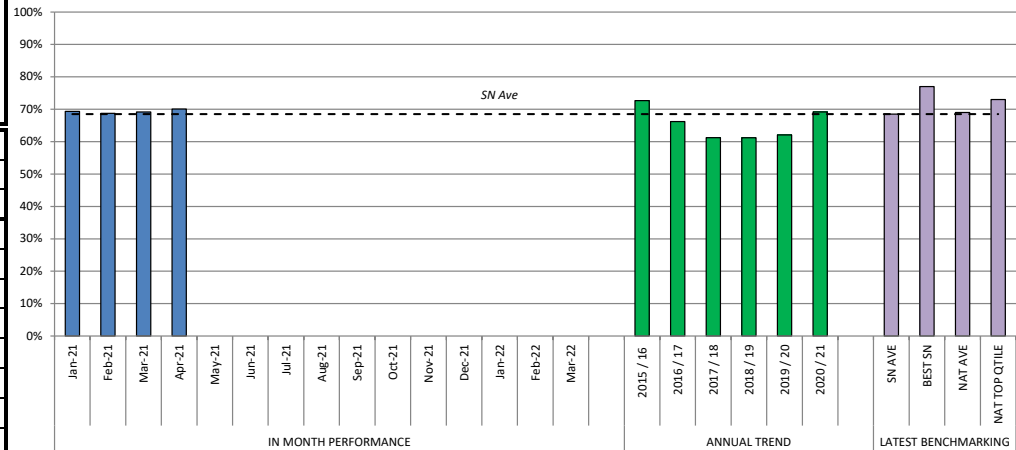
2020/21 has seen a positive decline in the percentage of children having 3 or more placements in the last rolling 12 months to 8.9% (53/597) which is below the 2019/20 yearend performance (11.1%) and the latest stat neighbour (10.0%) and national averages (10.0%). This had been gradually increasing since September 20 to 10.1% (61/602) in January 21 and the fluctuation in performance reflects some of the placement instability brought by the COVID-19 pandemic and is further complicated by a challenge around the placement availability for some of the older and more complex LAC. Joint work between commissioning, LAC service and provider services continues to support the development of local and skilled placements.

The percentage of children in a family-based placement has been fairly consistent throughout the year with the majority of months having between 81-82%. At the end of March 21 this had reached 81.1% which a slight decline on 2019/20 (81.5%). There continues to be positive foster recruitment inhouse but balanced against a number of foster carers resigning. As above recruitment, retention, and the development of inhouse foster carers remains a key area focus. The number of LAC in commissioned placements also showed a positive reduction this year to 50.3%.

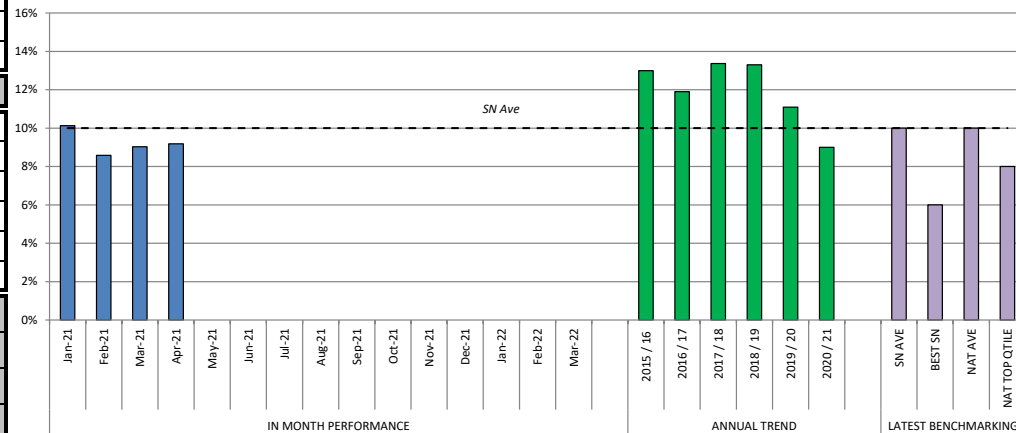
Date Note [March 20]: External Fostering numbers are now report direct from Liquid Logic.

		8.1	8.2	8.3	8.4	8.5
		Long term LAC placements stable for at least 2 years	LAC who have had 3 or more placements - rolling 12 mth	% of LAC in a family Based setting (includes living with parents)	% of LAC placed with parents or other with parental responsibility (P1)	LAC in a Commissioned Placement (External Fostering & Residential)
IN MONTH PERFORMANCE	Jan-21	163 of 235 69.4%	61 of 602 10.1%	80.6%	5.1%	305 of 605 50.4%
	Feb-21	165 of 240 68.8%	52 of 606 8.6%	80.5%	4.0%	302 of 607 49.8%
	Mar-21	166 of 240 69.2%	54 of 598 9.0%	79.9%	4.2%	300 of 596 50.3%
	Apr-21	171 of 244 70.1%	54 of 588 9.2%	80.3%	4.1%	305 of 581 52.5%
	May-21					
	Jun-21					
	Jul-21					
	Aug-21					
	Sep-21					
	Oct-21					
	Nov-21					
	Dec-21					
	Jan-22					
Feb-22						
Mar-22						
YTD	2021 / 22	-	-	-	-	-
ANNUAL TREND	2015 / 16	109 of 150 72.7%	56 of 431 13.0%	-	-	188 of 431 43.6%
	2016 / 17	96 of 145 66.2%	58 of 488 11.9%	81.1%	5.3%	211 of 488 43.2%
	2017 / 18	90 of 147 61.2%	83 of 621 13.4%	81.0%	4.3%	315 of 624 50.5%
	2018 / 19	90 of 147 61.2%	85 of 638 13.3%	81.9%	7.2%	336 of 642 52.3%
	2019 / 20	126 of 203 62.1%	66 of 595 11.1%	81.5%	5.4%	309 of 595 51.9%
2020 / 21	166 of 240 69.2%	54 of 598 9.0%	79.9%	4.2%	300 of 597 50.3%	
LATEST BENCHMARKING	SN AVE	68.5%	10.0%			
	BEST SN	77.0%	6.0%			
	NAT AVE	69.0%	10.0%			
	NAT TOP QTILE	73.0%	8.0%			

% long term LAC placements stable for at least 2 years



% LAC who have had 3 or more placements - rolling 12 months





# FOSTERING

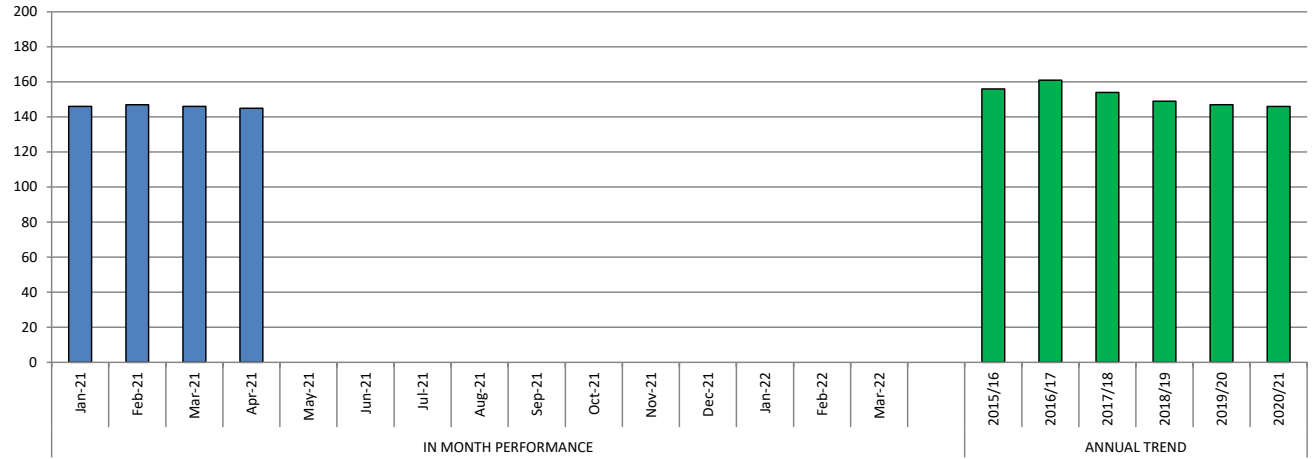
## DEFINITION

A foster care family provide the best form of care for most Looked after children. Rotherham would like most of its children to be looked after by its own carers so that they remain part of their families and community .

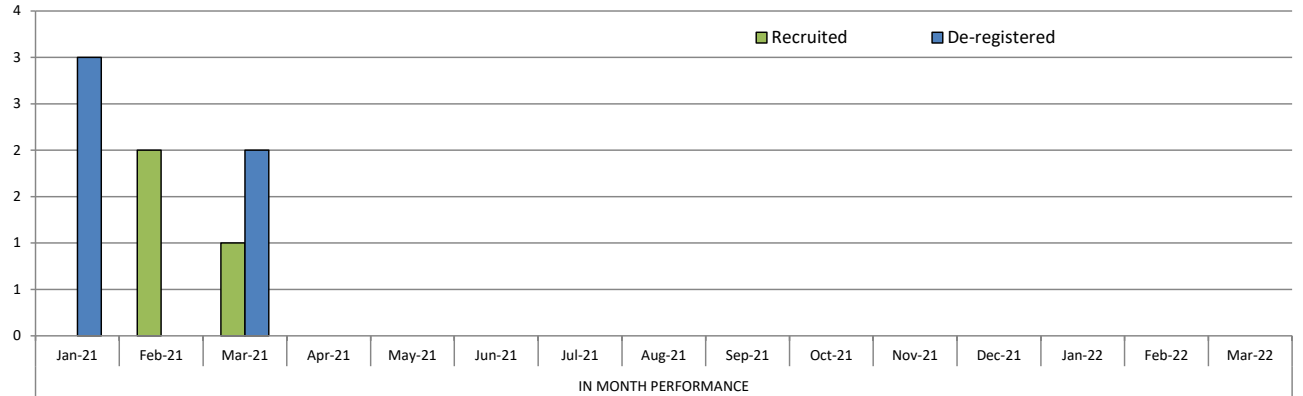
	9.1	9.2	9.3	9.4	9.5
	Number of LAC in a Fostering Placement (excludes relative/friend)	% of total LAC in a Fostering Placement (excludes relative/friend)	Number of Foster Carers (Households)	Number of Foster Carers Recruited (Households)	Number of Foster Carers De-registered (Households)

IN MONTH PERFORMANCE	Jan-21	386	63.8%	146	0	3
	Feb-21	396	65.2%	147	2	0
	Mar-21	391	65.6%	146	1	2
	Apr-21	388	66.8%	145	0	0
	May-21					
	Jun-21					
	Jul-21					
	Aug-21					
	Sep-21					
	Oct-21					
	Nov-21					
	Dec-21					
	Jan-22					
	Feb-22					
Mar-22						
YTD	2021/22	-	-	-	0	0
ANNUAL TREND	2015/16	-	-	156	13	16
	2016/17	353	-	161	32	22
	2017/18	414	64.5%	154	16	25
	2018/19	427	66.5%	149	11	21
	2019/20	405	68.1%	147	18	20
	2020/21	391	65.5%	146	21	21

### Number of Foster Carers



### Fostering Recruitment & De-registrations



# ADOPTIONS

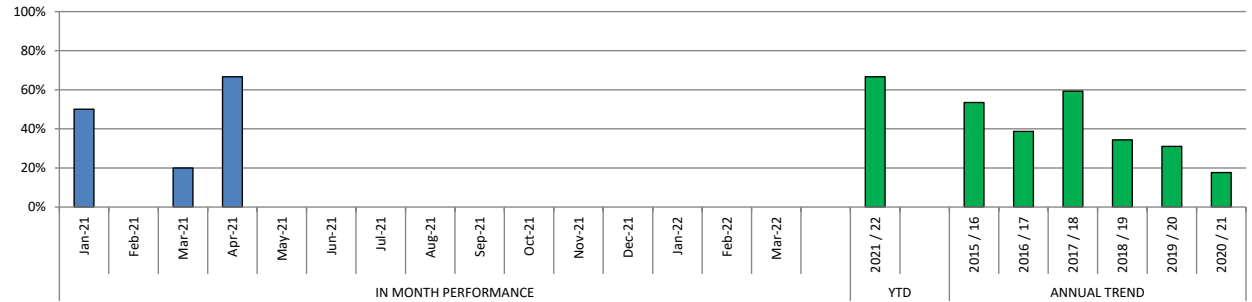
## DEFINITION

Following a child becoming a LAC, it may be deemed suitable for a child to become adopted which is a legal process of becoming a non-biological parent. The date it is agreed that it is in the best interests of the child that they should be placed for adoption is known as their 'SHOBPA'. Following this a family finding process is undertaken to find a suitable match for the child based on the child's needs, they will then be matched with an adopter(s) followed by placement with their adopter(s). This adoption placement is monitored for a minimum of 10 weeks and assessed as stable and secure before the final adoption order is granted by court decision and the adoption order is made. Targets for measures A1 and A2 are set centrally by government office.

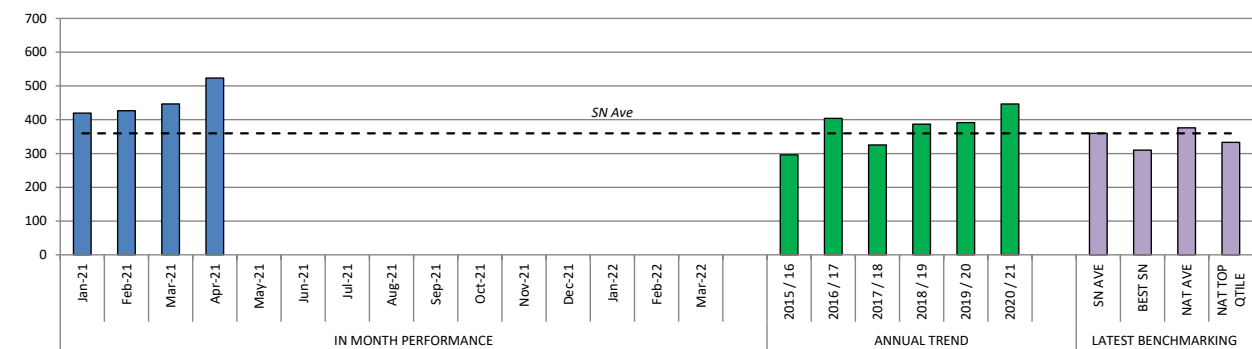
Data Note: Performance is taken from a manual tracker updated in service as not all of the data is currently recorded on LCS.

		10.1	10.2	10.3	10.4	10.5
		Number of adoptions	Number of adoptions completed within 12 months of SHOBPA	% adoptions completed within 12 months of SHOBPA	Av. No. days between a child becoming LAC & having a adoption placement (A1) (ytd. ave.)	Av. No. days between placement order & being matched with adoptive family (A2) (ytd. ave.)
IN MONTH PERFORMANCE	Jan-21	2	1	50.0%	419.7	183.8
	Feb-21	1	0	0.0%	426.9	189.4
	Mar-21	5	1	20.0%	446.6	210.6
	Apr-21	3	2	66.7%	523.3	259.7
	May-21					
	Jun-21					
	Jul-21					
	Aug-21					
	Sep-21					
	Oct-21					
	Nov-21					
	Dec-21					
	Jan-22					
	Feb-22					
	Mar-22					
YTD	2021 / 22	3	2	66.7%	-	-
ANNUAL TREND	2015 / 16	43	23	53.5%	296.0	136.0
	2016 / 17	31	12	38.7%	404.0	232.9
	2017 / 18	27	16	59.3%	325.3	124.8
	2018 / 19	32	11	34.4%	386.9	212.4
	2019 / 20	29	9	31.0%	391.5	146.0
2020 / 21	34	6	17.6%	446.6	210.6	
LATEST BENCHMARKING	SN AVE				359.7	160.0
	BEST SN				310.0	91.0
	NAT AVE				376.0	178.0
	NAT TOP QTILE				333.0	138.0

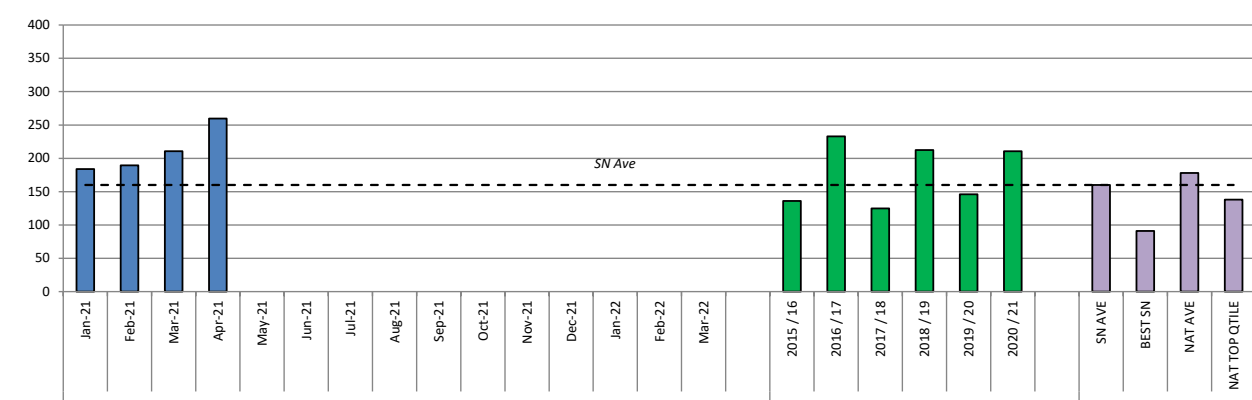
% adoptions completed within 12 months of SHOBPA



Av. No. days between a child becoming LAC & having a adoption placement (A1) - Rolling Year (low is good)



Av. No. days between placement order & being matched with adoptive family (A2) - Rolling Year (low is good)



\*Annual Trend relates to current reporting year April to Mar - not rolling year

\*\*adoptions have a 28 day appeal period so any children adopted in the last 28 days are still subject to appeal

# CARE LEAVERS

## DEFINITION

A care leaver is defined as a person aged 25 or under, who has been looked after away from home by a local authority for at least 13 weeks since the age of 14; and who was looked after away from home by the local authority at school-leaving age or after that date. Suitable accommodation is defined as any that is not prison or bed and breakfast.

	7.1	7.2	7.3	7.4	7.5
	Number of care leavers	% of eligible Care Leavers with a pathway plan	% of eligible Care Leavers with up to date pathway plan	% of care leavers in suitable accommodation	% of care leavers in employment, education or training

IN MONTH PERFORMANCE	Jan-21	328	91.7%	76.8%	96.0%	63.4%
	Feb-21	312	92.3%	83.9%	97.4%	65.4%
	Mar-21	319	91.8%	82.7%	98.4%	64.9%
	Apr-21	315	92.4%	81.2%	98.1%	65.1%
	May-21					
	Jun-21					
	Jul-21					
	Aug-21					
	Sep-21					
	Oct-21					
	Nov-21					
	Dec-21					
	Jan-22					
	Feb-22					
	Mar-22					

YTD	2021/22	-	-	-	-	-
-----	---------	---	---	---	---	---

ANNUAL TREND	2015/16	197	69.8%	-	96.5%	68.0%
	2016/17	223	99.3%	-	97.8%	62.9%
	2017/18	255	94.4%	81.5%	94.5%	62.4%
	2018/19	298	87.4%	82.0%	93.6%	62.8%
	2019/20	313	94.2%	73.1%	93.0%	59.7%
	2020/21	319	91.8%	82.7%	98.4%	64.9%

LATEST BENCHMARKING	SN AVE				86.6%	56.0%
	BEST SN				94.0%	73.0%
	NAT AVE				85.0%	51.0%
	NAT TOP Q TILE				92.0%	59.0%

