

# ROTHERHAM GUIDANCE TO SUPPORT THE DECRIMINALISATION FOR LOOKED AFTER & LEAVING CARE YOUNG PEOPLE

This guidance sets out the agreed roles of Rotherham Council, partners and all adults involved in the care of you in reducing any involvement in crime.

## THE REASONS FOR THIS GUIDANCE ARE TO

- # Lower the number of young people who are looked after from being criminalised;
- # To help stop you from getting involved with crime;
- # And help you move towards a more brighter future.



## HERE'S THE 5 KEY POINTS OF THE GUIDANCE



### DIVERSION

- # We will work with you and your family to help stop you from being involved in crime
- # We will help you understand possible consequences of your actions.

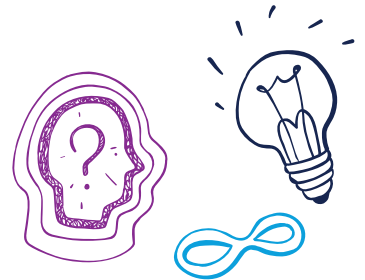
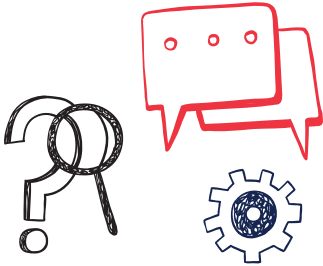


### CHILDREN & YOUNG PEOPLE

- # We will recognise your experiences and situations within care
- # We will support you to understand what is happening and help you through everything.

### LISTENING TO YOU

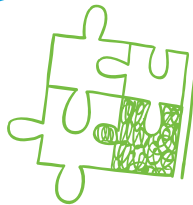
- # We will listen to your story, act on what you tell us and learn from you
- # Your voice is important to **all our** work!



### BREAKING THE CYCLE

We will help you to:

- # Understand and value yourself and your own self worth
- # Provide Access to opportunities to help you achieve your goals
- # Feel a valued person with education, work and good friendships.



### IS OUR RESPONSE GOOD ENOUGH FOR MY CHILD?

Rotherham Council share a responsibility to you to ensure we always:

- # Advocate for you
- # Treat you fairly and with respect
- # Make sure the help you receive is the excellent quality we expect for our own children.



For more information and support please contact your Personal Advisor or Social Worker

[www.rotherham.gov.uk](http://www.rotherham.gov.uk)