

Suicide Prevention Update

28th June 2023

Ruth Fletcher-Brown
Public Health Specialist

Partnership Working

In England, responsibility for suicide prevention action plans sits with local government but this cannot be achieved without working with partners. At Place RMBC work with:

Place

- People with living experience
- South Yorkshire Police
- NHS SY ICB (Rotherham)
- Rotherham NHS Foundation Trust
- RDASH
- Rotherham Samaritans & other Voluntary and Community Sector organisations
- Rotherham United Community Trust

Partnership Working

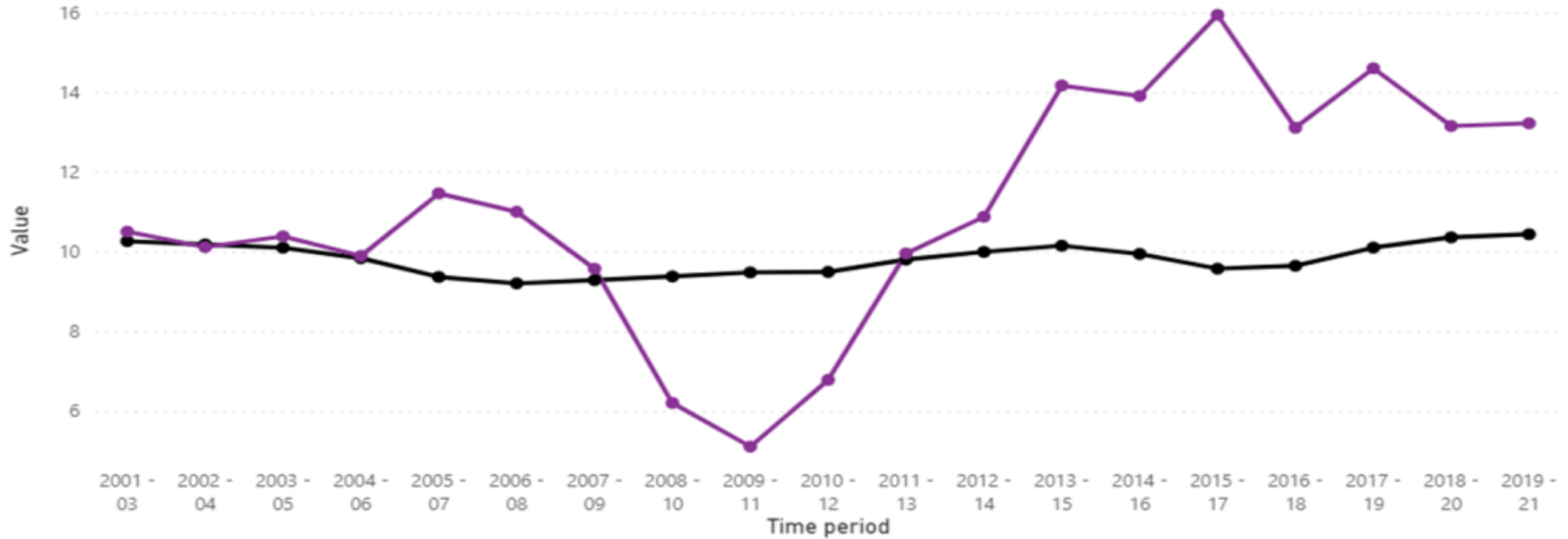
South Yorkshire ICB

- People with living experience
- Public Health Leads for all 4 Local Authorities
- NHS SY ICB
- Acute Trusts
- Mental Health Trusts
- SYP & British Transport Police
- Yorkshire Ambulance Service
- Office of Health Improvement and Disparities (OHID)
- Primary Care

Rotherham

Suicide rate, directly standardised rate per 100,000., Rotherham and England, persons, 2001-03 to 2019-21

Area Name ● England ● Rotherham



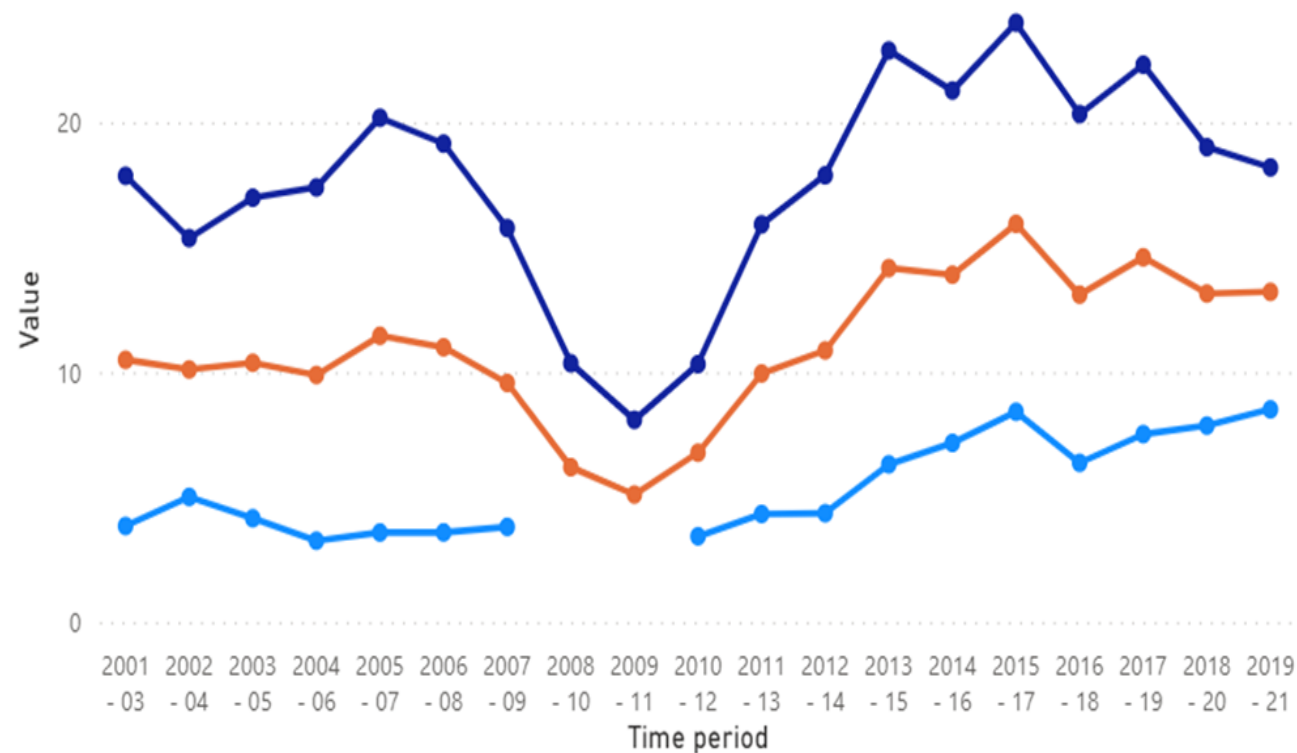
Area Name	2006 - 08	2007 - 09	2008 - 10	2009 - 11	2010 - 12	2011 - 13	2012 - 14	2013 - 15	2014 - 16	2015 - 17	2016 - 18	2017 - 19	2018 - 20	2019 - 21
England	9.20	9.28	9.38	9.48	9.49	9.80	9.99	10.15	9.94	9.57	9.64	10.10	10.36	10.43
Rotherham	11.00	9.57	6.20	5.11	6.78	9.95	10.88	14.17	13.91	15.94	13.11	14.60	13.15	13.22

<

>

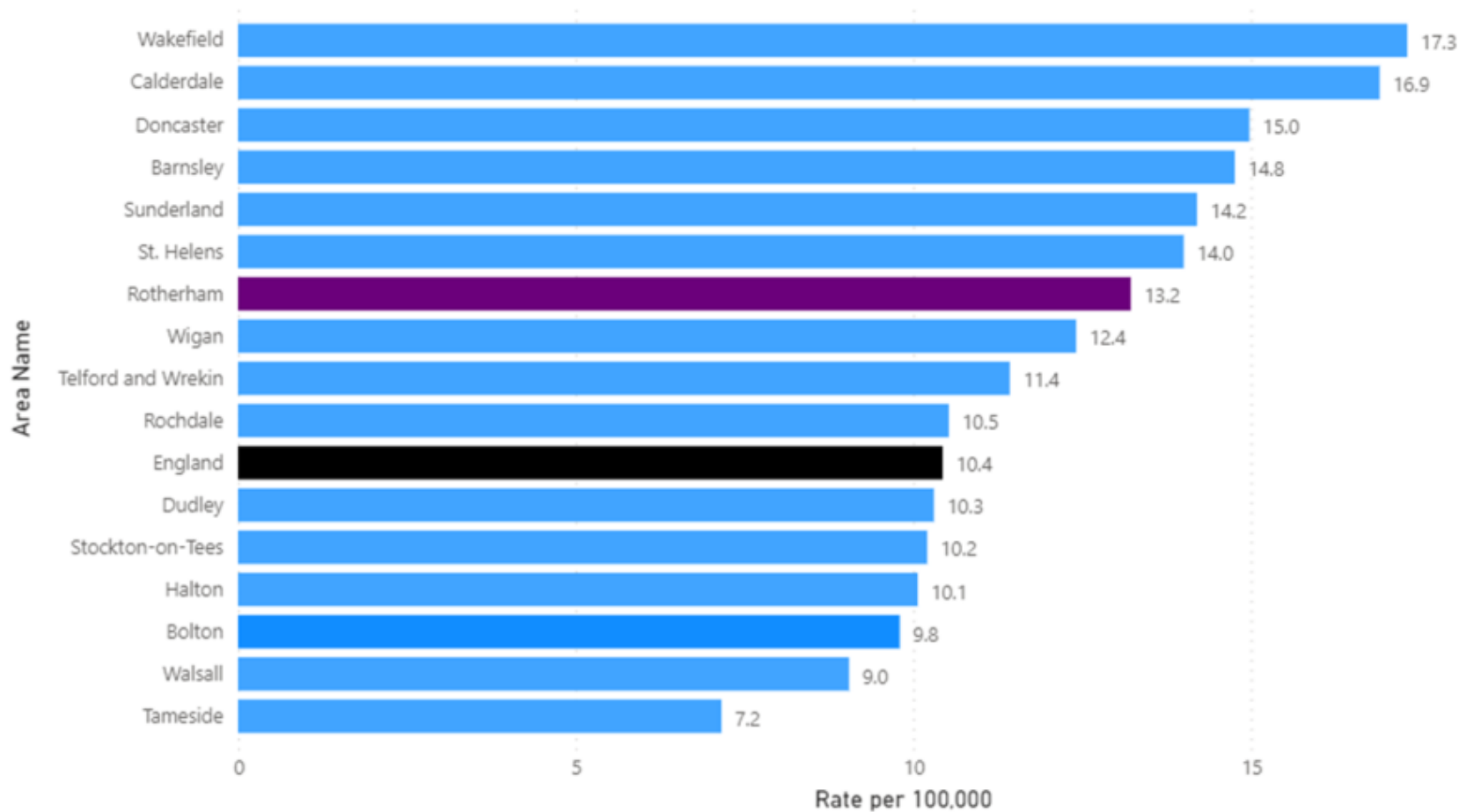
Suicide rate, directly standardised rate per 100,000., Rotherham, 2001-03 to 2019-21

Sex ● Female ● Male ● Persons



Time period	Female	Male	Persons
2001 - 03	3.85	17.86	10.50
2002 - 04	5.01	15.37	10.11
2003 - 05	4.16	16.99	10.38
2004 - 06	3.26	17.40	9.89
2005 - 07	3.59	20.19	11.46
2006 - 08	3.59	19.15	11.00
2007 - 09	3.81	15.77	9.57
2008 - 10		10.36	6.20
2009 - 11		8.10	5.11
2010 - 12	3.44	10.32	6.78
2011 - 13	4.33	15.92	9.95
2012 - 14	4.36	17.88	10.88
2013 - 15	6.32	22.88	14.17
2014 - 16	7.17	21.28	13.91
2015 - 17	8.42	23.99	15.94
2016 - 18	6.38	20.33	13.11
2017 - 19	7.52	22.31	14.60
2018 - 20	7.87	19.01	13.15
2019 - 21	8.52	18.20	13.22

Suicide rate, directly standardised rate per 100,000., Rotherham and CIPFA nearest neighbours, persons, 2019-21



What's working well- Rotherham

- New Be the One film launched September 2022
- Continued promotion of Place Guidance document for staff and volunteers on responding to people at risk of suicide
- 309 frontline staff and volunteers have attended suicide prevention, self harm and mental health awareness training in 22/23
- Suicide Awareness session delivered for primary care in March 2023
- Suicide Awareness session in Safeguarding Awareness week, November 2022
- Distribution of 'Walk with Us' resource to all schools (124) , colleges, early years, cyp services, voluntary and community organisations (70) and all childcare providers
- Early Help delivery of self harm awareness sessions for parents and carers
- Early Intervention and prevention work- as evidenced in the Prevention Concordat application
- Joint working with domestic abuse colleagues
- Peer to peer support groups (Survivors of Bereavement by Suicide, Andy's Man Club and ASK)
- ICB Rotherham commissioning Qwell, the online mental health platform for adults

What's working well- South Yorkshire

- Strong partnership working- all 4 LAs, SYP, NHS and Voluntary and Community Sector
- Second memorial event for families bereaved by suicide in December 2022
- Survivors of Bereavement by Suicide groups (SOBS) in all 4 LA areas
- Real Time Surveillance including work with Yorkshire Ambulance Service
- Reducing access to means
- Joint working on themes and addressing the needs of vulnerable and at risk groups.
- Launch of 'Walk with Us' toolkit. Winner in the LGC Award Public/Public Partnership category.



What are we worried about

- Increasing pressure on individuals and families
- Support for people who have attempted suicide
- Yorkshire Ambulance Data for SY data shows that the anxiety is the highest presenting final working impression
- Rotherham's response to the NICE guidance in relation to self harm
- Capacity for comms and engagement activity
- Support for peer to peer support groups going forwards
- Changes to the SY Real Time Surveillance System means that the onus is on staff from across the partnership to promote Amparo
- Launch of the Attempted Suicide Prevention service

What needs to happen next and when

- Partners to review the Traumatic Bereavement Pathway for children and young people- May 2023
- Further specific actions to address needs of vulnerable and at risk groups- specifically transitions
- Launch of the Attempted Suicide Prevention service- Autumn 2023
- There have been 412 referrals to the ZSA training through the Be the One website to date. Further promotion of Zero Suicide Alliance Training- ongoing
- Targeted work on themes and vulnerable groups identified through real time data- ongoing
- Promotion of mental health support to children, young people and adults in Rotherham- ongoing
- Targeted Comms campaigns as part of Be the One- summer 2023
- Review action plan in light of the anticipated national strategy- Summer/Autumn 2023