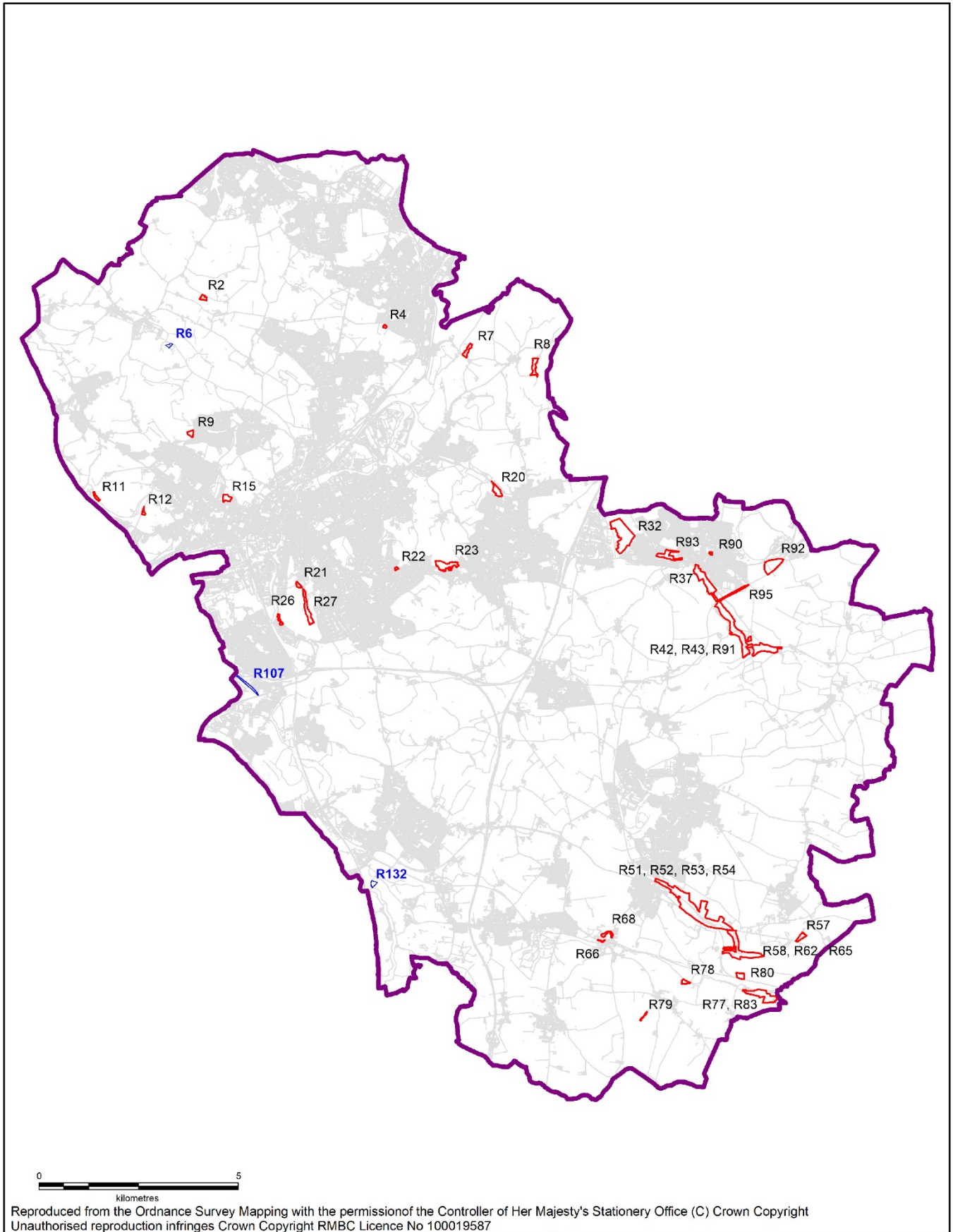


Rotherham Regionally Important Geological Sites Series Update
Appendix 2 Rotherham Local Geological Sites including Regionally Important Geological Sites Series 2024



Existing RIGS Boundary
 New RIGS Boundary
 Produced: 05 June 2024

Update to the Rotherham Regionally Important Geographical Sites

Rotherham Metropolitan Borough Council
 Planning Policy Team
 Riverside House
 Main Street
 Rotherham S60 1AE

Rotherham Regionally Important Geological Sites Series Update
Appendix 2 Rotherham Local Geological Sites including Regionally Important Geological Sites Series 2024

Key to Rotherham Local Geological Sites including Regionally Important Geological Sites Series 2024

RIGS Series 2024	
R2	Hoover Plantation
R4	Hermit Hill Quarry
R7	Hooton Roberts Quarries
R8	Hooton Cliff
R9	Shepherd's Plantation
R11	Thundercliffe Grange (Grange Hall)
R12	Grange Moor Quarry
R15	Bradgate Brick Pits
R20	Silverwood Colliery (Silverwood Quarry)
R21	Boston Park
R22	Great Bank
R23	Brecks Quarries
R26	Canklow Meadows (formerly Brinsworth Roundabout)
R27	Canklow Woods
R32	Maltby Brick Works
R37	Wood Lee Common
R42, R43, R91	Roche Abbey and Nor Wood Caves
R51- R54	Anston Stones Wood
R57	Deep Carrs Quarry
R58, R62, R65	R58 Lindrick Dale, R65 Monk Bridge and R62 Wood Mill
R66	Red Hill Quarry
R68	Kiveton Lodge (2)
R77, R83	Shire Oaks Quarry and Turnerwood Quarry
R78	Hawks Wood Quarry
R79	Slay Pit Lane Quarry
R80	Fan Field Quarry
R90	Herne Hill Caves
R92	Maltby Wood Cave
R93	School Cave, Maltby
R95	Mill Farm railway cutting
R6	Temple Hill Plantation *
R107	Tinsley Marshalling Yard *
R132	Brook House West Quarry *

*New Regionally Important Geological Sites endorsed by the Rotherham Local Geological Sites Panel in 2024 see accompanying location map (new sites shown in blue).