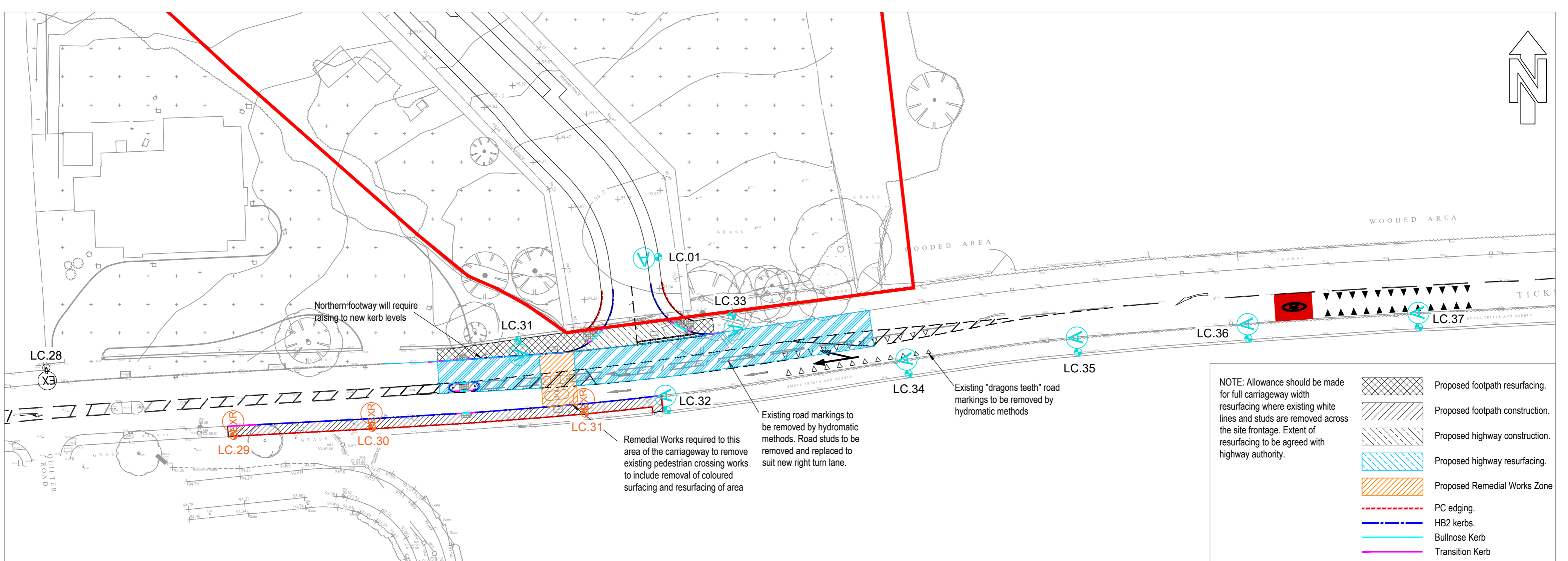


S278 GA
(SCALE 1:500)



S278 RED LINE BOUNDARY
(SCALE 1:500)



S278 SURFACES AND KERBING
(SCALE 1:500)

REV	DESCRIPTION	SIG	CHK	DATE
P01	First issue.	RJ	CH	27.02.24
P02	Updated to suit RMBC S278 & RSA Comments.	AT	CH	22.04.24
P03	Footway extents amended	DAB	CH	25.06.24
P04	Street lighting & drainage shown. RMBC 2nd submission comments	RJ	CH	10.07.24

CD	REV	TYPE	DESCRIPTION
10	1	1	POSITION OF 10M LIGHTING COLUMN WITH 4R POST TOP MOUNTED HIGHWAY DIAMOND (HWD4) 40 LED 800mA N1 LENS MOUNTED AT 0 DEGREES TILT UNLESS OTHERWISE STATED.
2	1	1	EXISTING LIGHTING COLUMN AND LANTERN TO REMAIN.
3	1	1	EXISTING LIGHTING COLUMN AND LANTERN TO BE REMOVED OFF SITE TO TIP.

HOMES BY HONEY

MALTBY

S278 LAYOUT

Eastwood
CONSULTING ENGINEERS

St Andrew's House
23 Kingfield Road
Sheffield, S11 9AS

T: 0114 255 4554
E: mail@eastwoodce.com
eastwoodce.com

ECE PROJECT No: 48389 SCALE AT A1 STATUS: S0 SUITABLE FOR: Initial

48389 - ECE - XX - XX - DR - C - 0050 P04