

# SAFER ROTHERHAM PARTNERSHIP

# STRATEGY 2025-2028



# CONTENTS



<b>Foreword - Councillor Alam</b>	<b>Page 1</b>
<b>Introduction</b>	<b>Page 3</b>
<b>Rotherham Overview</b>	<b>Page 5</b>
<b>Safer Rotherham Partnership Priorities 2022-25</b>	<b>Page 6</b>
<b>Our Progress 2022-25 - Protecting Vulnerable Children</b>	<b>Page 7</b>
<b>Our Progress 2022-25 - Protecting Vulnerable Adults</b>	<b>Page 8</b>
<b>Our Progress 2022-25 - Safer Stronger Communities</b>	<b>Page 9</b>
<b>Our Progress 2022-25 - Protecting People from Violence and Organised Crime</b>	<b>Page 10</b>
<b>Our Progress 2022-25 - Comms and Engagement</b>	<b>Page 13</b>
<b>Our Progress 2022-25 - Project: Community Payback</b>	<b>Page 14</b>
<b>Safer Rotherham Partnership Priorities 2025-28</b>	<b>Page 15</b>
<b>Safer Rotherham Partnership Priorities 2025-28 One Page Plan</b>	<b>Page 17</b>
<b>How we decided our priorities for 2025-28</b>	<b>Page 18</b>
<b>Governance</b>	<b>Page 19</b>
<b>Delivery Plans, Performance Management and Review</b>	<b>Page 20</b>
<b>Local and National Information and Support</b>	<b>Page 21</b>

## FOREWORD

# COUNCILLOR SAGHIR ALAM OBE

## CABINET MEMBER FOR COMMUNITY SAFETY

**As we embark on a new three-year strategy, it is essential to reflect on the significant strides we have made in safeguarding our community and addressing critical issues such as child exploitation, neglect, modern slavery, substance misuse, mental health, hate crime, online crime, and domestic abuse. This strategy highlights our key achievements and outlines our ongoing commitment to creating a safer and more supportive environment for all residents of Rotherham.**

We have continued our efforts to combat child exploitation through the "Spot the Signs" campaign and comprehensive training programs. We have raised awareness about the indicators of child exploitation and delivered training across our partnership, ensuring staff can identify signs of exploitation. Additionally, training for taxi drivers and public awareness sessions on YouTube have further strengthened our community's vigilance.

The Violence Reduction Unit supported the Street Doctor's initiative which educates young people on first aid for knife injuries and the consequences of street violence. Additionally, during Operation Sceptre, interactive sessions were provided to education providers to assist with lockdown protocols and mitigate risks.

We have consolidated working arrangements between the Probation Service and Drug and Alcohol Service, resulting in improved offender management and client engagement. Enhanced joint working within the criminal justice system has led to a steady increase in Drug Rehabilitation Requirement Orders and Alcohol Treatment Requirement Orders and the integration of a Dual Diagnosis nurse and key worker into the Rotherham Drug & Alcohol Service has strengthened collaboration with community mental health teams and outreach prevention teams.



# FOREWORD

## COUNCILLOR SAGHIR ALAM OBE CABINET MEMBER FOR COMMUNITY SAFETY

We have continued to raise awareness of hate crime and the adoption of Rotherham Youth Cabinet's Hate Charter by schools has increased significantly. Our professional development package for schools and the quarterly e-newsletter, "Hate Bullying," share good practices, news, training offers and resources.

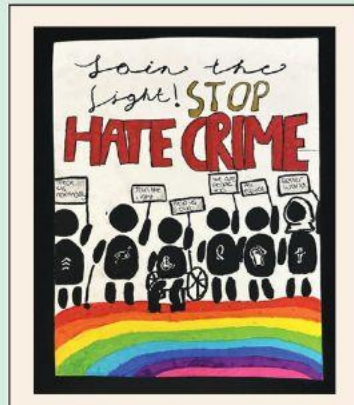
We delivered training and awareness on online risks including keeping young people safe online, image sharing, online radicalisation and cyberbullying to professionals and the public and collaborating with the Digital Inclusion Team to improve online safety in the community.

Our Domestic Abuse Assertive Outreach Service supports individuals with complex needs and programs like Cranstoun Inspire to Change and Level Up have reduced reoffending rates and addressed abusive behaviours. Initiatives like the WalkSafe app and the annual Reclaim the Night march have promoted safety and awareness for women and girls in our community.

These are just some of the key achievements which reflect our unwavering commitment to safeguarding our community and effective partnership working. This collective effort ensures that our initiatives are more comprehensive, impactful and sustainable, ultimately leading to a safer and more resilient community.

**I would like to thank all board members for their hard work and participation over the last three years. I look forward to working with you in future years, where we will continue to build on these successes, ensuring that Rotherham remains a safe and supportive place for all its residents.**

**Councillor Saghir Alam OBE  
Cabinet Member for Finance & Safe and Clean Communities**



### **Bullying and hateful behaviour have no place in school.**

If you see or experience hate-related bullying or harassment, tell a teacher or member of staff.

If you see or experience a hate incident outside of school, it is just as important to tell someone.

### **Don't let hate go unchallenged.**

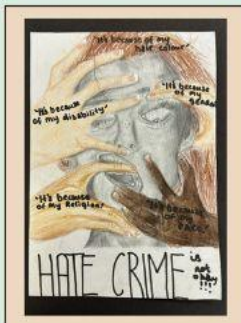
To report a hate crime to the police in an emergency, or when someone is in immediate danger, call 999.

For non-emergencies call 101, or report online at: [www.southyorkshire.police.uk/ro/report/ocr/af/how-to-report-a-crime/](http://www.southyorkshire.police.uk/ro/report/ocr/af/how-to-report-a-crime/)

Designs by Maddy Jones and Abi Jones, Winterhill Academy, and Zara Iftikhar, Brinsworth Academy, on behalf of Rotherham Council's Community Safety Team.



Left unchecked, hateful speech and actions towards people from specific groups, or towards individuals with certain characteristics, can lead towards harmful extremism.



# WORKING TOGETHER TO MAKE ROTHERHAM SAFE, TO KEEP ROTHERHAM SAFE AND TO ENSURE THE COMMUNITIES OF ROTHERHAM FEEL SAFE

**The Safer Rotherham Partnership is the borough's Community Safety Partnership, set up under the Crime and Disorder Act 1998.**



Responsible authorities have a duty to work together to protect their local communities and help people feel safer. They work out how to deal with crime and local issues like anti-social behaviour, drug or alcohol misuse and reoffending. They assess local crime priorities annually, consulting with partners and the local community about their priorities and monitor progress in achieving them.

# THERE ARE FIVE RESPONSIBLE AUTHORITIES THAT MAKE UP THE SAFER ROTHERHAM PARTNERSHIP:

Probation Service

NHS South Yorkshire Integrated Care Board (ICB)

Rotherham Metropolitan Borough Council

South Yorkshire Fire and Rescue

South Yorkshire Police

The Rotherham NHS Foundation Trust, Victim Support and Voluntary Action Rotherham are additional and valued members of the Safer Rotherham Partnership. Voluntary Action Rotherham represents and promotes the role of the voluntary and community sector in tackling local crime and community safety issues.

The South Yorkshire Mayoral Combined Authority is also represented at meetings, helping to join up work on local priorities with the South Yorkshire Police and Crime Plan.



# ROTHERHAM OVERVIEW

Rotherham is one of four metropolitan boroughs in South Yorkshire

There are 25 electoral wards covering a wide range of urban, suburban, and rural areas

70% of Rotherham is open countryside



Estimated Population  
**271,195**



**49% Male**  
**51% Female**



**18.9%** aged 0-15  
**61.5%** aged 16-64  
**19.6%** aged 65+

Population is ageing, with 1 in 5 residents 65 and over



**11.7%** minority ethnic groups

**88.3%** of residents are White British

Rotherham has an increasingly diverse community

**75%** satisfied with their local area as a place to live

**66%** satisfied with the wider borough as a place to live



**67.1%** are in Employment



**10.6%** of the working age population have no qualifications



**23%** of neighbourhood areas in Rotherham are within the bottom 10% in England for Education



**22%** of residents in Rotherham are living within the 10% most deprived in England



Rotherham has an overall Health Index score of 95.6, within the Average in England as of 2021

**4 million** visits to Rotherham's attractions last year



including Wentworth Woodhouse, Gulliver's and Magna amongst South Yorkshire's most popular tourist destinations



# COMMUNITY SAFETY IN ROTHERHAM 2022-2025

The Safer Rotherham Partnership agreed 4 priority areas from 2022-2025. Annual reviews of objectives and performance measures ensured proactive responses were made to new and emerging challenges and opportunities.

**Protecting Vulnerable Children**

**Protecting Vulnerable Adults**

**Safer Stronger Communities**

**Protecting People from Violence and Organised Crime**





# OUR PROGRESS IN 2022-2025 PROTECTING VULNERABLE CHILDREN

**WE HAVE RAISED AWARENESS OF THE SIGNS OF CHILD EXPLOITATION THROUGH THE SPOT THE SIGNS CAMPAIGN AND TRAINING**

Awareness session for the public on YouTube



Spotting the signs of exploitation - embedded into the training provided to all new and existing taxi drivers

Girls and Gangs training across the partnership

Information cards shared widely including local businesses, libraries, partner organisations, schools, Parish Councils and Elected Members.

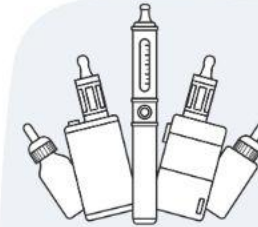
Training on Minimising Unconscious Bias in Child Criminal Exploitation

The Neglect Delivery Group has been established and the Neglect Strategy has been developed to support training and development for practitioners.

Child Matters training has been delivered to South Yorkshire Police which has improved the accuracy of identification and recording of cases under Neglect.

Supported South Yorkshire Police in offering specialist training to hotels

Training has been provided to over **1,000** professionals on how to submit intelligence to the Police about child exploitation.



We have supported the delivery of Vapes Awareness sessions in schools to over **4000** students



# OUR PROGRESS IN 2022-2025 PROTECTING VULNERABLE ADULTS



Consolidation of working arrangements between the Probation Service and Drug and Alcohol Service has improved offender management and client engagement with services, resulting in more positive overall outcomes for service users.

A Dual Diagnosis nurse has been embedded into the Rotherham Drug & Alcohol Service together with a key worker to develop work with community mental health teams and outreach prevention teams.

The Mental Health Specialist within the Safer Neighbourhood Service has made over **3,300 interventions** with individuals, that have included over **1,100 repeat referrals** resulting in reduced demand on services and increasing opportunities for long term, sustainable solutions.

Improved joint working arrangements and liaison within the criminal justice system has resulted in a steady increase in the number of Drug Rehabilitation Requirement Orders and Alcohol Treatment Requirement Orders.

We have introduced the Council Modern Slavery Steering Group which has further improved co-ordination across the council.

Modern Slavery awareness raising training delivered to over **550 professionals** across the partnership including Registered Social Landlords and Landlords within the designated Selective Licensing Scheme areas.

Since 2022/23 a total of **157** of the most complex cases have been subject to Community Multi-Agency Risk Assessment Conference (CMARAC) referral and intervention to address complex needs and reduce risks and vulnerabilities.

# OUR PROGRESS IN 2022-2025 SAFER STRONGER COMMUNITIES

## WE HAVE CONTINUED TO RAISE AWARENESS ON HATE CRIME

Local media coverage of our hate crime projects reached more than

**46,000**  
local people

We have seen a significant rise in the number of schools adopting Rotherham Youth Cabinet's Hate Charter.

The number of hate crime reporting centres in the borough more than doubled in 2023, allowing quicker, easier reporting.

We have had contact with each primary and secondary school and college at least once every quarter throughout 2024

We have developed a professional development package for schools on hate crime.

We have launched a quarterly e-newsletter, Hate Bullying, to share good practice, news, training offers and resources.

We have delivered a hate crime awareness project in 4 secondary schools in Summer 2024.

Annual Harms of Hate events for Y6s delivered to  
**550**  
primary school pupils



Radicalisation  
Bystander Interventions  
Holding Difficult Conversations  
**TRAINING AND INTERVENTIONS**  
Extremism Right Wing Awareness

Over 3 years  
**1918**  
young people have attended sessions to build understanding of the impact hate crime has through our restorative hate crime service.

One to one interventions have also been delivered to  
**33 adults**  
**129 young people**  
(Apr22-Dec24)

In response to the violent disorder seen in summer 2024, awareness raising and resilience building sessions were delivered to over  
**3000**  
students in Rotherham.



We have established the Digital Champions Network, to increase awareness of online and digital developments.



We have worked alongside the Digital Inclusion Team to develop an Online Safety booklet and deliver awareness sessions to the community

Keeping young people safe online  
Image Sharing

Online safety awareness sessions delivered to professionals and the public

Cyberbullying  
Online Radicalisation

# OUR PROGRESS IN 2022-2025

## PROTECTING PEOPLE FROM VIOLENCE AND ORGANISED CRIME

### DOMESTIC ABUSE

The Council's Domestic Abuse Assertive Outreach Service provides support for individuals with the most complex needs

Average victim engagement rate  
**78%**

Support offered includes 1:1 sessions, webchats, therapeutic group work and counselling

We have commissioned Cranstoun Inspire to Change, a programme for men and women who have been abusive, controlling or violent towards their partner

**73%**

Reduction in reoffending rates of perpetrators who completed the programme

We have commissioned Cranstoun Level Up programme, designed specifically for young people between the ages of 11 and 18 who are presenting abusive and challenging behaviours

Clare's Law, also known as the Domestic Violence Disclosure Scheme (DVDS), allows people to ask the police about a person's history of domestic abuse

We shared the Clares Law fact sheet with partners to encourage right to ask applications – the number of applications have increased by 30% since 2022

Domestic Violence Protection Order (DVPO) applications are monitored and effectively utilised to give breathing space for victims

The transformation of domestic abuse services was completed in October 2022 with Hopian (formerly Rotherham Rise) becoming the "one front door" pathway for all domestic abuse referrals

The Homelessness Prevention Fund has supported victims and families at risk of being made homeless due to domestic abuse with essential financial support and target hardening

Over 500 awards have been made over the last 3 years

The Domestic Abuse Homelessness Officers are providing 1:1 support for domestic abuse victims/survivors presenting as homeless

All the 13-specialist local authority domestic abuse properties are consistently occupied

We launched the Domestic Abuse older people's campaign 'Abuse has no age limit' with involvement from Rotherham Older People's Forum.



**ABUSE HAS NO AGE LIMIT**

**Just because you've not reported it in the past, doesn't mean you can't report it now.**



# OUR PROGRESS IN 2022-2025

## PROTECTING PEOPLE FROM VIOLENCE AND ORGANISED CRIME SEXUAL ABUSE AND VIOLENCE AGAINST WOMEN AND GIRLS



**WalkSafe**

We have launched the WalkSafe app in Rotherham alongside South Yorkshire Police – a free personal safety app including journey planning and a map of local safe places

**221**

safe spaces identified within the WalkSafe safety map

**3,648**

app downloads from the local QR code

**45,662**

app interactions within the geo-tagged area

Since the launch of the WalkSafe app in South Yorkshire to Feb 25



Promotion of the WalkSafe app has included colleges, partners, Elected Members and with the public via events such as Reclaim the Night

We have supported the delivery of the annual Reclaim the Night march in Rotherham, celebrating Rotherham's women and campaigning to make our streets safer for all. In 2024 we held our 10th anniversary walk and were joined by over 100 people parading through the Town Centre.



We have supported the Safe Space evenings delivered through the Violence Reduction Unit over the Christmas period. This included Rotherham Councils CCTV van deployed with a Police Officer, Medics providing outreach first aid and medical cover in the designated area and Outreach and Engagement within the Town Centre focused on key safety awareness messages.

We have delivered a number of events aimed at improving safety in the Night Time Economy including training for staff, managers and door security staff covering safeguarding children, responding to serious violence and domestic abuse.

We have supported the delivery of sessions to college students around the dangers of drink spiking

A South Yorkshire sex work steering group has been established to improve understanding of sex work in South Yorkshire and increase awareness of support services.

We have established a sexual abuse pathway for Rotherham to identify clear routes to support for victims of sexual abuse.

We have installed innovative lighting and CCTV along a popular route in Clifton Park to help improve feelings of safety, funded by the Government's Safer Streets Fund.



# OUR PROGRESS IN 2022-2025

## PROTECTING PEOPLE FROM VIOLENCE AND ORGANISED CRIME

### VIOLENCE AND ORGANISED CRIME

Action on counterfeit vapes, vape liquids and cartridges and illegal cigarettes Joint Police and Council Trading Standards Officers operations



**over £887,428**

worth of illegal tobacco and vape products removed from sale (22-25)

**350 vapes and liquids**

collected in schools from 2023

**15 vapes**

sent for testing due to students having to seek medical attention after use - results showed Class A, Class B and Class C drugs, ketamine and other unknown cocktails.

There has been an increase in targeted commissioning of initiatives for young people in areas impacted by Organised Crime Groups.

A drone was purchased to tackle organised crime groups by aiding with intelligence gathering and assisting with fleeing offenders

**70 warrants** executed across the borough as part of **Op Grow** leading to seizure of **17,846 cannabis plants**

Multi agency links have been strengthened in relation to child exploitation and organised crime.

The Violence Reduction Unit have funded the Plan B Custody Navigator scheme, delivered by Causeway, it aims to engage people aged 16+ to help them step away from crime.

As part of the Reducing Violence programme, Rotherham funded a Street Doctor's initiative for young people focused on the first aid intervention required due to a knife or sharp instrument injury or head injury.

The sessions also support young people to understand the medical consequences of street violence, how to keep themselves safe and the mental health/ emotional impact of street violence.

Warning notices have been issued to organised crime members around gun crime and child exploitation.

During Operation Sceptre, the Violence Reduction Unit supported interactive sessions for education providers to assist lockdown protocols and mitigate risks

A refreshed, agreed Action Plan is continuing to drive activity and progress against the identified objectives and our preparedness for the forthcoming introduction of the Terrorism (Protecting of Premises) Legislation – Martyn's Law.

The multi-agency Protect and Prepare Group have completed a full review and self-assessment of progress against responsibilities in respect of the Protect Duty.



# OUR PROGRESS IN 2022-2025 COMMUNICATIONS AND ENGAGEMENT

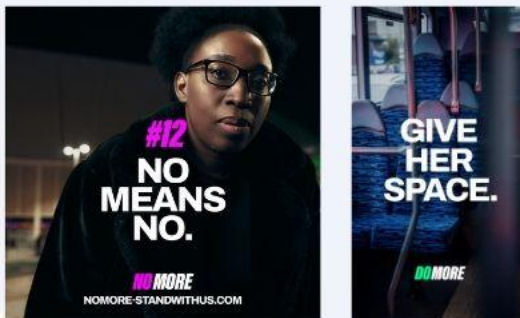
## Community Safety supports the annual Safeguarding Awareness Week



We have supported the delivery of training including:

- Modern Slavery
- Domestic Abuse
- Online Safety
- Extremism
- Sharing Images Online
- Online Radicalisation
- The misuse of Social Media

We have supported the No More campaign in South Yorkshire focussing on the microaggressions and acts of violence women face every day and every night. We have also promoted the additional phases of the campaign focusing on bystander intervention in Do More and Online abuse in Know More



We have held a number of Rotherham Safer Venues Together Events in partnership with Violence Reduction Unit and South Yorkshire Police.



Providing information and support to licensed premises on safeguarding in their venues including:

- Ask for Angela
- Drink Spike awareness
- Safeguarding children
- Safe search techniques
- Responding to violent incidents
- Domestic Abuse

We have developed targeted campaigns to help tackle Domestic Abuse and support annual campaigns including Sexual Abuse and Sexual Violence Week and 16 Days of Action Against Gender Based Violence



43,500 people reached through our social media channels  
80% of our followers from Rotherham



We are members of the National Safe Place scheme and have 22 venues registered who have received specific safeguarding training

We continue to support licensed premises in implementing Ask for Angela through Pub Watch meetings, social media promotion and training including venue staff and taxi drivers and support checks on licensed premises to ensure the scheme is working.



# OUR PROGRESS IN 2022-2025

## PROJECT EXAMPLE: COMMUNITY PAYBACK



Community Payback is a community sentence for people convicted of a crime and is an alternative to custody. In Rotherham we have funded a bespoke Community Payback contract via The Probation Service. Through this bespoke contract, Rotherham have a dedicated Community Payback Team working within the borough focussing on key projects and activities 4 days a week as a result of requests made by the community via Officers and Elected members. This is in addition to the South Yorkshire wide team completing projects sent directly to The Probation Service via their normal request system.

From April 2022  
to January 2025:

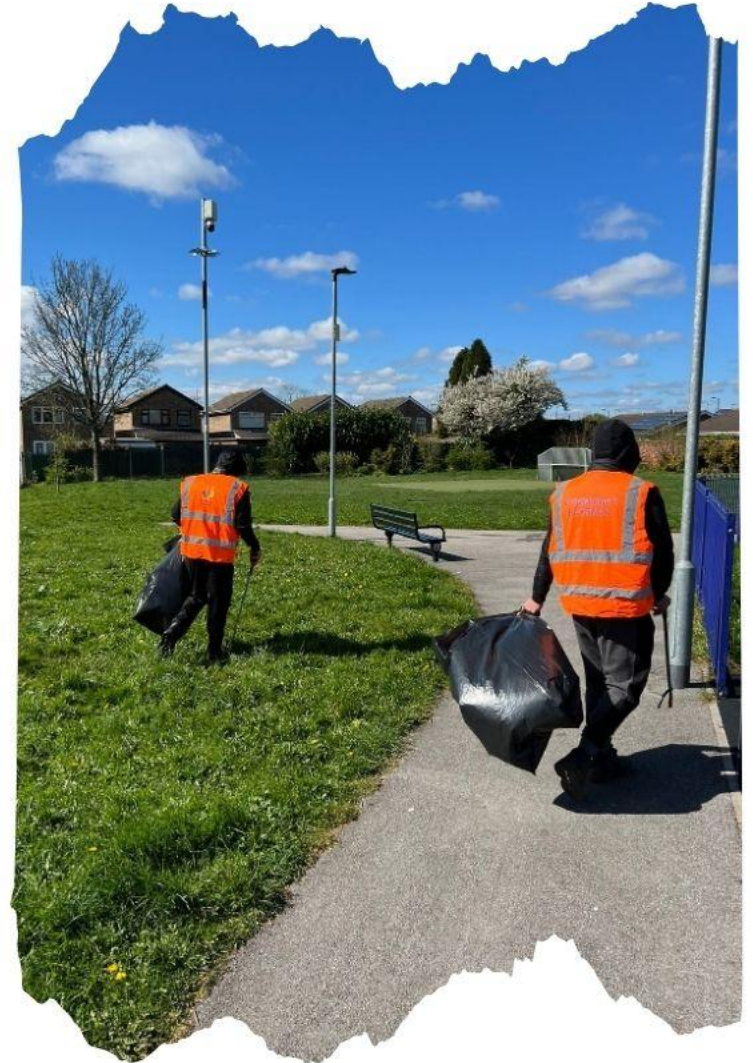
over

**27,000**

hours of work have  
been completed

with an equivalent real  
living wage value of

**£294,000**





# SAFER ROTHERHAM PARTNERSHIP PRIORITIES 2025-28



## Safer Neighbourhoods

Problem solving in neighbourhoods

ASB

Hate crime

Combating alcohol and substance misuse



## Tackling Violence, Abuse and Exploitation

Domestic Abuse (including Domestic Homicide Reviews)

Sexual Offences

Violence Against Women and Girls

Modern slavery

Serious Violence (Serious Violence Duty)

Organised Crime

Child exploitation (criminal and sexual exploitation)



Preventing radicalisation (Prevent and Channel duties)

Martyn's Law (Protect Duty)

Preventing offending and reoffending (adults)

Preventing offending and reoffending (young people)

Vulnerable Adult Risk Management Pathway

## Preventing offending – Building resilience



# SAFER ROTHERHAM PARTNERSHIP PRIORITIES 2025-28



## Cross Cutting Themes

Alongside our identified priorities we will also consider cross cutting themes which impact all community safety priorities.



## Online Crime

Plans and actions for each priority area will take into account how online crime impacts on each crime/priority.



## Service User Voice

We will ensure the voice of service users, including protected characteristic groups, inform priority setting, action planning and performance management.



## Equality

We will monitor access and the impact of our actions and services on communities including protected characteristic groups.



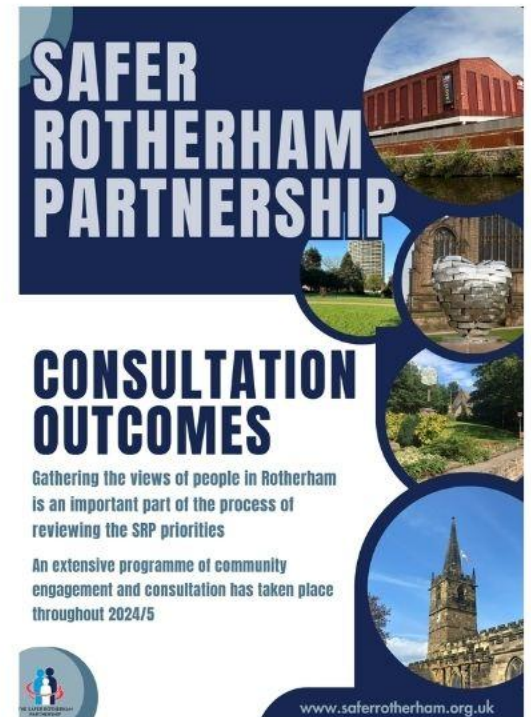
 <b>Safer Neighbourhoods</b>	Problem solving in neighbourhoods	Director Of Services, Voluntary Action Rotherham	Monitor and evaluate the partnership approach to problem solving in local neighbourhoods and share good practice and/or learning. Explore innovative ways in which partners and the public can be educated around online safety and digital technologies and develop engagement with young people, families and older people.
	Anti-Social Behaviour	Chief Inspector (Neighbourhoods), South Yorkshire Police	Monitor and evaluate perceptions of ASB, feelings of safety and seek to understand what influences change. Seek appropriate external funding opportunities and support and participate in partnership bids to secure additional funding for activity in the borough
	Hate crime		Focus on the use of education and engagement to prevent hate crime by tackling the drivers of hate.
	Combating alcohol and substance misuse	Chair of Combatting Drugs Partnership	Ensure there is an effective strategy for combatting the misuse of drugs, alcohol and other substances in the area, as required by the Crime and Disorder Act 1998 Part 1 Section 6, by scrutinising the plans, action and performance outcomes of the Combating Drugs Partnership.
 <b>Tackling Violence, Abuse and Exploitation</b>	Domestic Abuse (including Domestic Homicide Reviews)	Head of Adults Safeguarding Head Of Service, RMBC Community Safety and Regulatory Services	Complete a refresh of the DA strategy, capturing any analysis from the DA needs assessment and survivor voice to improve outcomes for victims and their children Ensure all those fleeing domestic abuse are able to access safe accommodation and appropriate support. Support South Yorkshire Police with the 'Rapid' review of Domestic Abuse particularly how they tackle perpetrator behaviours.
	Sexual Offences	Detective Chief Inspector, South Yorkshire Police	Improve reporting of sexual offences through awareness raising, projects and training and focus on victim engagement Work with partners to understand work with perpetrators of sexual abuse to reduce reoffending and identify any gaps.
	Violence Against Women and Girls	Detective Chief Inspector, South Yorkshire Police	Reduce male violence against women and girls by focussing on hot spot locations and repeat perpetrators and use of digital tools to identify online risks and hot spot locations for non-crime incidents. Deliver awareness raising events, projects and promotions aimed at improving women and girls' safety and feelings of safety.
	Modern slavery	Superintendent, South Yorkshire Police	Improve knowledge and awareness around identifying the signs of Modern Slavery and the mechanisms for reporting
	Serious Violence (Serious Violence Duty)	Superintendent, South Yorkshire Police	To foster a collaborative environment among enforcement agencies, intelligence services, and community organisations by establishing robust information-sharing protocols and partnership problem solving. Focus on individuals and groups causing the highest harm to communities through targeted interventions and disruptions.
	Organised Crime	Head Of Service, RMBC Community Safety and Regulatory Services	Implement measures to reduce the availability and use of firearms and other lethal weapons in violent crimes. Provide effective rehabilitation programs for individuals entrenched in violence and prevent new individuals from becoming involved in organised crime. Increase community awareness and engagement to prevent organised and violent crime through education and outreach.
	Child exploitation (criminal and sexual exploitation)	Chair of Rotherham Safeguarding Children Partnership Child Exploitation Delivery Group	Ensure that action to tackle and disrupt crimes relating to child criminal and sexual exploitation is effective by scrutinising the plans, action and performance outcomes of the Rotherham Safeguarding Children Partnership Child Exploitation Delivery Group.
 <b>Preventing offending – Building resilience</b>	Preventing radicalisation (Prevent and Channel duties) Martyn's Law (Protect Duty)	Assistant Director, Community Safety and Street Scene, Rotherham Council	Reduce the risk of terrorism by taking a partnership approach to the Prevent, Protect and Prepare workstreams of the UK Contest Counter Terrorism Strategy. Achieve compliance with the Channel, Prevent and Protect duties (including Martyn's law and Hostile Vehicle Mitigation) under the Counter Terrorism and Security Act 2015, demonstrated through self-assessment using Home Office toolkits.
	Preventing offending and reoffending (adults)	Head of Barnsley and Rotherham Probation Delivery Unit	Ensure there is an effective strategy for the reduction of reoffending in the area, as required by the Crime and Disorder Act 1998 Part 1 Section 6, by scrutinising the plans, action and performance outcomes of the Probation Service in relation to adult reoffending.
	Preventing offending and reoffending (young people)	Chair of Youth Justice Board / Assistant Director, Early Help, RMBC	Ensure there is an effective strategy for the reduction of reoffending in the area, as required by the Crime and Disorder Act 1998 Part 1 Section 6, by scrutinising the plans, action and performance outcomes of the Youth Justice Service in relation to young people's reoffending.
	Vulnerable Adult Risk Management Pathway	Safeguarding Adults Board	Ensure that effective multi-agency interventions are in place for adults with complex needs, to reduce the risks of them becoming involved with the criminal justice system as victims or offenders, through scrutiny of the Vulnerable Adult Risk Management Pathway led by the RMBC Head of Service, Safeguarding and Mental Health and Safeguarding Adults Board Prevention and Early Intervention Sub Group.

# HOW WE DECIDED OUR PRIORITIES FOR 2025-28

Alongside our statutory duties, the Safer Rotherham Partnership has used an evidence based approach to decide priorities, by drawing on the best available data and information. This included local and national crime and community safety data; the expertise and judgement of professionals and practitioners working in local partner organisations; and the views of people who live, visit or work in Rotherham. We also considered current legislation and other relevant local and national strategies and plans.

Some of the key issues raised during our consultation included:

 Anti-social behaviour	 Drug use
 Child Criminal Exploitation	 Community Cohesion
 Burglary	 Fly tipping
 Quads/Off road bikes	 Domestic Abuse
 Online safety	 Drug dealing and County Lines
 Organised Crime	 Road Safety



**SAFER ROTHERHAM PARTNERSHIP**

**CONSULTATION OUTCOMES**

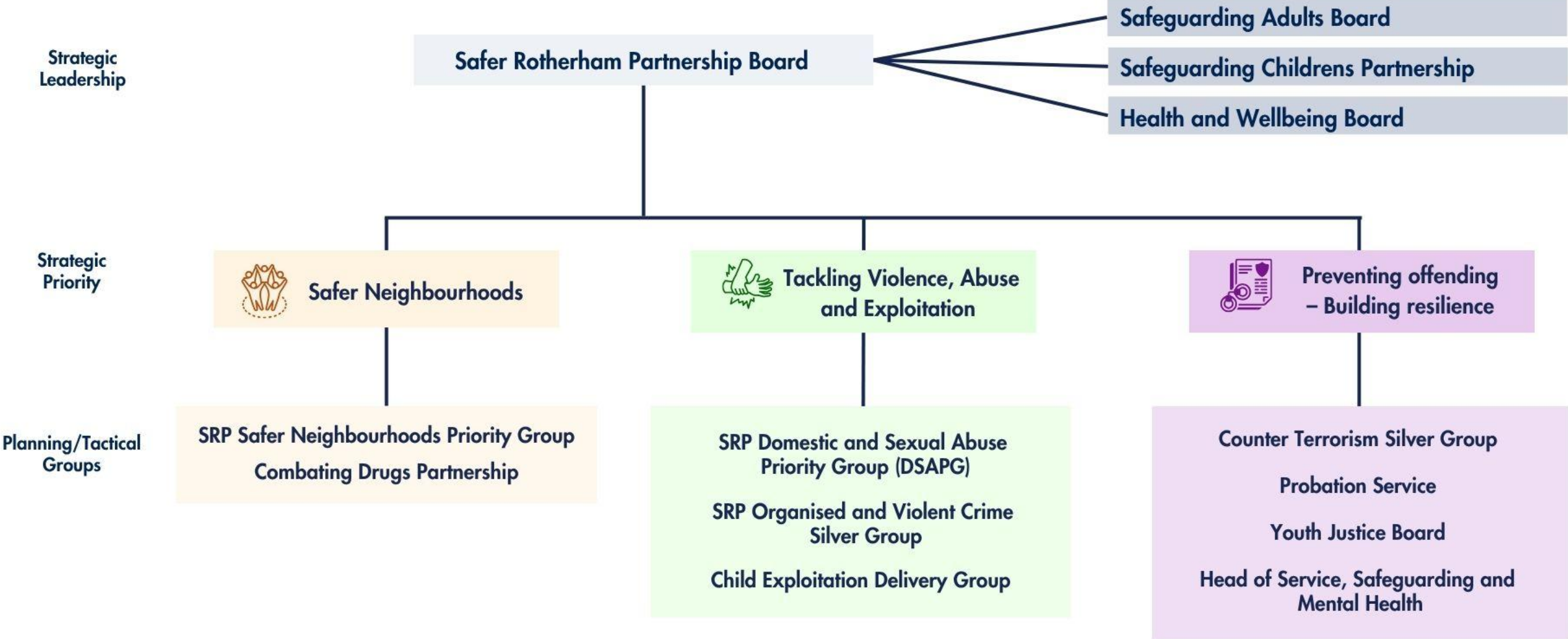
Gathering the views of people in Rotherham is an important part of the process of reviewing the SRP priorities

An extensive programme of community engagement and consultation has taken place throughout 2024/5

[www.saferrotherham.org.uk](http://www.saferrotherham.org.uk)

Full outcomes for the consultation can be found at [www.saferrotherham.org.uk](http://www.saferrotherham.org.uk)

# GOVERNANCE



# DELIVERY PLANS, PERFORMANCE MANAGEMENT AND REVIEW



**Action Plans will be developed for each strategic priority**

**Quarterly performance reports will be produced and reported to the Safer Rotherham Partnership Board.**

**The Safer Rotherham Partnership Board will monitor and oversee progress, provide strategic level decision making and constructive challenge.**

**The commitments and objectives within each strategic priority area and the associated actions plans and performance measures will be reviewed annually and agreed with the Safer Rotherham Partnership Board.**

# LOCAL AND NATIONAL INFORMATION AND SUPPORT

**If you have concerns for a child or young person**

If you consider a child or young person to be in immediate danger and requiring an urgent response, call 999

Otherwise, please call the Multi Agency Safeguarding Hub (MASH) on 01709 336080

**If you have concerns for an adult or older person**

If you consider an adult or older person to be in immediate danger and requiring an urgent response, call 999

In other cases, you can contact Adult Social Care on 01709 822330

**South Yorkshire Police**

Phone 999 (If you are in immediate danger)

Phone 101 (non-emergency)

[Report online here](#)

## Domestic Abuse

If an incident of domestic abuse is happening now or someone has been injured or is in danger, call 999

Call South Yorkshire Police on 101 (non-emergency)

## Victim Support

Website: [www.victimsupport.org.uk](http://www.victimsupport.org.uk)

Free support line: 0808 168 9291 (8am-8pm, Mon-Sun)

Out of hours: 0808 168 9111

## Adult Sexual Assault Referral Centre Service

Phone: 0330 2230099

Website: <https://hackenthorpelodge.org/>

## South Yorkshire Independent Sexual Violence Service

Website: [www.syisva.org.uk](http://www.syisva.org.uk)



# LOCAL AND NATIONAL INFORMATION AND SUPPORT



## Anti-Social Behaviour Reporting

[Report ASB to Rotherham Council](#)

## Out of Hours Anti-Social Behaviour and Noise Nuisance

Phone 01709 823140

This service operates between 18:00pm and Midnight, 7 Days a Week (excluding Christmas Eve, Christmas Day, Boxing Day, New Year's Eve and New Years Day)

## Drug and Alcohol Services

Phone 0808 1753981

[We Are With You](#)

[Rotherham Council Drug, Alcohol and Smoking Support](#)

## Online Safety Support

Click on the links below for information and support with online safety issues

[Child Exploitation Online Protection \(CEOP\)](#)

[NSPCC - Keeping children safe online](#)

[Online Safety Booklet](#)

## Hate Crime Reporting

[South Yorkshire Police - reporting hate crime](#)

[Rotherham Council - reporting hate crime](#)

## Mental Health Support

[NHS talking Therapies](#)

[Rotherham Council Wellbeing help and mental health support](#)





For further information visit the Safer Rotherham Partnership website

[www.saferrotherham.org.uk](http://www.saferrotherham.org.uk)



Follow us on social media for our latest news and updates at:

[www.facebook.com/Rotherhamcommunitysafety](https://www.facebook.com/Rotherhamcommunitysafety)

[www.instagram.com/rmbccommunitysafety](https://www.instagram.com/rmbccommunitysafety)



Contact us via email at: [community.safety@rotherham.gov.uk](mailto:community.safety@rotherham.gov.uk)



If you would like this information in another language or format, please ask us. You can contact us through our website or by emailing [community.safety@rotherham.gov.uk](mailto:community.safety@rotherham.gov.uk)

