



Voluntary Action Rotherham



Rotherham VCSE & Health

November 2025

Hannah Thornton, Director of Services (Projects)

Rotherham VCSE - State of the sector 2024

**1,399
Organisations**

The majority are small (£10k - £100k) or micro (under 10k income)

3,388 employees work in charities in Rotherham

£120 million estimated contribution of **employees to the economy** per annum

6,017 people **volunteer** in charities in Rotherham

£17 million estimated contribution of **volunteers to the economy** per annum

1,774 people are **trustees** in charities in Rotherham

Overall income of charities in Rotherham:
£97 million



Supporting health and wellbeing

Supporting local communities and increasing participation



Providing advice and training

Advocacy and awareness raising

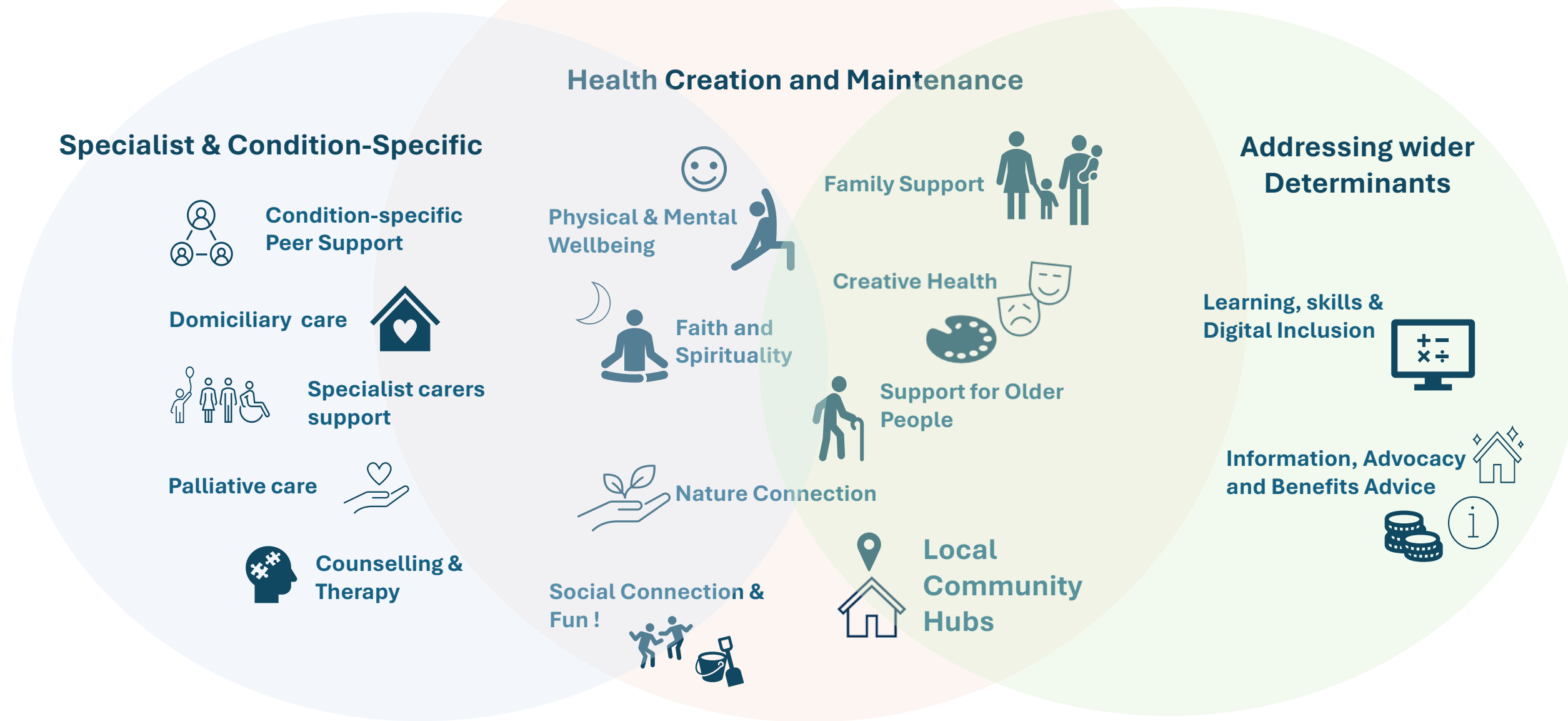


Many organisations have a focus on **diversity, equity and inclusion**. Some are specifically dedicated to serving particular groups, including:

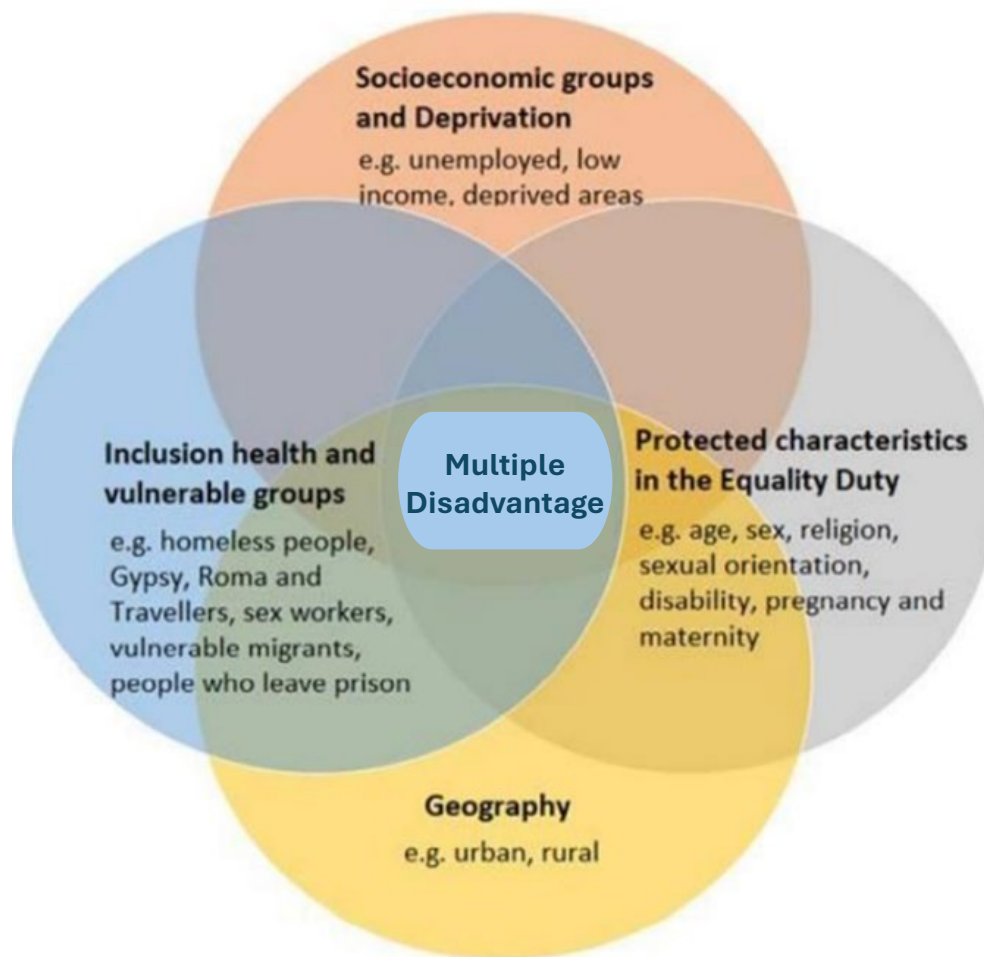
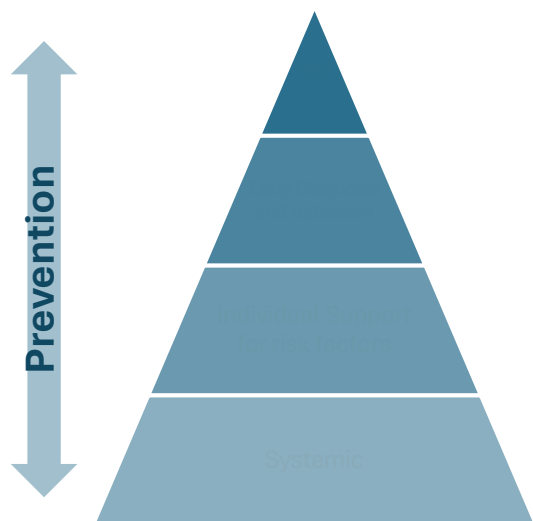
- **older people** (26%)
- **disabled people** (21%)
- people who are **educationally or economically disadvantaged** (14%)
- communities experiencing **racial inequity** (13%)
- **young people** (13%)



Rotherham VCSE - Connecting with people's health



Rotherham VCSE - Connecting with people where they are



Rotherham VCSE organisations receive funding from a range of sources with the highest levels coming from:

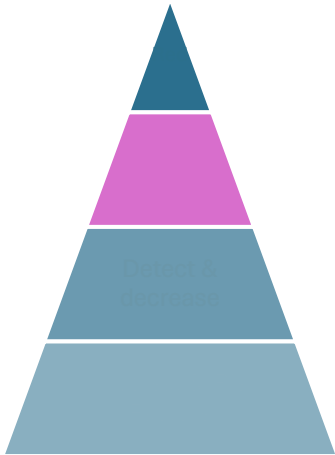
- Grants from trust and foundations (31%)
- Fees and earned income (22%)
- Grants from the public sector (18%)
- Contracts of service agreements (11%)

South Yorkshire VCSE: Understanding Value and Impact Sept 2024

Primary Care - Proactive Care

Risk Stratification of patients:

- moderate to severe frailty patients with 2+ hospital admissions in the last 12 months
- Diabetes + high risk of admission
- Respiratory + high risk of admission



Multi-Sector
PCN MDT

Non-MDT
direct referrals



Rotherham Social Prescribing Service

- Holistic Social Prescribing Assessment - what matters to you?
- Onward supported referral to specialised support
- Liaison with RMBC Housing/SPA/ASC as req'd

Dementia Carers Resilience Service

- Holistic Carers Wellbeing assessment
- Information & Guidance
- Onwards supported referral for specialist support

Micro-Commissioned Support:

- Befriending & Enablement
- Benefit info, advice & advocacy
- Specialist advocacy
- Carers respite
- Dementia Enablement
- Education & Training – digital inclusion
- Counselling
- Complementary therapies
- Activity pathway groups
- Physical Activity

8 Social Prescribing Community Hubs



Active Independence



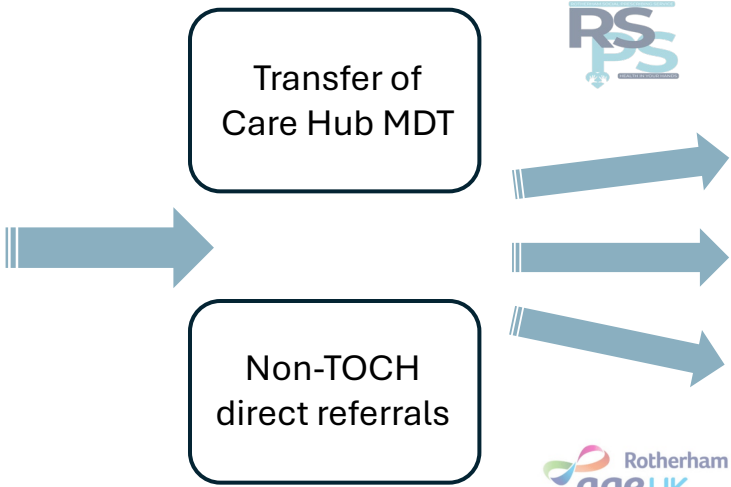
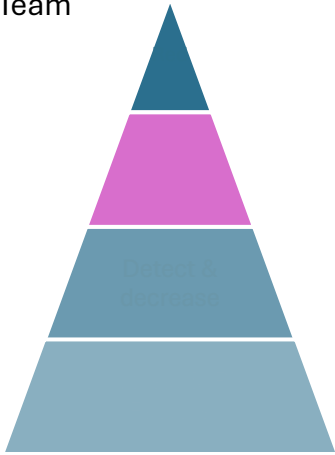
Active Independence

Wider VCS

Urgent & Emergency Care Centre

Identification of patients on/awaiting discharge:

- Integrated Discharge Team
- Urgent Therapy Team
- Reablement Team
- Healthy Hospitals Programme
- Community Hospital Admission Avoidance Team



Rotherham Social Prescribing Service

- Holistic Social Prescribing Assessment - what matters to you?
- Onward supported referral to specialised support
- Liaison with RMBC Housing/SPA/ASC as req'd

Hospital Aftercare Service

- Transport & settle within 3 hrs of referral
- Home visit and basic safe & well check
- Up to 30 days on going support

Micro-Commissioned Support:

- Befriending & Enablement
- Benefit info, advice & advocacy
- Specialist advocacy
- Carers respite
- Dementia Enablement
- Education & Training – digital inclusion
- Counselling
- Complementary therapies
- Activity pathway groups
- Physical Activity

8 Social Prescribing Community Hubs



Active Independence



Wider VCS

Rotherham Social Prescribing Service - Patient Case Study

Patient was referred for help to be more **socially connected**. He has hearing and sight loss, his magnifier was broken and was feeling very isolated. Patient was worried about accessing community groups as he struggles with his bowels. Patient and his partner were living in a rented house that didn't fit their needs as they had a broken stair lift and rusty grab rails, the patient was also concerned about mould. They required the heating on most of the time; this meant they were struggling financially as they were also paying for Carer.

- A referral to **Rotherham Sight and Sound** was made for a full review on the patient's home equipment. Advisor made a call to Sight & Sound to understand the accessibility of their groups (building layout and toilet access). Transport to get to the groups was arranged through a referral to Door2Door.
- A call was made to both **Blind Veterans** regarding replacing broken home equipment and a referral to **RSPS-Commissioned Digital Inclusion** delivered by **The Learning Community** to support the Patient to relearn his skills with his magnifier and continue communication with the Blind Veterans.
- RMBC were contacted regarding home equipment and reducing the cost of carers.
- A referral to **RSPS-Commissioned Advocacy** delivered by **You Ask We Responded** to support with a benefits check and to continue supporting with KeyChoices.
- A referral to **Green Doctor** was made for mould prevention and guidance of reducing bills.

As a result of RSPS support and the RSPS-Commissioned services, the patient now has a new flashing doorbell, new loudspeaker phone so he can use the telephone, new additional aid to support his hearing aids and he is awaiting piece of equipment to support with hearing the television. The patient has started walking outside of his home to build his confidence to eventually be able to access community groups. The patient has new grab rails in place and is now confidently using his magnifier 2-3 times per day and him and his partner have now been given a bungalow; they are awaiting an Occupational Therapy assessment prior to moving in.



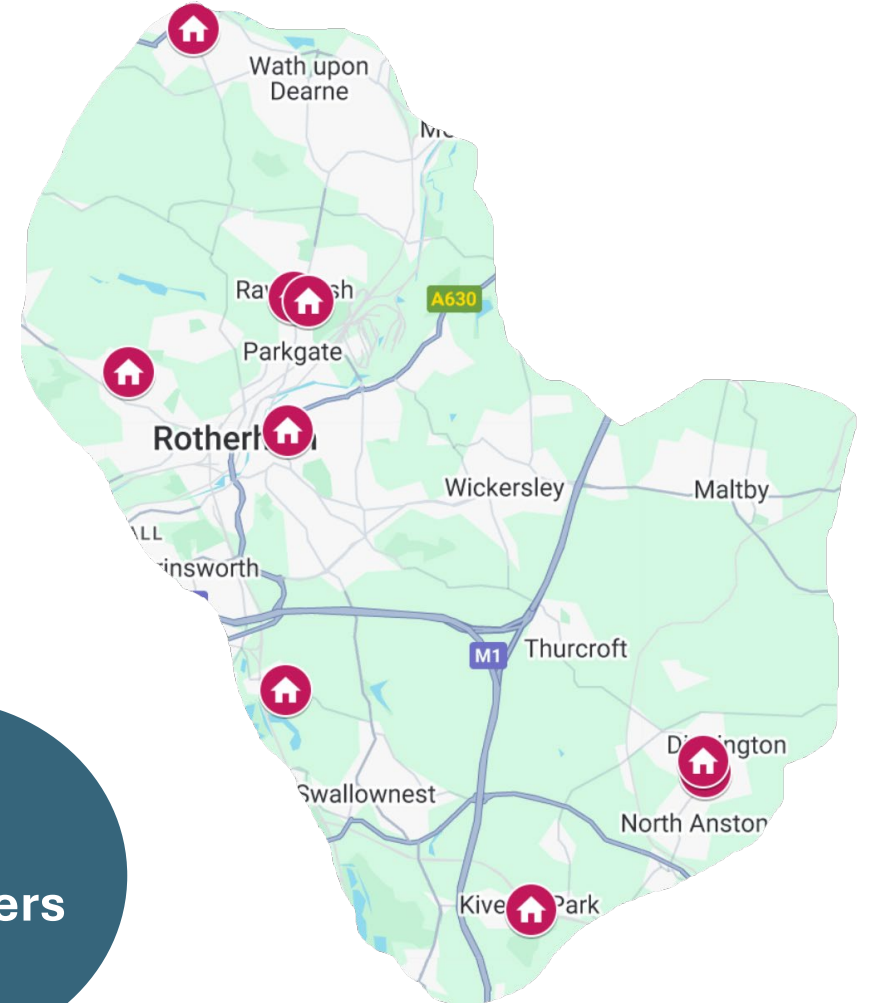
Social Prescribing Community Hub Network

- Cortonwood Comeback Centre
 - High St Centre, Rawmarsh
 - Unity Centre, town centre
 - Kimberworth Park Community Partnership
 - Dinnington Area Regeneration Trust
 - The Learning Community, Dinnington
 - Treeton Village Community & Resource Centre
 - Kiveton Community Hub
-
- Rawmarsh Social Prescribing Hub

**2,000+
People per
week**

**50+
Staff
employed**

**75+
Volunteers**



Social Prescribing Hub Rawmarsh Timetable

Rotherham Social Prescribing Hub
(Next to health centre & library)
Barbers Ave,
Parkgate,
Rotherham S62 6AA



| | Monday | Tuesday | Wednesday | Thursday | Friday |
|-----------|--|---|---------------------------------------|---|--|
| Morning | Rotherham Parent Carers Forum (RPCF) 9.30am - 11.30am Weekly SEND Connect Group | Impressive Expression 10am - 4pm Weekly | Pen & Purpose 10am - 1pm Weekly | Age UK Rotherham Coffee Morning 10am - 12pm Weekly | Memory Clinic RDASH Peer Support Group for Lewy Body Dementia 10am-12noon 2nd Friday of Every Month |
| Afternoon | You Asked We Responded (YAWR) 1pm - 3pm Weekly | Impressive Expression 10am - 4pm Weekly | Headway 1.15pm-3pm Weekly | Live Inclusive 12.30pm - 3pm Weekly | Nayi Zindagi session currently not running |
| Evening | Empowering Men Initiative 7pm - 9pm Every 2 nd & 4 th Monday of Month | Available contact VAR for more details | Women A.S.K 7pm - 9pm Weekly | The Rainbow Project 6.30pm - 8.30pm Weekly | Available contact VAR for more details |

Live Inclusive - www.liveinclusive.org.uk
07769039614

catherine@liveinclusive.co.uk

RANSS - www.ranss.co.uk

01709 296262 mike@rpof.co.uk

Nayi Zindagi

www.nayizindagi-newlife.org.uk

07542383655 rzhahmj786@hotmail.co.uk

The Rainbow Project - www.trpr.co.uk

07729418490

tony@therainbowprojectrotherham.com

Headway - www.headwayrotherham.org.uk

07925224461

info@headwayrotherham.org.uk

Women A.S.K - www.womenask.co.uk

07581396306 alisonhiggs@hotmail.co.uk

Pen and Purpose - 07541 991265

helopenandpurpose@gmail.com

Age UK Coffee Morning - 07988638355

madeleine.leaper@ageukrotherham.org

RPCF - www.rpof.co.uk - 01709 296262

sharon.foster@rpof.co.uk

Impressive Expression - 07769185804

impressive.expression3@gmail.com

YAWR Services - www.yawrservices.org

07512306827 makhmur@yawrservices.org

Empowering Men Initiative -

info@emicic.org

www.facebook.com/EmpoweringMenInitiative

07823422444

Memory Clinic Sessions - 03000 15100

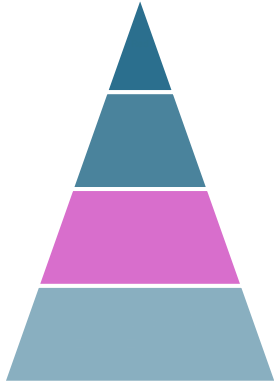
rdash.rotherham-memory-service@nhs.net

Primary Care – Integrated Mental Health Hubs

Care provision for people living with SMI

In the context of the CMHT this includes:

- psychosis, bipolar disorder, personality disorder diagnosis, eating disorders, severe depression and mental health rehabilitation needs
- May be co-existing with other conditions such as frailty, cognitive impairment, neurodevelopmental conditions or substance use



Multi-Sector
PCN MDT

Non-MDT
direct referrals



Mental Health Community Connector Service

- Holistic Social Prescribing Assessment - what matters to you?
- Onward supported referral to physical health support
- Liaison with RMBC Housing/SPA/ASC as req'd
- Enablement to attend apts – Health check, Vaccinations, Dental

Peer Support Service

- Wellness Recovery Action Plan
- 1:1 Peer Support
- Group Peer Support

Micro-Commissioned Support:

- Walking Groups
- Community Gyms
- Leisure Ctr Induction
- Gardening groups
- Cooking & nutrition
- Walking Football
- Bat & Chat
- Women's Football
- Swimming



8 Social
Prescribing
Community
Hubs



Wider VCS



Social Prescribing - Return on investment

Sheffield Hallam University's 4-year evaluation of the Rotherham Social Prescribing Service (published Aug 2024) identified:

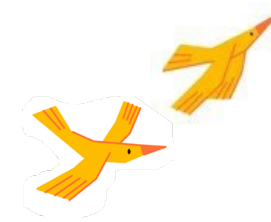
- **Reduced in-patient admissions** for all patients who had been admitted to hospital more than twice in the 12 months prior to RSPS support.
- **Reduced attendances at A&E** for patients below the age of 80 during the 12 months following RSPS support.

2024/25 the service helped individuals secure **£1.3m** in additional benefits

National Evaluation of the Preventing and Tackling Mental Ill Health through Green Social Prescribing Project

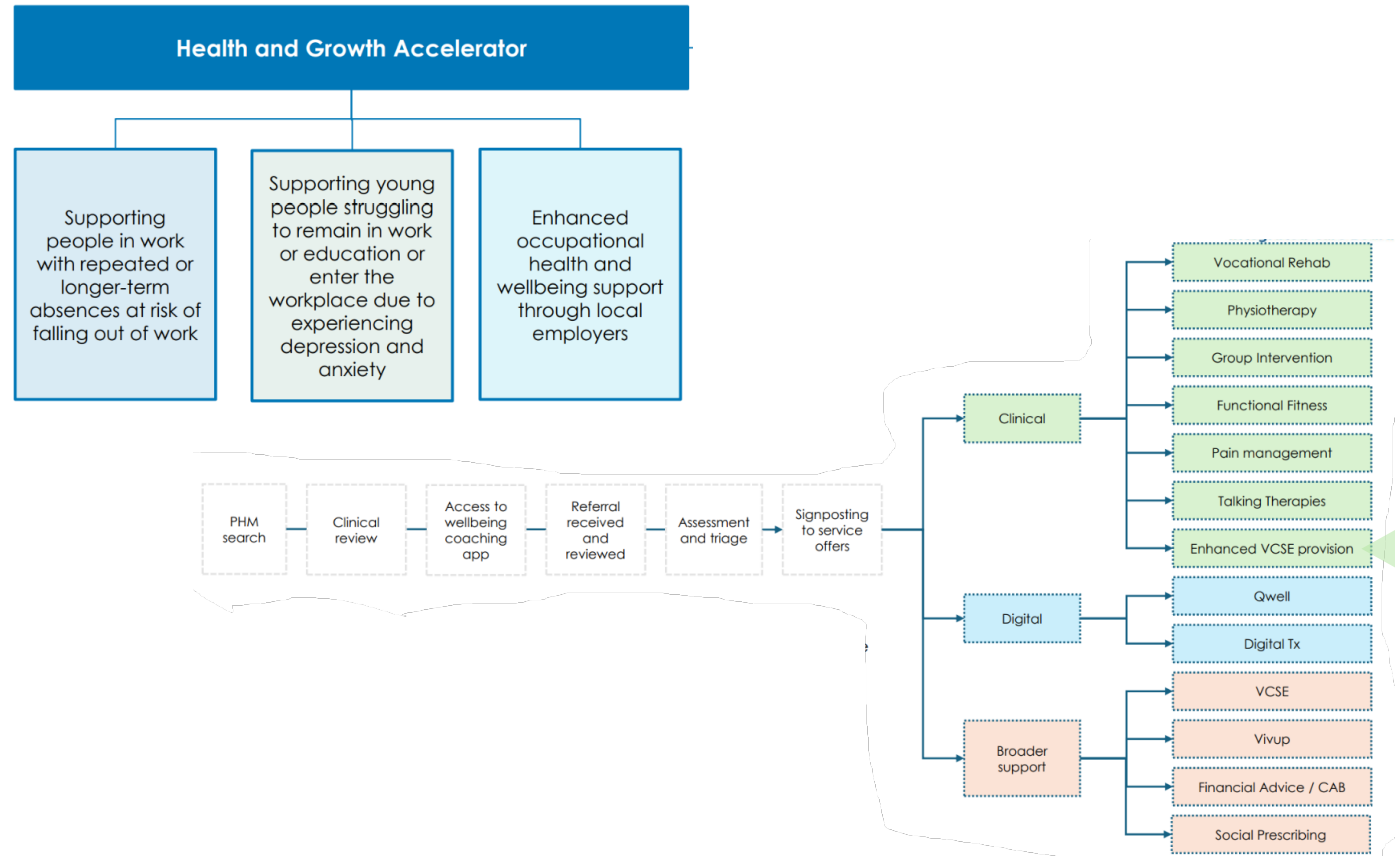


The social return on investment from funding for nature-based voluntary, community and social enterprise (VCSE) providers, was £11.49 for each £1 invested.



The national evaluation used the **HM Treasury WELLBY methodology** – a form of social return on investment (SROI) to measure the **value for money of wellbeing improvements** for participants in nature-based activities.

SY Health & Growth Accelerator – Enhanced VCSE provision

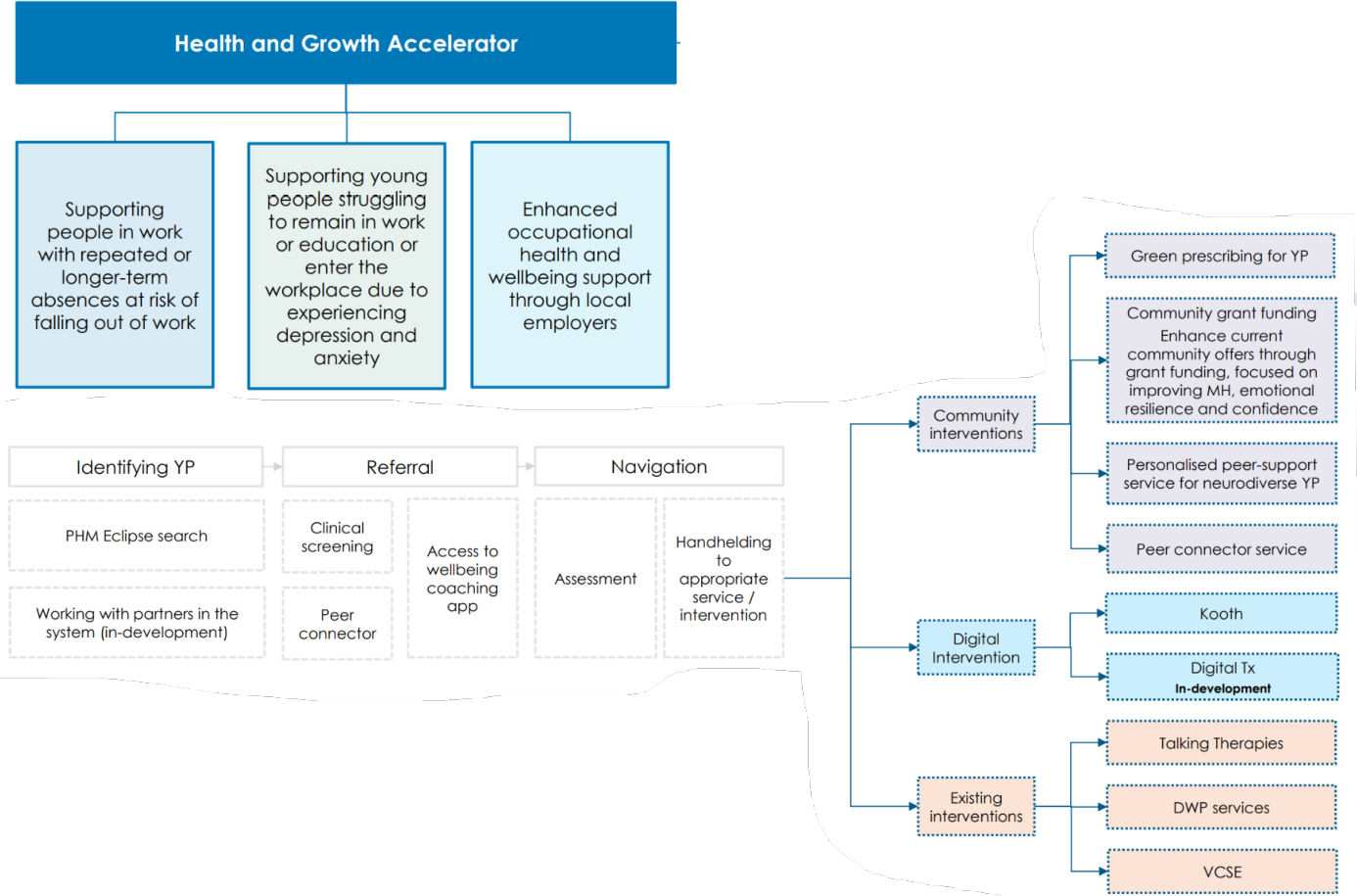


Priority 1 - Provision for adults:

- Neurodiverse wellbeing walks and community allotment
- Gym based exercise and education
- Counselling, resilience workshops and talk and train sessions
- Cooking, allotment, sports, soft skills, weight mgt, addiction support
- Community gym, yoga, pilates, walking and strength training
- Boxing, fitness, soft skills, goal setting
- Nature-connection wellbeing walks, heritage sessions, gardening



SY Health & Growth Accelerator – Enhanced VCSE provision



Priority 2 Provision for Young People aged 16-24yrs:

- Art, creative writing and group reflection
- Women & girls only creative therapies, walking & talking, trauma stabilisation
- Outdoor team building, digital, creative arts, gardening
- Online & in-person creative writing
- Neurodiverse wellbeing walks and community allotment





Children, Young People and Families' Consortium

STRONGER TOGETHER IN CHANGING LIVES

1) platform for vcs collaboration

We **facilitate collaboration** and promote excellent delivery standards by **uniting diverse organisations**, exchanging **skills, knowledge and learning**, sharing best practice and **enhancing community and service connections** in Rotherham.



2) joint-consortia projects

We **co-design** and **lead collaborative service models** to address local needs and strategic priorities, **empowering members** to deliver high-impact services more sustainably through **shared funding, pooled skills and expertise**, infrastructure support and **coordination**.



TRFT Youth
Worker
Pilot Project

SY ICB Health Growth
Accelerator Peer
Connector Service

3) representation and Partnerships

We **represent our members** and the communities they service **strategically** and **promote partnership working** across sectors to ensure that members, children, young people and families have a **voice** to **influence** policy and **change** things for the better.





FREE open access youth groups, activities and support for children and young people aged 8-19 or up to 25 with SEND.

Led by the CYPF Consortium and delivered by 10 member organisations, the project began in 2021 and will run until 2027.

The project so far...

4578 participants

6523 activities

36090 Attendances

Voluntary Action Rotherham - VCS Health & Care Infrastructure

**Rotherham
Gismo**



Community And
Leisure



Health And Wellbeing



Information And
Advice

rotherhamgismo.org.uk



**Rotherham Social
Prescribing Network**

