



Rotherham

Rotherham 
Metropolitan
Borough Council
Where Everyone Matters

The Rotherham Teenage Pregnancy Strategy

Annual Report 2010 - 2011

Teenage Pregnancy Strategy - Annual Report 2010 - 2011

CONTENTS:

PART ONE

Overview

U18 Conception Rates in Rotherham

U18 conceptions compared to Yorkshire & Humber region and England

Annual Report – In-depth data analysis covering:

- LARC Nurse
- CaSH
- Youth Start
- Help72
- Healthy Schools
- Targeted Projects

PART TWO

Priorities for 2012/13

APPENDICES

Acknowledgement

Part One **Teenage Pregnancy Strategy 2010-11 - Overview**

This report summarises the activity and outcomes from a range of services commissioned with the earmarked Teenage Pregnancy Grant. The report includes data for the financial year 2010/11 where this is available. There are however, other programmes of activity which support the Teenage Pregnancy Strategy which are not outlined in detail in this report.

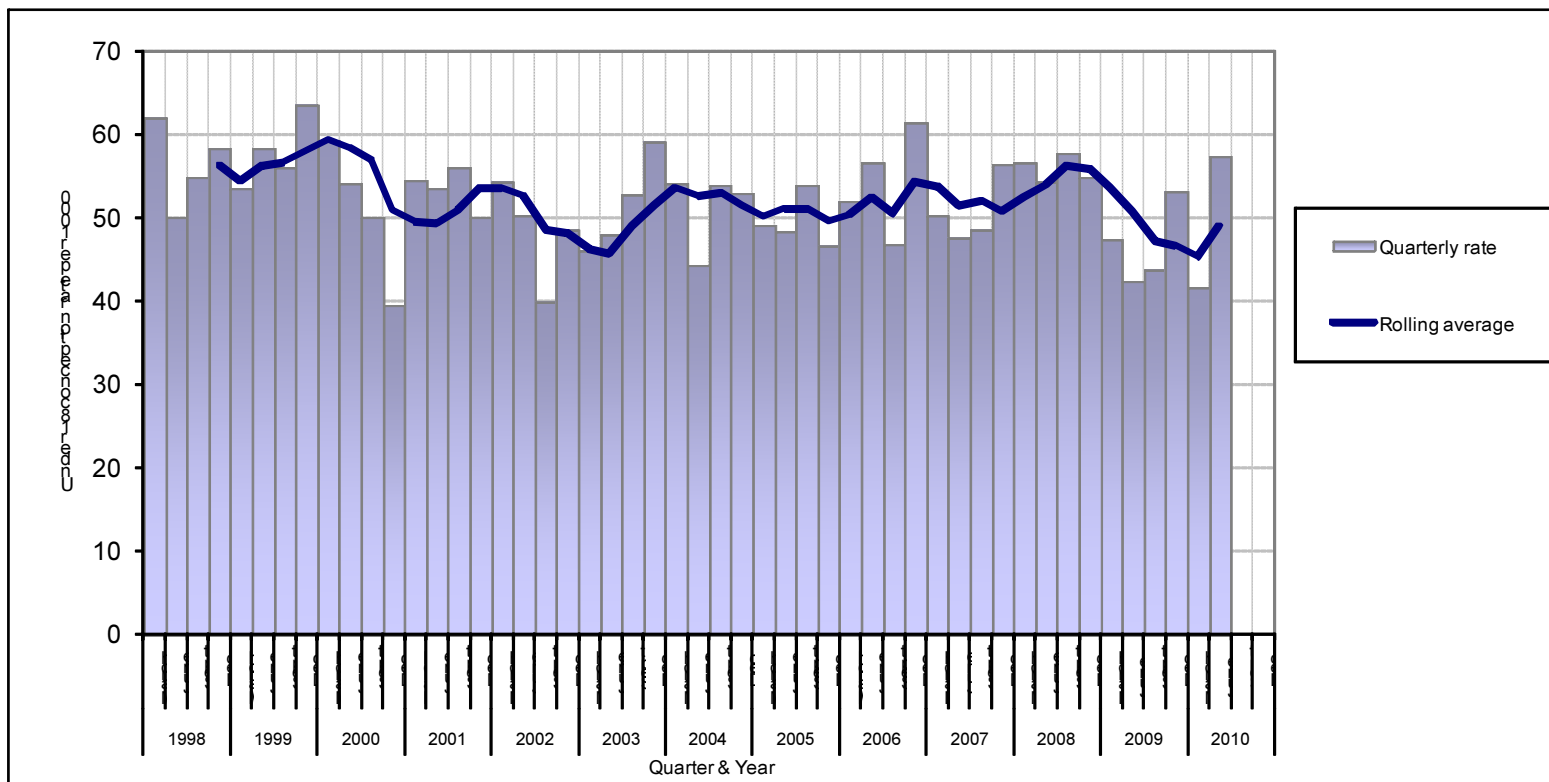
2010/11 has seen changes both at a national and local level. Nationally, the Teenage Pregnancy Strategy has ended and the Coalition Government has identified that teenage pregnancy will continue to be a priority within the context of eliminating child poverty by 2020.

Locally, there have been staffing and organisational changes which have led to difficulties in compiling and analysing the data and presenting meaningful information about the range of services which have been commissioned.

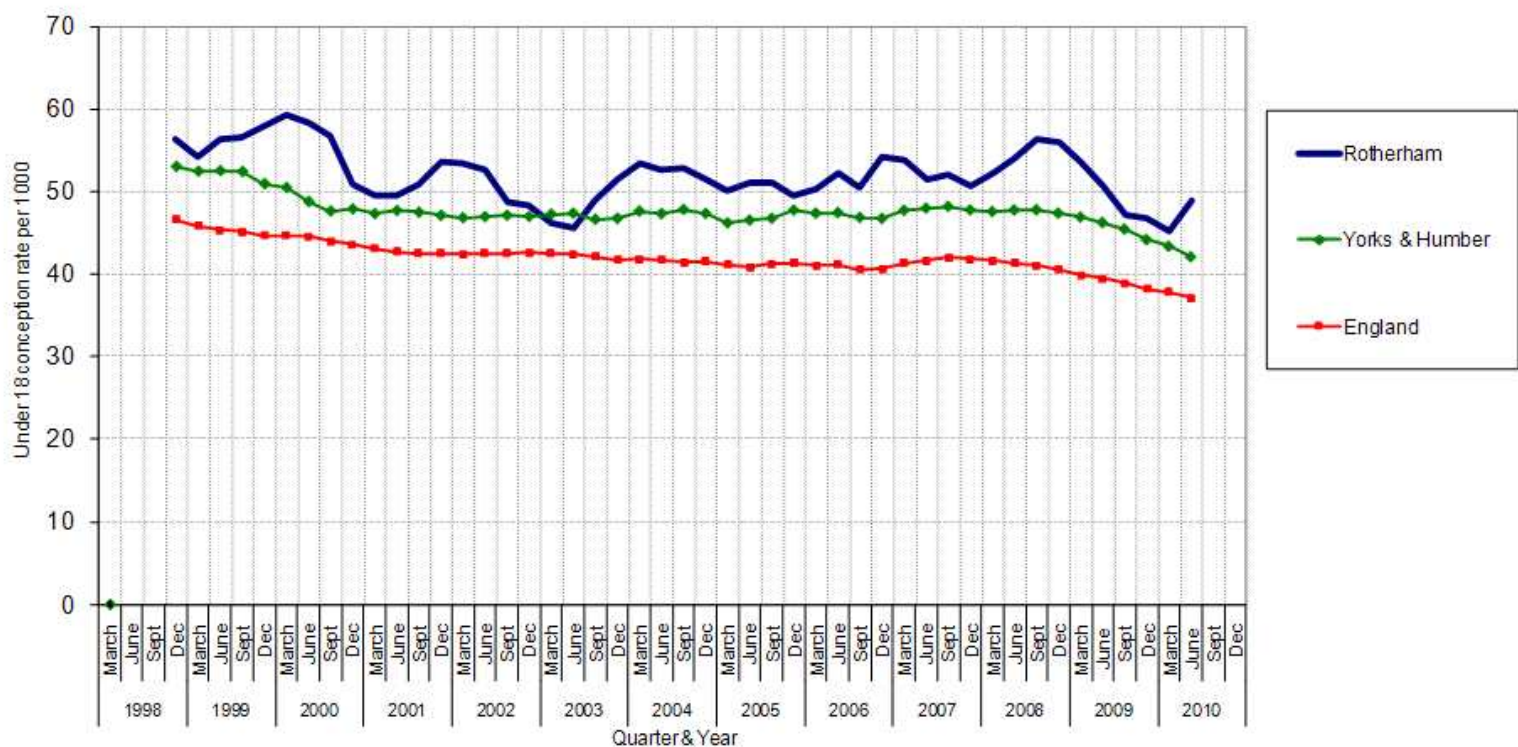
During this period, however, there has been a high level of financial support for teenage pregnancy work from both the ring-fenced grant and non-recurrent monies from NHS Rotherham.

The national 10 year Teenage Pregnancy Strategy aimed for a 50% reduction from the baseline. This was and continues to be a significant challenge for Rotherham, but a reduction in numbers of conceptions has been maintained.

U18 Conception rate by quarter 1998-2010



U18 conceptions by quarter 1998-2010 Rotherham compared to Yorkshire & Humber region and England



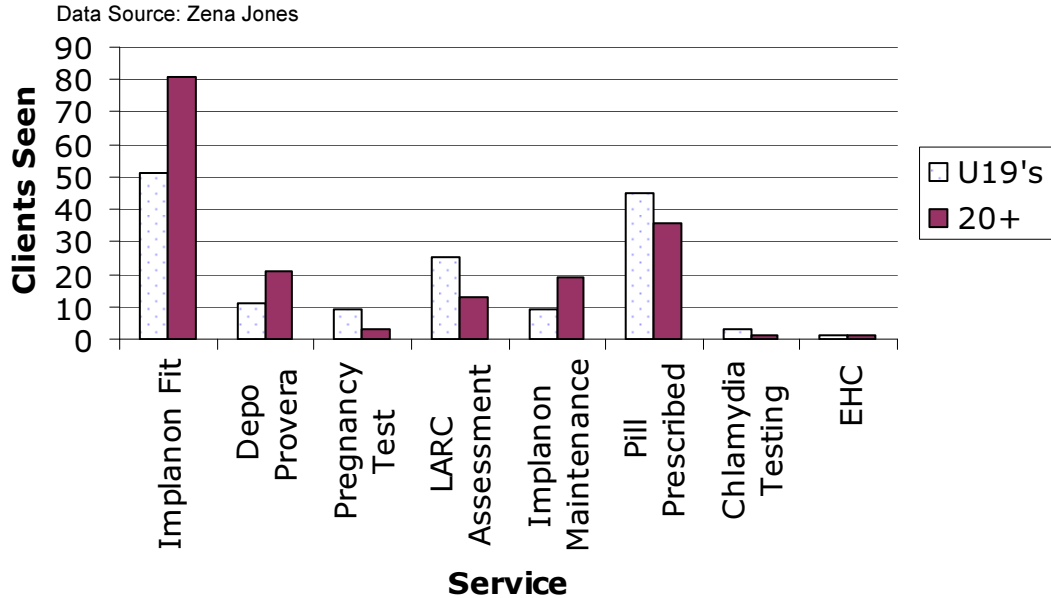
Long Acting Reversible Contraception (LARC)

Service	LARC				All Contraceptives				% of all Contraceptives			
	Q1	Q2	Q3	Q4*	Q1	Q2	Q3	Q4*	Q1	Q2	Q3	Q4*
CaSH >18	401	270	452	438	1396	884	1295	1598	29%	31%	35%	27%
CaSH <18	119	112	145	158	772	580	760	1139	15%	19%	19%	14%
GP Prescribing All ages	1721	1890	1860	1178	12792	9492	11054	12142	13%	20%	17%	10%
TOPS** 18+	54	80	82		105	120	129		51%	67%	64%	
TOPS** -18	5	13	14		11	23	18		45%	57%	78%	
Total	2300	2365	2553		15076	11099	13256		Mean: 31%	Mean: 39%	Mean: 43%	

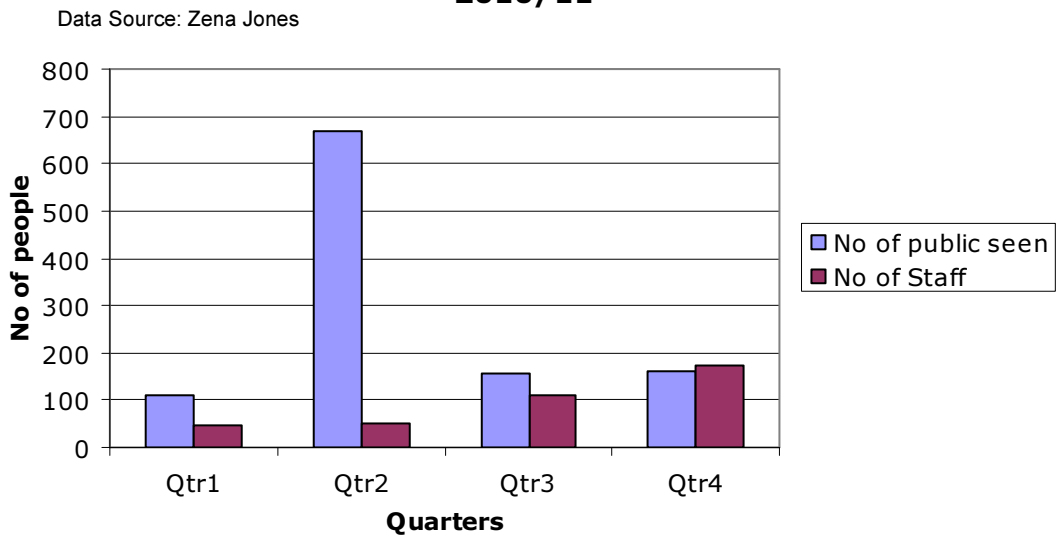
*Q4 data partially given

** Termination of Pregnancy

Services Provided by LARC Nurse 2010/2011



LARC Nurse - No of public and staff seen at events 2010/11



During 2010, 38% of all contraceptives provided by GPs, CaSH and the Termination of Pregnancy Service were long acting reversible contraceptives (LARC). This is a 6% increase on the previous year. This was during a high profile social marketing campaign which increased young peoples' access to information and services.

Contraception and Sexual Health Service (CaSH) and Youth Clinics

Data not available of time of completion of the report

The youth clinics are a partnership between CaSH (Contraceptive and Sexual Health Service) and the Youth Service. Young people access these services for free, confidential advice and information around sex and relationships. They are treated in a non-judgemental way and receive honest and accurate information in order to help them reach an informed decision about their relationships and sexual health. The Youth Workers role is to help the young person examine their situation and attitudes as well as delivering sex and relationships education and the nurse provides a variety of forms of contraception as well as medical support and information.

This provision of a young person-focussed sexual health service, which is well established, (the first clinic opened in 1990) and is trusted by young people has a high impact on conception rate reductions in Rotherham. Whilst providing a comprehensive range of appropriate contraceptive methods, the professionals working in the clinics play an important role in giving young people the knowledge and skills about sex and relationships to help build their resilience and raise aspirations. These clinics have been successful because of their informality, confidentiality, and appropriate time and place. This fosters an environment where frank discussions often take place, and encouragement to delay early sex and talk to parents/carers is nurtured. It also provides the opportunity for staff to help keep this vulnerable group safe by monitoring risks and sharing of appropriate information to reduce harm.

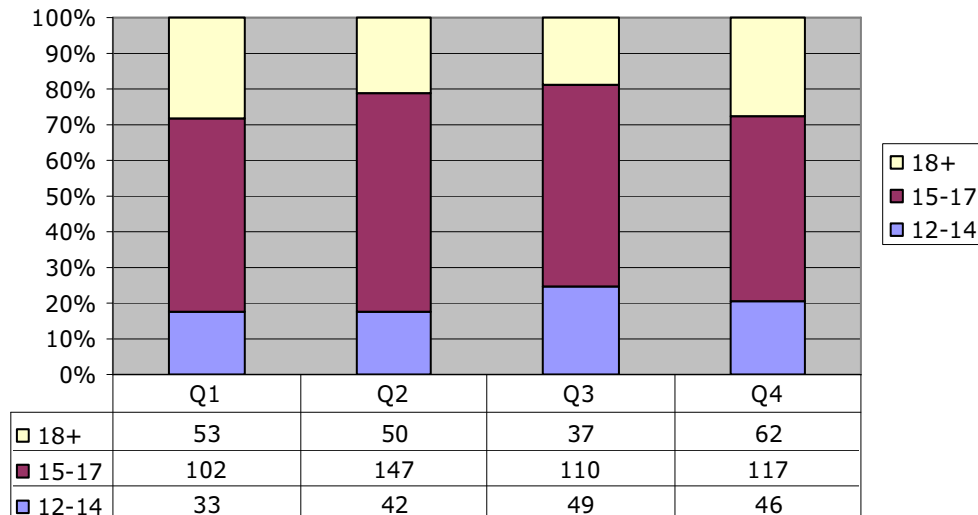
In addition to these clinics, the CaSH service provides nurse only sessions at Rowan Centre and Fleming Gardens on a monthly basis. This helps to achieve the outcome of reducing the number of second pregnancies to teenage mothers, thereby helping to reduce the numbers of NEET, and ease the burden on housing and benefit services.

Below is a snapshot of age comparisons of those young people who attended the Sexwise clinic based at Youth Start. In general, this age profile is mirrored across all the youth clinics in the Borough.

Youth Start

Age of young people attending Youth Start Clinics - Sexwise 2010/11

Data Source: Paul Boyden



Youth Start responds to young people presenting a range of complex issues, young people in crisis and preventative and early intervention support, particularly in relation to sexual health, relationships, mental health and emotional well being.

Non stigmatising, young people centred support is provided within a holistic service, which is neither overly medical nor problem orientated. This allows young people to feel safe in discussing sensitive, often inter related issues openly and in sharing their particular worries and concerns.

One to one sex and relationship support at Youth Start aims to help young people examine their own situation and attitudes and make informed decisions, as well as providing appropriate sex and relationship education and the necessary response to the specific worries frequently presented. Drop in sessions enable young people to access the help they need, when they need it, within a confidential environment they trust. Youth Start works in partnership with the Contraceptive and Sexual Health Service, helping to alleviate potential barriers to medical support and promoting the delivery of young people centred medical services. Youth Start also contributed to the delivery of the Chlamydia Screening programme.

The Early Intervention Grant support enabled Youth Start to provide drop in services for an additional 49 days during 2010 - 2011. Consequently, Youth Start was able to respond to 828 more requests for support from young people than would have been possible within existing resources.

Help 72 – Emergency Hormonal Contraception

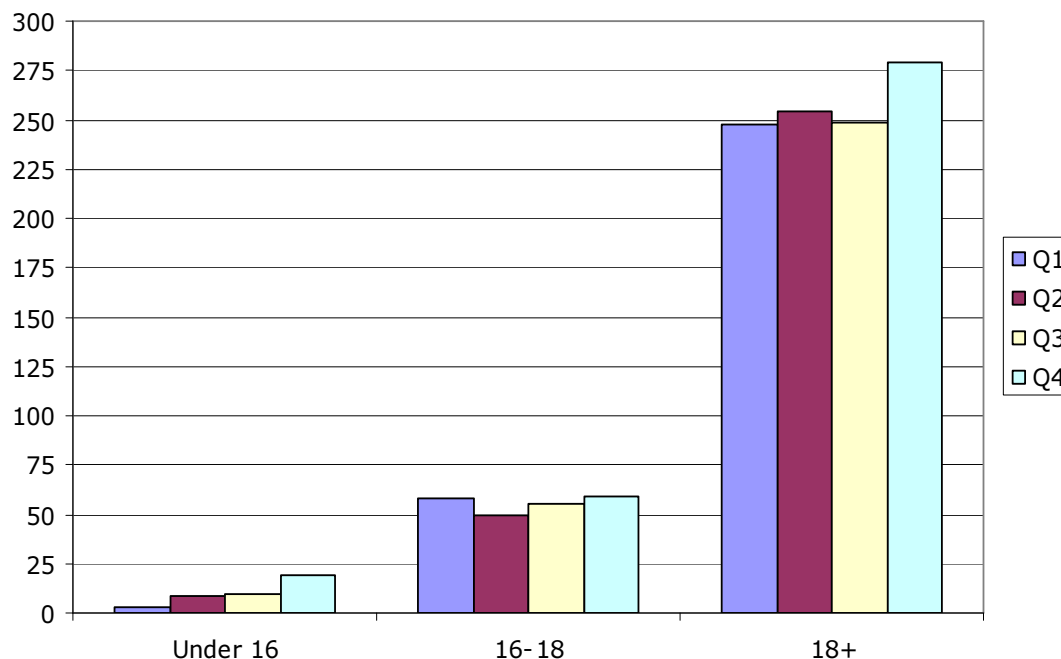
The local Emergency Hormonal Contraception (EHC) Scheme provides EHC free of charge to women. This service forms part of the previous Teenage Pregnancy Strategy and contributes to the reduction of conceptions (and terminations) in teenagers in the Borough by:

- Providing EHC free of charge to women from the age of 13 upwards
- Increasing awareness and access to EHC of young women
- Giving young women informal and confidential advice on Contraception/sexual health, by trained community pharmacists, on their local high street
- Increased partnership working and improved communication between Pharmacists and other Healthcare professionals
- Referral of young women to GP/sexual health services where Appropriate

Below is a graph for the Help 72 scheme for all four quarters for year 2010/11. The data show the total count of patients in each quarter that accessed the service who were under 16 years of age, between aged 16-18 and aged 18 and over.

A Quarterly Comparison of Help 72 Access 2010/2011

Data Source: Rebecca Stevens (LevonelleAgeBand Report)



However, since April 2011 the scheme only provides EHC to young women aged 16 years and over. The Pharmacists were concerned about safeguarding issues and felt unable to offer a service without additional training for staff. Even though the numbers of under 16s have been low, this is a particularly vulnerable group whose knowledge of support services could be poor due to minimal support from parents/carers and lack of sex education in school. This has left a significant gap in services in some parts of the Borough which are not served by Youth Clinics or other youth centre provision (e.g. Brinsworth and Aston). Any future local strategy/action plan would need to consider how it can try to address this issue so that we continue the positive decline in the under 16 conception rates (even though this is not the target against which we are measured) which is a safeguarding issue.

Healthy Schools

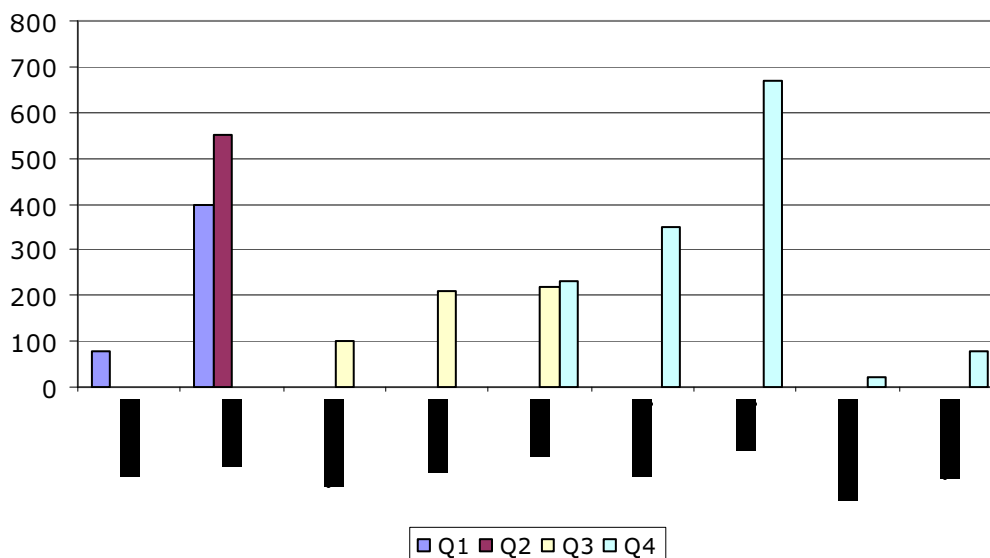
In order to support the Teenage Pregnancy strategy, the Healthy Schools Team aims to keep schools up to date with developments related to Relationships and Sexual Health Education (RSHE) and to promote new initiatives around good practice. As part of this we manage the PEP talks project in secondary schools; this aims to tell the story of how an unplanned pregnancy affects the life of the individual and the lives of those around them. We also support staff to teach RSHE more knowledgeably and confidently across the age range.

No of young children attending PEP talks 2010-11

		Q1	Q2	Q3	Q4
School/Centre	Dinnington	79	0	0	0
	Winterhill	400	551	0	0
	The Willows	0	0	100	0
	Rawmarsh	0	0	211	0
	Swinton	0	0	220	232
	Wickersley	0	0	0	350
	Maltby	0	0	0	669
	Rowan Centre	0	0	0	20
	The Bridge	0	0	0	80
	Total Number of children	479	551	531	1351
Number of PEP talks	18	19	20	51	

Number of students attending PEP talks 2010/11

Data Source: Kay Denton



Secondary schools are responsible for deciding when aspects of the curriculum are taught and to what age group, however, the booking form for PEP talks suggests that Year 9 and Year 10 are the appropriate age groups to be mature enough to deal with the issues raised.

2,490 students benefitted from PEP Talks during 2010 with larger schools having more students in each year group therefore more students receiving PEP Talks. We are changing the evaluation proformas for completion by students in order to gain more targeted feedback about the impact of the work.

Aims

- To contribute to the reduction of teenage pregnancies in Rotherham by keeping schools up to date with developments in the field of Relationships and Sexual Health Education (RSHE). We offer training, guidance and support to staff in schools to help them deliver high quality RSHE and raise awareness of new guidance, resources and initiatives available. We make links to appropriate external agencies that could contribute to the RSHE curriculum in schools and raise awareness of their availability to enhance the existing RSHE curriculum.
- To contribute to the reduction of STIs amongst under 25 year olds in Rotherham by supporting secondary schools to deliver high quality STI education within RSHE and raising awareness of local trends, information, external agency support and resources available.

Young Women's Targeted Projects funded by NHS Rotherham

The work of the Young Women's Targeted Projects (YWTP) aims to support young women who are at risk of teenage pregnancy by working with them over a period of time, helping them make informed decisions and make positive changes in their lives that will prepare them to become happy and healthy adults. By using a range of early interventions involving education, information, and support, (along with contraception provision and advice) the YWTP have already played a part in helping to reduce of the number of teenage pregnancies in the Rotherham area over the last few years. This not only includes the number of live births but also the number of conceptions. Sitting within the Early Intervention Team means that it provides a 'wrap around' service for young people ensuring the best possible outcomes can be achieved.

This project provides 3 tiers of intervention:

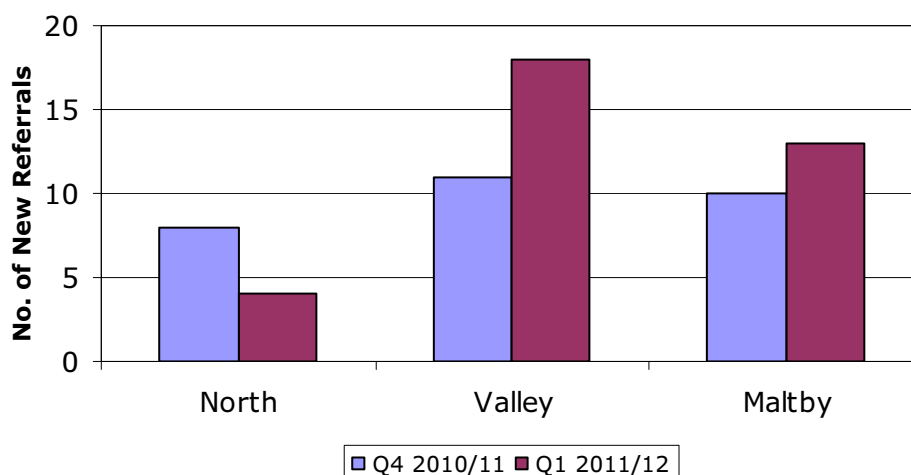
- Intense 1:1 support for young women
- Small group work within an educational focus
- Support to schools and other agencies working in partnership to enable young women to have access to new and different provision so that they can have other life experiences and accurate and timely information.

The work is successful because it is young person centred i.e. holistic and personalised. The staff work closely with other professionals to ensure that they have correct and current information about each young woman and their particular needs, to provide an individual package and secure the best outcomes for the young women. This also provides an early alert to a range of emerging and potential issues, enabling them to be proactive rather than reactive in dealing with a range of problems and safeguarding concerns and to ensure young people and families are signposted promptly to the partner services they need.

In 2010/11 the three Projects received 156 referrals over the year. The table below shows a comparison between Q1 and Q4:

New Referrals to Targeted Projects during Q4 compared to Q1 2010/11

Data Source: Ann Berridge

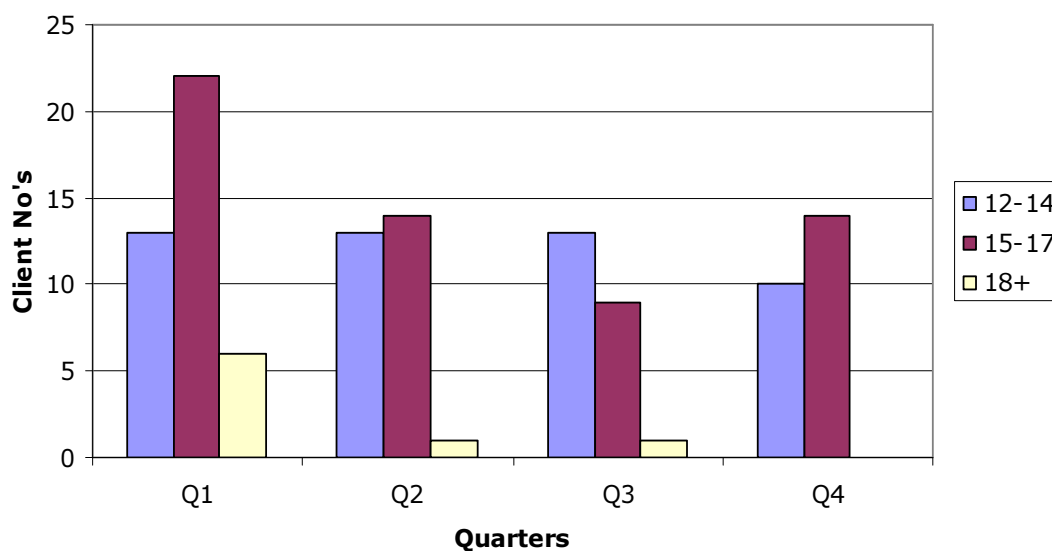


All the young women worked with have an opportunity to achieve through accredited learning. Either, a Local Award, NOCN or Asdan activity awards are offered in a range of options, from Raising Self Esteem, Healthy Lifestyles, Baby Stop Think to residential opportunities. The Projects achieved 180 accredited outcomes for the year in 2010/11.

The Projects also continued to support the Chlamydia Screening Programme by achieving 273 completed tests over the financial year, which exceeded their target of 35% of their client group. The testing facility continues to be offered within the youth clinic network since the termination of the Terrance Higgins Trust (THT) contract.

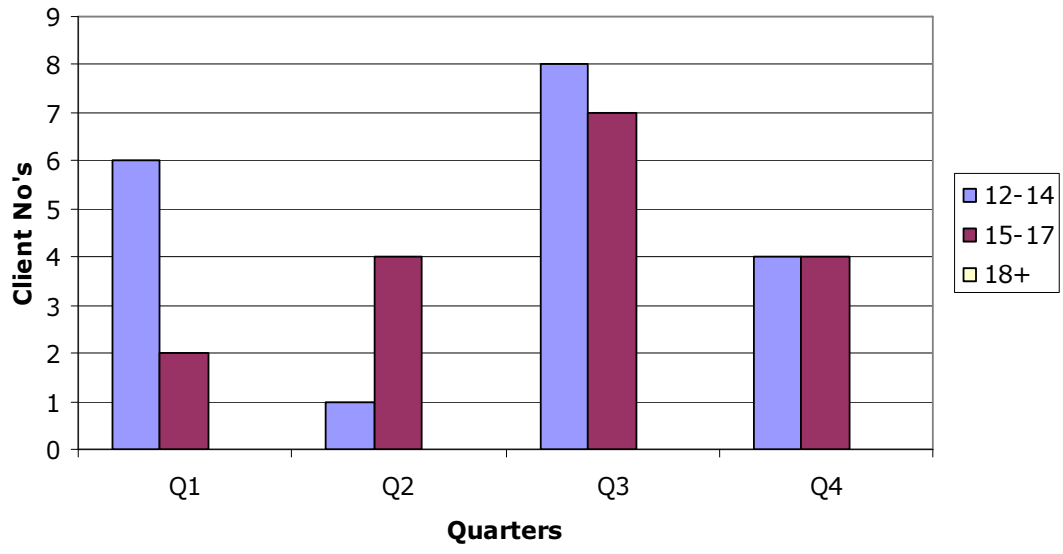
Continued Clients - North 2010/11

Data Source: Ann Berridge



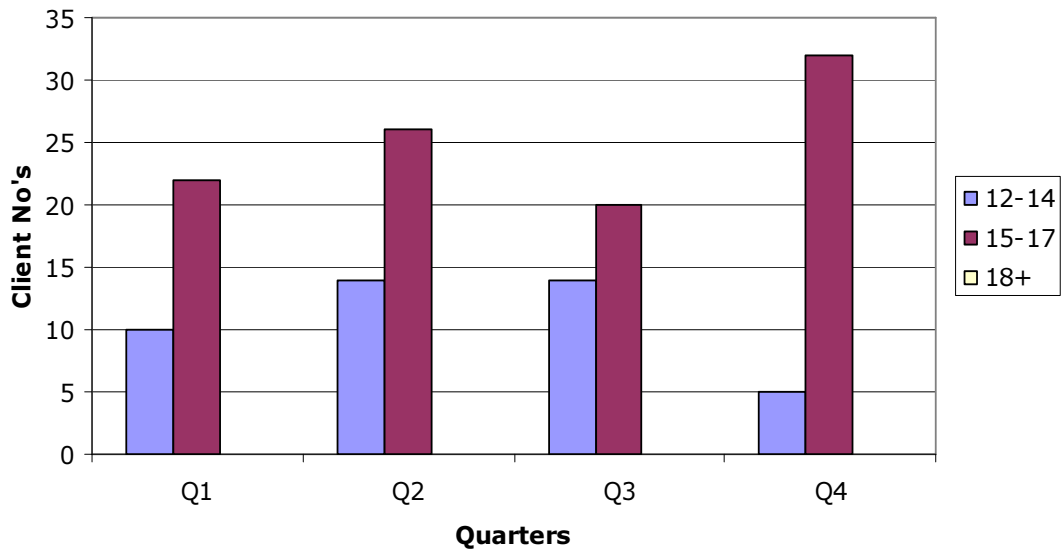
New Referrals - North 2010/11

Data Source: Ann Berridge



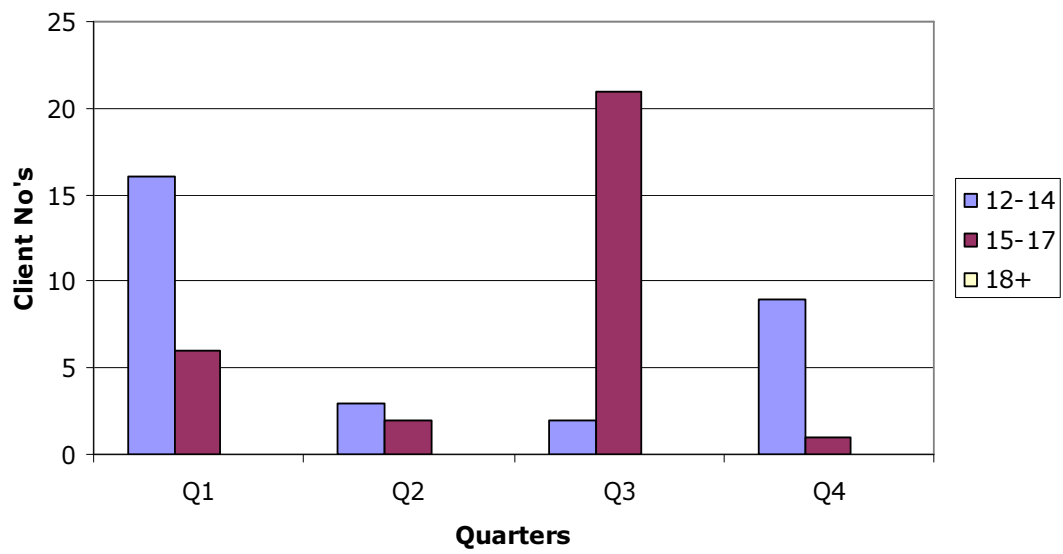
Continued Clients - Maltby 2010/11

Data Source: Ann Berridge



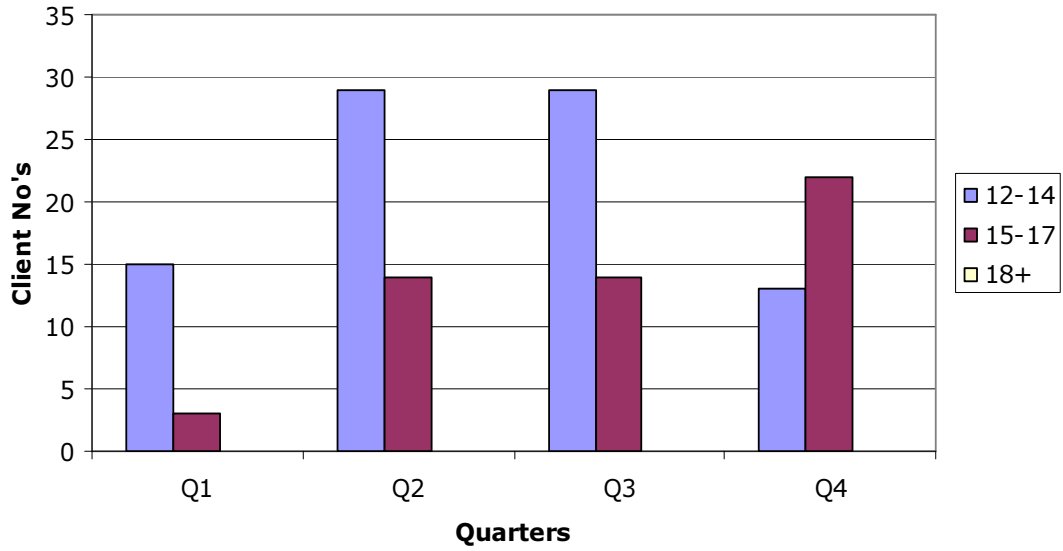
New Referrals- Maltby 2010/11

Data Source: Ann Berridge



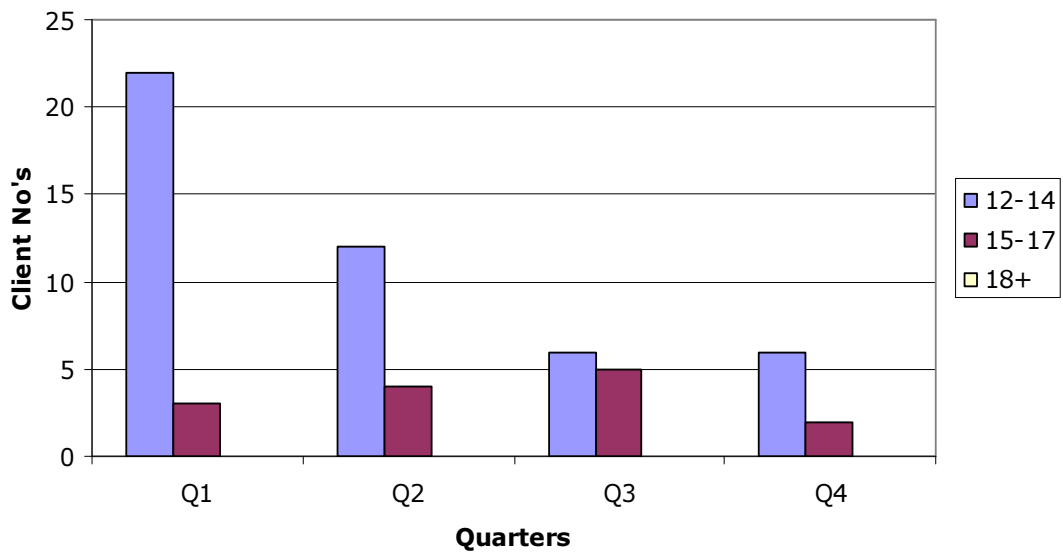
Continued Clients - Valley 2010/11

Data Source: Ann Berridge



New Referrals - Valley 2010/11

Data Source: Ann



Shield

Shield offers holistic support to people living with HIV and/or Hepatitis C. and has continued to deliver its awareness work across the Borough with key activities in Clifton, Wickersley and Rawmarsh. Shield's speakers delivered sessions on living with HIV and formed an integral part of the PSHE curriculum delivered.

Shield was also a placement agency for the Embedded Ambassador Scheme, with a young person from Rotherham coming to the agency to volunteer at our support groups and write a report on young people's involvement in Shield.

Qualitative and quantitative information is collected – examples include the following:

Speaker Sessions: (Drop down days, week long programmes, single sessions in a yearly programme)

- Rawmarsh Community School - 2 sessions
- Wickersley School and Sports College - 8 sessions
- Clifton Comprehensive - 6 sessions

In total Shield spoke to approximately 510 across the quarter.

Professional Training Sessions:

- Rotherham NHS Sexual Health Training Day at Oak House - Part of Teenage Pregnancy Strategy Training programme

Meetings attended:

- Sexual Health Core Meetings

Young Peoples Placements – Young Embedded Ambassador – 3 month placement to evaluate how Shield involves young people and ideas for the future.

Quote from a member of teaching staff:

'As always our students are engaged, moved and go away with a greater understanding of HIV and its impact on lives as a result of your input.

Thank you!

Jackie Butler, Wickersley

Part Two

Priorities for 2012/2013

To review the strategy and action plan for sexual health and teenage pregnancy including the mapping of existing services and gaps in provision and in the context of the reduced budget.

To consider the impact of Family Nurse Partnership on other services that provide support to young parents (e.g. the GROW Teenage Parents Pathway funded by NHR).

To consider the gaps in provision of Emergency Hormonal Contraception for under 16s left by pharmacists.

The implementation of the revised Chlamydia testing programme and its impact on the commissioned activity.

To consider how to better support young men through a series of interventions.

Acknowledgements

Thank you to the following that provided information for the completion of the Annual Report:

Targeted Projects - Ann Berridge – ann.berridge@rotherham.gov.uk

Targeted Projects - Vicky Whitehead – Vicky.whitehead@rotherham.gov.uk

SRE and Healthy Schools - Kay Denton-Tarn

kay.denton@rotherham.gov.uk

CaSH Data - Alicia Gray – Alicia.gray@rothgen.nhs.uk

RMBC – Sue Wilson – sue-cyps.wilson@rotherham.gov.uk

RMBC - Emma Soames – emma.soames@rotherham.gov.uk

RMBC - Zoe Burke

LARC – Zena Jones -

Youth Clinics - Paul Boyden – Paul.boydon@rotherham.gov.uk

Local and National graphs - Marcus Williamson –

Marcus.williamson@rotherham.nhs.uk

Help72 - Rebecca Stevens – Rebecca.stevens@rotherham.nhs.uk

Shield - Zoe Davies - zoe@shield.org.uk