

ROTHERHAM BOROUGH COUNCIL – REPORT TO MEMBERS

1.	Meeting	Cabinet
2.	Date	30/04/2014
3.	Title	Teenage Pregnancy data update
4.	Directorate	Public Health

5. Summary

This report provides an update on the progress of reducing Teenage Pregnancy rates in Rotherham.

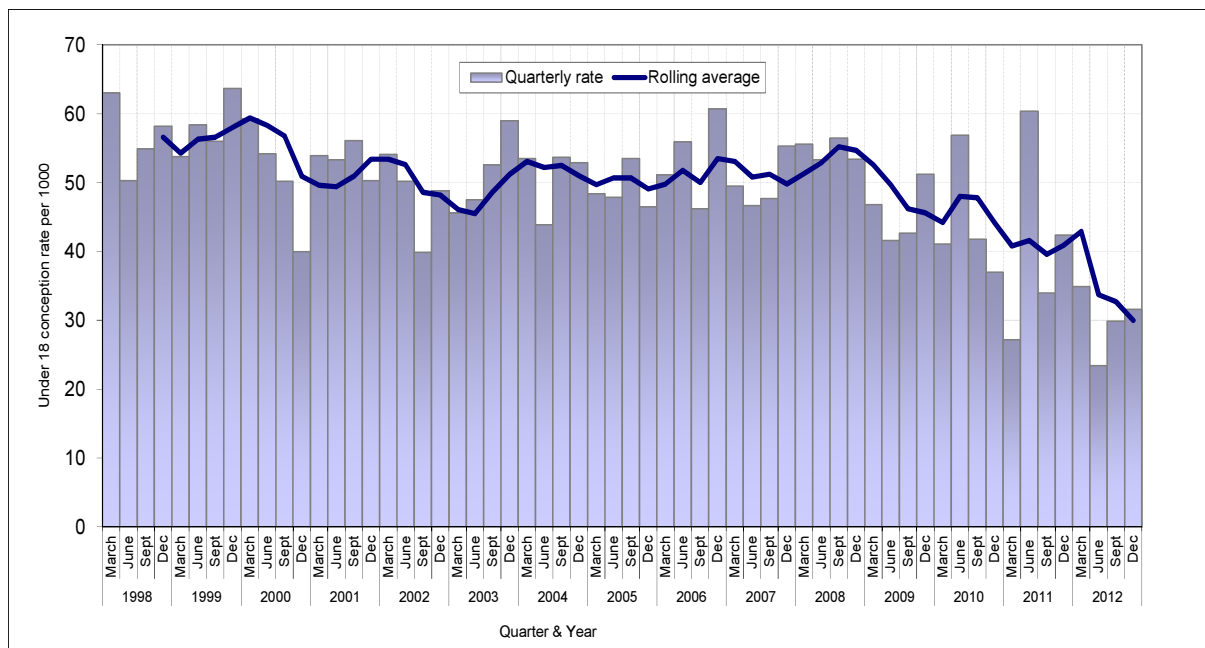
6. Recommendations

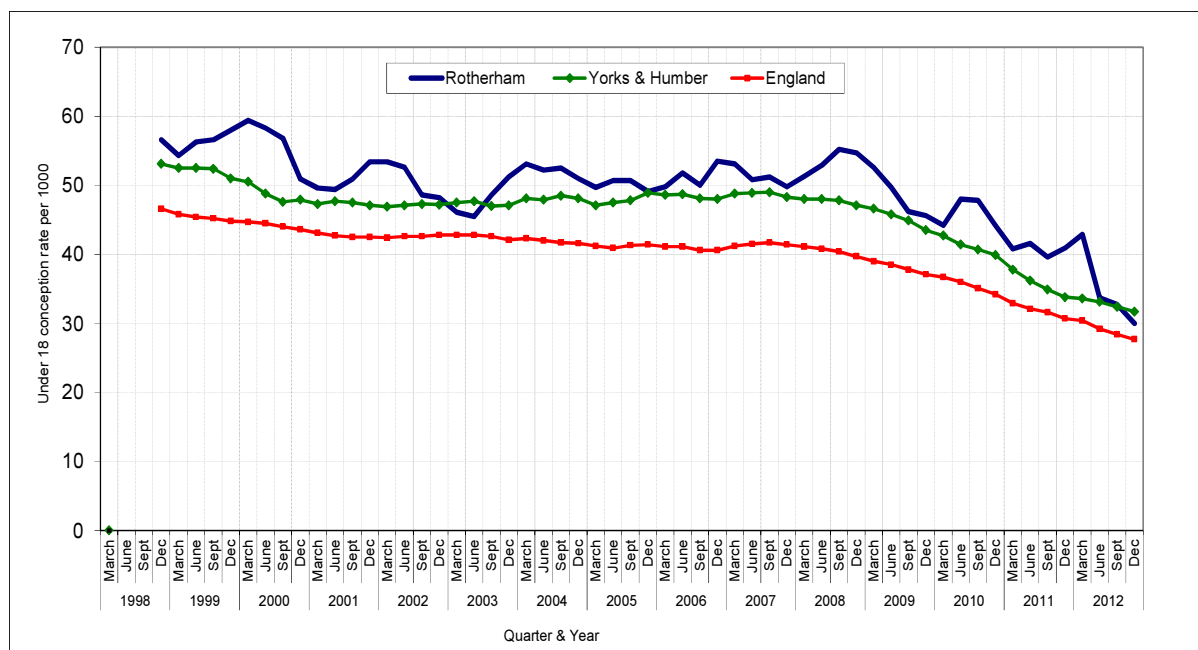
- a) **To note the progress in the reduction of the Teenage Pregnancy rate in Rotherham**
- b) **To recognise that the progress has been achieved by a variety of projects and services that are currently subject to significant cuts in funding.**

7. Proposals and details

In 1998 national targets were set to reduce teenage conceptions by 50% and establish a firm downward trend in the under-16 conception rate and to increase the proportion of teenage parents in education, training or employment by 2010, to reduce their risk of long-term social exclusion. In 1998, Rotherham had a rate per 1000 15-17 year old females of 56.4. Therefore, Rotherham's target was to achieve a 50% reduction in this rate to 28.2 by 2010. Over the last 5 years Rotherham has made a significant impression on this very ambitious target. ***The annual teenage pregnancy rate has fallen to its lowest in the period 1998-2012 to 30.0 conceptions per 1,000 females aged 15-17 (2012).*** This represents a 26.7% decrease since the 2011 rate of 40.9. Rotherham's 2012 rate is the lowest rate in South Yorkshire and is close to the England rate of 27.7 (and to Rotherham's 2010 target of 28.3).

The following tables show Rotherham's progress since 1998 and comparison with local and statistical neighbours.





Rate per 1,000 Females aged 15-17

Area of usual residence	1998	1999	2000	2001	2002	2003	2004	2005	2006	2007	2008	2009	2010	2011	2012	1998-2012 % change in rate
England	46.6	44.8	43.6	42.5	42.8	42.1	41.6	41.4	40.6	41.4	39.7	37.1	34.2	30.7	27.7	-40.6
Yorkshire and the Humber	53.1	51.0	47.9	47.1	47.2	47.1	48.1	48.9	48.0	48.3	47.1	43.5	39.9	33.8	31.7	-40.3
Rotherham	56.6	58.0	50.9	53.4	48.2	51.2	51.0	49.1	53.5	49.8	54.7	45.6	44.2	40.9	30.0	-47.0
Doncaster	73.7	65.9	69.3	60.0	63.3	67.3	61.5	58.2	53.0	56.5	64.3	48.7	53.3	35.2	38.2	-48.2
Redcar and Cleveland UA	58.3	57.4	57.0	54.5	48.5	48.3	58.7	51.8	48.6	49.0	46.3	49.6	45.5	47.0	35.4	-39.3
Wigan	53.6	59.1	54.9	51.4	53.9	51.8	50.9	57.6	51.7	52.7	49.0	49.6	46.9	34.7	32.0	-40.3
Barnsley	60.2	57.4	52.1	51.8	52.1	57.7	50.7	53.7	49.4	50.4	52.1	52.8	54.5	44.1	41.3	-31.4
Sheffield	50.5	53.4	50.1	52.6	56.6	53.8	55.7	53.0	50.3	49.0	42.7	39.0	38.7	35.2	30.3	-40.0

Number of Conceptions

Area of usual residence	1998	1999	2000	2001	2002	2003	2004	2005	2006	2007	2008	2009	2010	2011	2012
England	41,089	39,247	38,700	38,461	39,350	39,553	39,593	39,804	39,170	40,366	38,783	35,966	32,552	29,166	26,157
Yorkshire and the Humber	4,806	4,617	4,406	4,437	4,529	4,589	4,698	4,779	4,692	4,798	4,700	4,288	3,823	3,231	3,000
Rotherham	266	271	238	257	235	255	257	251	280	261	285	233	218	201	144
Doncaster	400	361	386	344	378	412	381	358	327	345	386	284	310	204	217
Redcar and Cleveland UA	162	161	162	162	143	143	173	152	139	140	132	139	121	118	86
Wigan	297	330	310	296	316	310	307	346	314	324	303	304	276	202	185
Barnsley	227	223	207	209	215	243	215	231	215	226	231	230	236	191	179
Sheffield	431	450	424	448	488	472	498	478	456	473	432	394	368	321	277

The reduction in teenage pregnancy in Rotherham is commendable, and has been delivered with the support of a range of high quality services and provision. The challenge now is to build on progress without ring-fenced funding and during a period of budgetary challenge. In order to support this, Rotherham has sought to ensure this is steered by a comprehensive teenage pregnancy plan. Although there is no current national strategy to drive this agenda, Coalition Government policy has reiterated its commitment to reducing teenage conceptions linking this to the implications of teenage parenthood with child poverty and this is also echoed by local strategies and plans.

Rotherham Public Health Team along with partners has developed a local Teenage Pregnancy Plan to continue to monitor progress and to ensure that services are reaching the most vulnerable young people presenting as teenage parents. Young women presenting as pregnant have increasingly complex health, wellbeing and social issues and over a third are NEET. The majority of young women are from Rotherham's most deprived neighbourhoods.

8. Finance

Teenage Pregnancy prevention work and Teenage Pregnancy care pathway are funded and delivered by a range of organisations including Rotherham Clinical Commissioning Group, NHS England, Rotherham Public Health, The Rotherham Foundation Trust, GROW, Family Nurse Partnership, The Integrated Youth Support Service, Genito-urinary Medicine, Contraception and Sexual Health Service and the Rotherham School Nursing service. Activity relating to both the prevention and support activities are within service contracts and most are facing significant reductions in funding.

9. Risks and Uncertainties

Reductions in funding within a range of services that provide support for both the teenage pregnancy prevention agenda and teenage pregnancy support services may impact on or reverse the continued progress of reducing Teenage Pregnancies in Rotherham.

10. Policy and Performance Agenda Implications

Under 18 conceptions are a health improvement indicator with the Public Health Outcomes Framework (2012). RMBC Public Health will continue to be accountable for this target and reducing the number of Teenage pregnancies across the borough.

11. Background Papers and Consultation

Local Government Association (2013) Tackling teenage pregnancy: local government's new public health role

Teenage Pregnancy Independent Advisory Group (2010) Teenage Pregnancy Past Successes – Future Challenges

Public Health England (2012) Public Health Outcomes Framework

12. Anna Clack

Public Health, Health Improvement
Telephone: 01709 255872
E-mail: anna.clack@rotherham.gov.uk