

# Rotherham Public Health

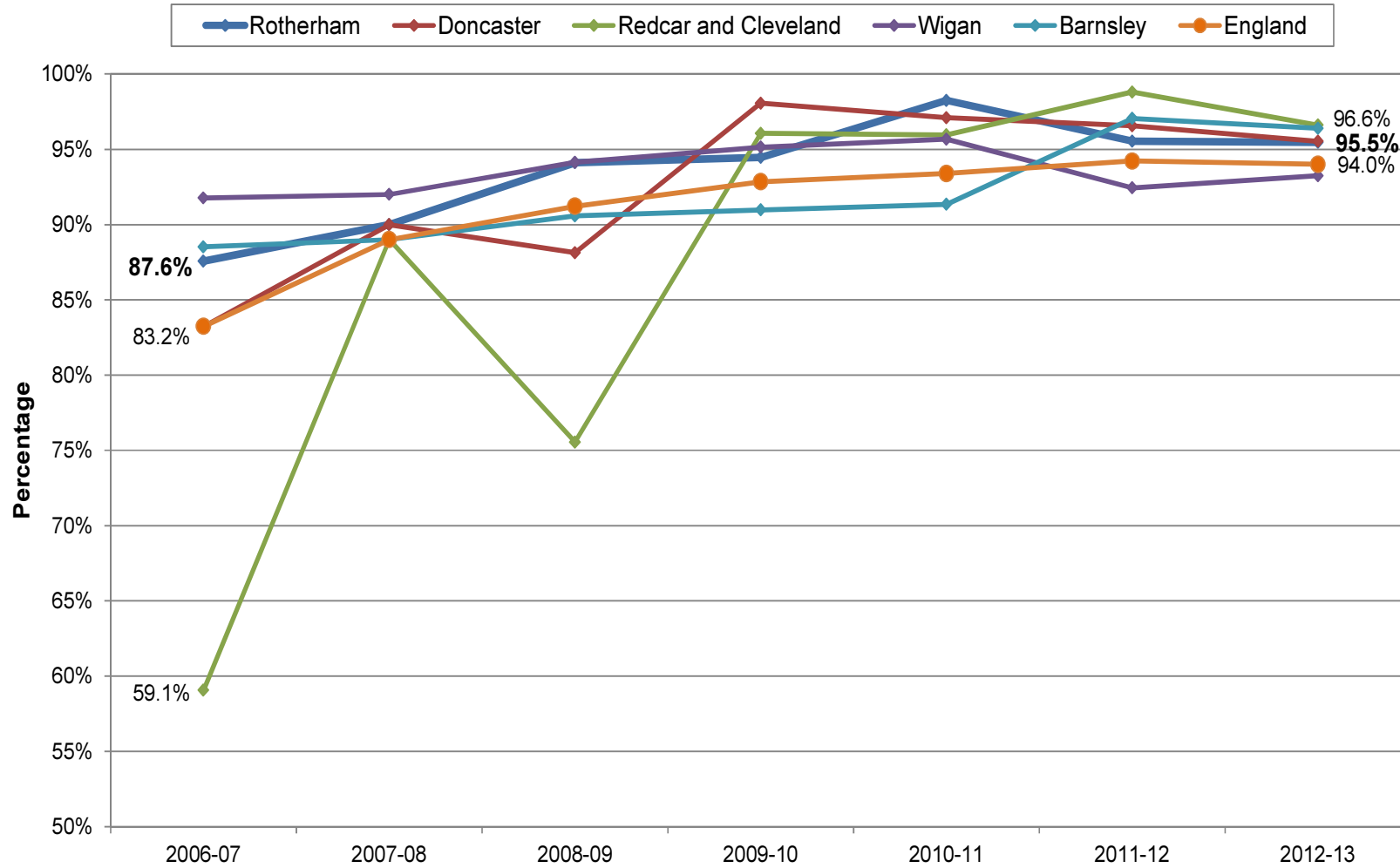
## National Child Measurement Programme Data Rotherham Summary 2006/07 to 2012/13

Marcus Williamson, Catherine Homer & Joanna Saunders  
Rotherham Public Health  
September 2014

## Presentation will cover.....

- NCMP Participation rates
- Prevalence of overweight and obesity-reception & year 6
- Excess Weight prevalence by ward-reception & year 6
- Rotherham Healthy Weight Framework

**NCMP Childhood Obesity Data  
Participation Rates by Year - 2006/07 to 2012/13  
Rotherham Compared to its Statistical Neighbours - Reception Year Children**



**NCMP Childhood Obesity Data  
Participation Rates by Year - 2006/07 to 2012/13  
Rotherham Compared to its Statistical Neighbours - Year 6 Children**

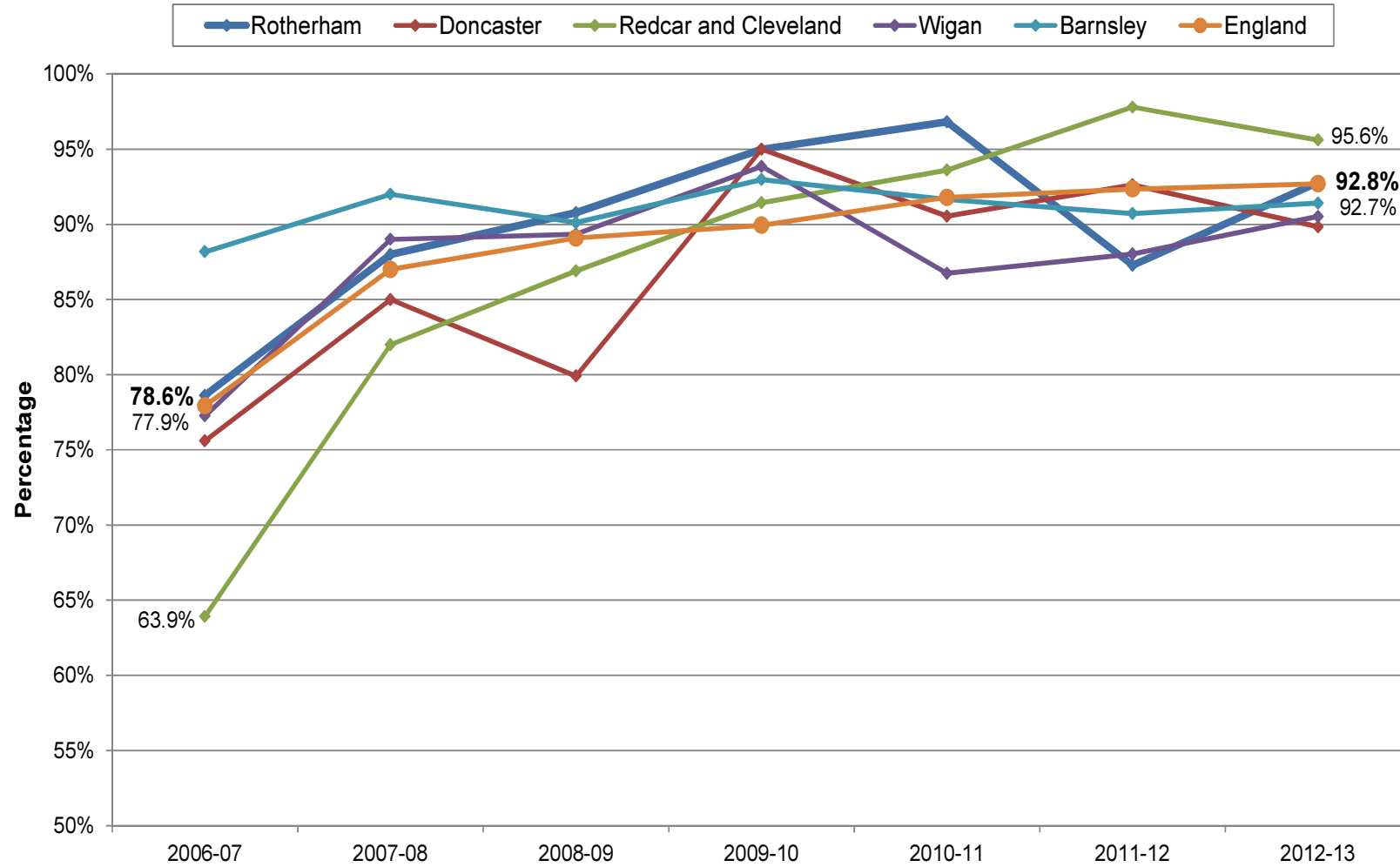
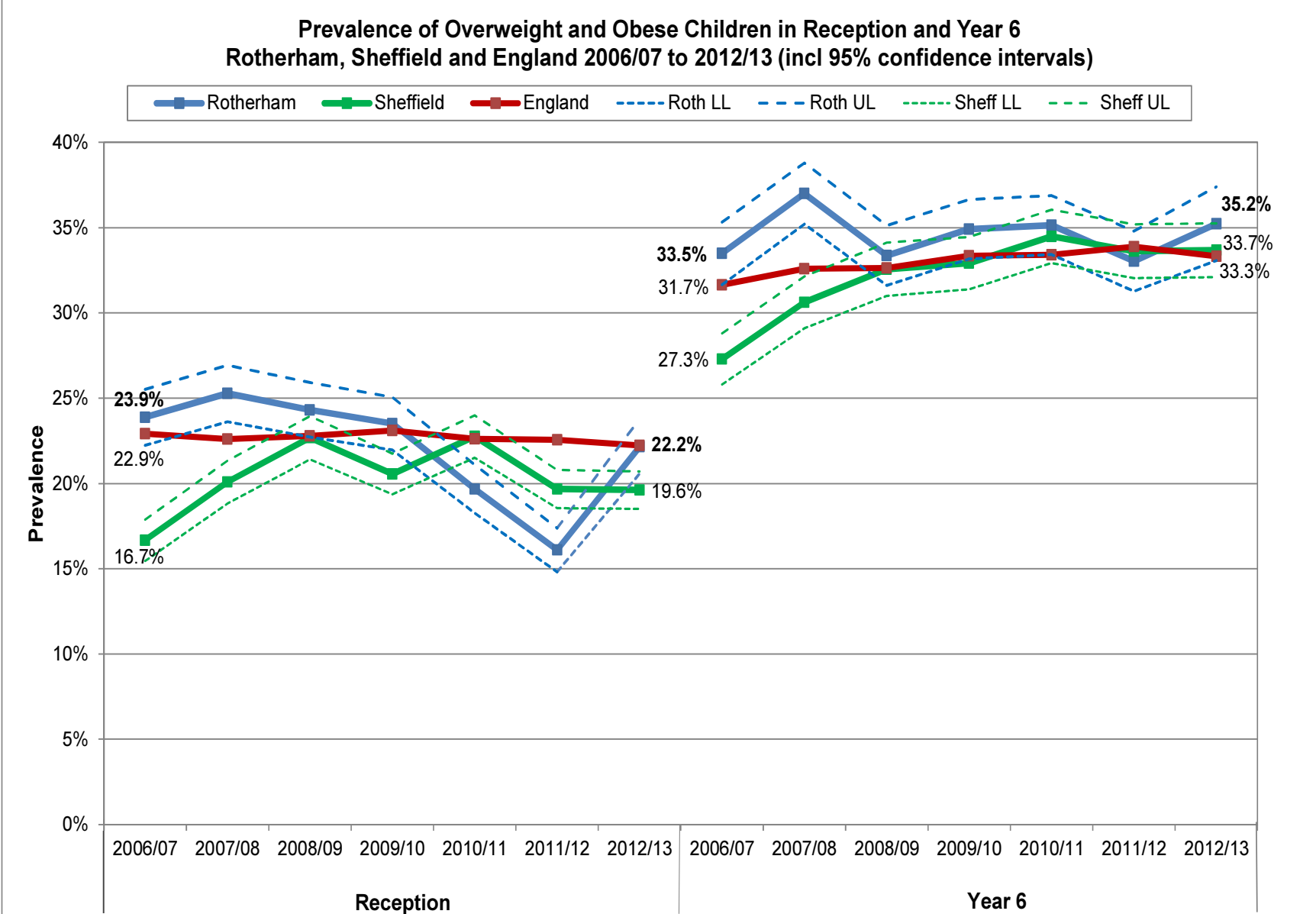


Chart 3



Copyright © 2013. Re-used with the permission of the HSCIC. All Rights Reserved.

Source: Health and Social Care Information Centre, Lifestyle Statistics/Public Health England.

Chart 6 - Reception

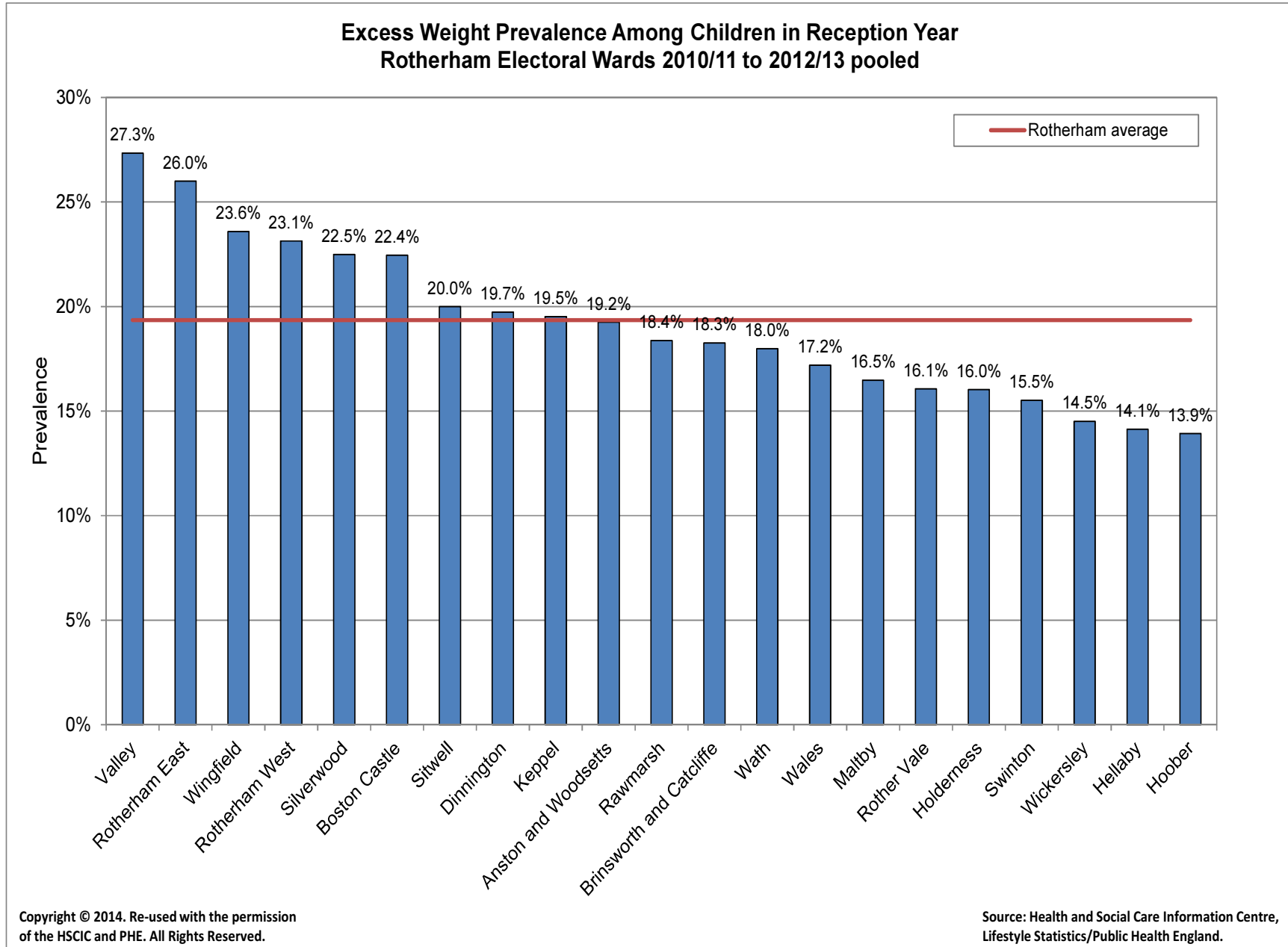
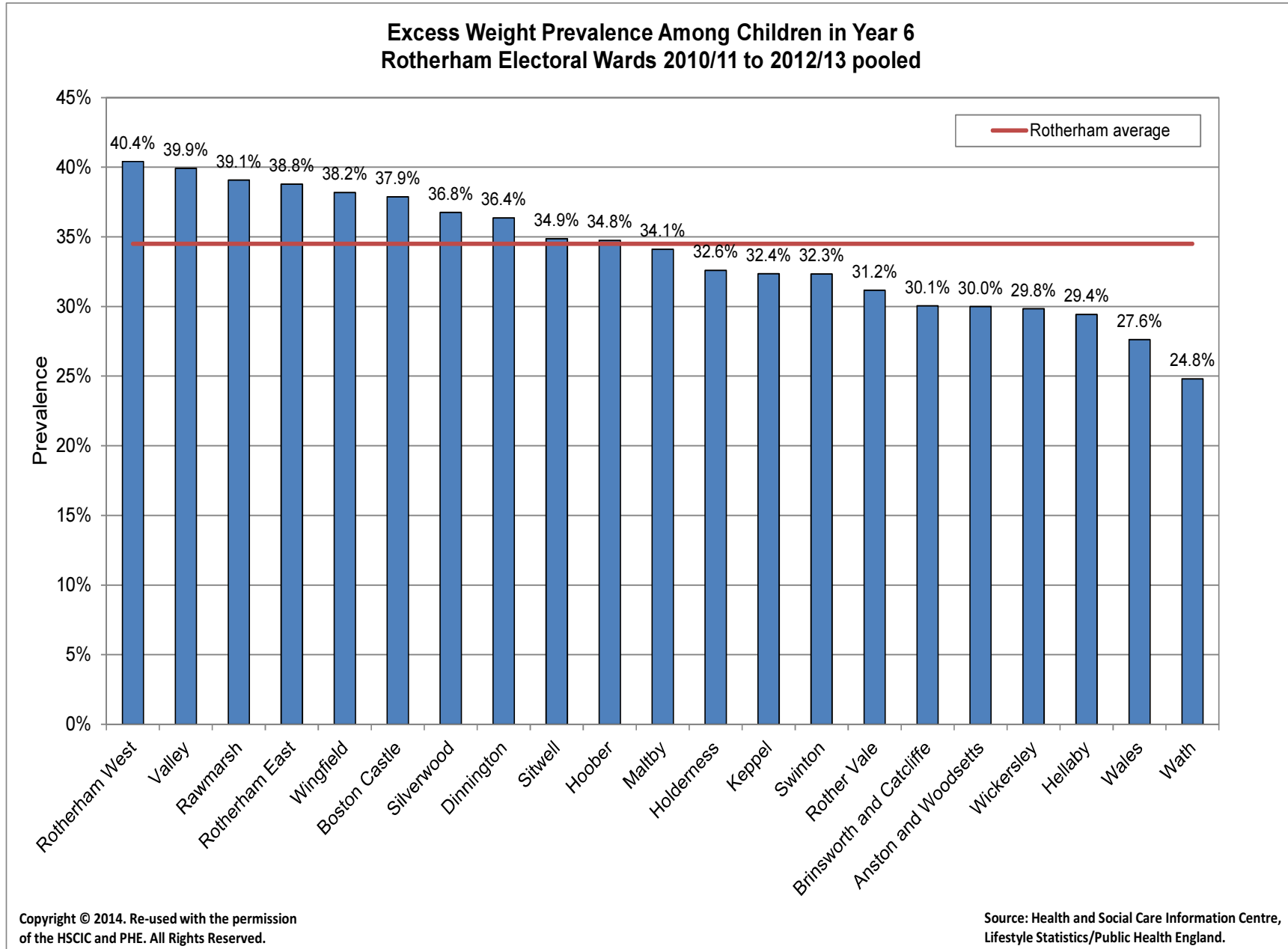
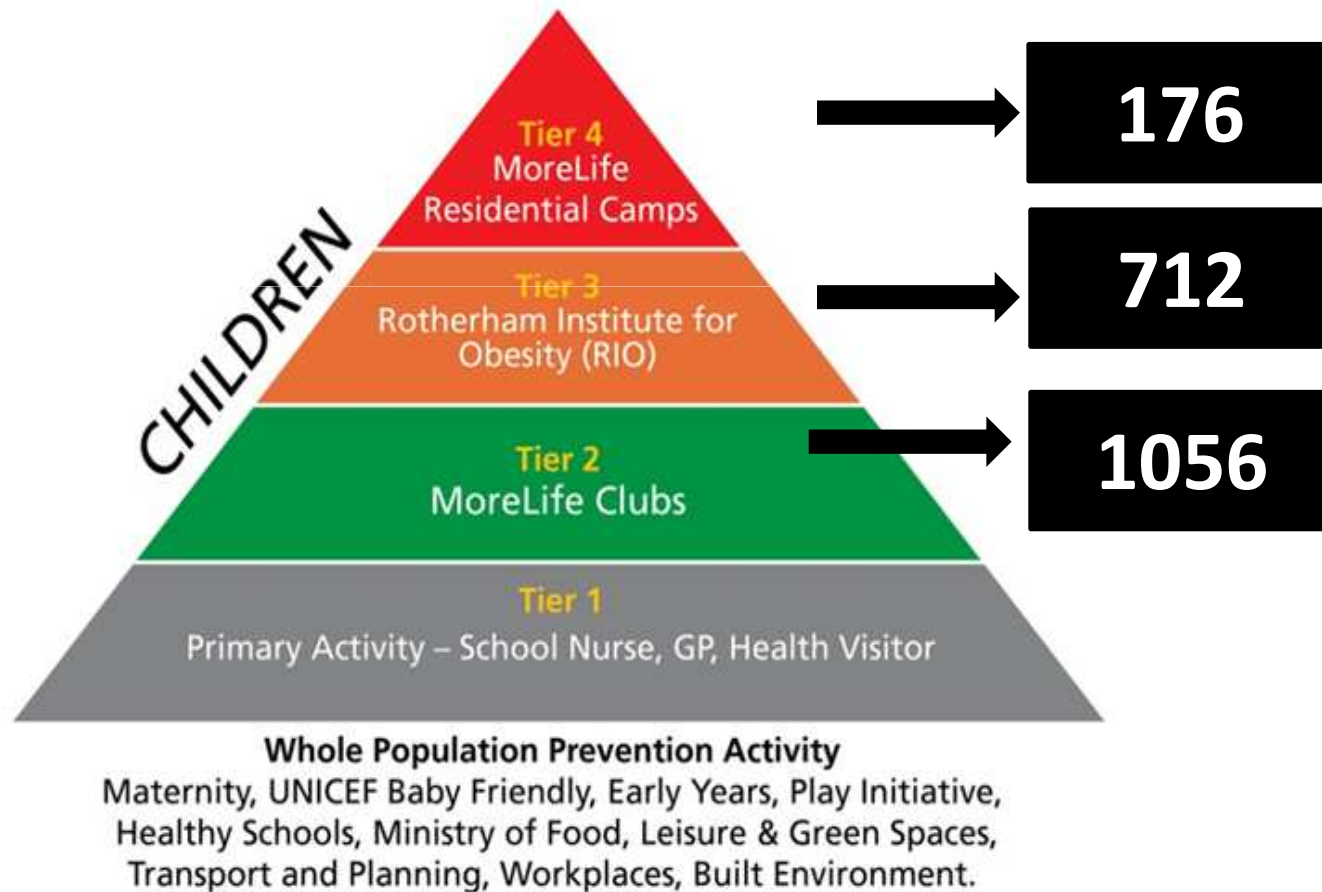


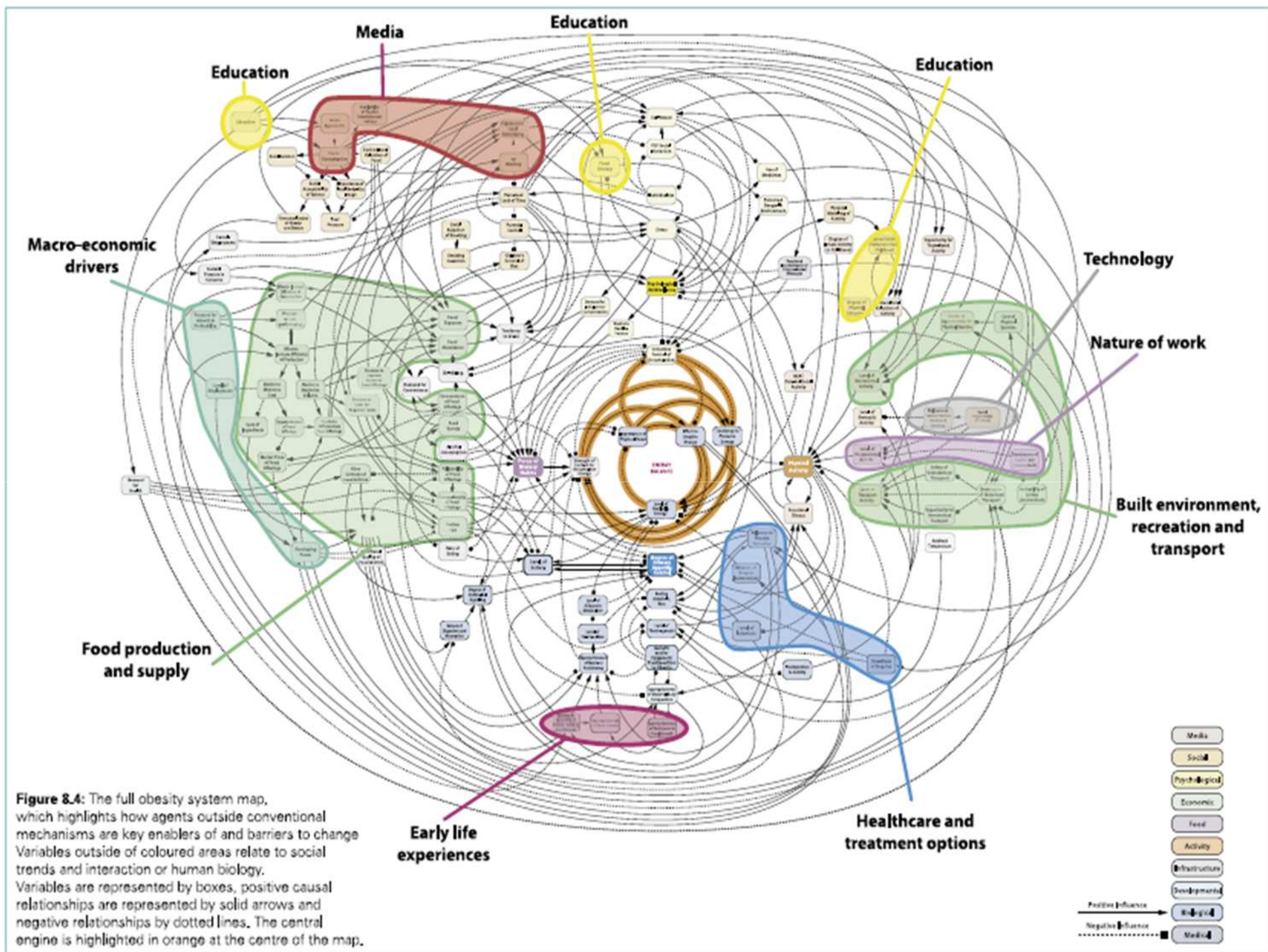
Chart 6 - Year 6



# Rotherham Healthy Weight Framework







# Thank you for listening

## Any questions?