

Missing from; Home, Care and School

Rebecca Wall – Head of Safeguarding, Quality & Learning

Dean Fenton – Head of Service, Access to Education

What guides our response to Missing

For children missing from Care and Home: Statutory guidance on Children who go missing from home or care (Jan 2014) is issued under Section 7 of the Local Authority Social Services Act 1970. This complimented by:

- Working Together to Safeguard Children and related statutory guidance (2018);
- The Missing Children and Adults Strategy (2011);
- Child sexual exploitation; Definition and a guide for practitioners, local leaders and decision makers working to protect children from child sexual exploitation (February 2017)
- The Children Act 1989

For Children Missing from Education:

- Section 436(A) of the Education Act requires that Local Authorities make arrangements to established the identifies of children residing in their area who are not registered as receiving suitable education



What's working well

- A permanent Missing Team is now in place with a dedicated team manager, to support Return Home interviews for Children missing from home and care
- A 'Missing from Home and Care' scorecard is produced and available on a monthly basis to support a more holistic approach and the understanding of patterns and trends. This supports identification of repeat 'missing' episodes and actions to support future reduction
- There are strong internal and external links and partnership working
- New ways of working has become embedded in practitioners' day to day working
- Excellent multi-agency partnership working has resulted in the reduction of the overall number of young people missing from home or care
- Individualised 'Find Me Plans' ensure clarity of roles and responsibilities



What are we worried about?

- In relation to children Missing from Home and Care the largest cohort of missing children at year end of 2018/19 remains our Looked After Children (LAC). They account for just over half of all recorded missing episodes
- The other significant cohort of missing are those not known to services, or known to another local Authority. The Return Home Interview is key in understanding and signposting this cohort in an effort to reduce future missing episodes
- There has been a seasonal increase in the number of missing episodes currently and this has impacted on return home interviews
- For Children Missing from Education (CME) there was an increase in Q4 (171 children) from Q3 (143 children) of missing children, the majority of which have been known to have previous missing episodes. This is largely due to families being transient and returning to Rotherham intermittently, rather than concerns relating to vulnerability and/or safeguarding issues



What are we worried about?

- A total of 39.2% of newly identified CME episodes are children from the Central area of Rotherham, which again correlates to the highly transient nature of families and the travelling to and from the country of origin to the UK
- Although parents of Children Missing from Education do not have to report ethnicity as a mandatory declaration, 44% of parents classified their ethnicity as Roma and a further 33% were unclassified
- There is a significant financial impact on both Schools and the Local Authority due to the additional resource required to support CME

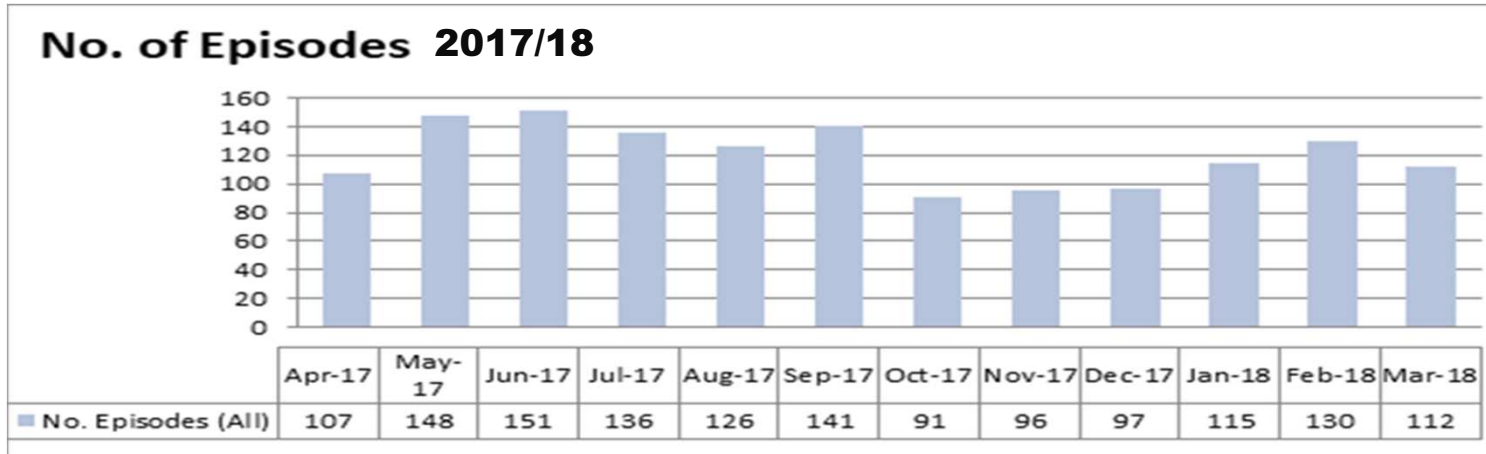


What are we going to do about it?

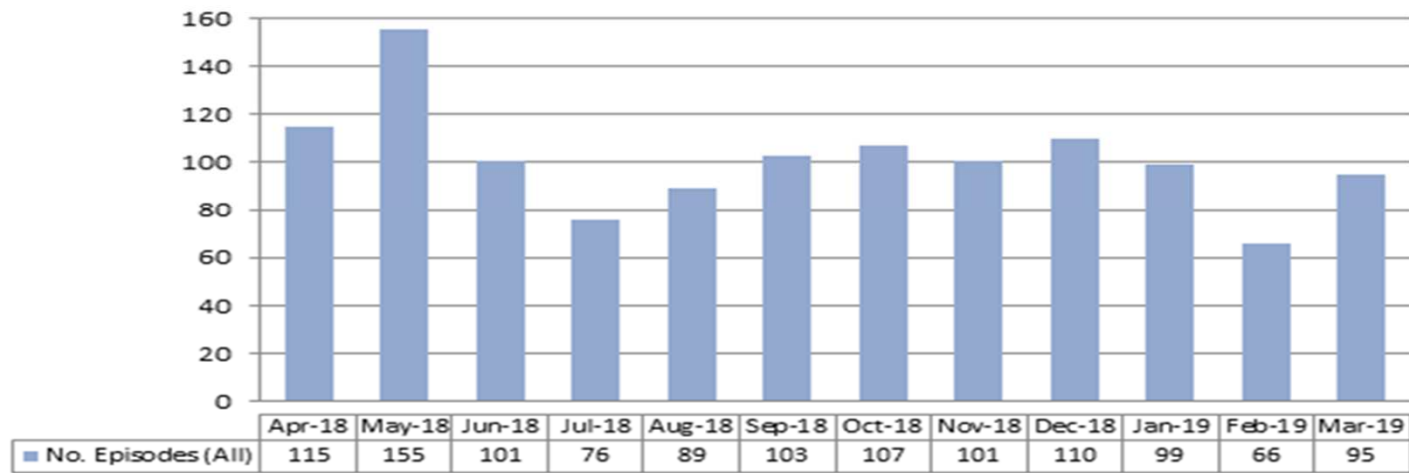
- The Inclusion Scorecard is under development and the Missing Scorecard is under review to support tracking all the strands of missing. Future developments will help to triangulate and cross reference exclusions, children at risk of Child Sexual Exploitation or Child Criminal Exploitation
- Strengthened partnership working with the Police with a planned joint review of Children Missing from home and care, which will maximise responses to missing episodes and a focus on preventative action via a shared 'Find Me Plan'
- South Yorkshire Police are to lead a review of the Regional Missing Protocol which will support the Local Authority to ensure a consistency of responses for young people within the South Yorkshire region
- For CME a supplementary form has been included on the on-line application for a school place for completion by parents regarding ethnicity



Number of Missing Episodes from Home of Care

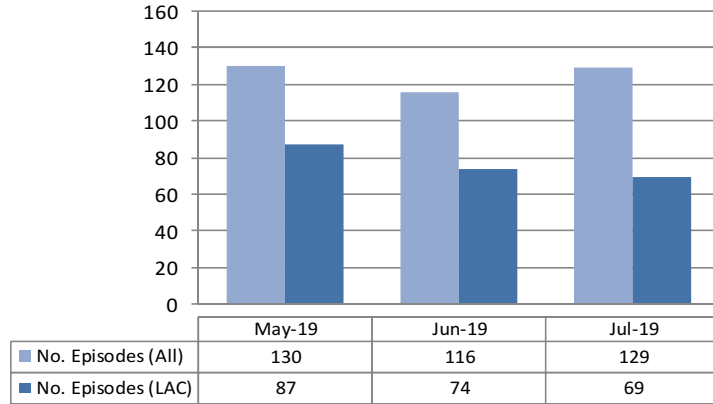


No. of Episodes 2018/19



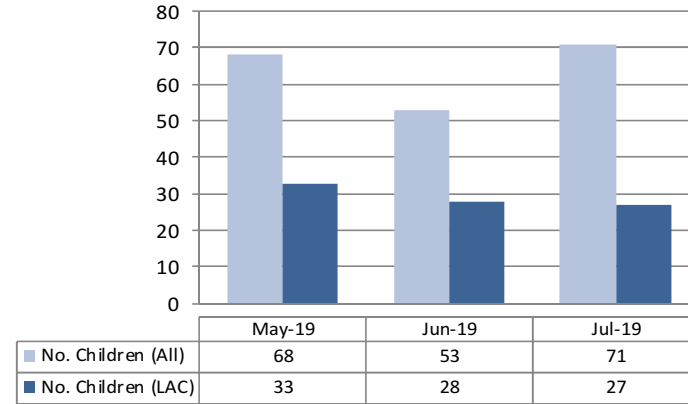
Missing Trends

No. of Episodes

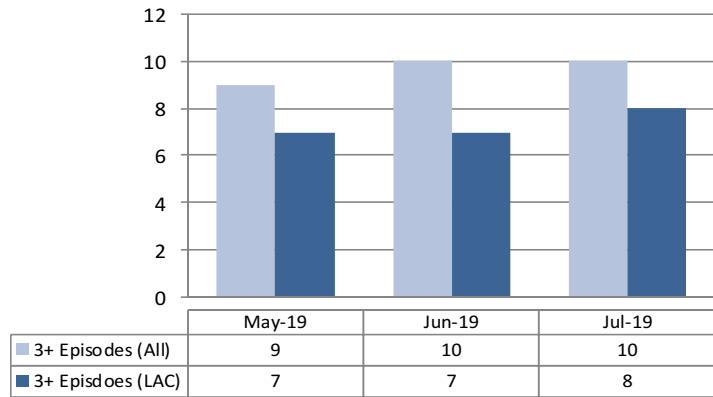


Reporting Month: July 2019

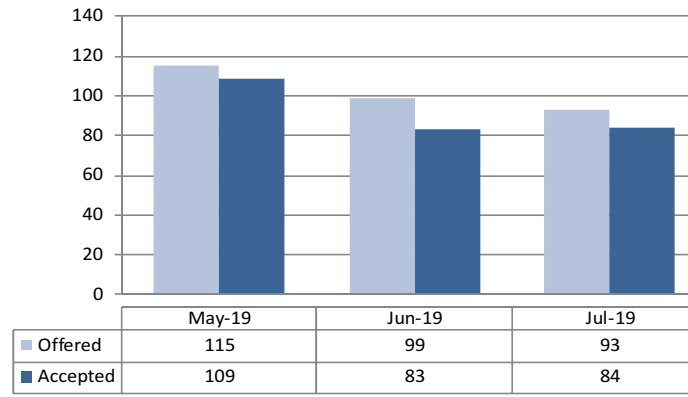
No. of Children



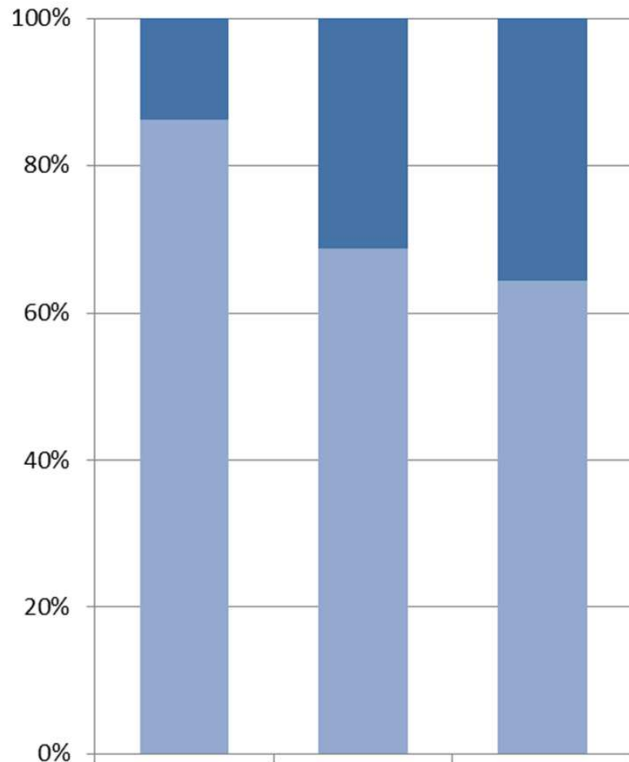
No. Children with 3+ Episodes in Period



Return Home Interviews



RHI Complete within 3 Working Days



	May-19	Jun-19	Jul-19
RHI Not Completed in Time	15	26	30
RHI Completed in Time	94	57	54

% by Case status

