

Emerging Town Centre Wide Public Realm Palette

FORGE ISLAND DEVELOPMENT

Emerging proposals show a contemporary, industrial palette, creating a distinctive character for this destination. This includes a modern grey blend of paving with corten steel accents. The large scale spaces and aspirations for Forge Island provide opportunity for ambitious design statements.

FORGE ISLAND CANALSIDE

The proposed palette aims to compliment the Forge Island Development. It includes silver grey resin bound gravel and warm/rusty toned porphyry cobbles. Timber, corten steel and dark grey steel is used for features and furniture.

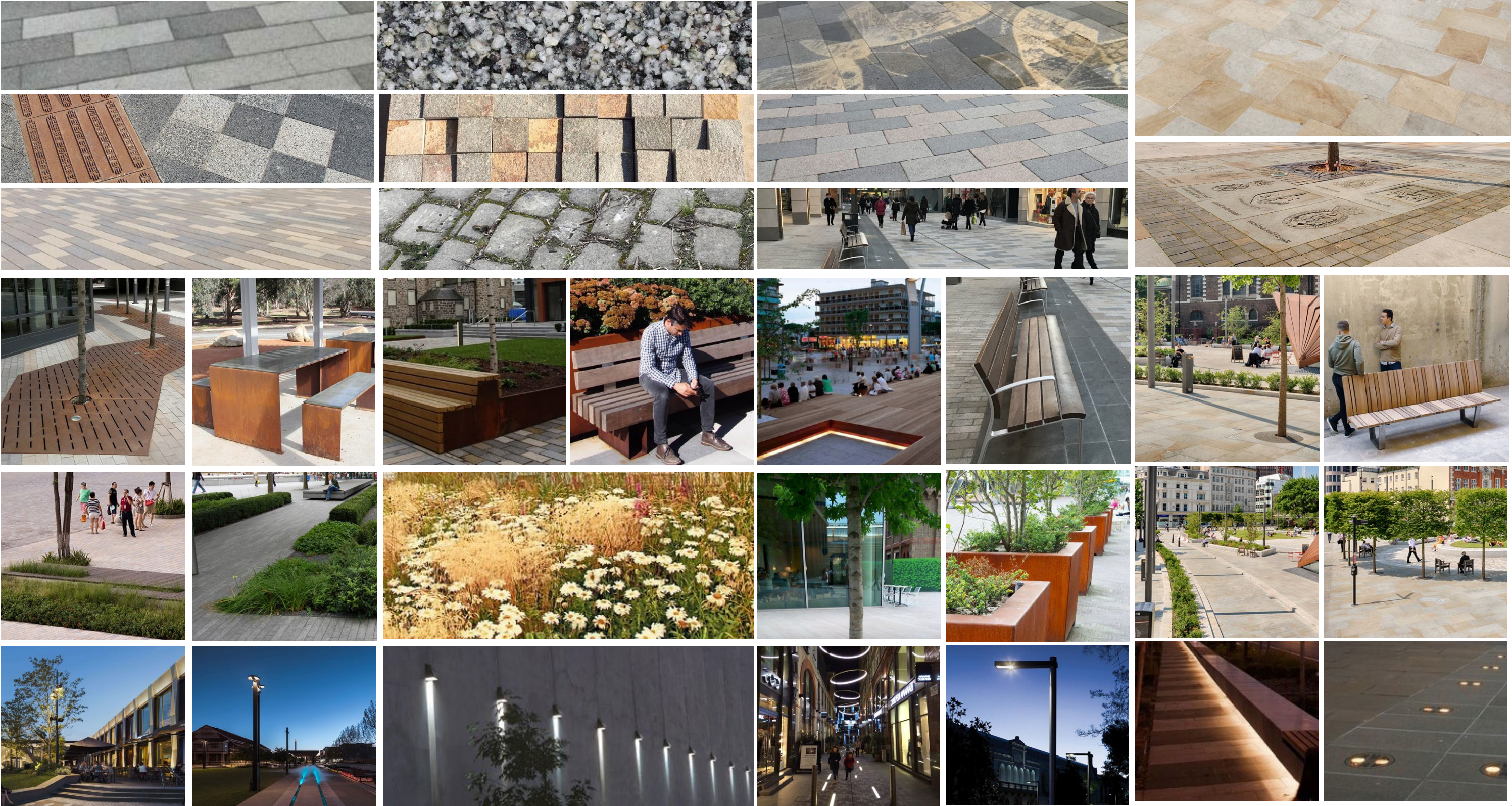
RETAIL & MOVEMENT STREETS

There is a clear need to simplify, reduce clutter and unify the core streets in Rotherham. Themes can be drawn from Forge Island and the palette must be able to react to a wide variety of locations. Proposals include a new Rotherham blend of pavers (greys and warm tones) and the occasional use of Scoutmoor sandstone creating a unified 'carpet' in the town centre core. Timber, colour accents and dark grey steel is used for furniture and features.

MINSTER QUARTER

Future schemes that relate to the setting of All Saints should follow the lead of previous schemes. This includes sandstone setts/slabs and consideration of bespoke details. Furniture and features can vary from the wider town centre to emphasise this distinctive quarter.

HARD MATERIAL
FURNITURE
PLANTING
LIGHTING



Public Realm Layers

The proposed design considers three layers to the public realm. Paving should be robust, simple and contemporary. This will be overlaid by furniture, trees and planting that avoids clutter and allows flexibility of use of the streets. Within this permanent environment there is huge opportunity to enliven the public realm through pop up and temporary interventions.

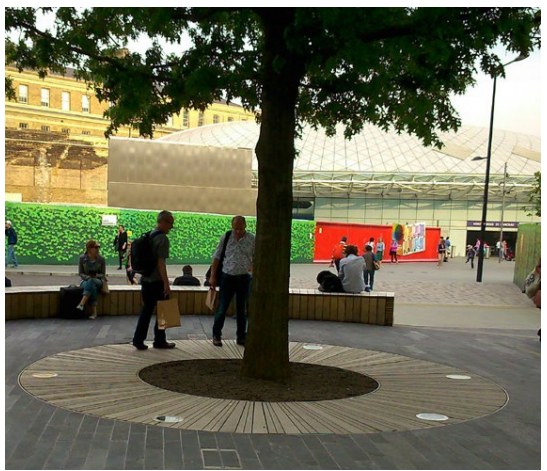
POP-UP ELEMENTS

TEMPORARY

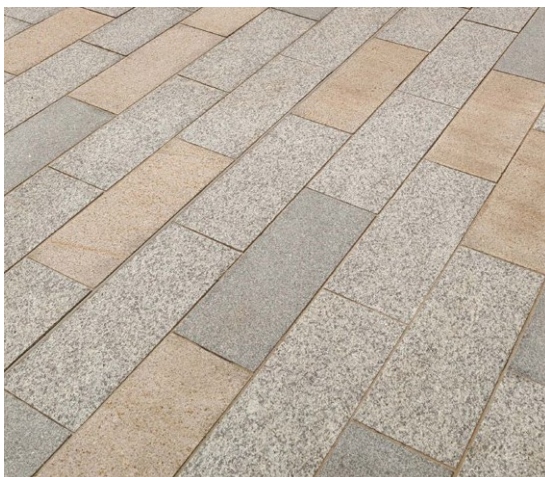


FURNITURE, TREES & PLANTING

PERMANENT

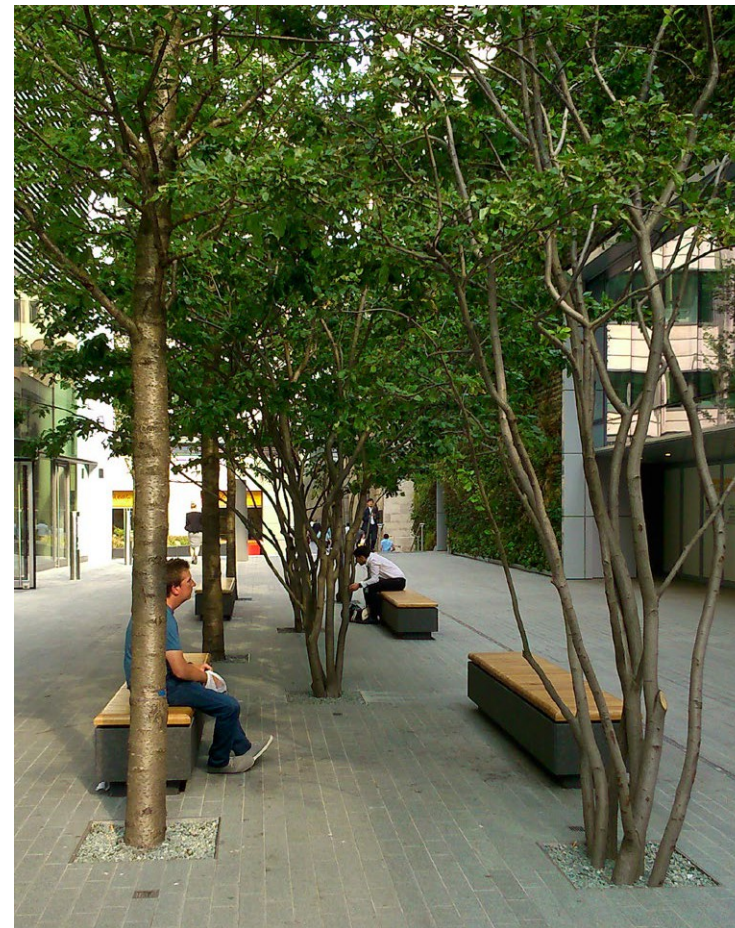


PAVING



Retail & Movement Streets Inspiration

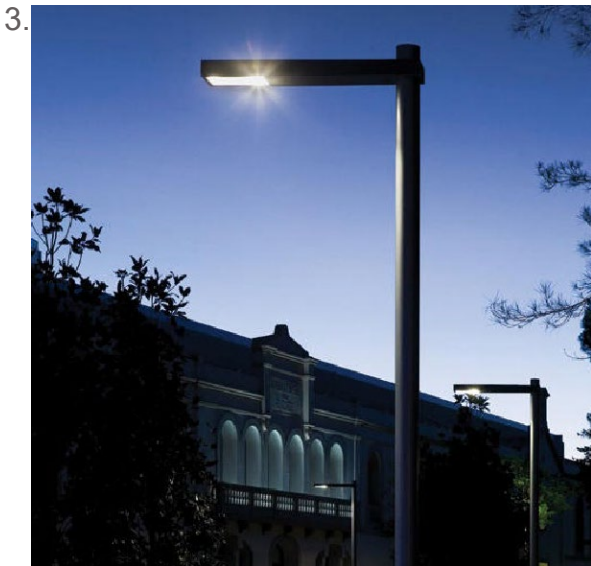
Retail and movement streets can offer an improved visitor experience for Rotherham Town Centre. Inspiration is taken from many places that have achieved a simple contemporary, clutter free environment that creates a stage for activity and increases footfall.



Retail & Movement Streets Palette

Through this process a palette has been developed for Rotherham’s ‘Retail & Movement Streets’. Potential products are provided to set a benchmark and are to be confirmed/agreed. Sample panels for paving will be provided to agree exact blends/colours.

1/2.



1. Option 1 - Granite paving setts in various size units and a blend of colours that brings together the grey palette on Forge Island and the buff palette around the Minster. The blend and colour mix varies to help delineate space and highlight activity areas/seating areas.
2. Option 2 - Concrete paving blocks in various size units and a blend of colours that brings together the grey palette on Forge Island and the buff palette around the Minster. The blend and colour mix varies to help delineate space and highlight activity areas/seating areas.
3. Simple elegant style of street light column and fixture in grey finish.
4. In ground LED feature light.
5. Simple, elegant style of litter bin in grey finish.
6. Simple, elegant style of cycle stand in grey finish.
7. Bespoke perch feature for leaning against or use as table for food/coffee/laptop. Option to incorporate wifi or phone charger points.
8. Simple elegant style of bollard in grey finish. Options to include drop bollards as required.
9. Timber seating in various sizes/layouts and a mix of backless and with backs. Legs to be in grey finish.
10. Bespoke timber tree island incorporating informal seating.
11. Moveable planters in various sizes/colours.
12. Catenary lighting.

5.



6.



7.



8.



9.



10.



11.

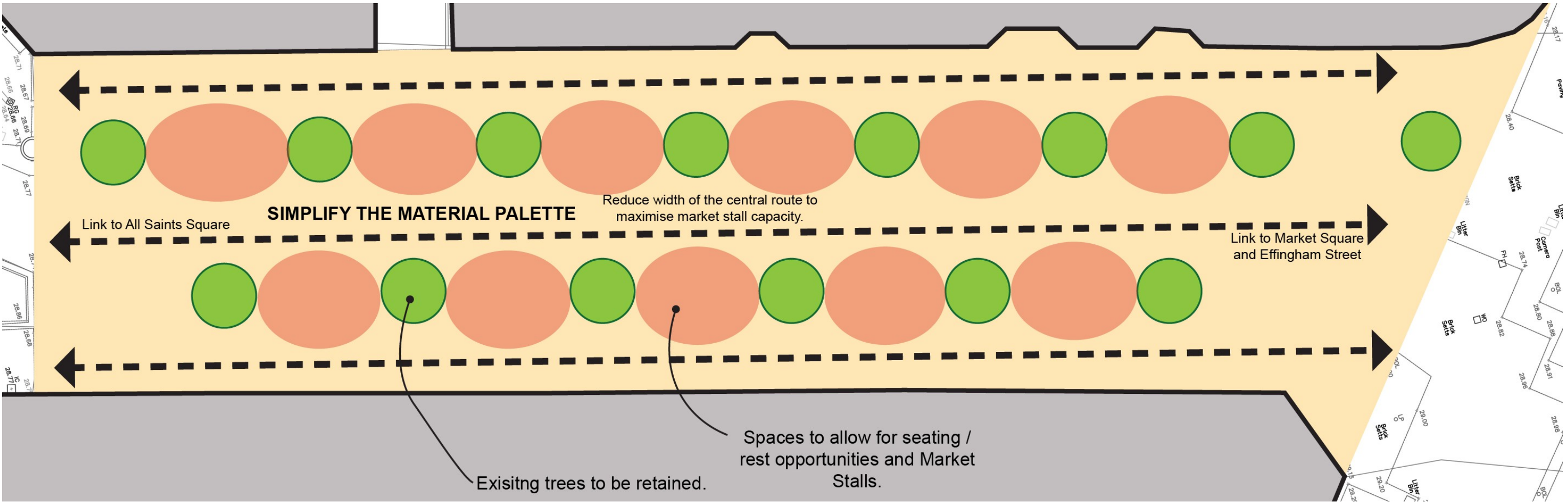


12.



Analysis - 1. Effingham Street

Effingham Street is a major pedestrian and retail street that joins Market Square and All Saints Square. The design should improve the infrastructure and visitor experience for the bustling market that stretches along the street. At either end of the street there is opportunity to create gathering areas.



Positive Features to Enhance



Pedestrianised street.

Thriving market use.

Existing mature street trees.

Observations to address

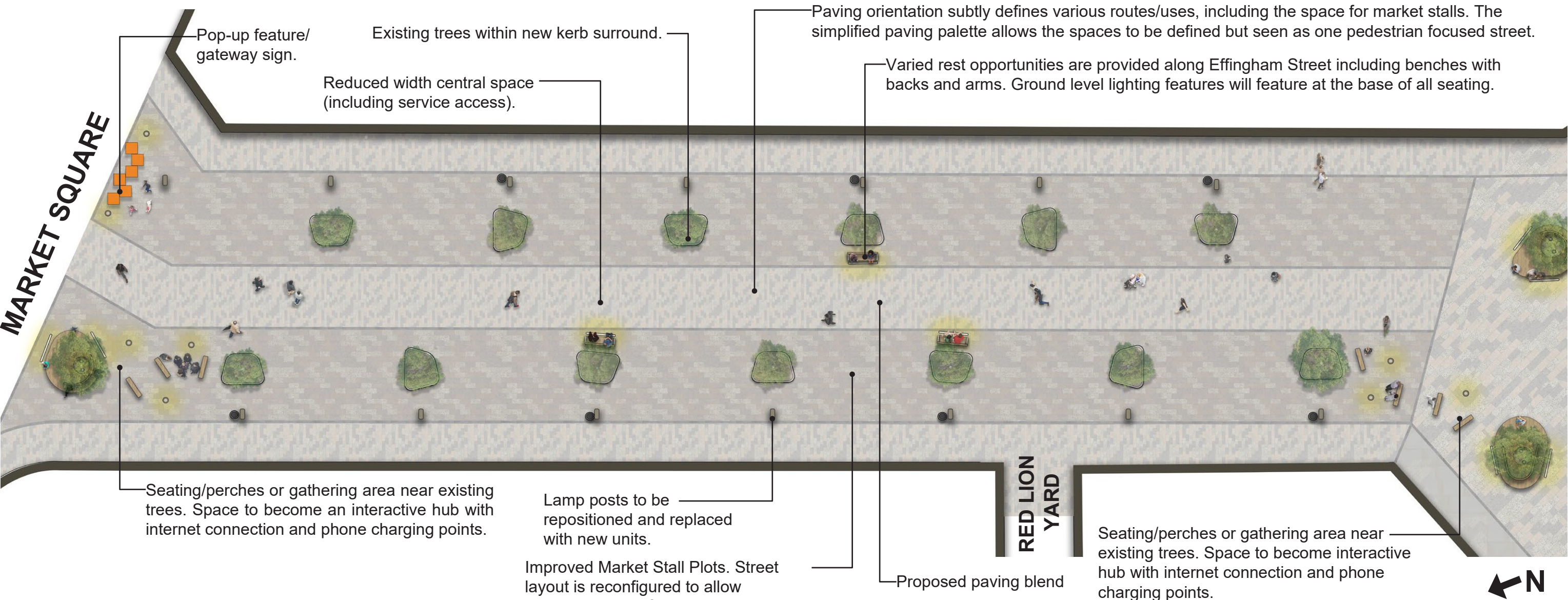


Over complicated material palette.

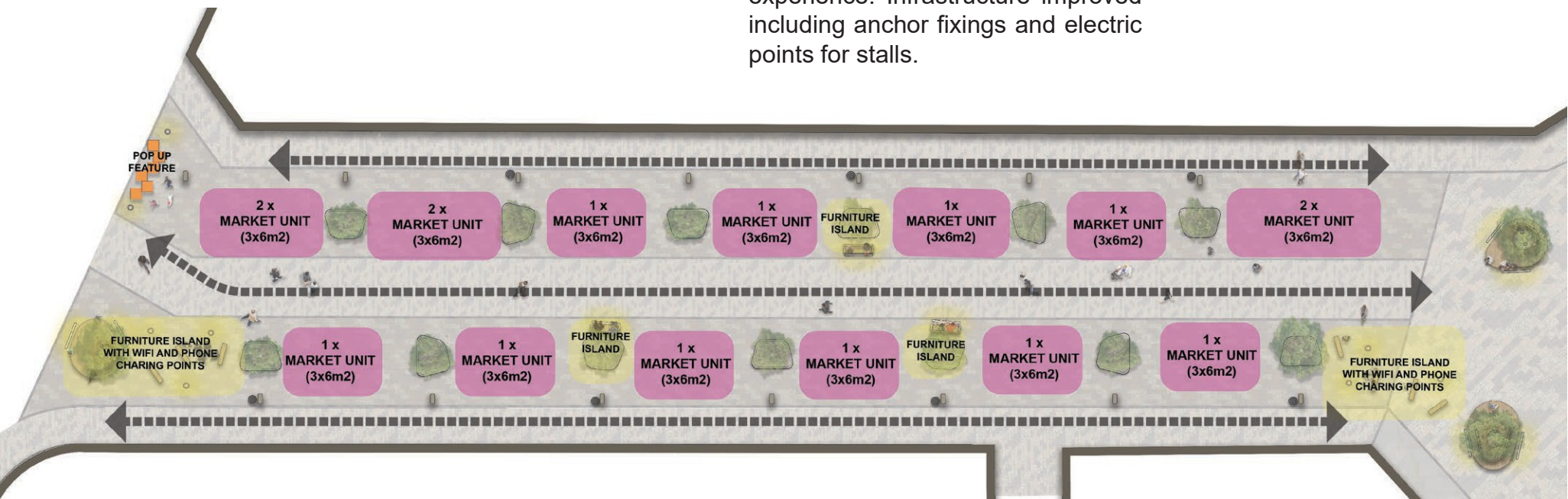
The current street layout constrains the markets use and the quality of market stall infrastructure/branding could be improved.

Maximise opportunities to enjoy the Minster setting.

1.Effingham Street Concept Design - NTS



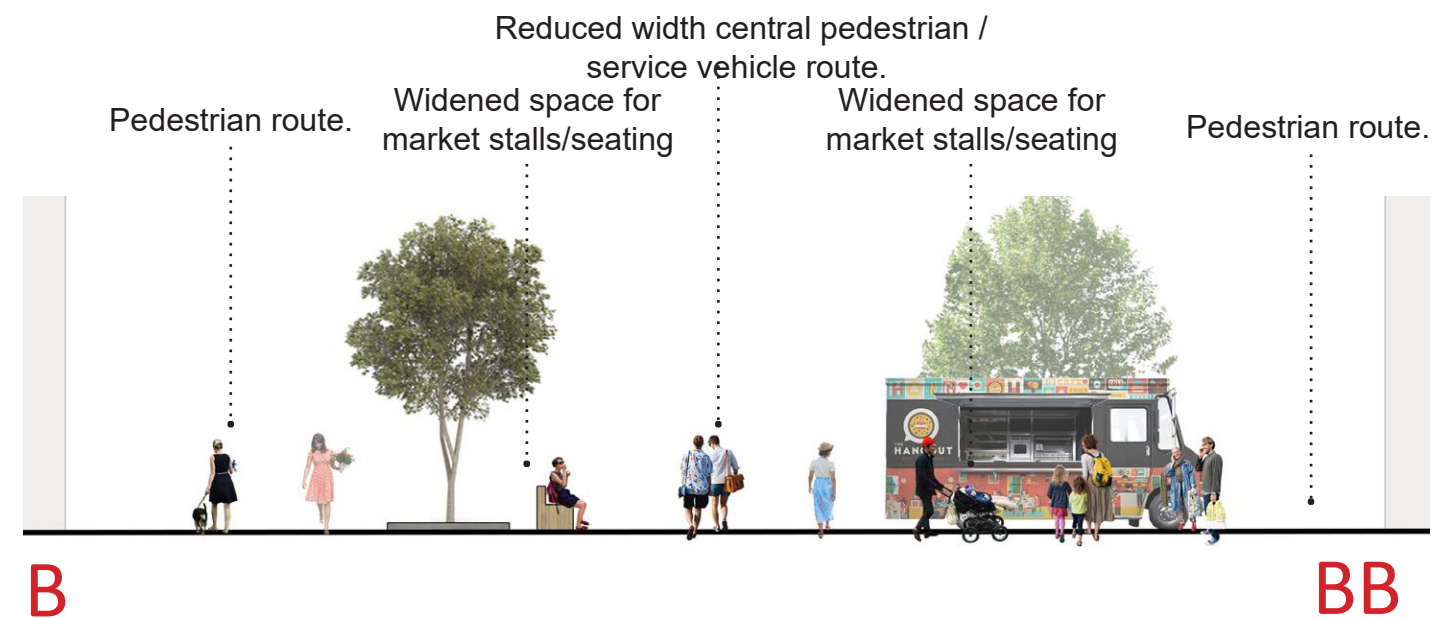
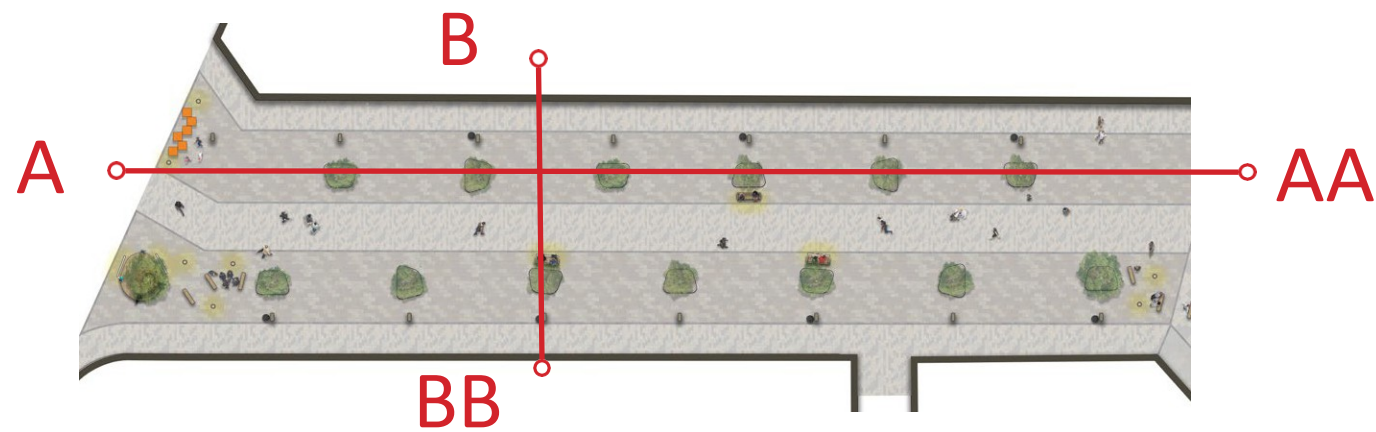
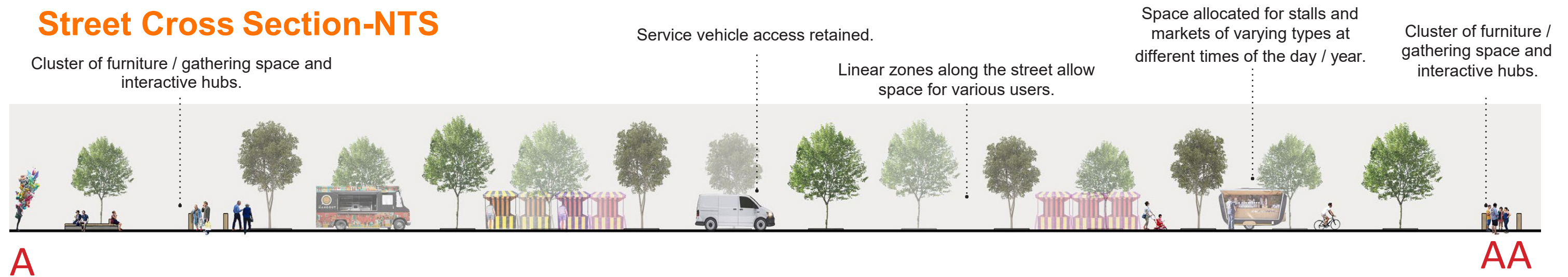
MOVEMENT AND SPATIAL ORGANISATION



“The design aims to improve the infrastructure and visitor experience for the bustling market that stretches along the street. At either end of the street there is opportunity to create gathering areas”.

1. Effingham Street Concept Design

Street Cross Section-NTS



Precedent Images



1. Effingham Street Concept Design

VISUALISATION

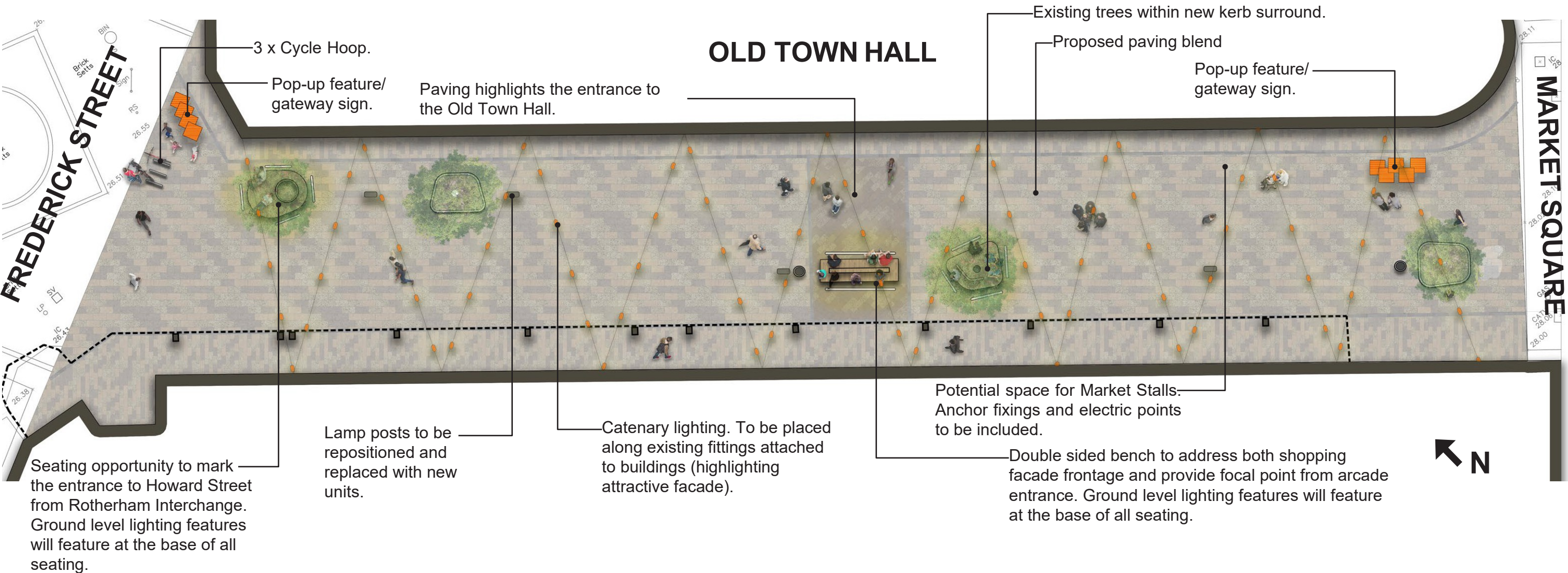
Before



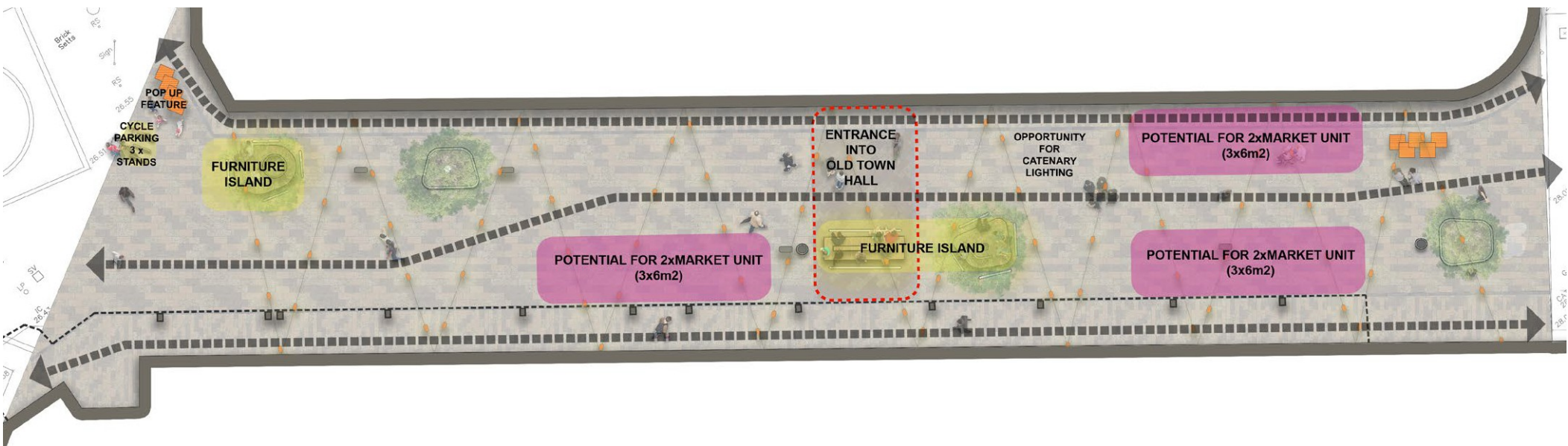
After



2. Howard Street Concept Design - NTS



MOVEMENT AND SPATIAL ORGANISATION

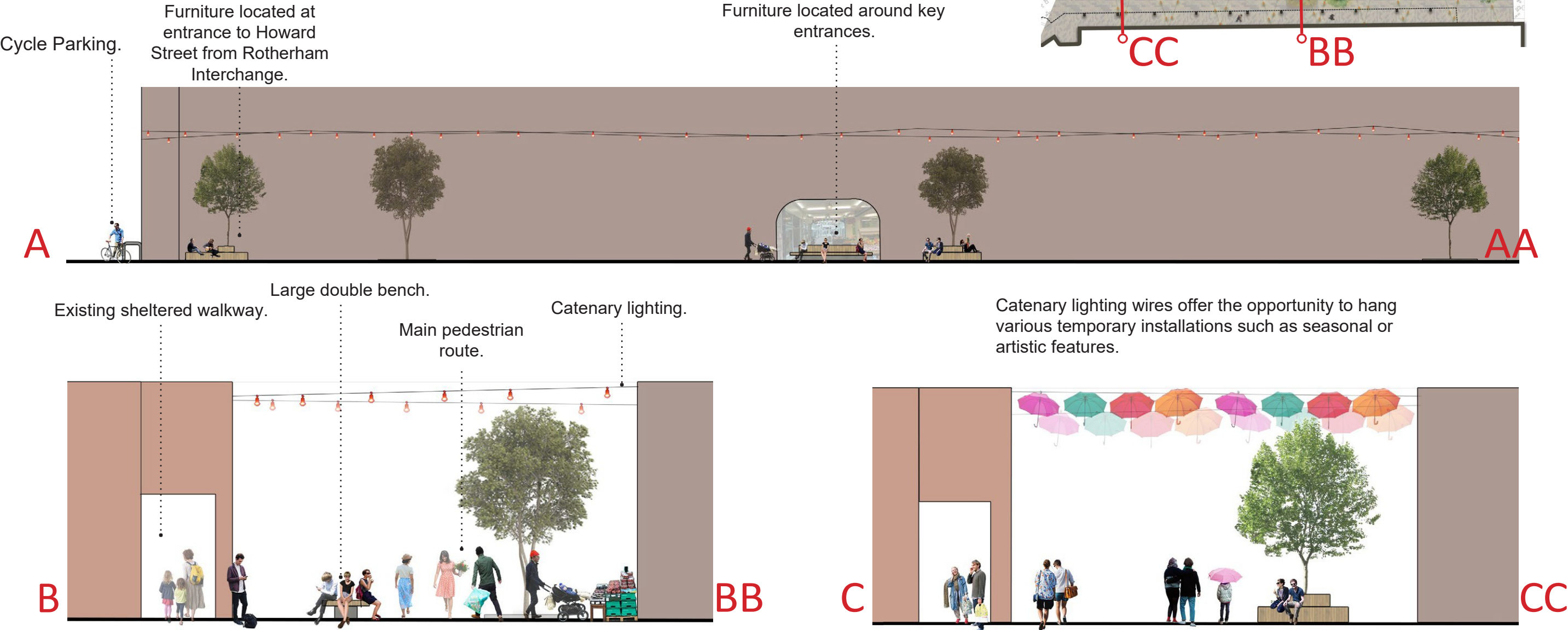


“The design aims to reduce clutter, highlight the Old Town Hall and improve its ability to accommodate market stalls”.

2. Howard Street Concept Design

Street Cross Section-NTS

Street Cross Section - refer to next page



Precedent Images



2. Howard Street Concept Design

VISUALISATION

Please note that a layer of pop up and temporary features are shown for illustration purposes only within the proposed permanent public realm.

Before



After

