

Improving Places Select Commission

Housing Strategy 2022-25 Progress Report Jul - Dec 2022 (Q2/Q3)

James Clark

Assistance Director of Housing

Housing Strategy Progress

- Key priorities
- The Rotherham Picture
- Progress
- Next 6 months



Housing Strategy Priorities

High quality new homes

Affordable homes to meet local need

Investment in existing homes

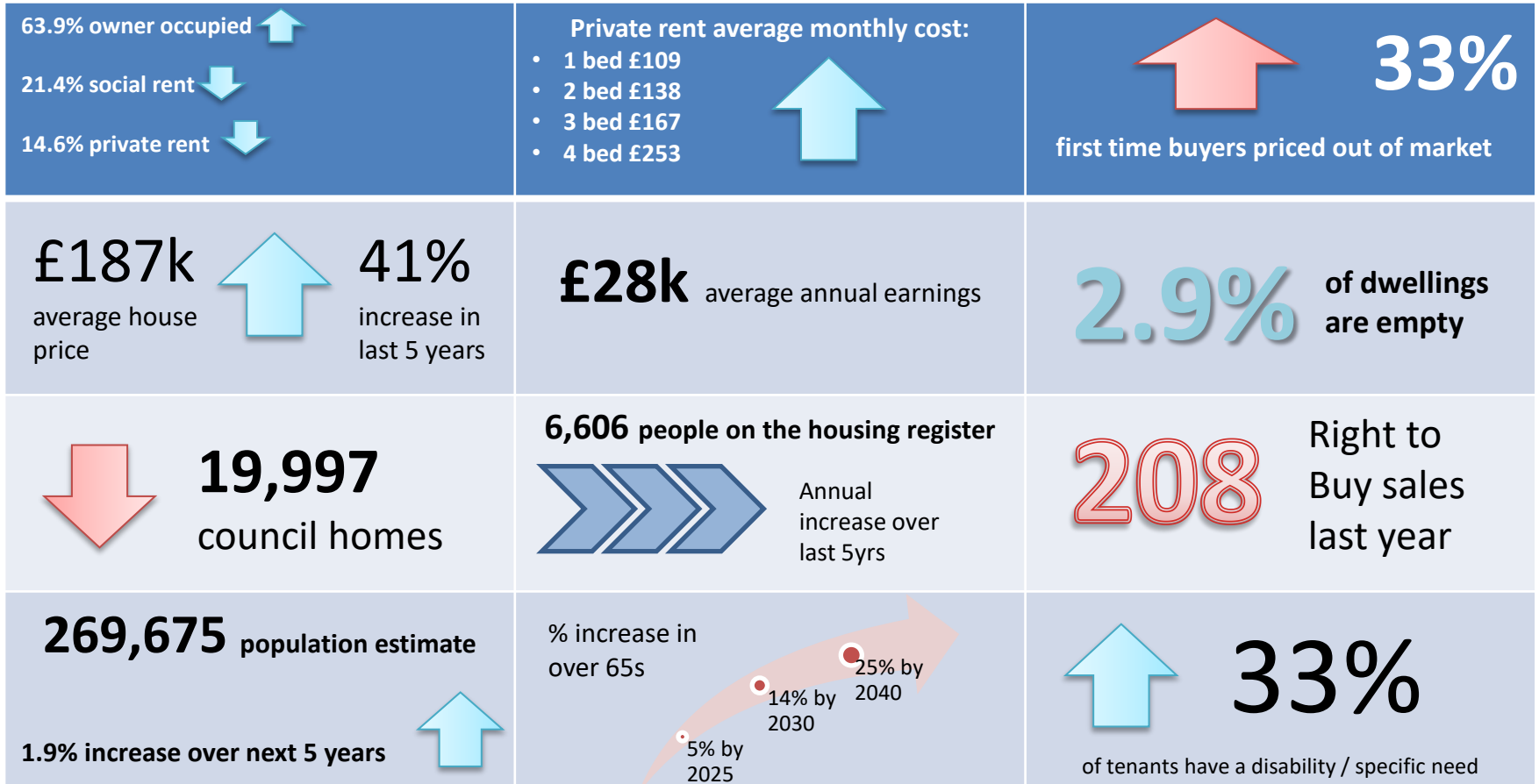
Bringing empty homes back into use

Supporting people to live independently

Strengthening communities



The Rotherham picture



High quality new homes



- 147 new homes delivered:
- 89 council delivery
- 58 via local housing providers

Affordable homes to meet local need

- 67 new council rented homes
- Great Places at Rawmarsh
- Continuing to promote shared ownership to assist first time buyers and people down sizing
- Build and acquisition for Shared Ownership
- SME Homebuilder Initiative launched



ROTHERHAM SMALL SITE HOMEBUILDER INITIATIVE



Information sessions - register via our website

Swinton Library, Tuesday 7 March, 12.30pm to 5.00pm

Maltby Library, Tuesday 14 March, 9.30am to 2.00pm

Rotherham Town Hall, Tuesday 21 March, 4.00pm to 7.00pm



Ideal for
SMEs

www.rotherham.gov.uk/housing

Investment in existing homes



- Investment continues
- 99.98% gas compliance
- Decency 99.99%
- Customer satisfaction 94%
- SHDF
- EPC rating C

Bringing empty homes back into use



- Empty Homes Officer
- Increased enquiries
- Homes brought back into use
- Case studies



Supporting people to live independently

- 678 homes let
- New bungalows and aged persons apartments
- Launched Adult Care Market Position Statement
- Assisted over 3,500 households with adaptations
- Tenancy health checks on track



Strengthening communities

- Tenant and resident support increased
 - Training
 - employment support
 - Energy crisis support
- TPAS exemplar status
- Social Value



Challenges

- Housing Market / Economic
- Cost of living crisis
- Increased demand for support and services
- Regulation and compliance
- Focus on damp and mould
- Ageing stock / stock efficiency
- Staff / skills
- Supply / construction costs



Next 6 months

- Town Centre complete
- Final phase of Chesterhill / Whinney Hill
- Homes England / SYMCA
- Social Housing White Paper
- Homelessness focus
- Developer engagement
- Zero-carbon prototype project
- Continued tenant and resident support

