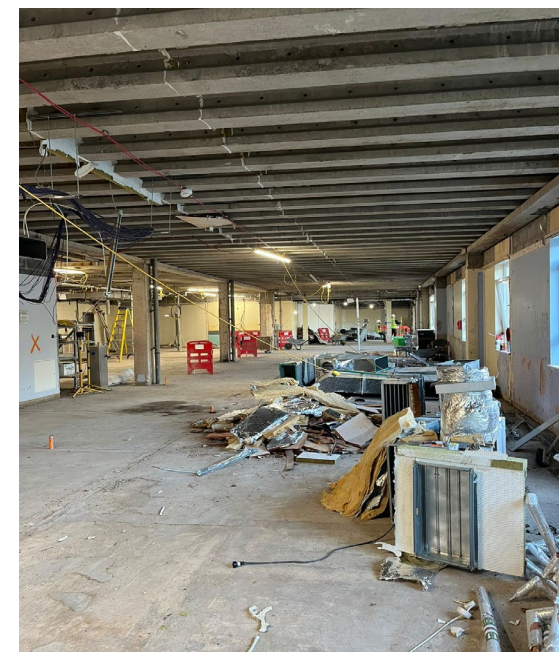


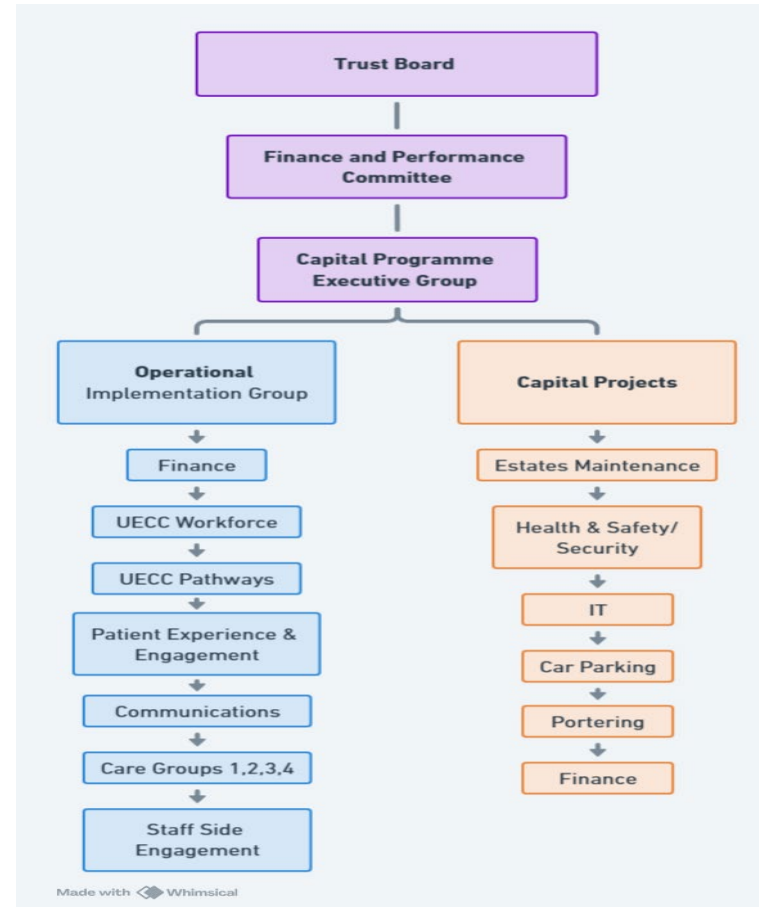
The Rotherham Foundation Trust Urgent and Emergency Care Capital scheme update

UECC Capital programme

- NHS England bid confirmed – December 2024
- £7 million - National Additional Capacity Targeted Investment Fund (ACTIF)
- Increase Urgent and Emergency Care Capacity and Same Day Emergency Care capacity (SDEC) and associated benefits to patient flow.
- Support urgent care demand and improve timely access to urgent care services and improve outcomes for patients.
- Numerous services will benefit from the scheme which includes pre-op assessment, sexual health and fracture clinic.
- Work streams to work through workforce model and clinical model
- Public engagement event on 26th March 2025
- Planned opening June 2025 for the SDEC and UECC expansion



UECC Capital programme- Governance



SDEC floor plans

