

Kinship Local Offer: Improving Lives Select Commission June 2026

**Chris MacDonald,
Head of Safeguarding, CYPS**

Kinship Local Offer

DfE definition of kinship care:

‘any situation in which a child is being raised in the care of a friend or family member who is not their parent. The arrangement may be temporary or longer term’.

DfE Oct 2024 ‘Kinship Care: Statutory Guidance’ requires that we:

- Nominate senior officer as lead for kinship.
- Publish and regularly review our Kinship Local Offer.
- Offer family group decision making to all families before care proceedings.
- Virtual School to nominate officer for educational outcomes for children in kinship care arrangements.

Kinship Local Offer

Children's Wellbeing and Schools Act 2026 makes publishing Kinship Local Offer a legal requirement.

RMBC's Kinship Local Offer scrutinised at ILSC June 2025 and approved by Cabinet July 2025.

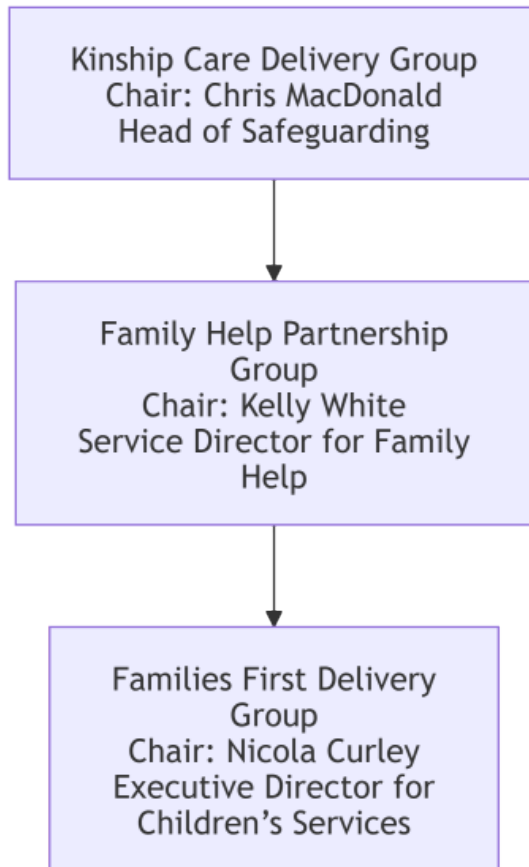
ILSC overseeing progress 12 months on.

Kinship Local Offer

The Kinship Local Offer is expected to include:

- Support groups and training.
- Financial support.
- Help to stay in work.
- Accommodation.
- Education.
- Supporting family time.
- Family group decision making.
- Legal support.
- Therapeutic support.

Kinship Care Delivery Group



- To coordinate activity to support kinship carers between services within the Council and between partner agencies.
- To ensure compliance with relevant legislation and statutory guidance, including the requirement to publish and maintain a Kinship Local Offer with multi-agency input.
- To promote the well-being and stability of children in kinship care arrangements, closing the gap on educational attainment, health outcomes or any other areas of adversity or disadvantage.
- To establish pathways to access resources, training, and support for kinship carers.
- To monitor and evaluate the effectiveness of services which kinship carers use and make recommendations for improvement.

Kinship Care Delivery Group

Chair:

Kinship Lead

Education:
Virtual School
Early Years
SEND
Access to
Education
Education
Safeguarding
Lead

Health:
ICB
Child in Care
Nurse
TRFT

Children's
Social Care:
MASH
Locality
Fostering

Safeguarding
Empower
IROs

Family Help:
Family
Support

Housing:
Housing
Options

Progress

- The Kinship Local Offer was promoted to the public and professionals in a variety of settings and forums.
- Kinship Navigators placed within our MASH have been able to be a single point of contact for all kinship carers.
- Our Empower service has two 1FTE posts equivalent for kinship families and has been able to provide wraparound support to kinship families in crisis.
- The kinship support groups have been maintained with a number of guests who routinely attend to share what their services offer, and to co-develop kinship pathways.
- A five week rolling introductory course covering trauma, safety and attachment is run through our Empower service for kinship carers.
- A single form of assessment and support plan introduced.
- Kinship children were included in eligibility criteria for Healthy Holidays scheme.
- Focus on kinship children in the 0-5 SEND Pathway multi-agency meeting.

Next 12 months

- Check-ins: Kinship Navigators will operate a model of annual check-ins with all kinship carers, including those who have not approached us for support, to minimise barriers to seeking help.
- Training: To build on sessions on the Kinship Local Offer, a programme of training across Family Help and Children's Social Care will seek to grow kinship literacy in the workforce.
- Support groups: To expand the support group offer based on work with kinship carers to establish what would help most.
- Parenting support: To develop a parenting programme specifically for kinship carers to complement the five week introductory course.
- Educational outcomes: A multi-agency audit of fixed term exclusions for kinship children is planned for Autumn Term, in order to identify any opportunities for earlier identification and intervention.

Thank you

Chris MacDonald
Head of Safeguarding & Kinship Lead